

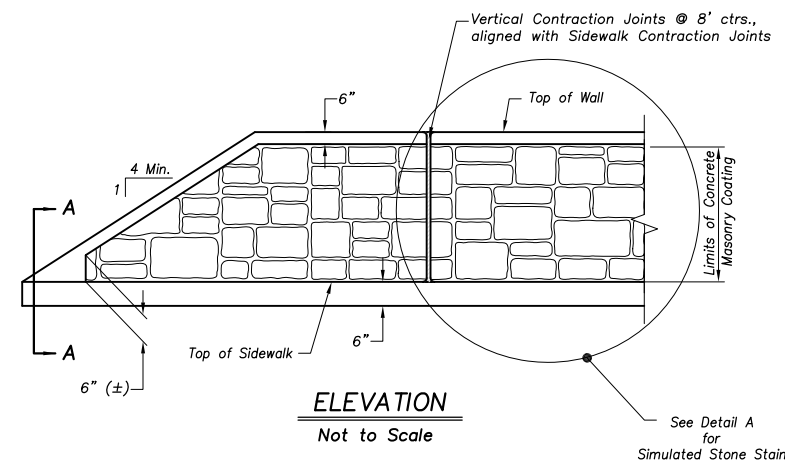
INTEGRAL SIDEWALK AND RETAINING WALL WITH UNDERDRAIN
Not to Scale

Integral Sidewalk and Retaining Wall Notes:

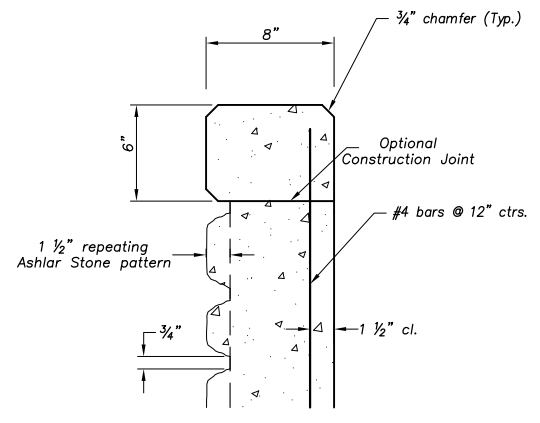
- General:
- Overland Park Municipal Code (OPMC) and Overland Park Design and Construction Standards Manual (OPDCSM) are incorporated, except as otherwise noted.
 - Rock backfill and topsoil placement shall be considered subsidiary to integral sidewalk and retaining wall construction.
 - Do not scale these drawings for dimensions or clearances. Any questions regarding dimensions shall be brought to the attention of the City Engineer prior to construction.
 - See planview for underdrain or weephole locations.
- Concrete:
- Concrete used in this work shall be KCMMB4K, as approved by the Kansas City Metropolitan Materials Board, and shall meet the requirements of the OPMC.
 - All exposed wall faces shall be hand finished with an approved grout while the wall is green. Form marks shall be removed prior to finishing wall.
 - All form ties shall be recessed type.
- Joints:
- Type A joint spacing shall be 8'.
 - Where walk abuts junction of existing walk, concrete curbs, driveways, and similar structures, and 100' centers maximum.
 - Type B horizontal expansion joints shall have 5/8" smooth dowel assemblies with greased caps @ 12" ctrs. max.
 - Key all construction joints.

- Reinforcing Steel:
- Reinforcing steel shall be new billet, minimum Grade 40 as per ASTM A615, and shall be bent cold.
 - All dimensions relative to reinforcing steel are to centerline of bars. 2" clearance shall be provided throughout unless noted otherwise. Tolerance of +/- 1/8" shall be permitted.
 - All lap splices not shown shall be a minimum of 40 bar diameters in length.
 - All dowels shall be accurately placed and securely tied in place prior to placement of bottom slab concrete. Sticking of dowels into fresh or partially hardened concrete will not be acceptable.
 - All reinforcing steel shall be supported on fabricated steel bar supports @ 3'-0" maximum spacing.
- Underdrain Construction:
- Stop underdrain at ends of sidewalk / retaining wall.
 - Proposed underdrain pipe layout, flowline elevations, inlet connection points, and details shall be approved prior to construction. The Contractor shall submit shop drawings and material tests as required for approval by the City Engineer.
 - All underdrain outlet pipes shall be Type K or E with watertight joints. All outlet pipes shall be tied into the nearest storm sewer inlet as approved.
 - All underdrain pipes, Type H or L, shall be installed at a minimum slope of 1%.
 - All filter fabric used for pipe underdrain construction shall meet the requirements of AASHTO M288 Class 1 or approved equal.

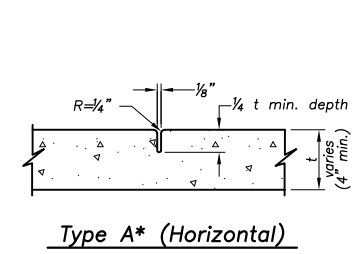
- Materials:
- Form liner pattern shall be Symons Corporation "Southwest Ashlar Stone" or approved equal.
 - Prior to the retaining wall construction, submit to the City Engineer a test panel (8'x6'x8") that exhibits the texture, color and uniformity of finish.
 - Place form liner such that simulated mortar joints are horizontal (level) and vertical (plumb).
 - Penetrating stain shall be Sherwin Williams H&C Shield Plus Ultra Acrylic Concrete Stain or approved equal.
- Federal Standard 595B (* note exception) Limestone Color Shades shall be used as listed below:
- Orange - #30257
 - Dark Gray - #30318
 - Yellow - #33448
 - (* #SW 6151 (Sherwin-Williams "Quiver Tan")
- Application of the "Simulated Stone Masonry Stain" system is designed to duplicate closely the appearance of natural limestone on simulated masonry formed concrete surfaces. The Contractor shall schedule a pre-construction conference with the Architect/Engineer and manufacturer's representative to assure understanding of simulated stone masonry, color application, requirement for construction of test panel and to coordinate the work.
 - The form release agent used on concrete surfaces to be coated, shall be compatible with simulated stone masonry molds and with color stain system to be applied to surface. Consult manufacturer of the color stain system.



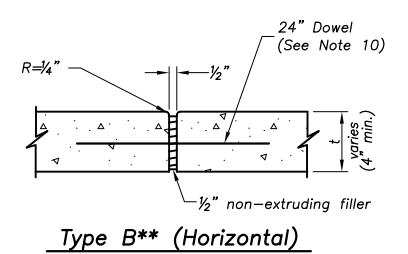
ELEVATION
Not to Scale



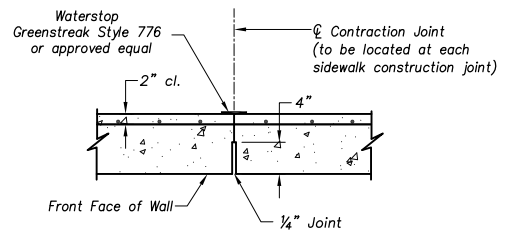
WALL CAP DETAIL
Not to Scale



Type A* (Horizontal)

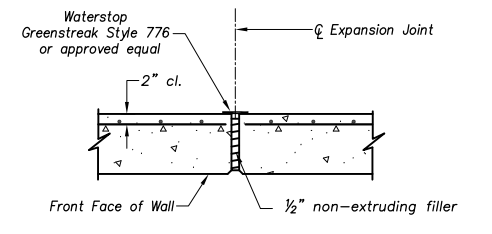


Type B (Horizontal)**



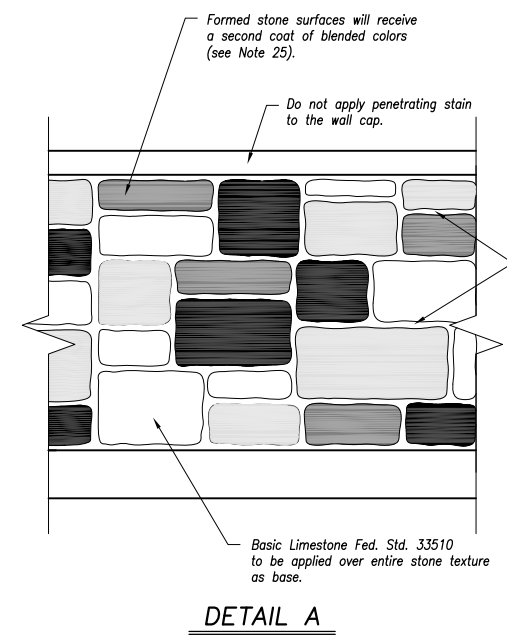
Vertical Contraction Joint Detail

Note: Prefomed Contraction Joints as approved by the City Engineer shall be used

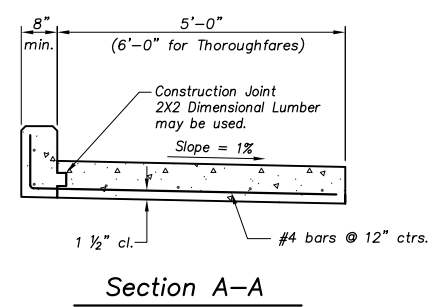


Vertical Expansion Joint Detail

Note: Vertical Expansion Joints required every 100'

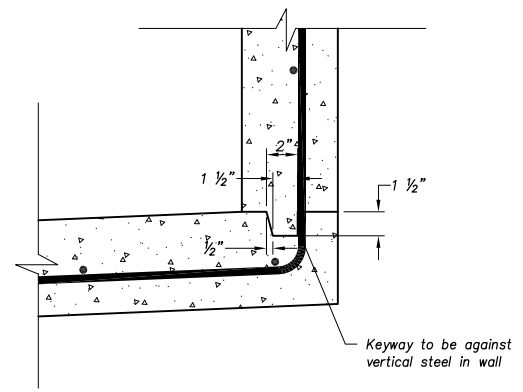
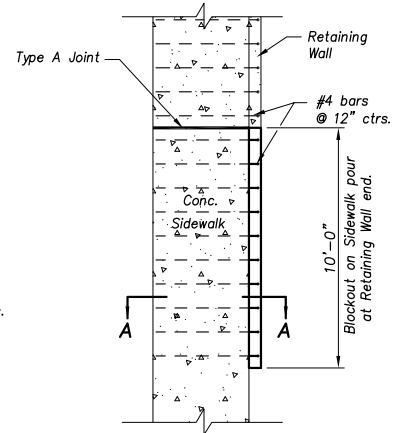


DETAIL A



Section A-A

END OF SIDEWALK RETAINING WALL BLOCKOUT DETAIL
Not to Scale



CONSTRUCTION JOINT DETAIL
Not to Scale

| INTEGRAL SIDEWALK AND RETAINING WALL | | | | |
|--------------------------------------|------|----------|-------------|------------------|
| STA. TO STA. | SIDE | LOCATION | HEIGHT FEET | LENGTH LIN. FEET |
| | | | | |
| | | | | |
| | | | | |
| | | | | |
| | | | | |
| | | | | |
| | | | | |
| | | | | |
| | | | | |
| | | | | |
| TOTAL: | | | | |

| REVISIONS: | NOTES: |
|---------------------|---------------------------|
| 02/15/00 | |
| 05/10/01 | MISCELLANEOUS; |
| 05/20/03 | WALL PATTERN; NOTES; |
| 07/01/03 | CONCRETE MIX DESIGNATION; |
| RELATED ORDINANCES: | |
| OPMC Title 13 | |

OVERLAND PARK
KANSAS
ABOVE AND BEYOND. BY DESIGN.
DEPARTMENT OF PUBLIC WORKS
STANDARD DETAILS
INTEGRAL SIDEWALK AND RETAINING WALL DETAIL

Year 2018 Edition