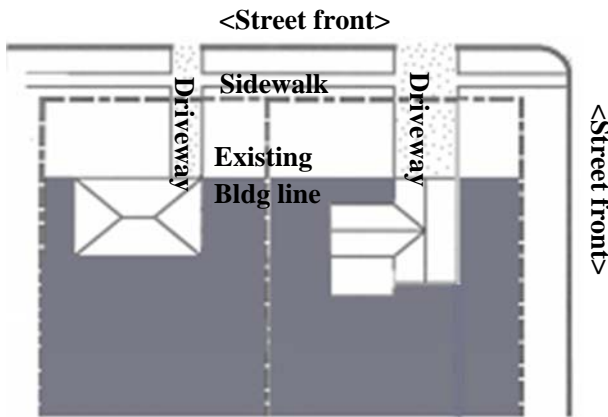


### Is there a penalty for storing solid waste and recycling containers improperly?

Yes. Failure to comply with storage of residential solid waste constitutes a violation of the city's ordinance and a ticket may be issued for each day solid waste is improperly stored.

Trash and recycling containers or bags can be stored in the gray areas and must be screened from view.



If you have questions or would like a copy of any of the following brochures, please contact Community Services at 913/895-6270.

## Information to Help You

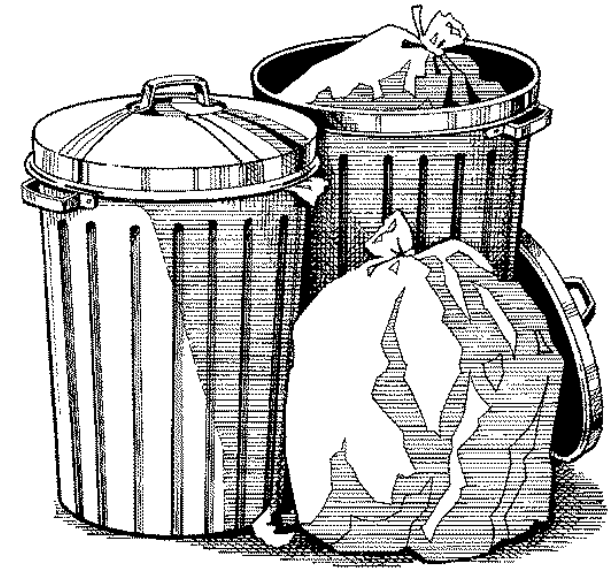
- Community Services
- Exterior Maintenance of Structures
- Exterior Storage of Items
- Fence Regulations
- Garage Sales
- Gravel Driveway Regulations
- Home Occupations
- Preventing Rat Infestation
- Property Maintenance
- Tall Grass and Weeds
- Temporary Signs
- Vehicles

July 2017  
Community Services Division  
8500 Antioch  
Overland Park, KS 66212  
Ph. 913/895-6270 Fax 913/895-5084  
<http://www.opkansas.org>

# Household Trash and Recyclables

Community Services

## Guidelines for Residential Household Waste



Planning and Development Services

**OVERLAND PARK**  
K A N S A S

ABOVE AND BEYOND. BY DESIGN.

# Household Trash and Recyclables

---

This brochure provides concise details from the **Chapter 7.36 COLLECTION AND STORAGE OF SOLID WASTE AND RECYCLABLES**. To view the complete ordinance, visit the City's website at [www.opkansas.org](http://www.opkansas.org).

## What are recyclables and solid waste?

"Recyclables" means any materials that will be used or reused. Recyclables includes, but is not limited to, paper, glass, plastic, and metal. This does not include Yard Waste.

Solid waste is trash. Residential solid waste means any unwanted or discarded waste materials in a solid, semi-liquid or liquid state. Solid waste includes, but is not limited to, garbage, ashes, dead animals, yard waste, tree limbs, appliances, etc.



## How should I store trash at my home?

Residential solid waste should be placed in closed trash containers (96 gallons or less) and/or disposable trash bags specifically designed and made for trash storage and collection. The containers and/or trash bags must be leakproof, waterproof and kept closed at all times while being stored.

Cardboard boxes and paper sacks are not acceptable trash containers. Food scraps and other household trash that attract animals or rodents must be placed in a covered trash container.

## Where should I store my trash and recycling containers?

Containers, empty or full, must be screened from view from the street or any neighboring property and located behind the existing building line or the front of the house.

Screening can be made from a fence, wall or landscaping but must be approved by Planning and Development Services at 913/895-6217.

The only exception is when your trash is placed for collection. The containers may be placed in front of your residence or next to the street no more than 24 hours before your scheduled trash pick up. Solid waste and recycling containers may not be placed in or on any curb, gutter, drainage area, sidewalk or paved portion of the street at any time for any purpose.

Solid waste and recycling containers placed next to the street, other than the 24 hours before a scheduled pick up, could be subject to immediate removal by the city and associated costs and administrative fees could be charged to the property owner.

## Am I required to put trash next to the curb for pickup?

No. Your hauler is required to offer houseline collection as an optional service. Check with your hauler, as they may charge an additional fee for this service. If you are physically unable to place your trash at the curb your hauler is required to have a policy in place to accommodate your needs. Contact your hauler for more information.

## I'm concerned that my trash cans will end up in the street.

Your collector is required to return your reusable container as far as the front line of your home to ensure that your container is not blown into the street.

## Who picks up trash in Overland Park?

All solid waste is collected by private contractors who must have a permit from the city. For a list of permitted contractors, call the Solid Waste Management Hotline at 913-895-5160.