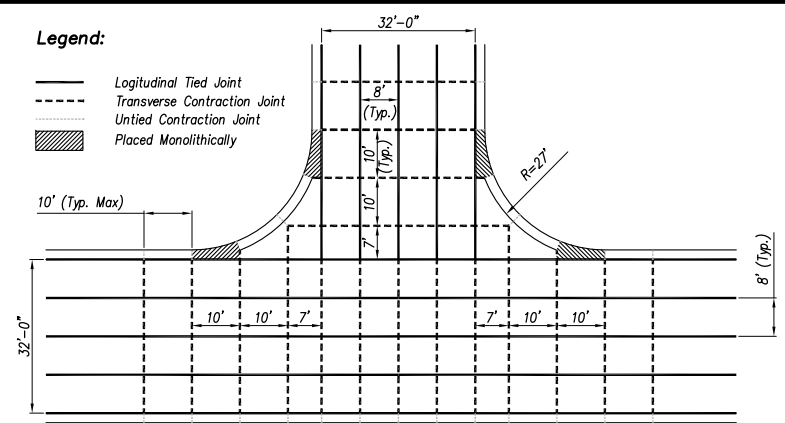


**Legend:**

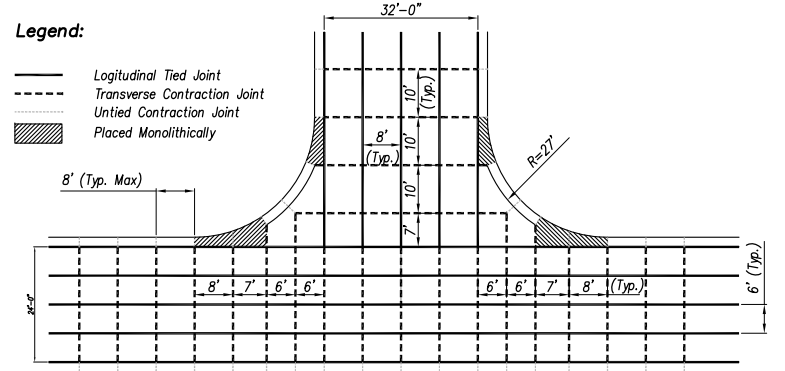
- Logitudinal Tied Joint
- - - Transverse Contraction Joint
- - - Untied Contraction Joint
- ▨ Placed Monolithically



**Typical Collector / Collector Intersection**

**Legend:**

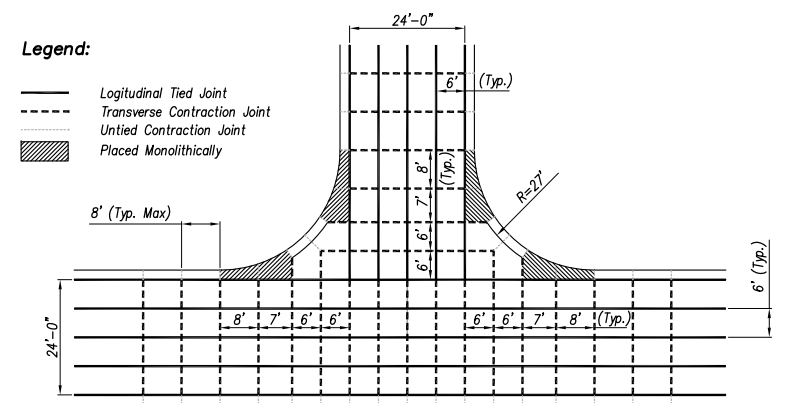
- Logitudinal Tied Joint
- - - Transverse Contraction Joint
- - - Untied Contraction Joint
- ▨ Placed Monolithically



**Typical Collector / Residential Intersection**

**Legend:**

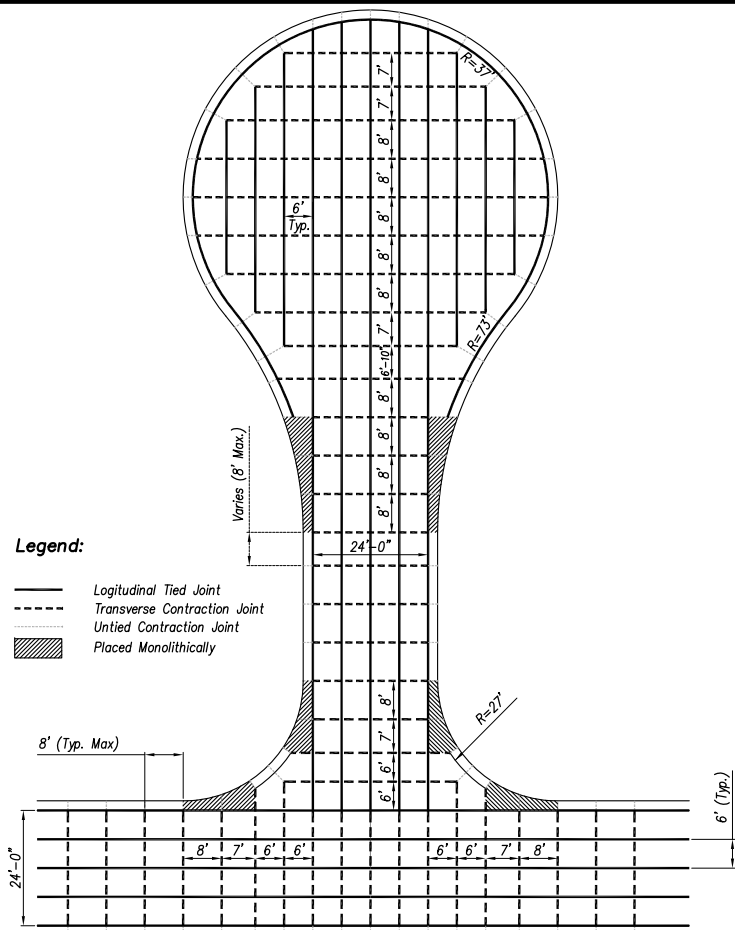
- Logitudinal Tied Joint
- - - Transverse Contraction Joint
- - - Untied Contraction Joint
- ▨ Placed Monolithically



**Typical Residential / Residential Intersection**

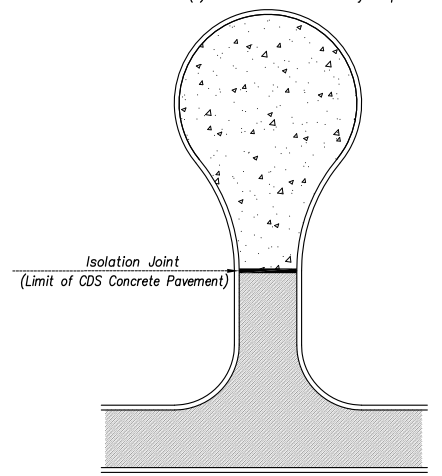
**Legend:**

- Logitudinal Tied Joint
- - - Transverse Contraction Joint
- - - Untied Contraction Joint
- ▨ Placed Monolithically



**Typical Residential CDS (\*)**

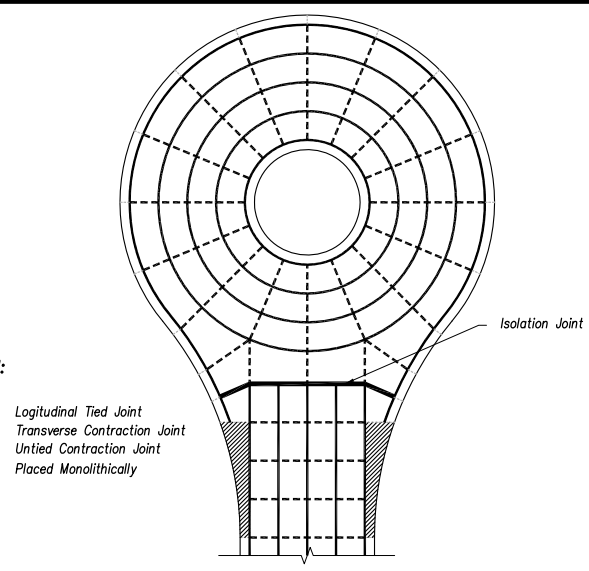
(\*) - Curb and Gutter may be placed monolithically



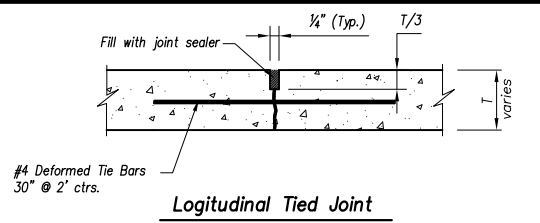
**Concrete CDS at Asphalt Street**

**Legend:**

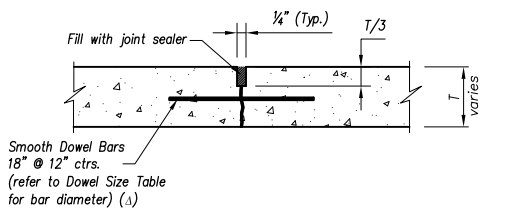
- Logitudinal Tied Joint
- - - Transverse Contraction Joint
- - - Untied Contraction Joint
- ▨ Placed Monolithically



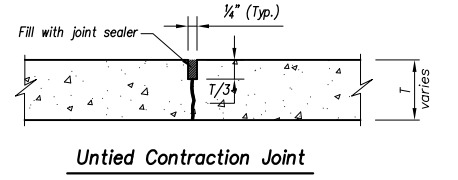
**Residential CDS with Island**



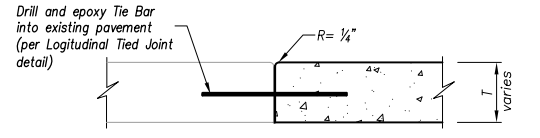
**Logitudinal Tied Joint**



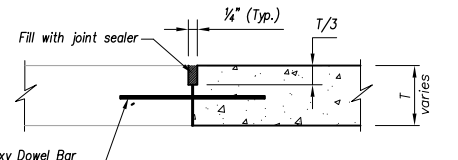
**Transverse Contraction Joint**



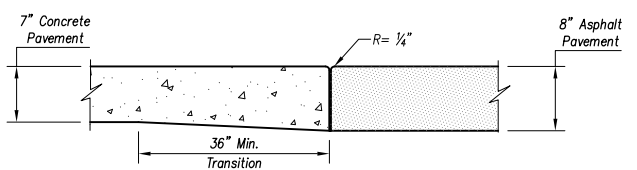
**Untied Contraction Joint**



**Logitudinal Construction Joint**



**Transverse Construction Joint**



**Isolation Joint at Residential Asphalt Street**

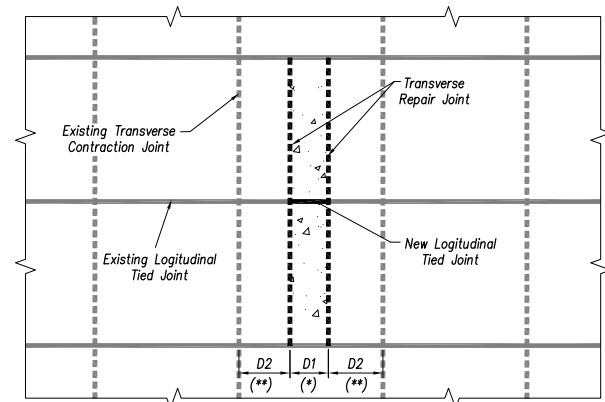
**Joint Details**

(Δ) - no Dowel Bars when  $T \leq 7'$

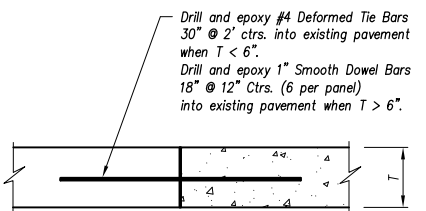
Note: Tie bars shall not be less than 12" from end of Dowel Bars.

**Dowel Size**

T (in.)	Diameter
$T \leq 7$	No Dowels Required
$7 < T < 9$	1"
$T \geq 9$	1 1/4"

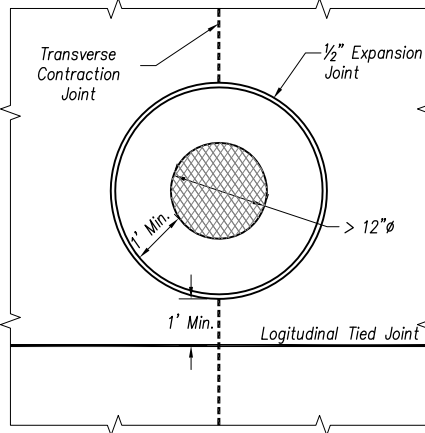


**Concrete Street Repair**



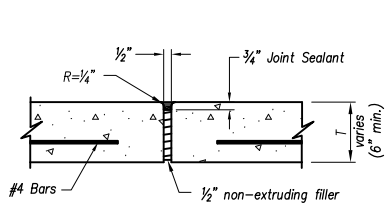
**Transverse Repair Joint**

(\*) - When street repair (D1) is greater than 50% of the slab, replace the entire slab.  
 (\*\*) - When the distance between the repair joint and the existing joint (D2) is less than 3', replace panel to the existing joint. (See Transverse Construction Joint Detail). When D2 is more than 3' - see Transverse Repair Joint Detail.



**Boxout for Casting in Pavement**

The Contractor shall submit a final jointing plan to the City two weeks prior to beginning of pavement construction. No concrete pavement shall be constructed without prior approval of the jointing plan by the City Engineer.



**Expansion Joint**

REVISIONS:	
RELATED ORDINANCES:	
OPMC Title 13	

Year 2018 Edition

**OVERLAND PARK**  
KANSAS  
ABOVE AND BEYOND. BY DESIGN.

DEPARTMENT OF PUBLIC WORKS  
STANDARD DETAILS

**CONCRETE JOINT LAYOUT**