

REQUIREMENTS FOR RESIDENTIAL OR COMMERCIAL DRIVEWAY APPROACHES WITHIN CITY RIGHT-OF-WAY

- Construction/demolition activities being performed in the Right-of-Way prior to obtaining a permit will be assessed a double permit fee.
- Prior to excavation, you **must** obtain utility locates before an inspection will be performed. Utility locates are listed below, as well as on the Right-of-Way application and permit. The telephone numbers are –

**Dig-Safe
Water District #1**

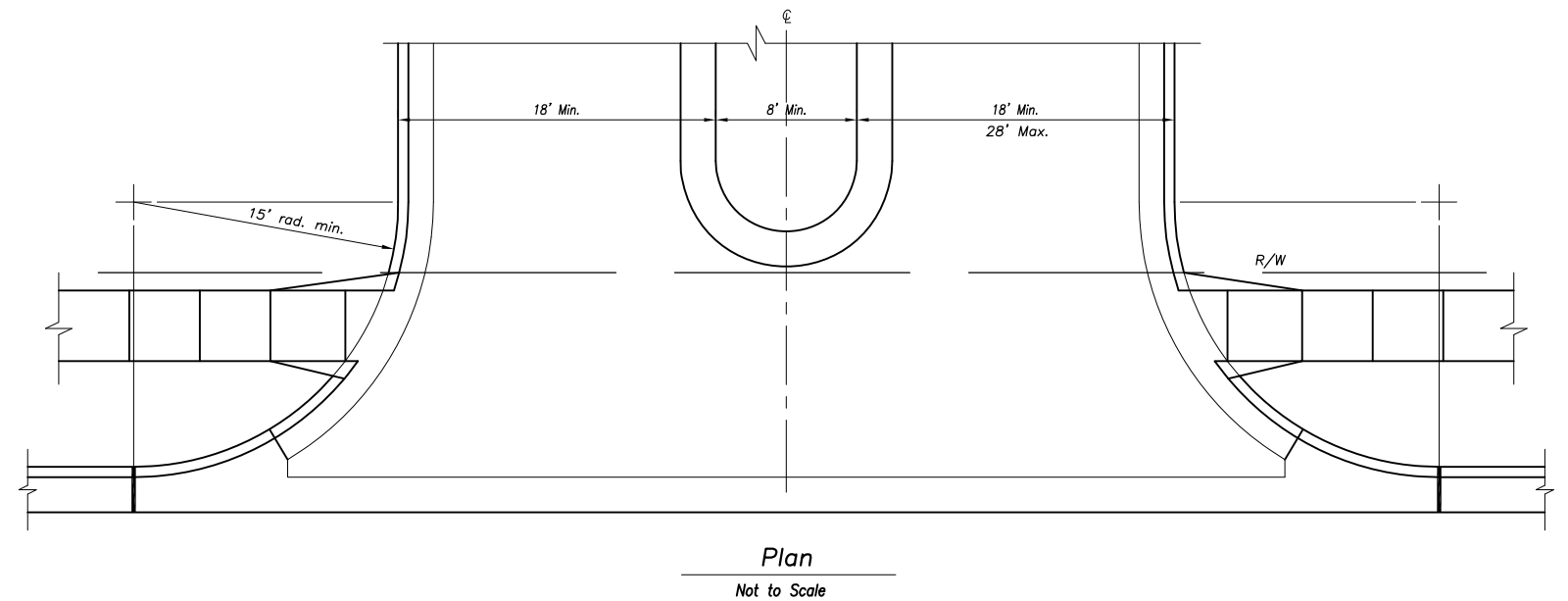
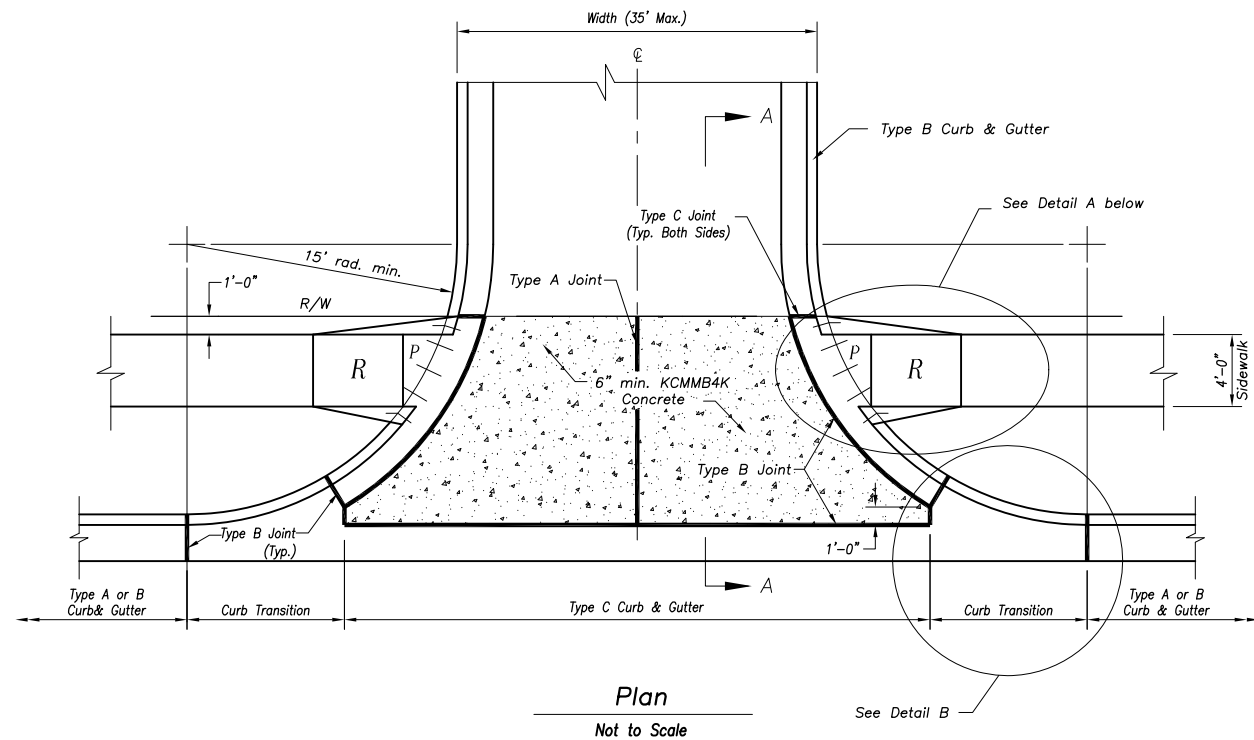
**811 or 1-800-344-7233
913-895-1806**

- You must use minimum 4000 lb KCMMB (Kansas City Metropolitan Materials Board) approved concrete mix in the approach. A copy of the delivery ticket must be sent to the Right-of-Way management via mail or fax, which are listed below:

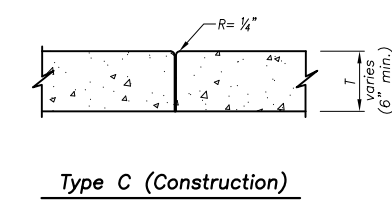
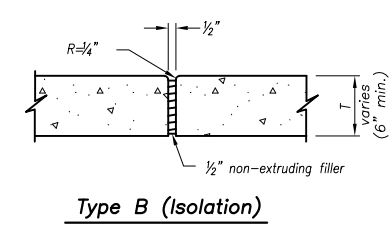
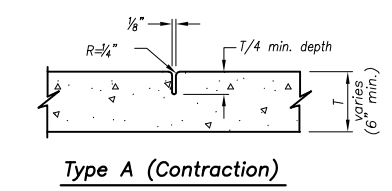
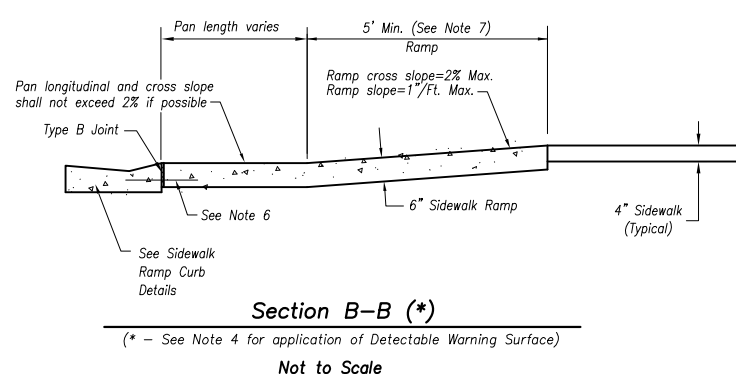
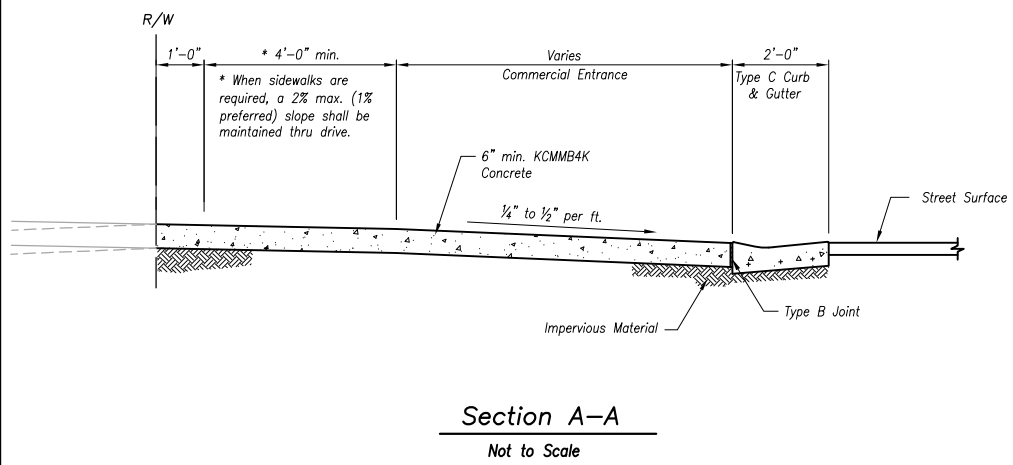
MAIL TO:
City of Overland Park
Attn: Right-of-Way Manager
Public Works Department
8500 Santa Fe Drive
Overland Park, KS 66212

FAX TO: 913-890-1055

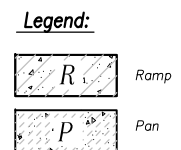
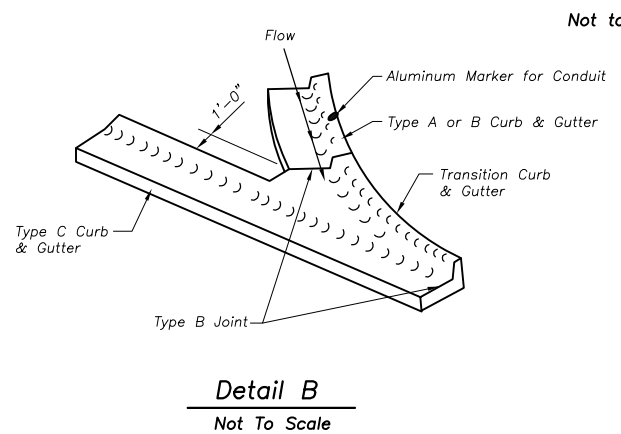
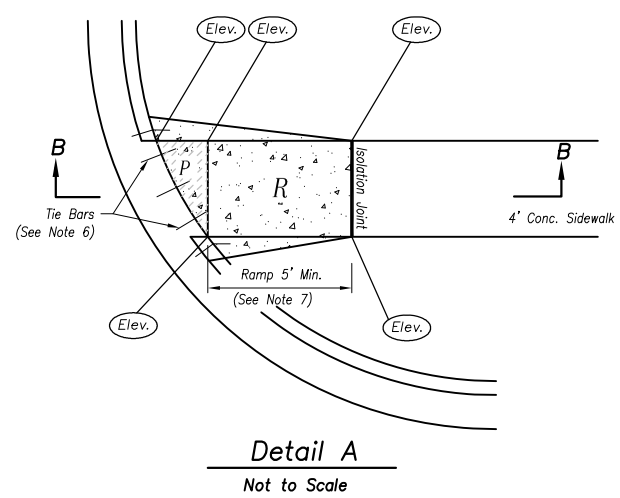
- Approach must be 2' off property line, except for wings.
- Total concrete area not to exceed 35% of front yard, not counting Right-of-Way area.
- Driveway not to exceed 35' width at curb.
- Rebar or wire is not required in the approach, but is not prohibited. If rebar is used, do not tie into curb, driveway or sidewalk.
- Sub grade must be compacted.
- Sidewalk, on either side of driveway, must be the same elevation as driveway to avoid a trip hazard. You may be required to replace sidewalk.
- Concrete must be tool jointed and not saw jointed.
- Must use 6" expansion at curb and sidewalk.
- Do not install joints which would define a sidewalk. (No transverse joints in approach section).
- Install 3' x 6' wings when possible.
- Must have 6" depth from back of curb to 10' (Right-of-Way line) behind curb.
- Must schedule a forms inspection 24 hours in advance - call **913-895-5184**.



COMMERCIAL ENTRANCE WITH MEDIAN



- Commercial Drive Notes:**
1. Overland Park Municipal Code (OPMC) and Overland Park Design and Construction Standards Manual (OPDCSM) are incorporated, except as otherwise noted.
 2. KCMMB4K Concrete shall be used throughout.
 3. Concrete pavement shall be jointed with Type A joints. No jointed slab shall exceed 12' x 12'.
 4. Detectable warning surfaces are not allowed at non-signalized entrances. For signalized entrances use Type A ramp as shown on "Sidewalk and Sidewalk Ramp Details".
 5. ADA compliance will be measured at points labeled (Elev.).
 6. Install 18" tie bars #4 epoxy coated @ 18" o.c. and through wings as shown.
 7. Sidewalk Ramp shall be lengthened to provide ADA compliance slope but need not exceed 15'.
 8. ADA maximum ramp slope = 1"/ft. ADA maximum cross slope = 2%.
 9. Top of curb elevations shall be shown at quarter points and curb returns.
 10. Any additional steel reinforcement shall be approved by the City Engineer.
 11. See Curb Replacement Detail for additional requirements.



JOINT DETAILS
Not to Scale

COMMERCIAL ENTRANCE DETAIL
(2011 Edition)

<p>REVISIONS:</p> <p>07/01/03 Concrete Mix Designation;</p> <p>Jan. 2005 ADA Compliance;</p> <p>Feb. 2008 Miscellaneous;</p> <p>Jan. 2009 Joint Locations; Miscellaneous;</p>		<p>Year 2011 Edition</p> <p>OVERLAND PARK KANSAS</p> <p>ABOVE AND BEYOND. BY DESIGN.</p> <p>DEPARTMENT OF PUBLIC WORKS STANDARD DETAILS</p> <p>COMMERCIAL DRIVE DETAIL</p>
<p>RELATED ORDINANCES:</p> <p>OPMC Title 13</p>		
<p>DATE: 08/10/08</p>		<p>SHEET: 8</p>