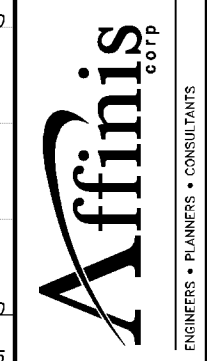
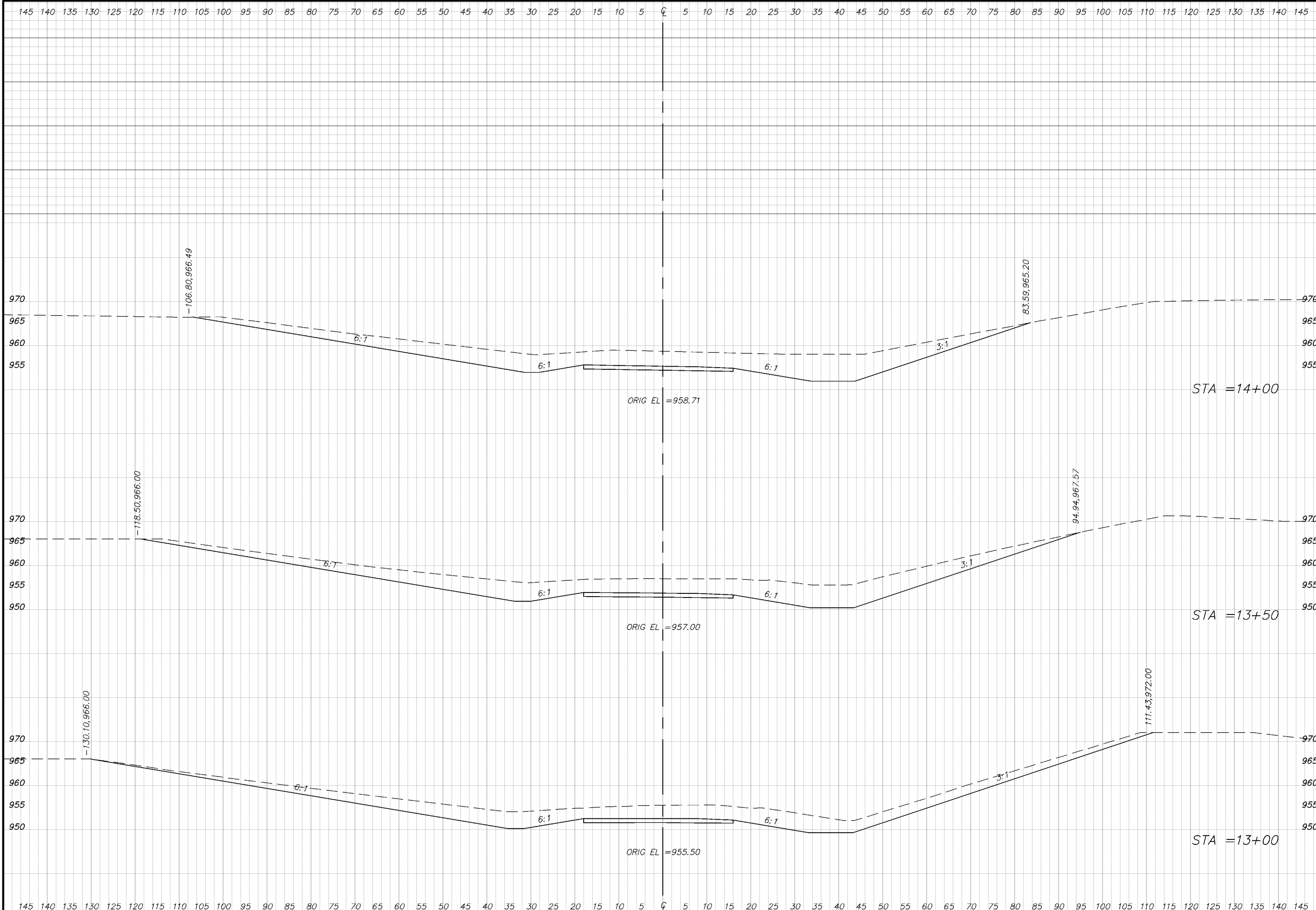


Drawn: Checked: Approved:
 Noted:
 Issued:
 File name: Job # 04-0602-0100
 Date: 04/04/04

7401 West 129th Street, Suite 110
 Overland Park, Kansas 66213
 Phone: 913-239-1100
 Toll Free: 877-527-5488
 Fax: 913-239-1111
 www.affinis.us



CITY OF OVERLAND PARK, KS
 2003 PRELIMINARY ENGINEERING STUDY
 US-69 N.B. RAMP CROSS SECTIONS



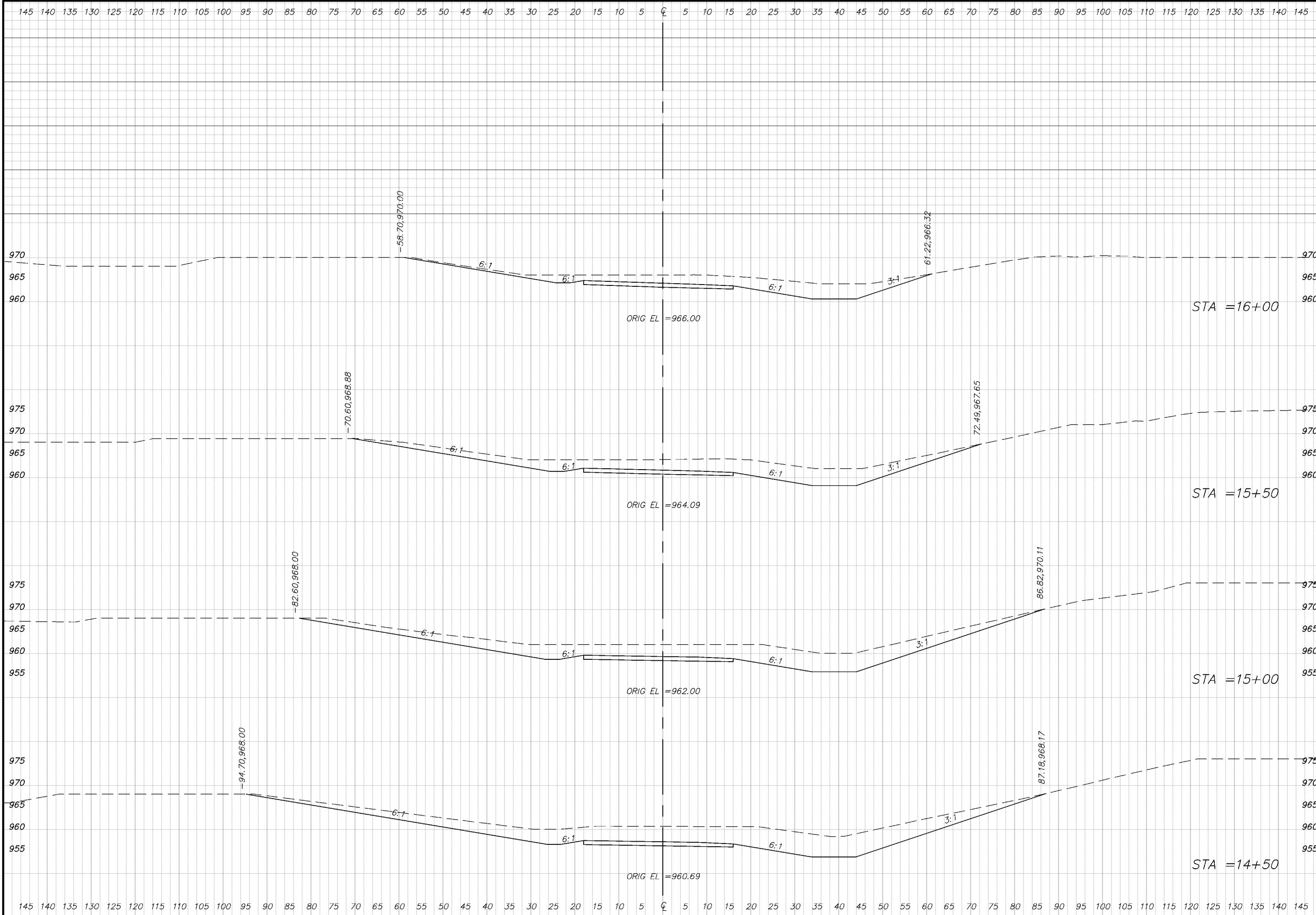
Drawn: Checked: Approved:
Notes:
Issued:
Filemark: Job # 04-0892-0100
Drawn:

7401 West 129th Street, Suite 110
 Overland Park, Kansas 66213
 Phone: 913-239-1100
 Toll Free: 877-527-5488
 Fax: 913-239-1111
 www.affinis.us



CITY OF OVERLAND PARK, KS
 2003 PRELIMINARY ENGINEERING STUDY
 US-69 N.B. RAMP CROSS SECTIONS

STA = 14+00
 STA = 13+50
 STA = 13+00

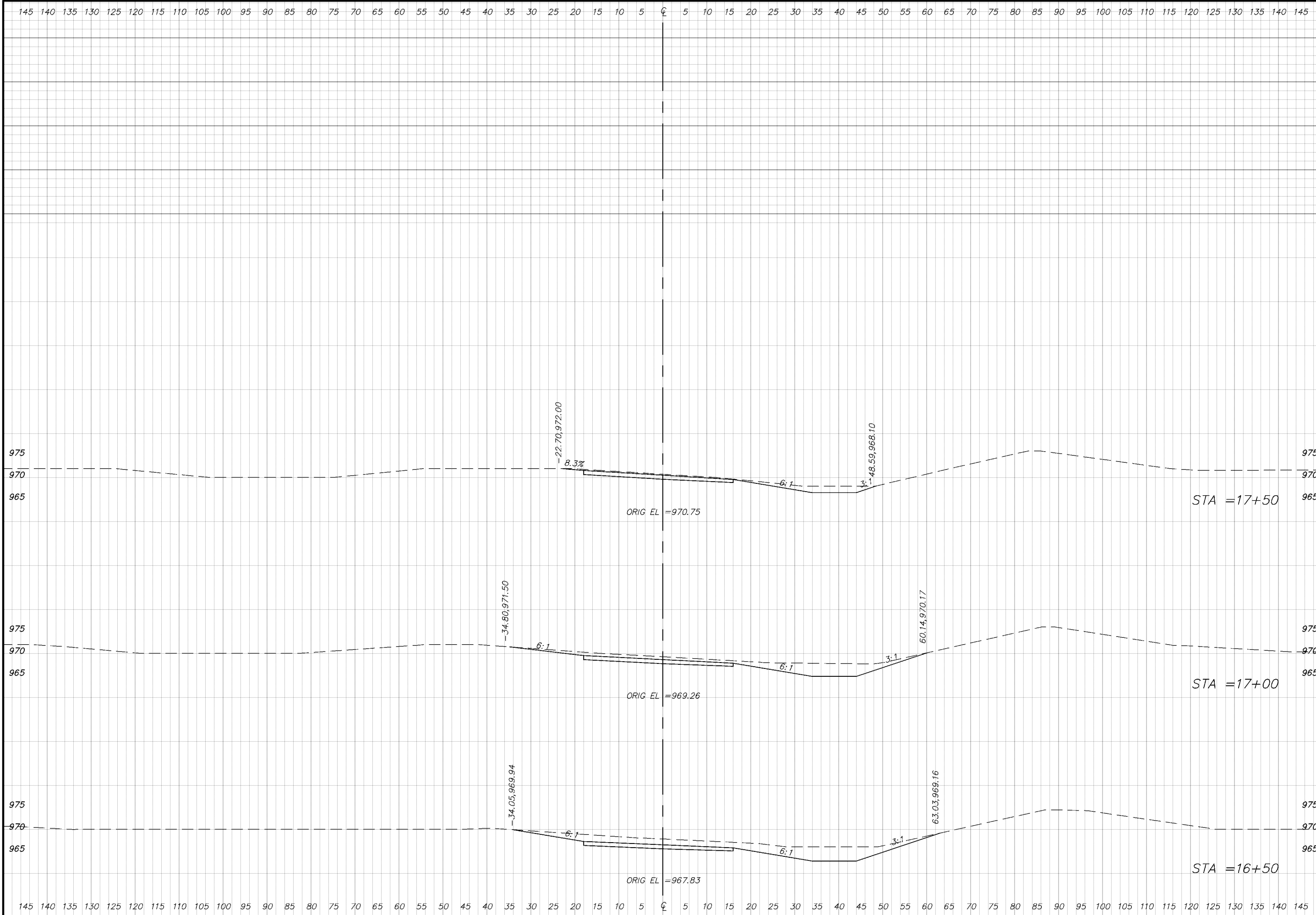


Drawn: Checked: Approved:
 Issued: Notes:
 Filemark: Job # 04-0692-0100
 Drawn:

7401 West 129th Street, Suite 110
 Overland Park, Kansas 66213
 Phone: 913-239-1100
 Toll Free: 877-527-5488
 Fax: 913-239-1111
 www.affinis.us

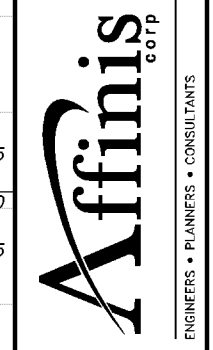


CITY OF OVERLAND PARK, KS
 2003 PRELIMINARY ENGINEERING STUDY
 US-69 N.B. RAMP CROSS SECTIONS



Drawn: Checked: Approved:
Notes:
Issued:
Filemark: Job # 04-0892-0100
Drawn:

7401 West 129th Street, Suite 110
 Overland Park, Kansas 66213
 Phone: 913-239-1100
 Toll Free: 877-527-5488
 Fax: 913-239-1111
 www.affinis.us



CITY OF OVERLAND PARK, KS
 2003 PRELIMINARY ENGINEERING STUDY
 US-69 N.B. RAMP CROSS SECTIONS