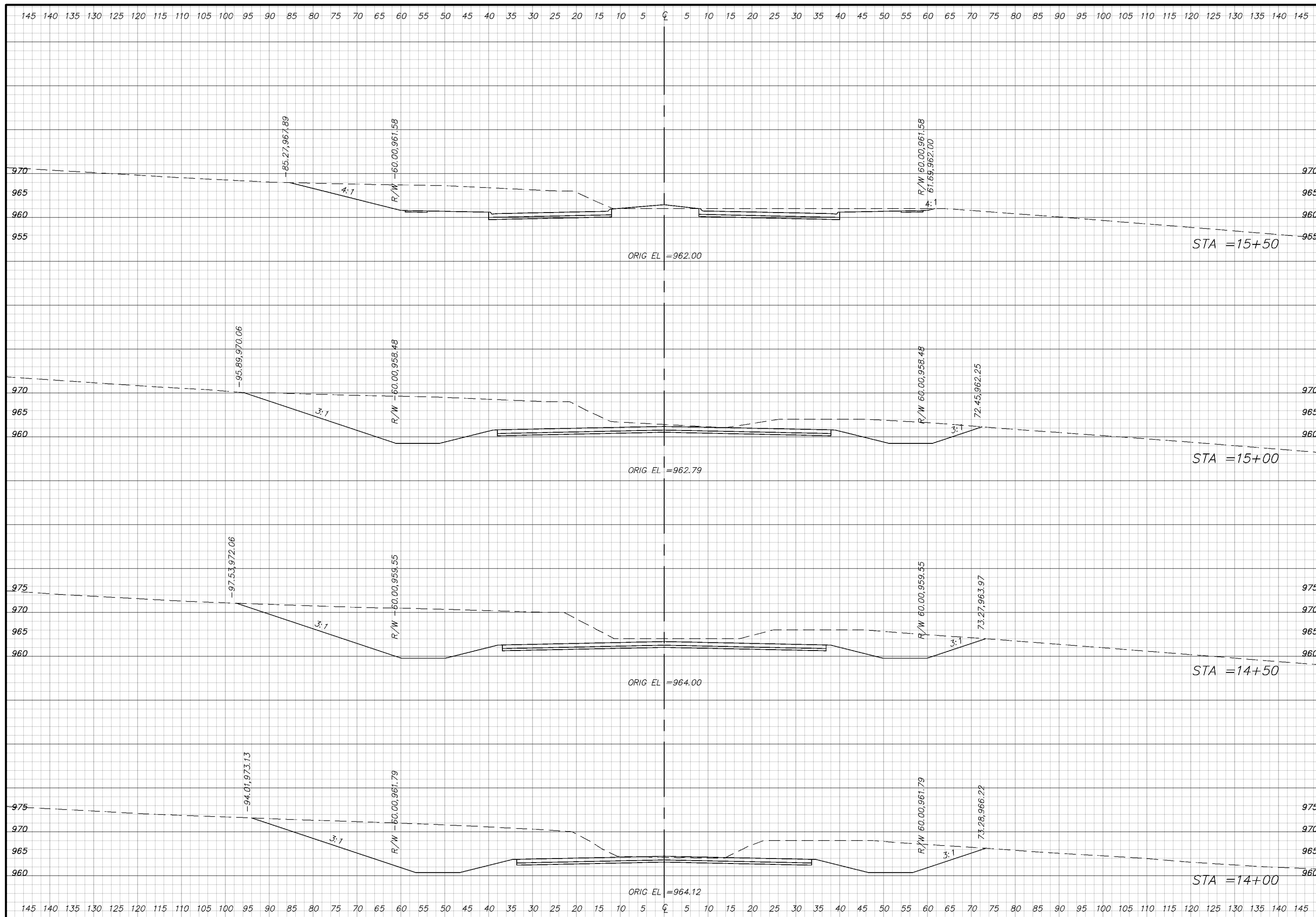


Drawn: Checked: Approved:  
 Issued: Notes:  
 Planning Job # 04-0602-0100  
 Drawn:

7401 West 129th Street, Suite 110  
 Overland Park, Kansas 66213  
 Phone: 913-239-1100  
 Toll Free: 877-527-5488  
 Fax: 913-239-1111  
 www.affinis.us  
 Building long-lasting relationships



CITY OF OVERLAND PARK, KS  
 2003 PRELIMINARY ENGINEERING STUDY  
 METCALF AVENUE CROSS SECTIONS



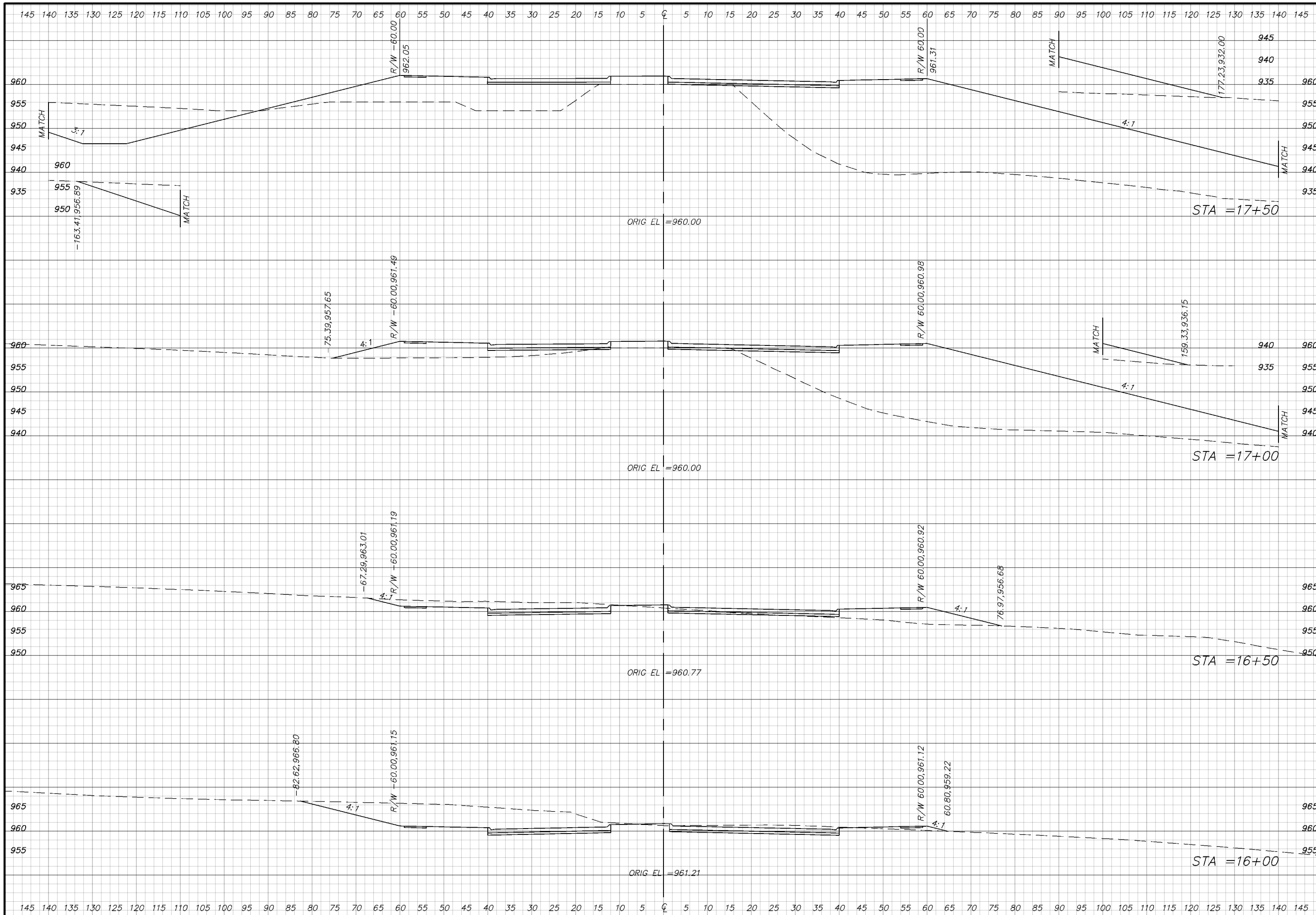
Drawn: Checked: Approved:  
 Notes:  
 Issues:  
 Filemark: Job # 04-0892-0100  
 Date:

7401 West 129th Street, Suite 110  
 Overland Park, Kansas 66213  
 Phone: 913-239-1100  
 Toll Free: 877-527-5488  
 Fax: 913-239-1111  
 www.affinis.us  
 Building long-lasting relationships

**Affinis**  
 corp  
 ENGINEERS • PLANNERS • CONSULTANTS

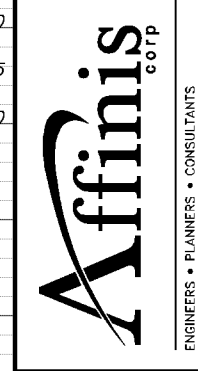
CITY OF OVERLAND PARK, KS  
 2003 PRELIMINARY ENGINEERING STUDY  
 METCALF AVENUE CROSS SECTIONS

**330**  
 330 OF 338

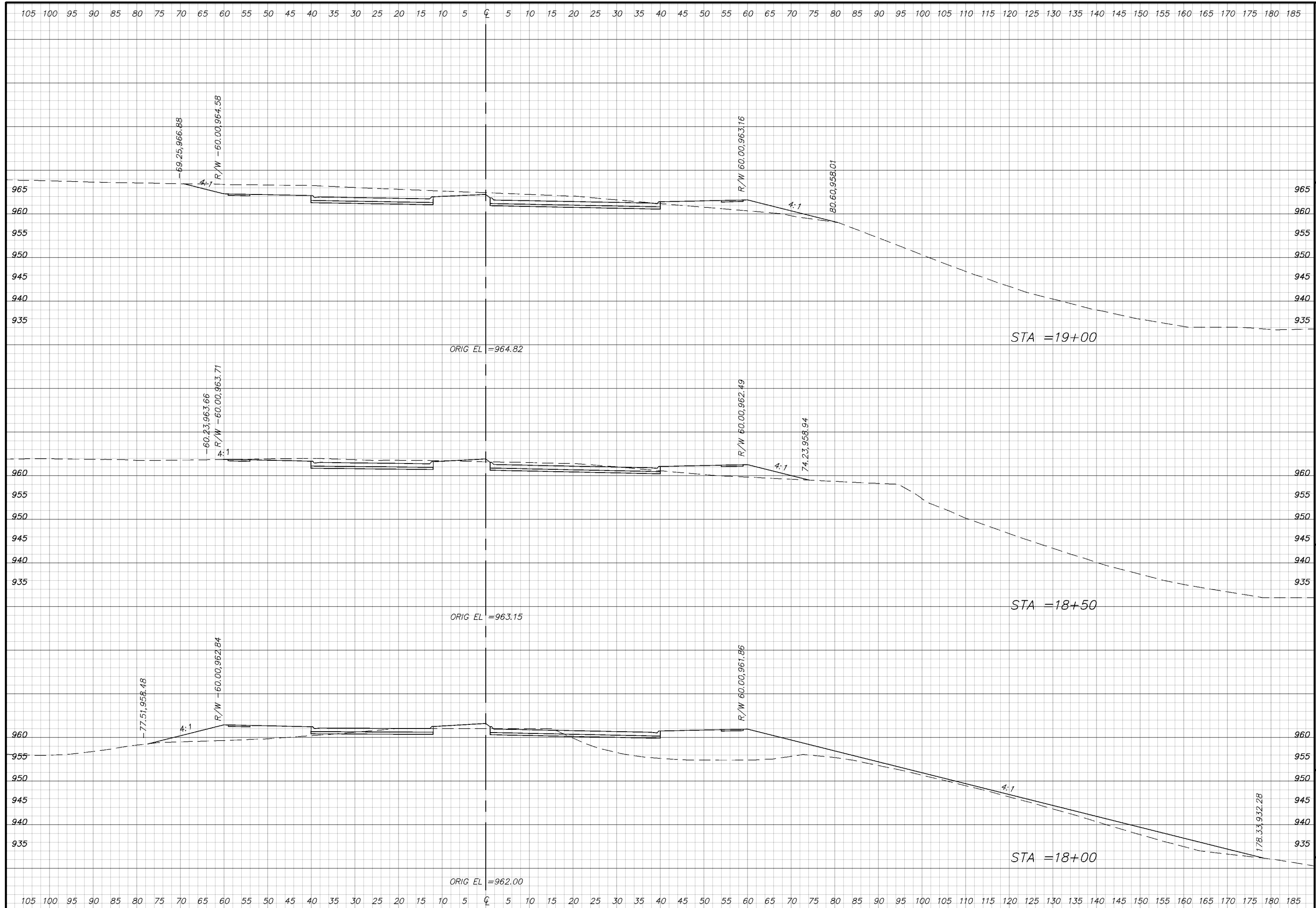


Drawn: Checked: Approved:  
 Notes:  
 Issues:

7401 West 129th Street, Suite 110  
 Overland Park, Kansas 66213  
 Phone: 913-239-1100  
 Toll Free: 877-527-5488  
 Fax: 913-239-1111  
 www.affinis.us



CITY OF OVERLAND PARK, KS  
 2003 PRELIMINARY ENGINEERING STUDY  
 METCALF AVENUE CROSS SECTIONS



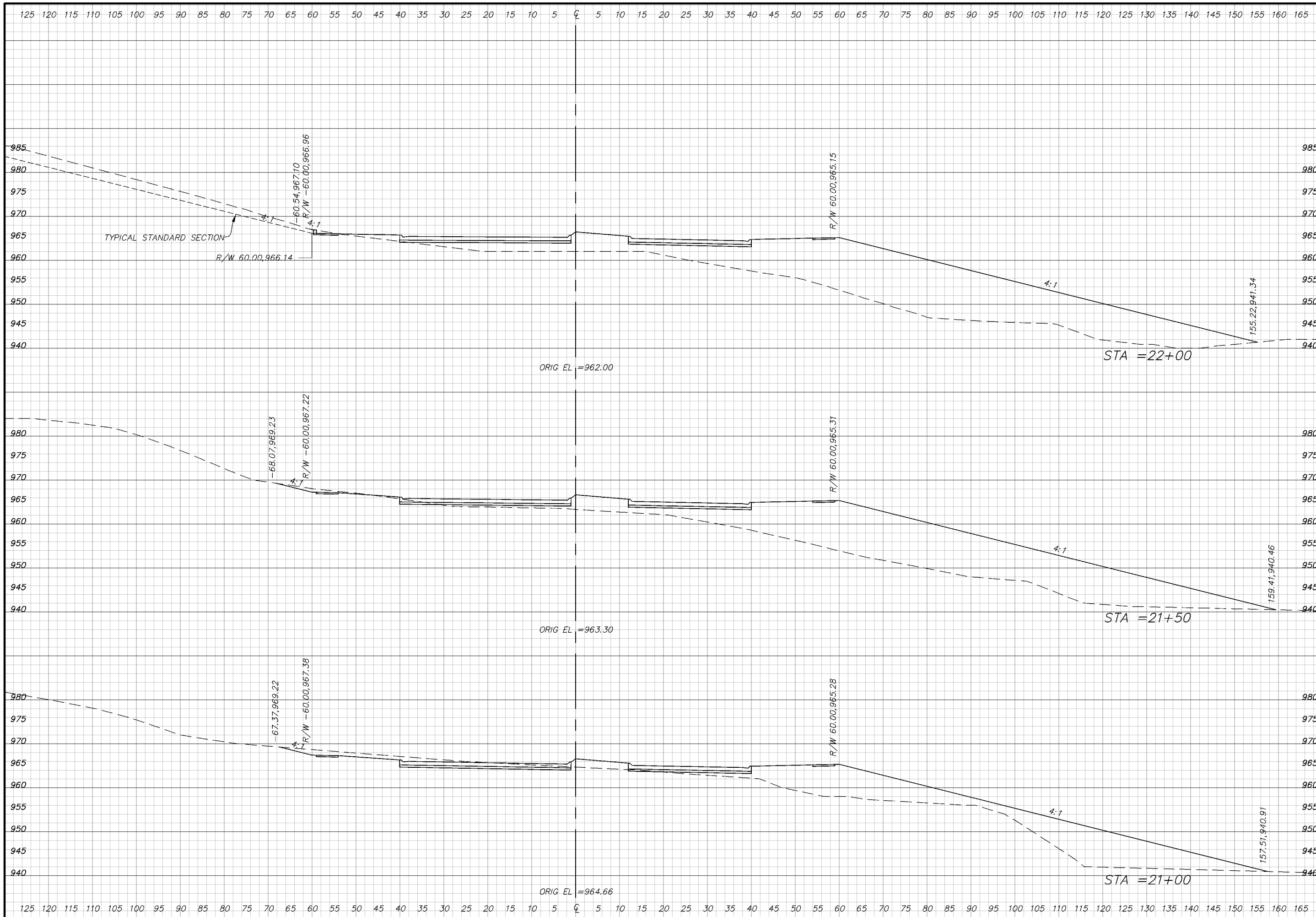
Drawn: Checked: Approved:  
 Notes:  
 Issues:  
 Date:  
 Job #: 04-0692-0100  
 Drawn:

7401 West 129th Street, Suite 110  
 Overland Park, Kansas 66213  
 Phone: 913-239-1100  
 Toll Free: 877-527-5488  
 Fax: 913-239-1111  
 www.affinis.us

**Affinis**  
 corp  
 ENGINEERS • PLANNERS • CONSULTANTS  
 Building long-lasting relationships

CITY OF OVERLAND PARK, KS  
 2003 PRELIMINARY ENGINEERING STUDY  
 METCALF AVENUE CROSS SECTIONS

**332**  
 332 OF 338



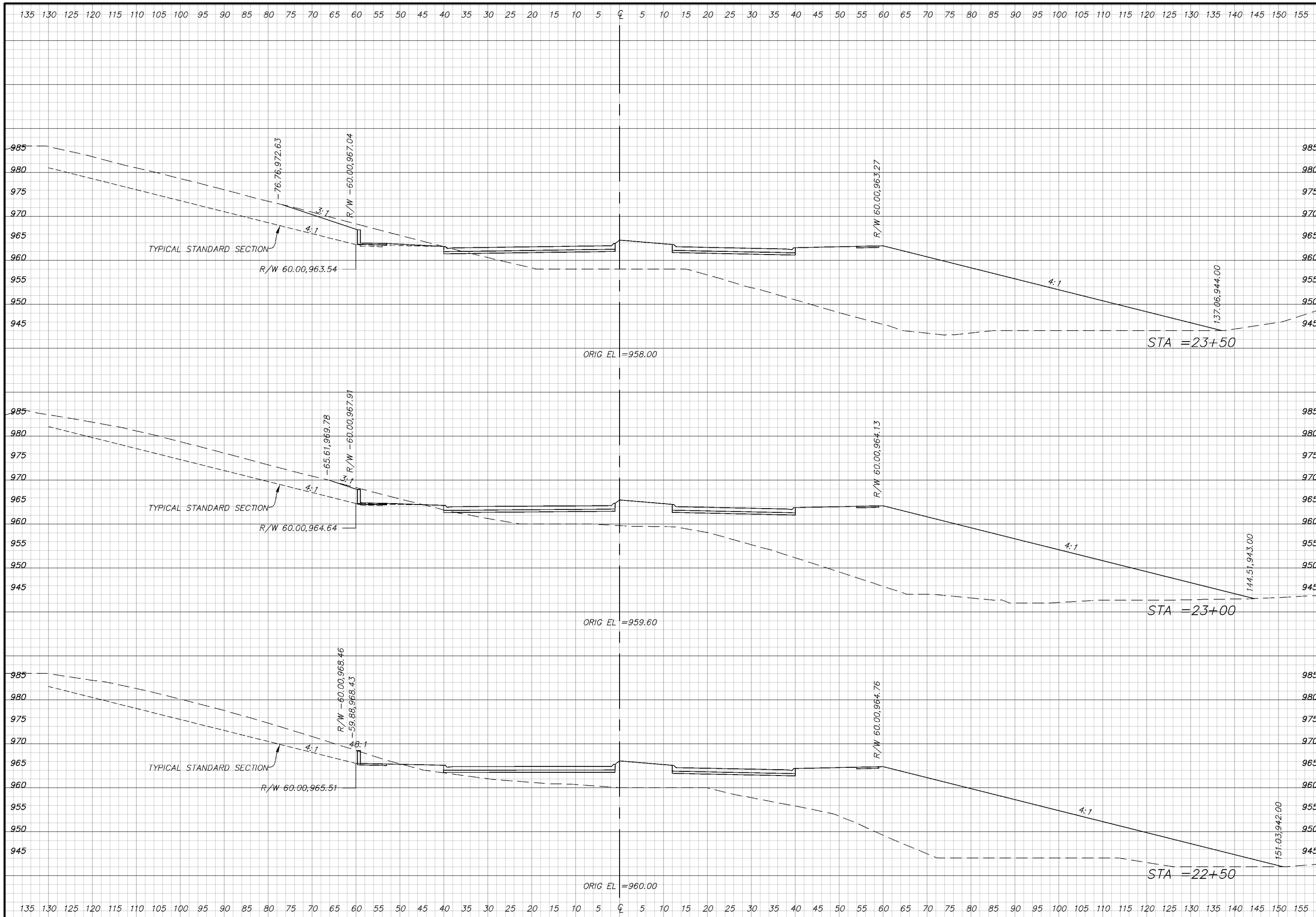
Drawn: Checked: Approved:  
 Notes:  
 Issues:  
 Date: 10/20/03  
 Job #: 03-0892-0100  
 Designer:

7401 West 129th Street, Suite 110  
 Overland Park, Kansas 66213  
 Phone: 913-239-1100  
 Toll Free: 877-527-5488  
 Fax: 913-239-1111  
 www.affinis.us  
 Building long-lasting relationships

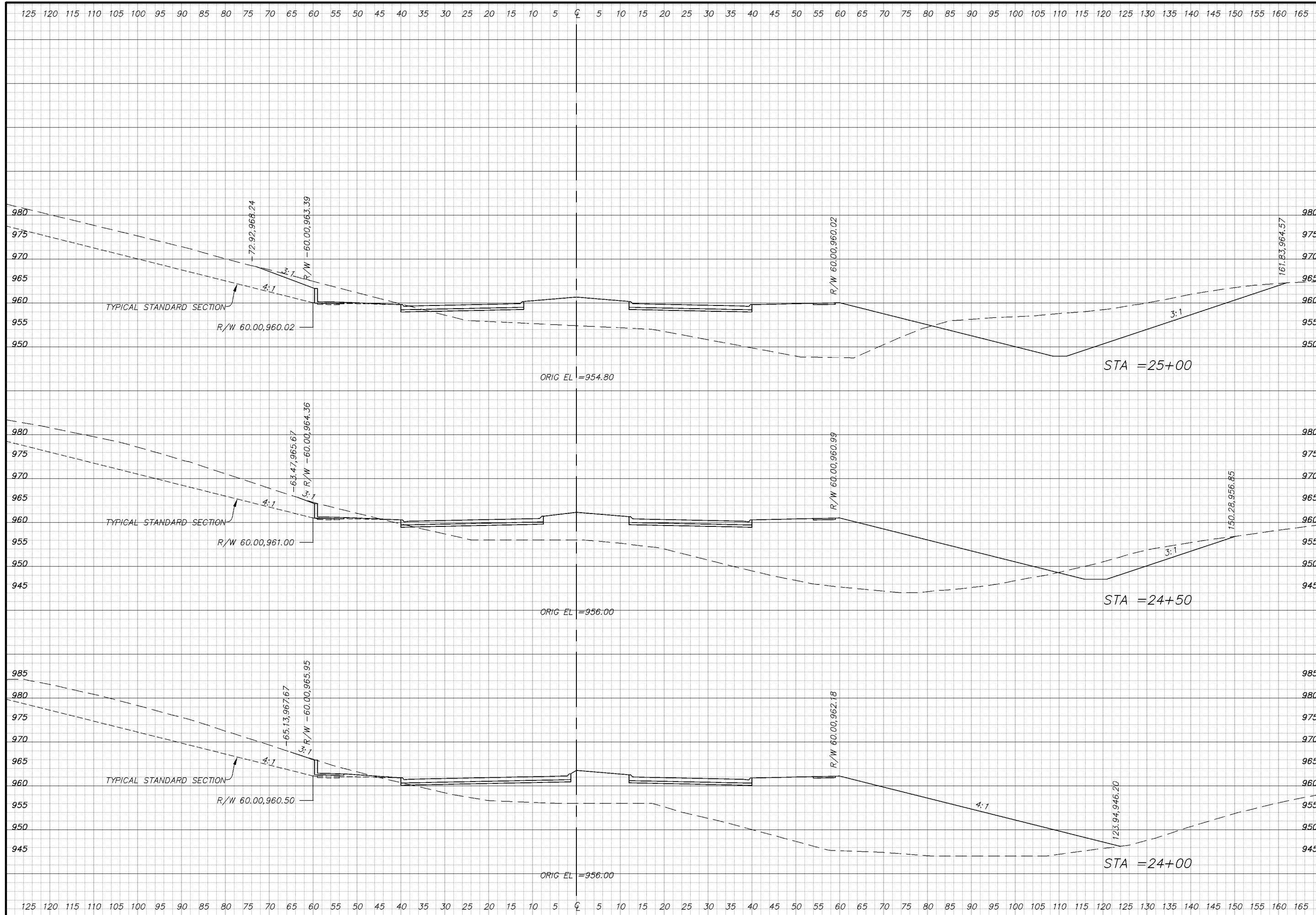
**Affinis**  
 corp  
 ENGINEERS • PLANNERS • CONSULTANTS

CITY OF OVERLAND PARK, KS  
 2003 PRELIMINARY ENGINEERING STUDY  
 METCALF AVENUE CROSS SECTIONS

**333**  
 333 OF 338

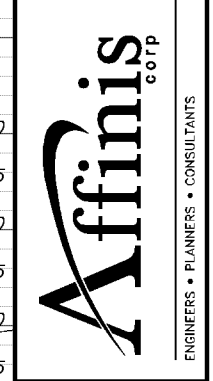


Drawn: Checked: Approved:  
 Notes:  
 7401 West 129th Street, Suite 110  
 Overland Park, Kansas 66213  
 Phone: 913-239-1100  
 Toll Free: 877-527-5488  
 Fax: 913-239-1111  
 www.affinis.us  
 Building long-lasting relationships  
 ENGINEERS • PLANNERS • CONSULTANTS  
 Affinis  
 corp  
 CITY OF OVERLAND PARK, KS  
 2003 PRELIMINARY ENGINEERING STUDY  
 METCALF AVENUE CROSS SECTIONS  
**334**  
 334 OF 338



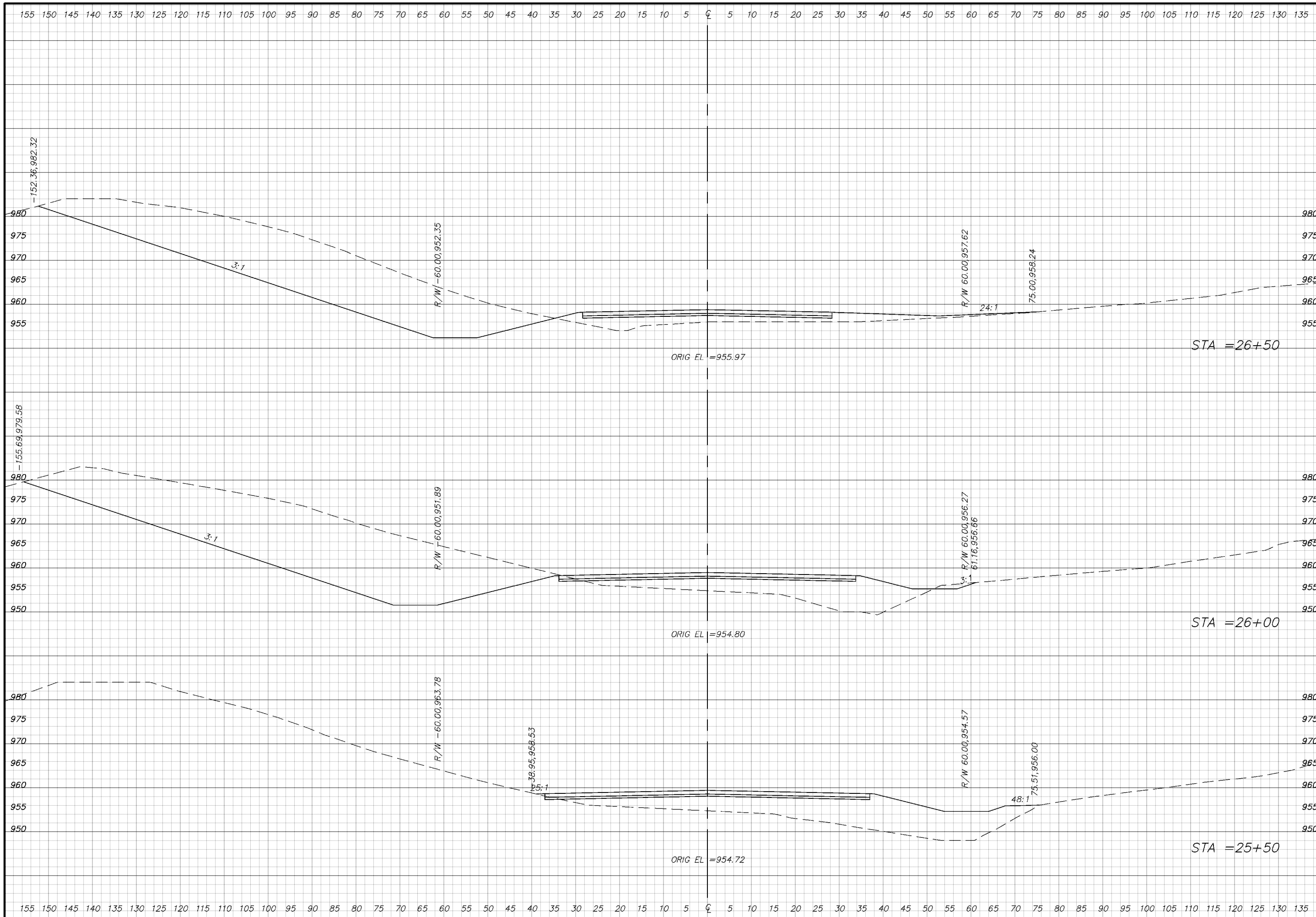
Drawn: Checked: Approved:  
 Noted:  
 Issued:  
 Date: 04-08-03 0100  
 Designer:

7401 West 129th Street, Suite 110  
 Overland Park, Kansas 66213  
 Phone: 913-239-1100  
 Toll Free: 877-527-5488  
 Fax: 913-239-1111  
 www.affinis.us  
 Building long-lasting relationships



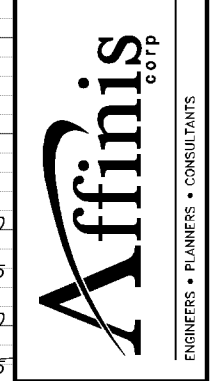
CITY OF OVERLAND PARK, KS  
 2003 PRELIMINARY ENGINEERING STUDY  
 METCALF AVENUE CROSS SECTIONS

**335**  
 335 OF 338



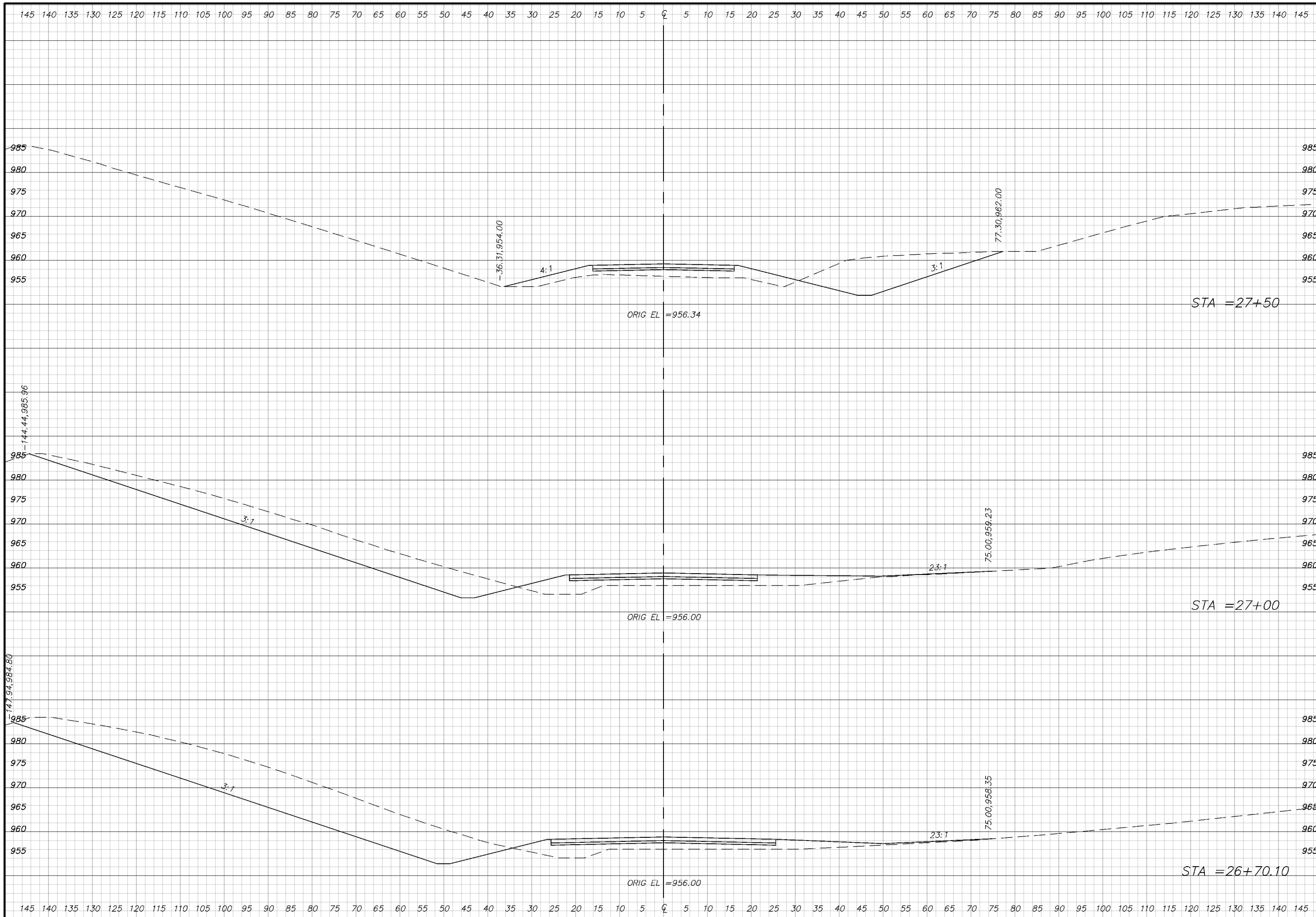
Drawn: Checked: Approved:  
 Notes:  
 Issues:  
 Date: Job # 04-0892-0100  
 Drawn:

7401 West 129th Street, Suite 110  
 Overland Park, Kansas 66213  
 Phone: 913-239-1100  
 Toll Free: 877-527-5488  
 Fax: 913-239-1111  
 www.affinis.us  
 Building long-lasting relationships

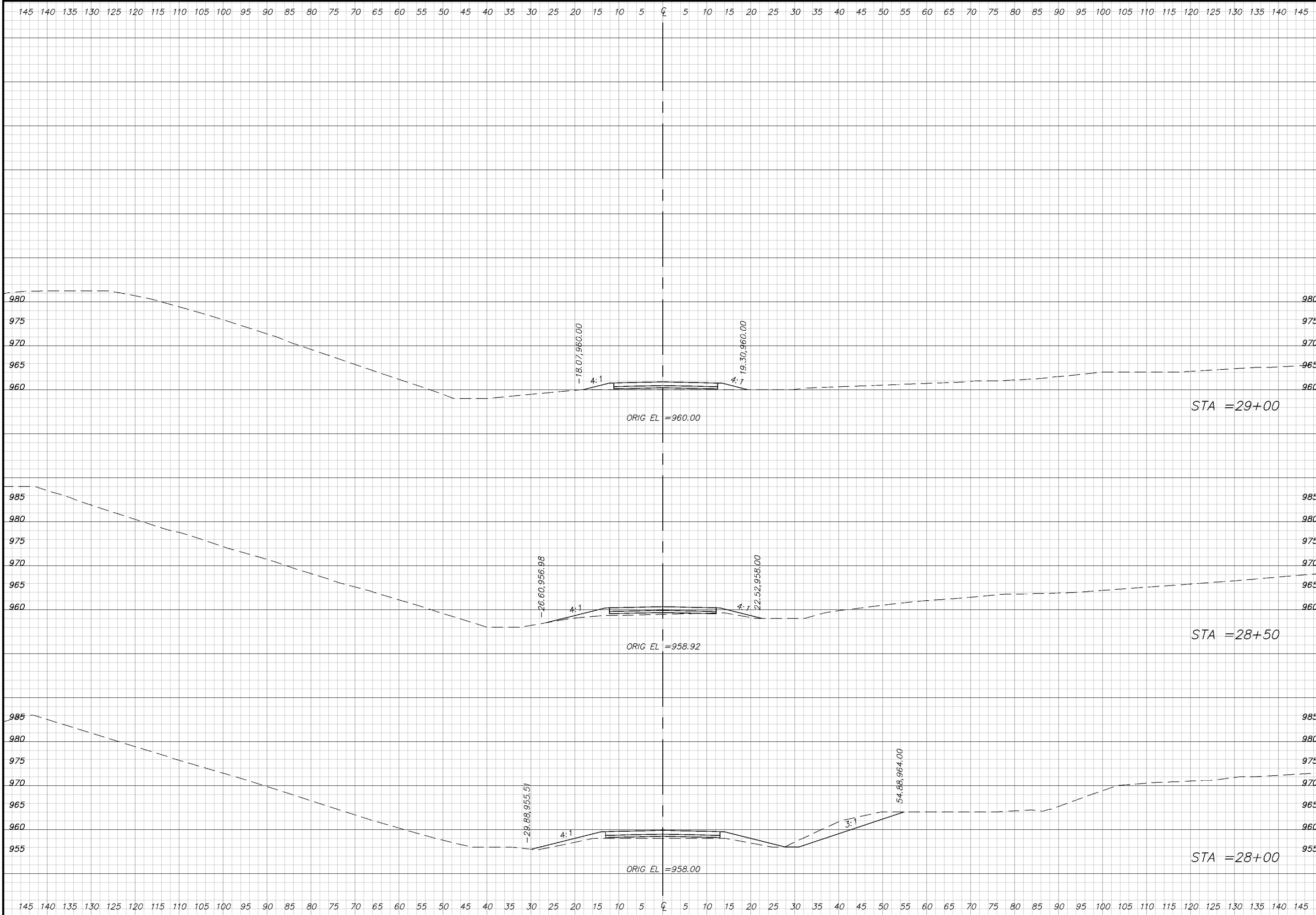


CITY OF OVERLAND PARK, KS  
 2003 PRELIMINARY ENGINEERING STUDY  
 METCALF AVENUE CROSS SECTIONS



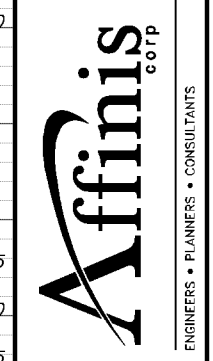


<p>Drawn: Checked: Approved:</p> <p>Notes:</p> <p>Issued:</p>	<p>7401 West 129th Street, Suite 110 Overland Park, Kansas 66213 Phone: 913-239-1100 Toll Free: 877-527-5488 Fax: 913-239-1111 www.affinis.us</p>
<p><b>Affinis</b> corp</p> <p>ENGINEERS • PLANNERS • CONSULTANTS</p>	
<p>CITY OF OVERLAND PARK, KS 2003 PRELIMINARY ENGINEERING STUDY METCALF AVENUE CROSS SECTIONS</p>	
<p><b>337</b> 337 OF 338</p>	



Drawn: Checked: Approved:  
 Noted:  
 Issued:  
 Date: 10/09/03  
 Job #: 03-0892-0100  
 Drawn:

7401 West 129th Street, Suite 110  
 Overland Park, Kansas 66213  
 Phone: 913-239-1100  
 Toll Free: 877-527-5488  
 Fax: 913-239-1111  
 www.affinis.us



CITY OF OVERLAND PARK, KS  
 2003 PRELIMINARY ENGINEERING STUDY  
 METCALF AVENUE CROSS SECTIONS