

## REQUIREMENTS FOR RESIDENTIAL OR COMMERCIAL DRIVEWAY APPROACHES WITHIN CITY RIGHT-OF-WAY

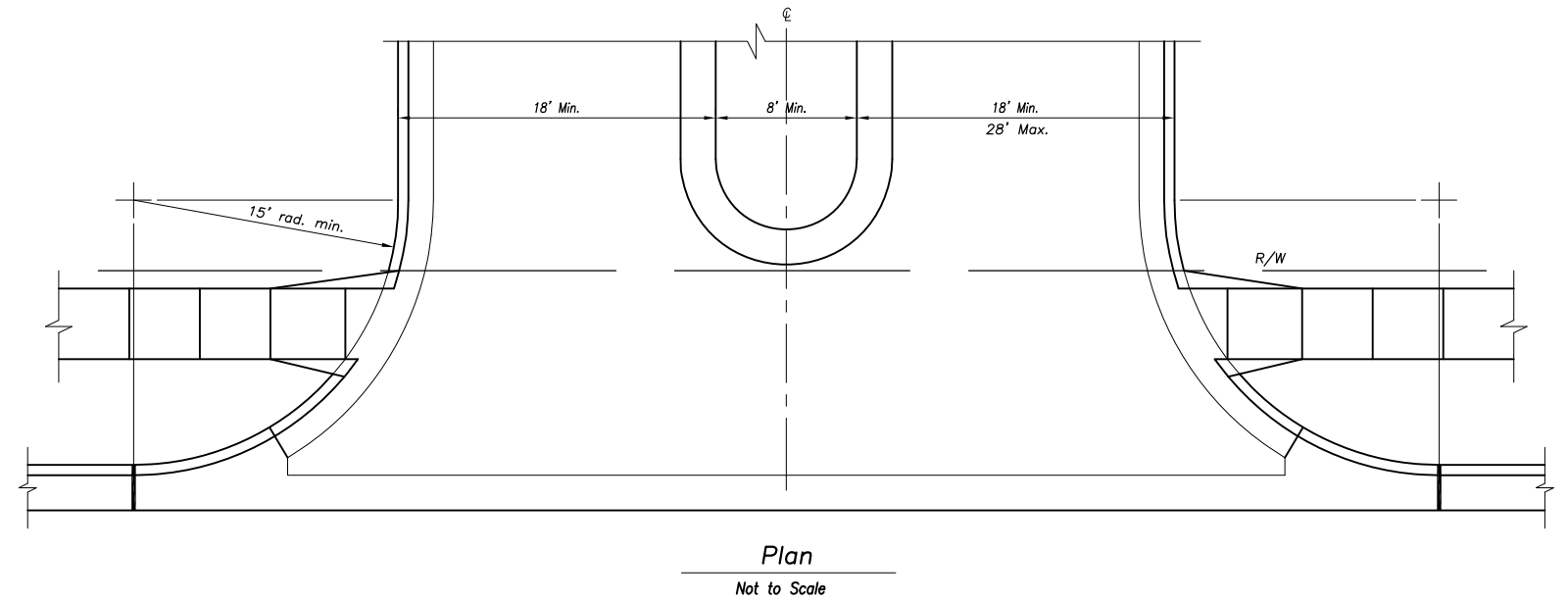
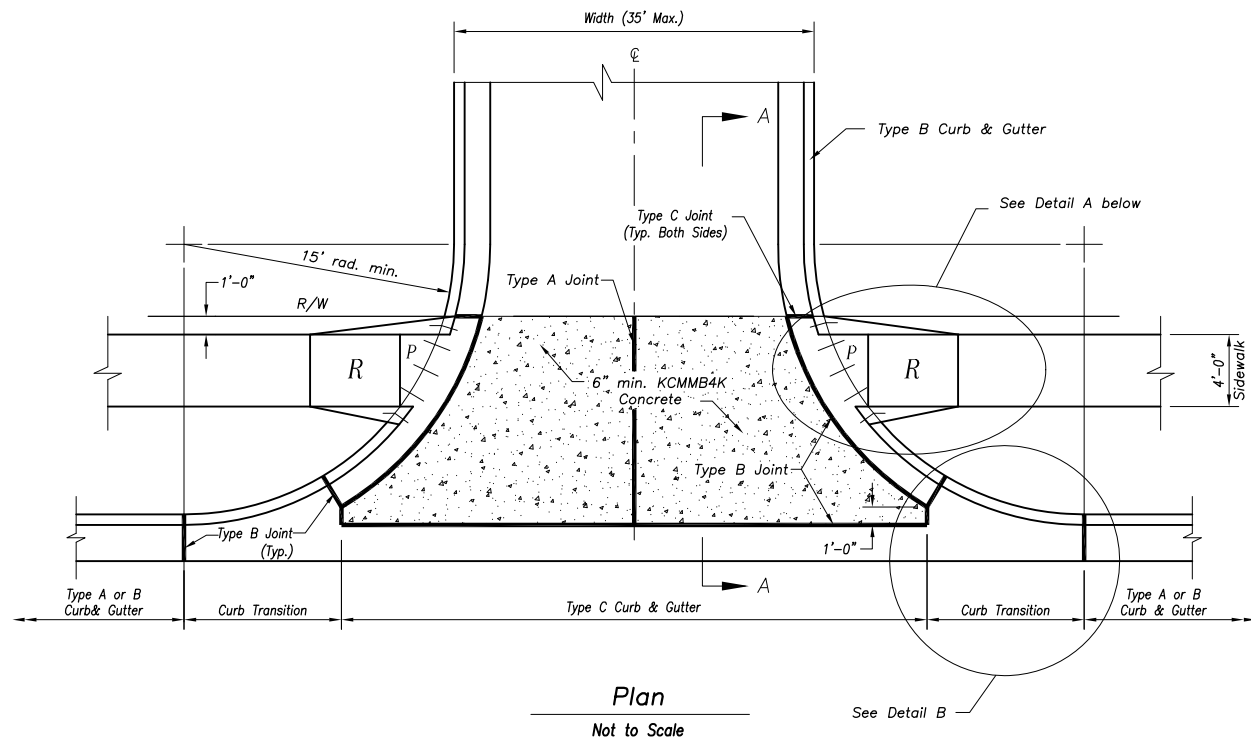
- Construction/demolition activities being performed in the Right-of-Way prior to obtaining a permit will be assessed a double permit fee.
- Prior to excavation, you **must** obtain utility locates before an inspection will be performed. Utility locates are listed below, as well as on the Right-of-Way application and permit. The telephone numbers are –

<b>Dig-Safe</b>	<b>811 or 1-800-344-7233</b>
<b>Overland Park Traffic Services</b> <i>(Streetlights and Signals)</i>	<b>913-327-6600</b>
<b>Water District #1</b>	<b>913-895-1806</b>

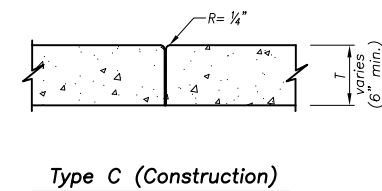
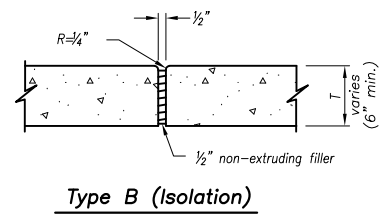
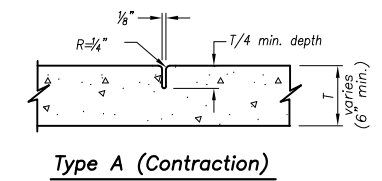
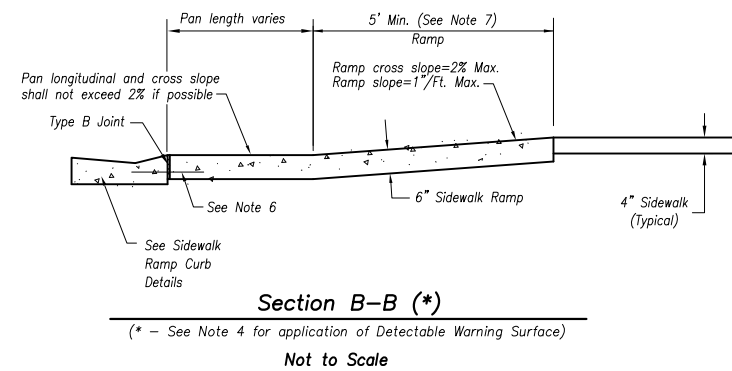
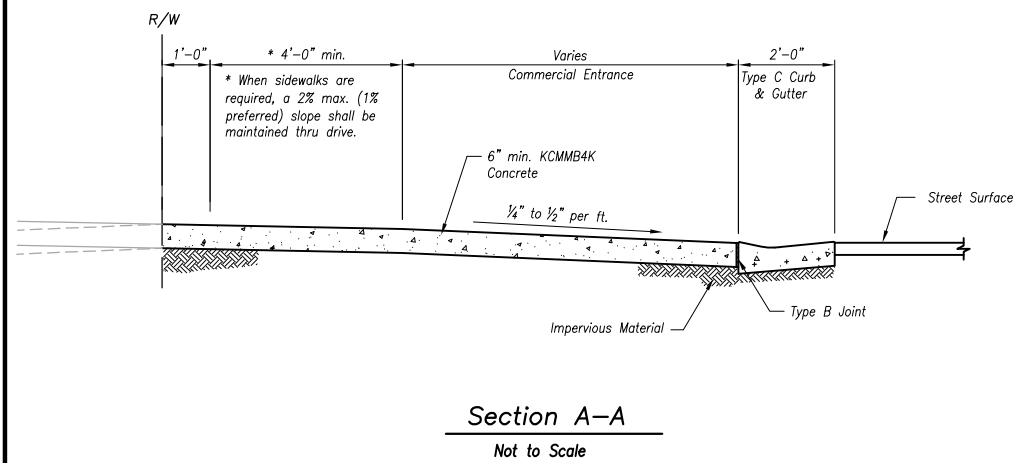
- You must use minimum 4000 lb KCMMB (Kansas City Metropolitan Materials Board) approved concrete mix in the approach. A copy of the delivery ticket must be sent to the Right-of-Way management via mail or fax, which are listed below:

<b>MAIL TO:</b> City of Overland Park Attn: Right-of-Way Manager Public Works Department 8500 Santa Fe Drive Overland Park, KS 66212	<b>FAX TO:</b> 913-890-1055
---	-----------------------------

- Approach must be 2' off property line, except for wings.
- Total concrete area not to exceed 35% of front yard, not counting Right-of-Way area.
- Driveway not to exceed 35' width at curb.
- Rebar or wire is not required in the approach, but is not prohibited. If rebar is used, do not tie into curb, driveway or sidewalk.
- Sub grade must be compacted.
- Sidewalk, on either side of driveway, must be the same elevation as driveway to avoid a trip hazard. You may be required to replace sidewalk.
- Concrete must be tool jointed and not saw jointed.
- Must use 6" expansion at curb and sidewalk.
- Do not install joints which would define a sidewalk. (No transverse joints in approach section).
- Install 3' x 6' wings when possible.
- Must have 6" depth from back of curb to 10' (Right-of-Way line) behind curb.
- Must schedule a forms inspection 24 hours in advance - call **913-895-5184**.



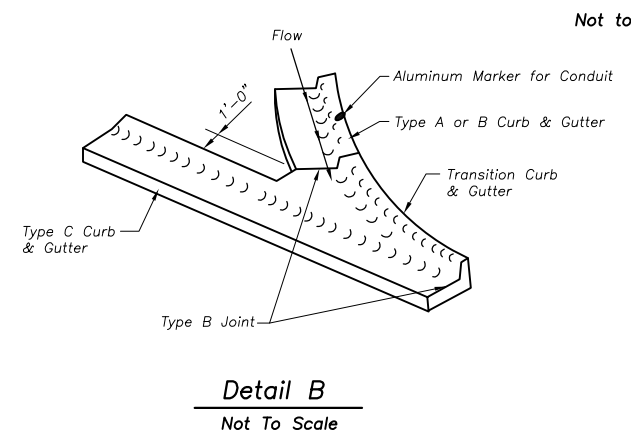
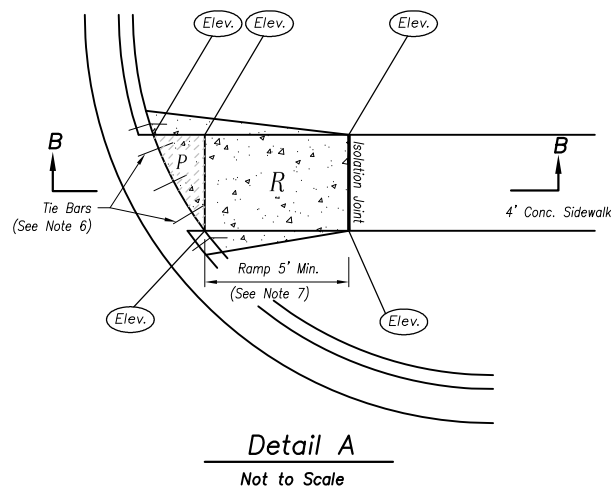
**COMMERCIAL ENTRANCE WITH MEDIAN**



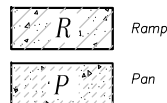
**JOINT DETAILS**  
Not to Scale

**Commercial Drive Notes:**

- Overland Park Municipal Code (OPMC) and Overland Park Design and Construction Standards Manual (OPDCSM) are incorporated, except as otherwise noted.
- KCMMB4K Concrete shall be used throughout.
- Concrete pavement shall be jointed with Type A joints. No jointed slab shall exceed 12' x 12'.
- Detectable warning surfaces are not allowed at non-signalized entrances. For signalized entrances use Type A ramp as shown on "Sidewalk and Sidewalk Ramp Details".
- ADA compliance will be measured at points labeled (Elev.).
- Install 18" tie bars #4 epoxy coated @ 18" o.c. and through wings as shown.
- Sidewalk Ramp shall be lengthened to provide ADA compliance slope but need not exceed 15'.
- ADA maximum ramp slope = 1"/ft. ADA maximum cross slope = 2%.
- Top of curb elevations shall be shown at quarter points and curb returns.
- Any additional steel reinforcement shall be approved by the City Engineer.
- See Curb Replacement Detail for additional requirements.



**Legend:**



**COMMERCIAL ENTRANCE DETAIL**

(2011 Edition)

DRAWING NAME: K:\Details\_Specs\Detail\_Drawings\details\_english\revision\_11\drive-c.dwg  
WEB SITE ADDRESS: <http://www.opkansas.org/Doing-Business/Standard-and-Construction-Detailed-Drawings>

REVISIONS:	
07/01/03	Concrete Mix Designation;
Jan. 2005	ADA Compliance;
Feb. 2008	Miscellaneous;
Jan. 2009	Joint Locations; Miscellaneous;
RELATED ORDINANCES:	
OPMC Title 13	



DEPARTMENT OF PUBLIC WORKS  
STANDARD DETAILS

**COMMERCIAL DRIVE DETAIL**

Year 2011 Edition