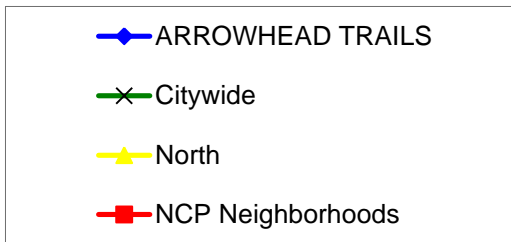
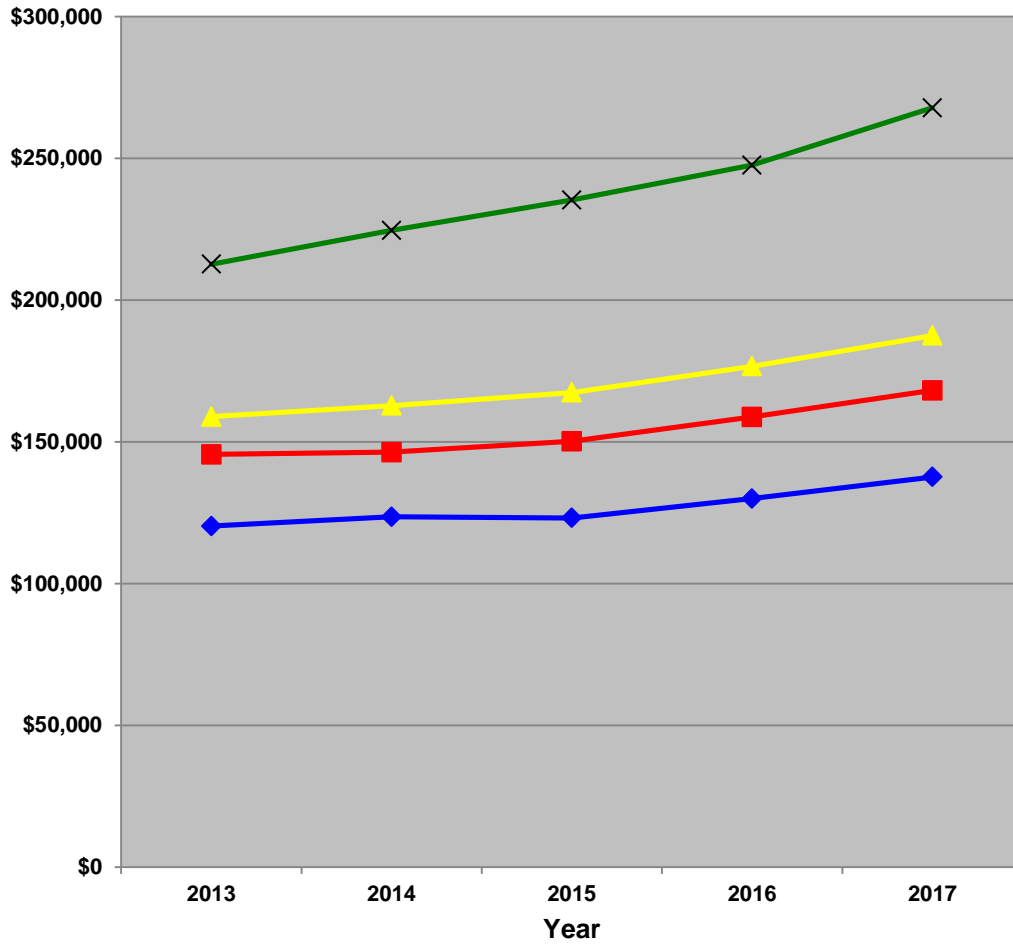
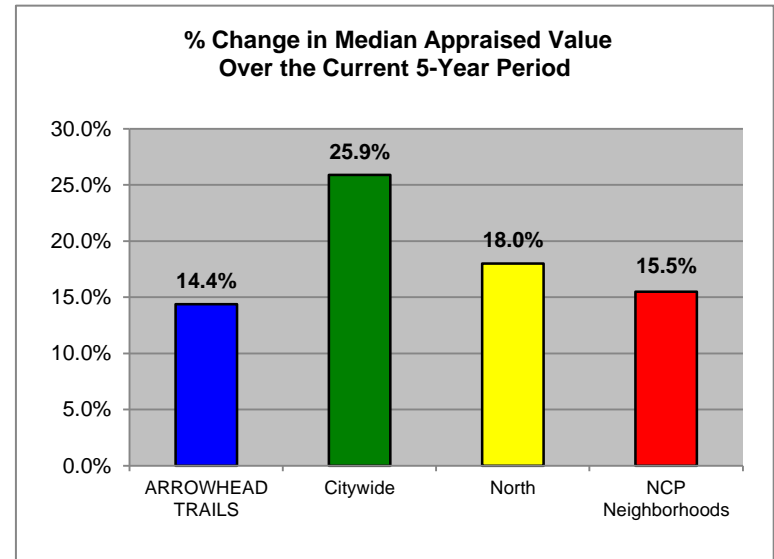


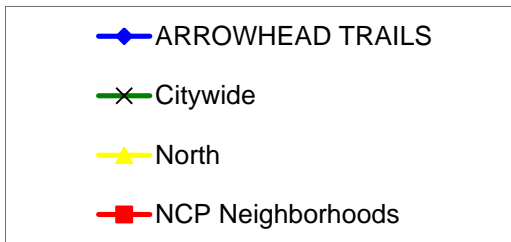
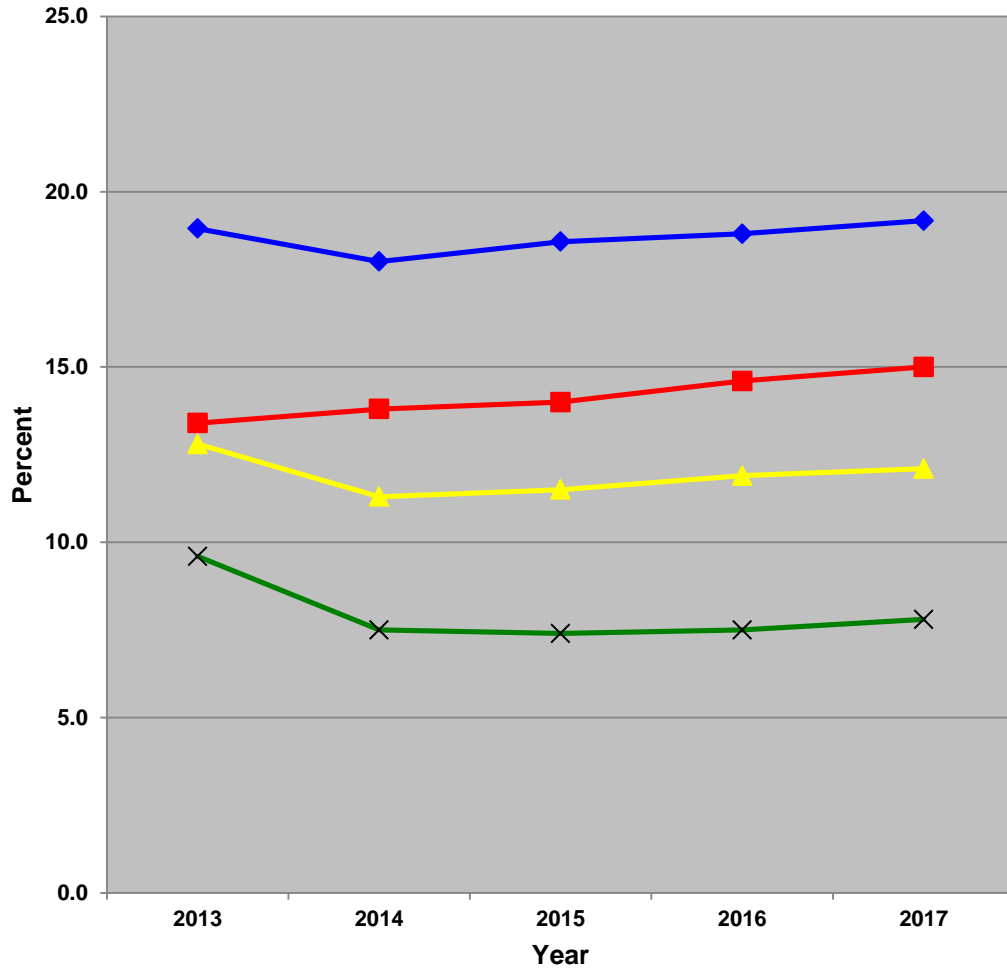
Median Appraised Value for all Single-Family Homes



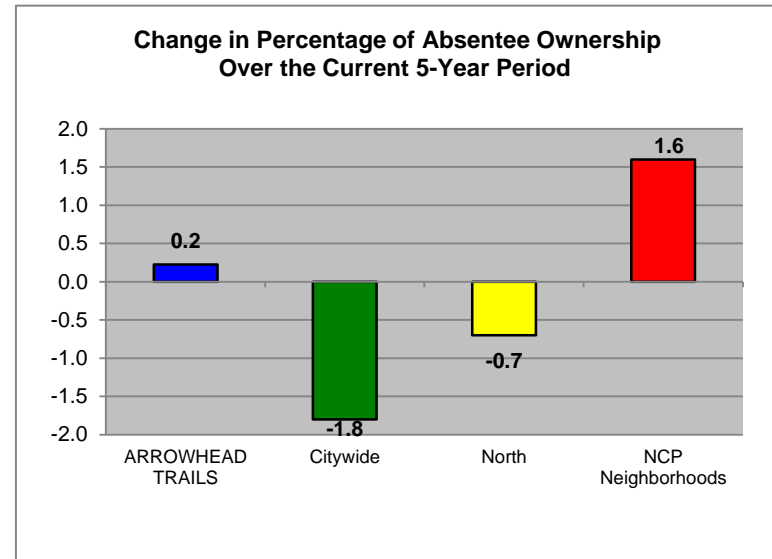
ARROWHEAD TRAILS



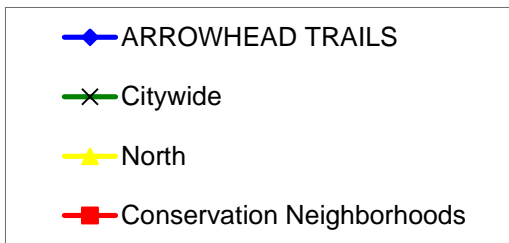
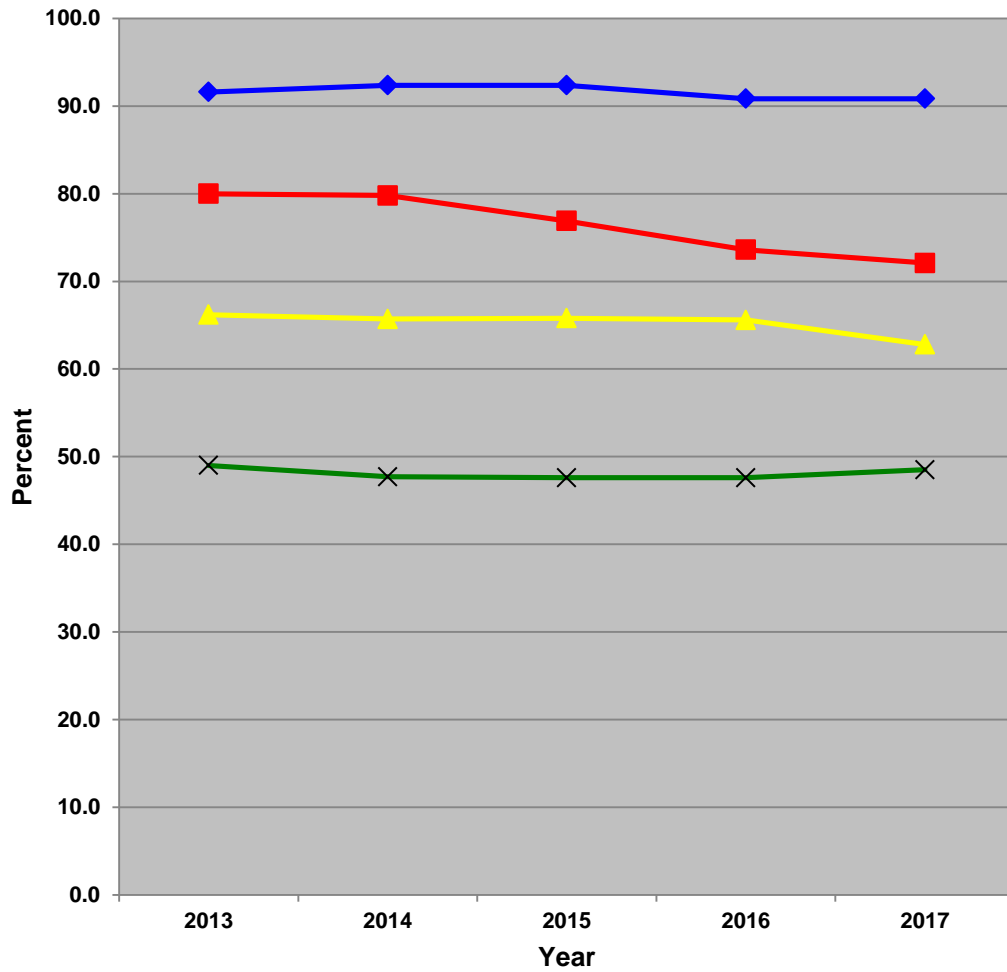
Percentage of Single-Family Homes with Absentee Ownership



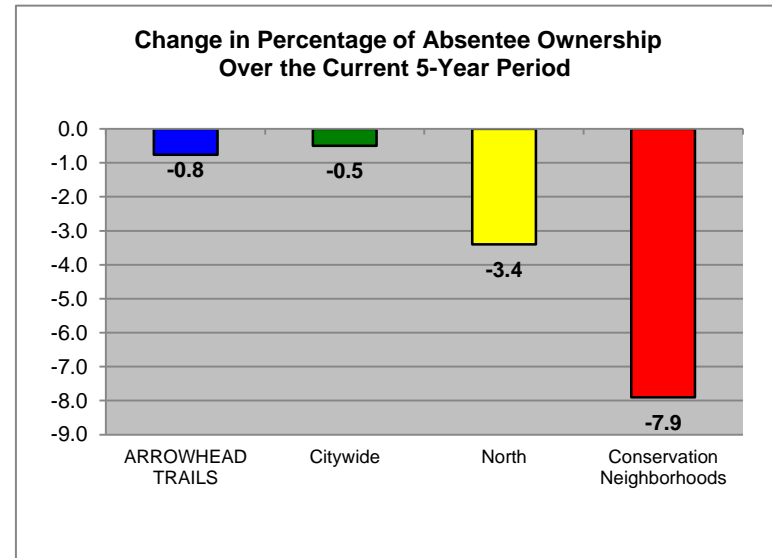
ARROWHEAD TRAILS



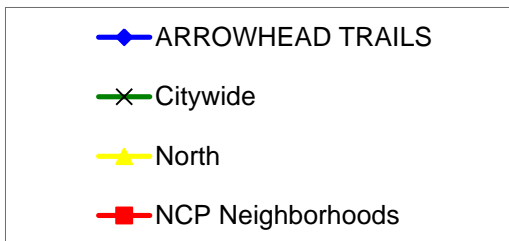
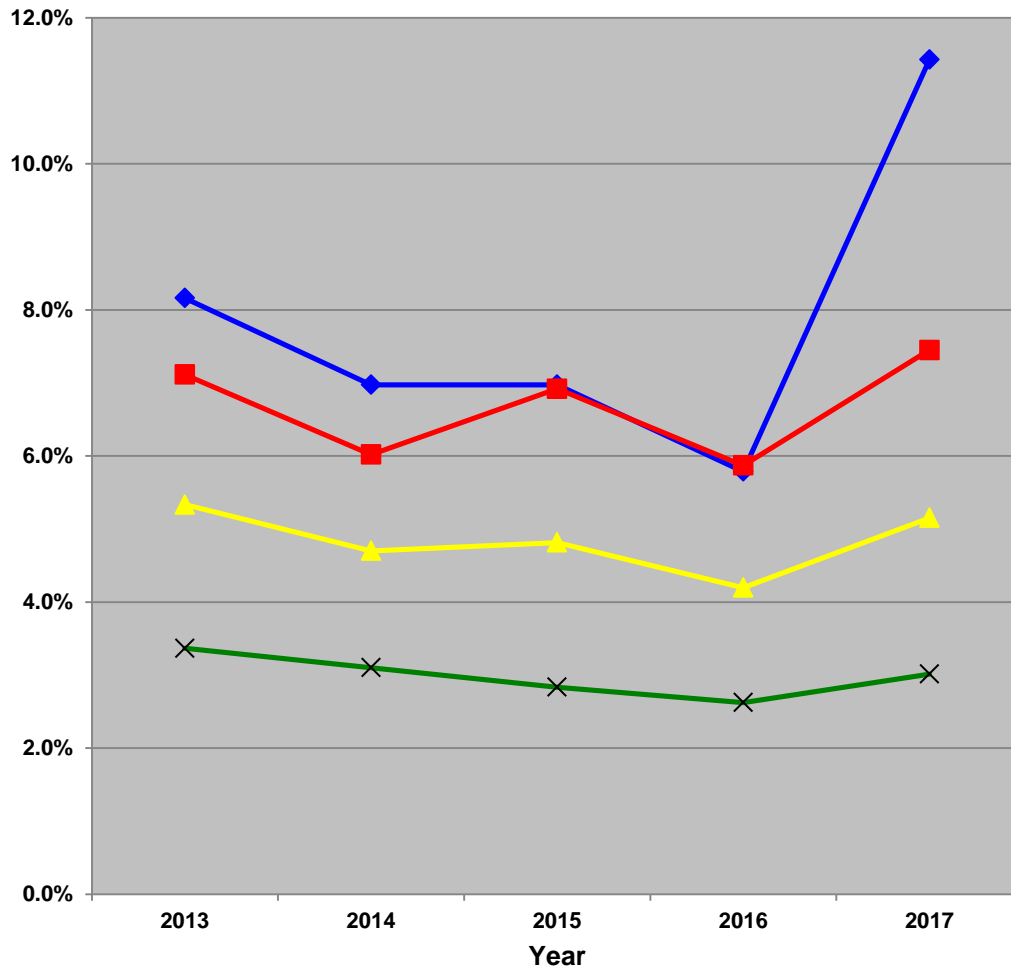
Percentage of Duplexes with Absentee Ownership



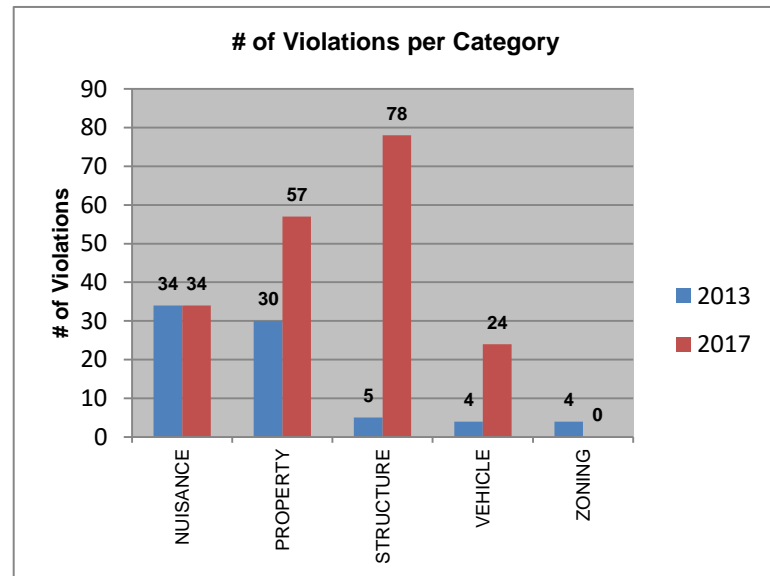
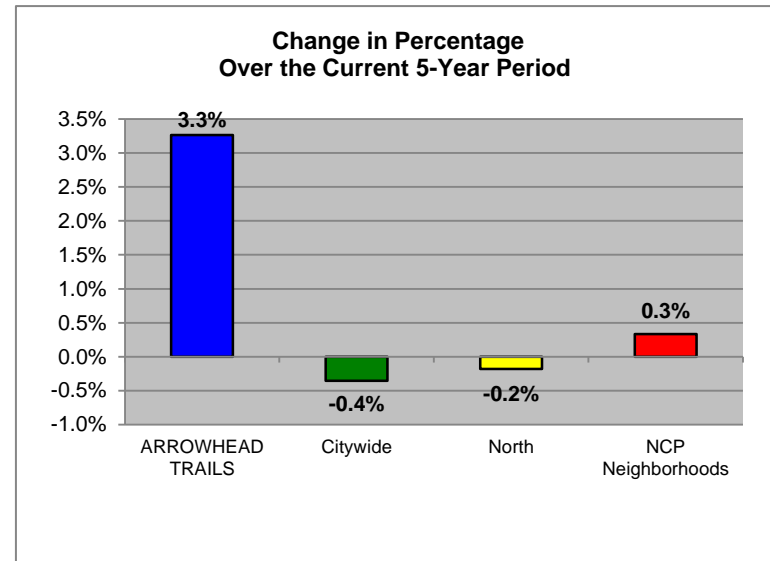
ARROWHEAD TRAILS



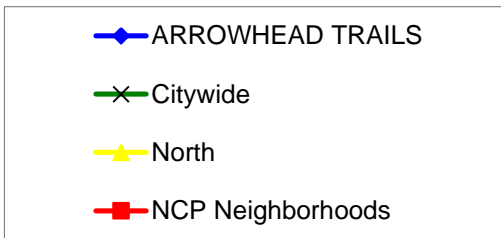
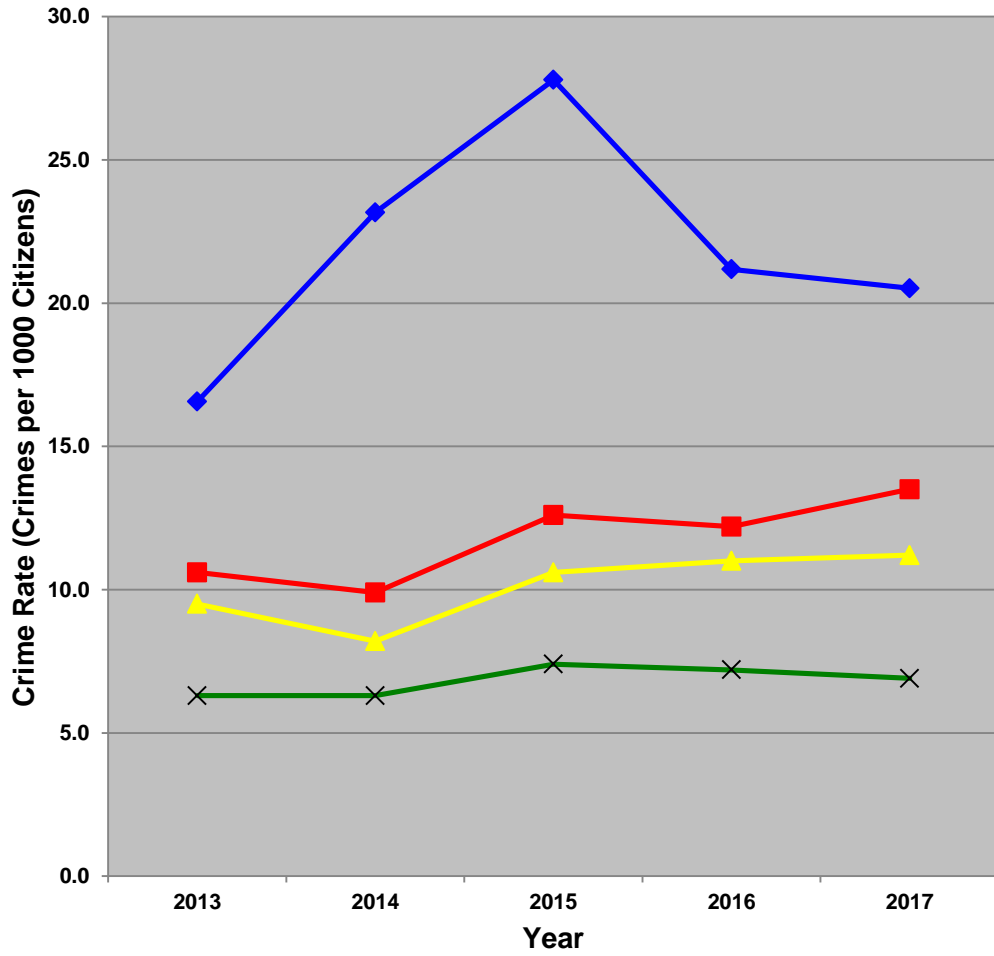
Percentage of Residential Units with Property Maintenance Violations



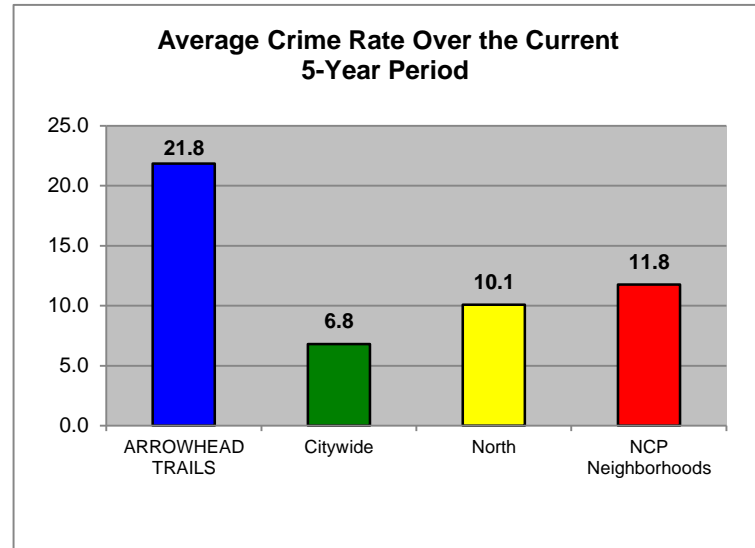
ARROWHEAD TRAILS



Single-Family & Duplex Part One Crime Rate



ARROWHEAD TRAILS



Multifamily Part One Crime Rate

ARROWHEAD TRAILS

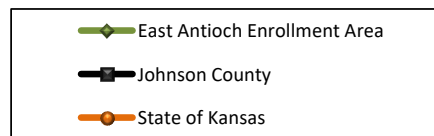
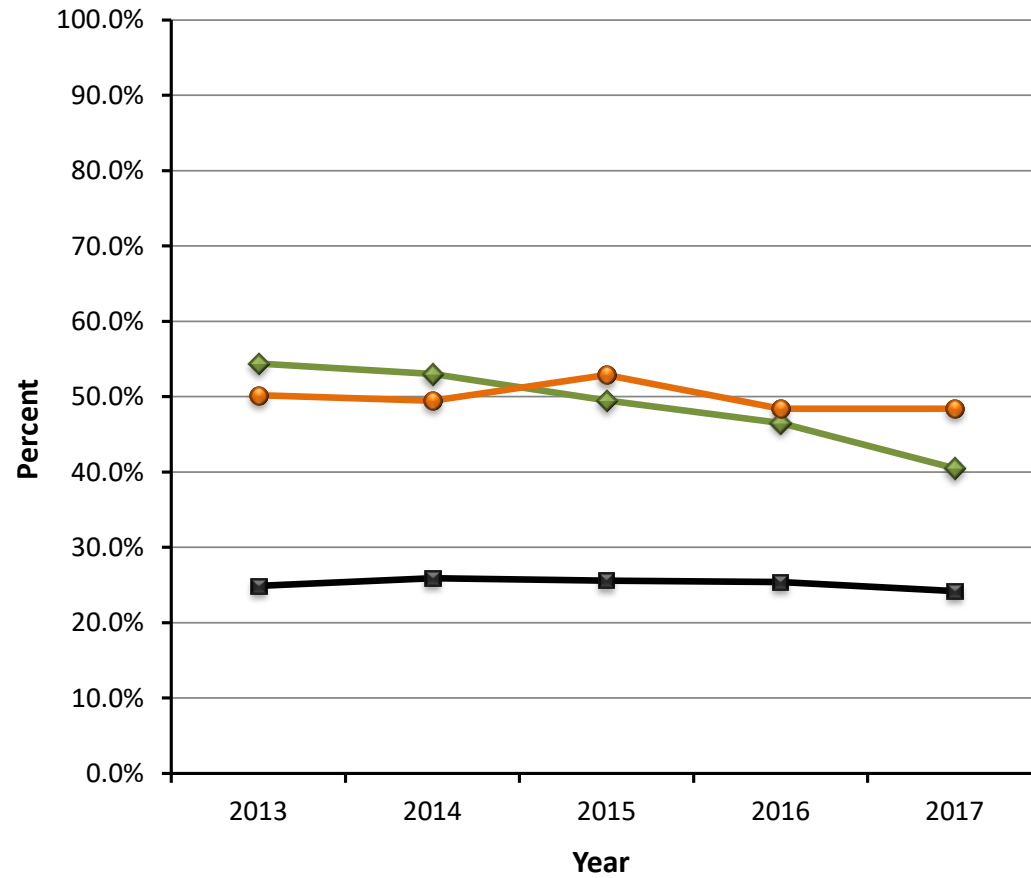
Note: There are no multifamily developments or no crimes occurred within this neighborhood group.

East Antioch Elementary Enrollment Area

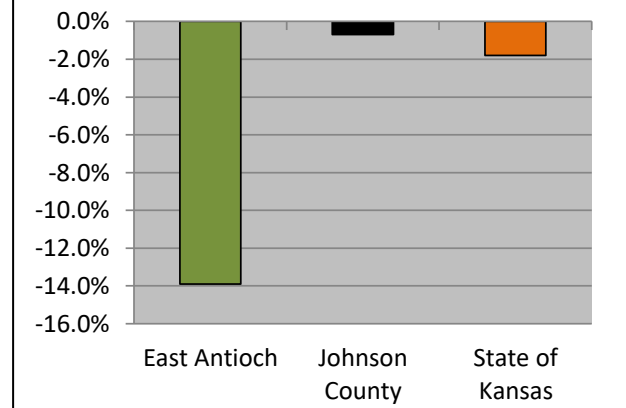
(Associated NCP Neighborhoods)

- *Area 14
- *Arrowhead Trails
- *Milburn
- *Strang Line
- *Young's Park
- *Milburn Fields

Percent of Elementary School Enrollment Eligible for School Lunch Program



% Change in Eligibility Over the Current 5-Year Period



NOTE: The National School Lunch Program, a long-standing federal program, provides free and reduced cost lunches to children from low and moderate income households.