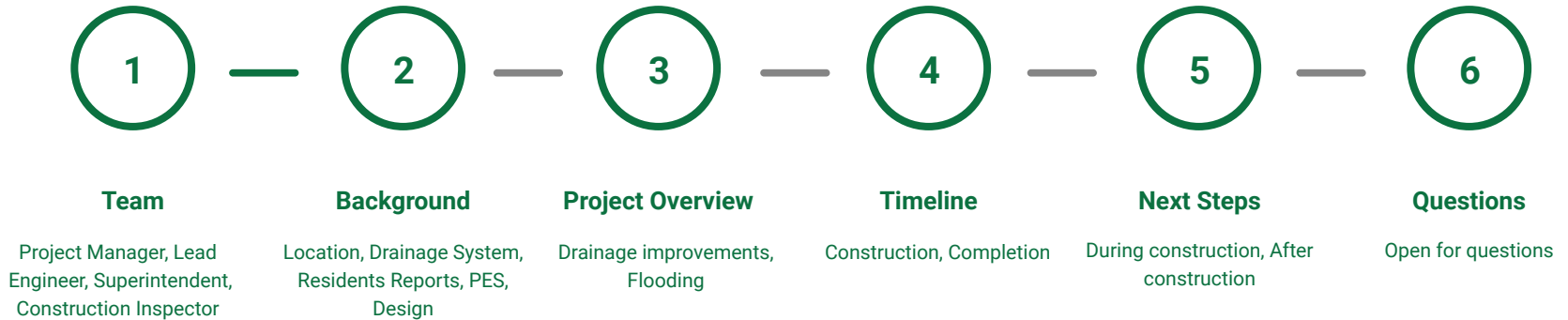


170th & Switzer Storm Drainage Improvements

Public Meeting
April 14, 2021

OVERLAND PARK
K A N S A S

Agenda



Team

Arij Humeida
Project Manager

Gary Urkevich
Design Engineer

Matt Gripka
Project Manager

Gary Neumann
Superintendent

Travis Sanders
Construction Inspector

City of Overland Park

913-895-6009

arij.humeida@opkansas.org

SK DESIGN GROUP, INC.

913-451-1818

gurkevich@skdg.com

Kansas Heavy Construction

913-845-2121

matt.gripka@kshvycon

913-909-8302

tsanders@affinis.us

Affinis

913-909-8302

tsanders@affinis.us

Background

1 Location

- Along 170th Terrace and west of Switzer

2 Drainage System

- Open Swales
- Roadside ditches
- Two Culverts

3 Residents Reports

- Excessive Flow
- Street overtopping
- Structure flooding

4 PES

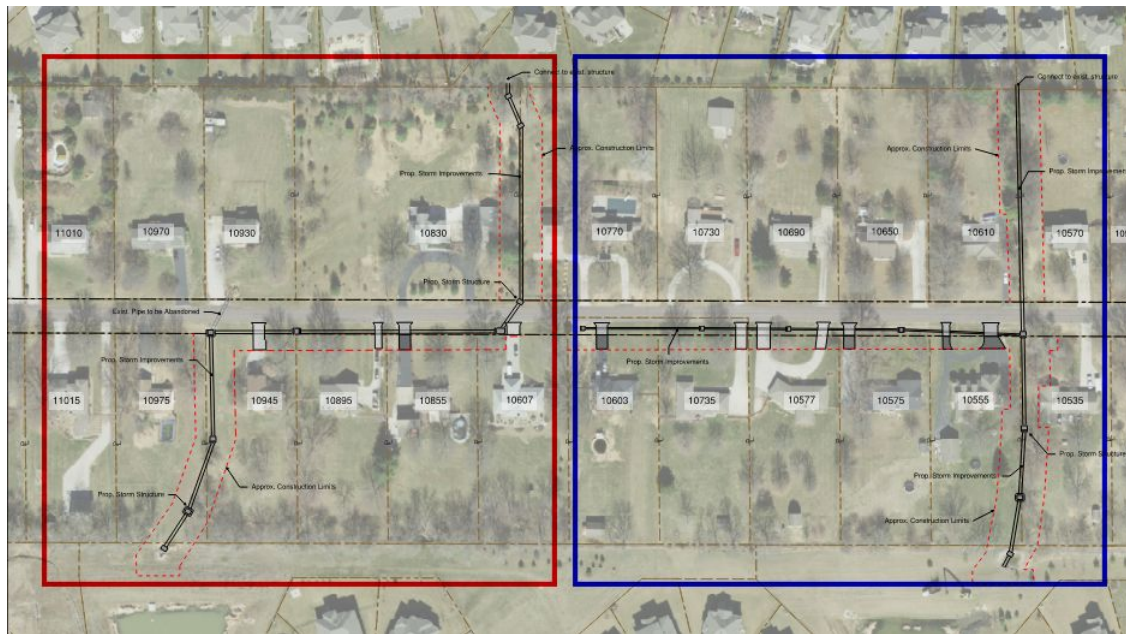
- Preliminary Engineering Study in 2018
- Finding and recommendation
- Johnson County Stormwater Management Program

5 Design

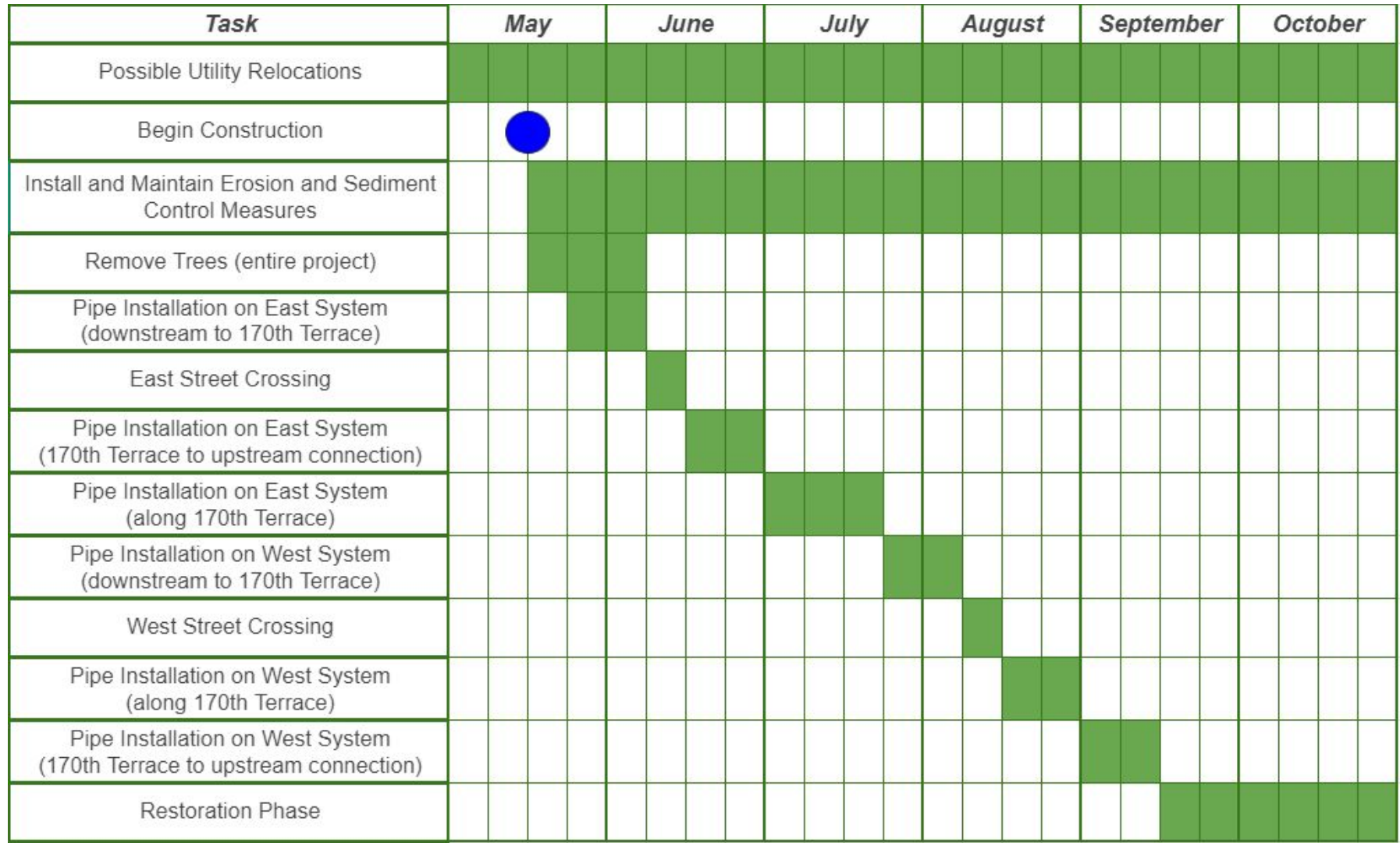
- Completed

Project Overview

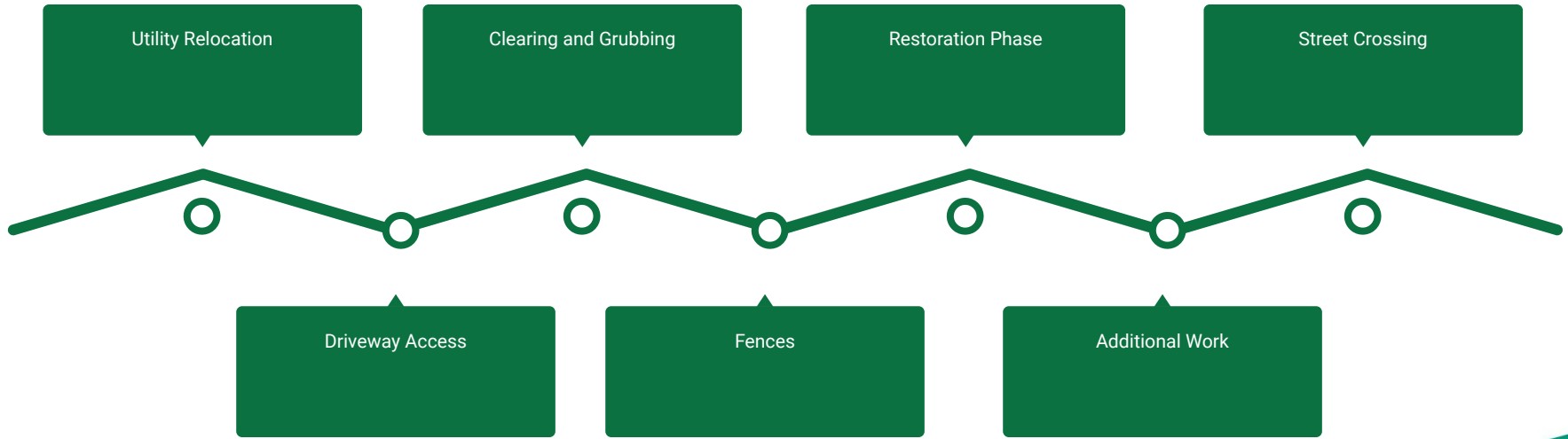
- To convey stormwater runoff from the detention basins to the existing area downstream
- Installing 1,900 linear feet of two enclosed pipe and inlet systems
- Two systems
 - **West Crossing**
 - **East Crossing**



Schedule



Next Steps



Questions

OVERLAND PARK
K A N S A S