

INTEGRAL SIDEWALK AND RETAINING WALL WITH UNDERDRAIN

Not to Scale
(2009 Edition)

Integral Sidewalk and Retaining Wall Notes:

General:

1. Rock backfill and topsoil placement shall be considered subsidiary to integral sidewalk and retaining wall construction.
2. Do not scale these drawings for dimensions or clearances. Any questions regarding dimensions shall be brought to the attention of the City Engineer prior to construction.
3. See planview for underdrain or weephole locations.

Concrete:

4. Concrete used in this work shall be KCMMB4K, as approved by the Kansas City Metropolitan Materials Board, and shall meet the requirements of the Overland Park Municipal Code.
5. All concrete construction shall meet the applicable requirements of Standard Specifications for State Road and Bridge Construction, Kansas Department of Transportation, latest edition.
6. All exposed wall faces shall be hand finished with an approved grout while the wall is green. Form marks shall be removed prior to finishing wall.
7. All form ties shall be recessed type.

Joints:

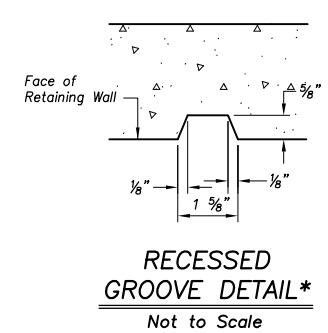
- 8.* All vertical form expansion and construction joints must fall in recessed groove. Recessed grooves shall align with contraction joints in sidewalk.
- 9.** Joint spacing 8'-0" center to center.
- 10.*** Where walk abuts junction of existing walk, concrete curbs, driveways, and similar structures, and 100' centers maximum.
11. Key all construction joints.
12. Sidewalk and retaining wall expansion joints shall have 5/8" smooth dowel assemblies with greased caps @ 12" ctrs. max.

Reinforcing Steel:

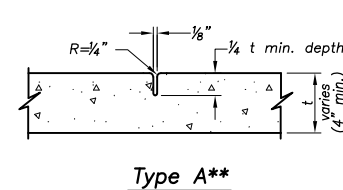
13. Reinforcing steel shall be new billet, minimum Grade 40 as per ASTM A615, and shall be bent cold.
14. All dimensions relative to reinforcing steel are to centerline of bars. 2" clearance shall be provided throughout unless noted otherwise. Tolerance of +/- 1/8" shall be permitted.
15. All lap splices not shown shall be a minimum of 40 bar diameters in length.
16. All dowels shall be accurately placed and securely tied in place prior to placement of bottom slab concrete. Sticking of dowels into fresh or partially hardened concrete will not be acceptable.
17. All reinforcing steel shall be supported on fabricated steel bar supports @ 3'-0" maximum spacing.

Underdrain Construction:

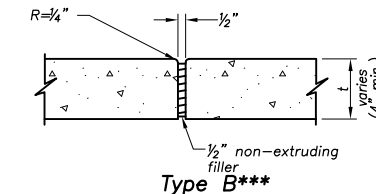
18. Stop underdrain at ends of sidewalk / RW.
19. Proposed underdrain pipe layout, flowline elevations, inlet connection points, and details shall be approved prior to construction. The Contractor shall submit shop drawings and material tests as required for approval by the City Engineer.
20. All underdrain outlet pipes shall be Type G with watertight joints. All outlet pipes shall be tied into the nearest storm sewer inlet as approved.
21. All underdrain pipes, Type F and Type G, shall be installed at a minimum slope of 1%.
22. All filter fabric used for pipe underdrain construction shall meet the requirements of AASHTO M288 Class A or approved equal.



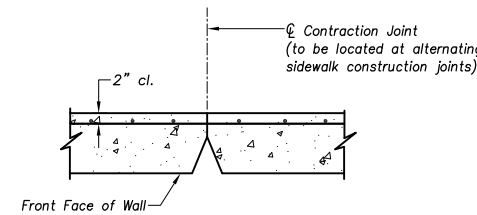
RECESSED GROOVE DETAIL*
Not to Scale



Type A**

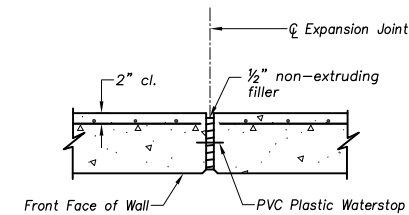


Type B***



Vertical Contraction Joint Detail

Note: Preformed Contraction Joints as approved by the City Engineer shall be used

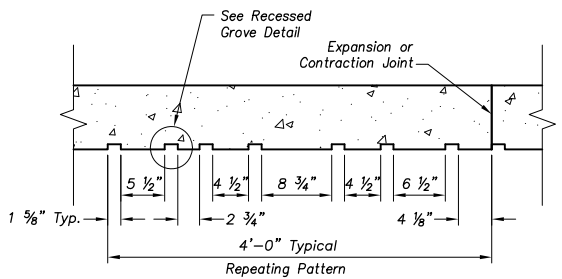


Vertical Expansion Joint Detail

Note: Vertical Expansion Joints required every 100'

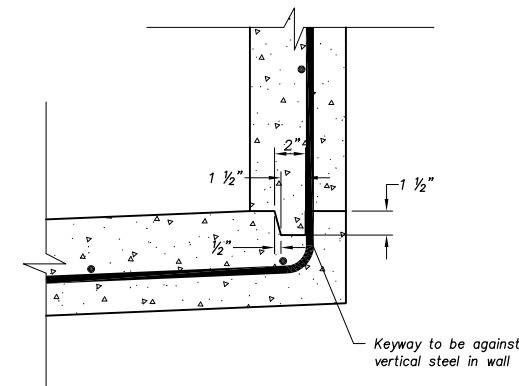
JOINT DETAILS

Not to Scale



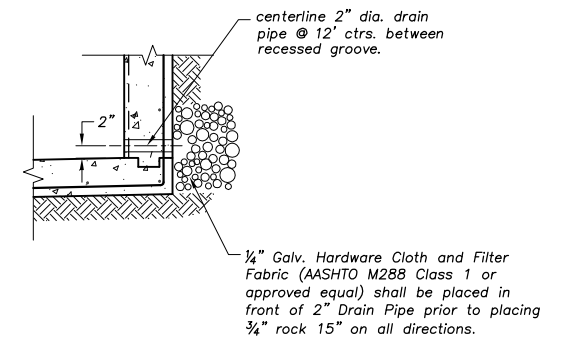
REPEATING PATTERN DETAIL

Not to Scale



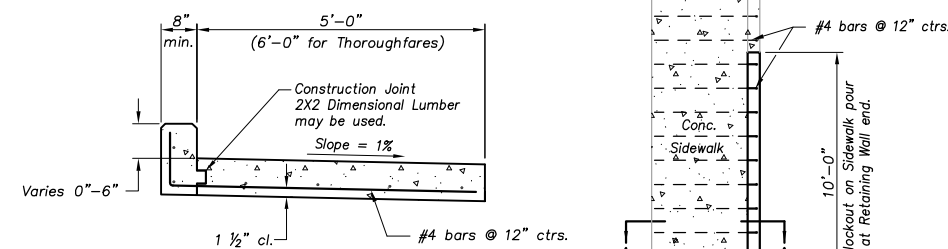
CONSTRUCTION JOINT DETAIL

Not to Scale



WEEPHOLE DETAIL

Not to Scale



Section A-A

END OF SIDEWALK RETAINING WALL BLOCKOUT DETAIL

Not to Scale

INTEGRAL SIDEWALK AND RETAINING WALL				
STA. TO STA.	SIDE	LOCATION	HEIGHT FEET	LENGTH LIN. FEET
TOTAL:				

REVISIONS:	NOTES:
02/15/00	05/10/01
05/20/03	07/01/03
RELATED ORDINANCES:	OPMC Title 13
WEB SITE ADDRESS:	http://www.opkansas.org/_bus/pre-construction_resources

Year 2009 Edition

CITY OF OVERLAND PARK
DEPARTMENT OF PUBLIC WORKS

STANDARD DETAILS

INTEGRAL SIDEWALK AND RETAINING WALL DETAIL

DATE: 09/28/09 SHEET: 21