

CITY OF OVERLAND PARK

2006-2010

CAPITAL IMPROVEMENTS PROGRAM

Adopted
August 15, 2005



2006 - 2010
CAPITAL IMPROVEMENTS PROGRAM
Adopted August 15, 2005

GOVERNING BODY

MAYOR

Carl Gerlach

COUNCIL PRESIDENT

George Kandt

CITY COUNCIL

Marcia A. Gilliland
Terry Goodman
Terry Happer Scheier
Jim Hix
Dave Janson
Donna Owens
Curt Skoog
Fred Spears
Dan Stock
John H. Thompson
David White

PLANNING COMMISSION

CHAIRMAN

Edward J. Reitzes

VICE CHAIRMAN

David M. Hill

COMMISSION

Richard W. Collins
Charles W. Hunter
Thomas O. Lance
George Lund
Tex L. New
Kim Sorensen
John Skubal
Janie Thacker

CITY MANAGER

John Nachbar

DIRECTOR OF PLANNING AND DEVELOPMENT SERVICES

Roger W. Peterson

DIRECTOR OF FINANCE, BUDGET AND ADMINISTRATION

Kristy Stallings

DIRECTOR OF PARKS AND RECREATION

James D. Cox

DIRECTOR OF PUBLIC WORKS

Doug Brown

CITY ATTORNEY

Robert J. Watson

CHIEF OF POLICE

John M. Douglass

DIRECTOR OF HUMAN RESOURCES

Robert L. Jones

DIRECTOR OF FIRE SERVICES

Bryan Dehner

TABLE OF CONTENTS

Capital Improvements Program Goal and Objectives	7.4
Financial Planning Standards Used in Capital Plan Development.....	7.5
Financial Assumptions Used in Capital Plan Development	7.7
Policy for Making Changes in the CIP	7.11
Capital Projects Expenditures by Category 1995-2004.....	7.12
2006-2010 CIP Project Costs by Category (Graph)	7.13
Mill Levy Rates Projection (Graph)	7.13
Annual Outstanding Debt Projection (Graph)	7.14
Percent of Debt and PAYG to Total City Funded Projects for each CIP (2000-2010)	7.14
Capital Improvements Projects with a 2006 Finance Year.....	7.15
Summary of Ratios	7.16
Summary by Category and Funding Source	7.18
Key to Project Categories	7.22
Key to Funding Sources.....	7.24
Project Details.....	7.26

CAPITAL IMPROVEMENTS PROGRAM GOAL & OBJECTIVES

CAPITAL IMPROVEMENTS PROGRAM GOAL

The goal of Overland Park's Capital Improvements Program (CIP) is to forecast future public improvements and facilities in the City and to provide data concerning need, cost, timing, funding sources, budget impacts and alternatives. The goal is pursued with the following objectives.

CAPITAL IMPROVEMENTS PROGRAM OBJECTIVES

1. Utilize the objectives of the Master Plan and the recommendations of the Goals for Overland Park Task Force when reviewing and updating the CIP program.
2. Integrate the CIP budget into the Operating Budget in order to provide a comprehensive financial plan for accomplishing the goals of Overland Park.
3. Execute the CIP budgetary process in a manner that will provide the Governing Body with an opportunity to respond to community needs.
4. Ensure that all decisions and actions will assist in maintaining the City's triple-A bond ratings.
5. Leverage City resources against available federal, state and county funds in such a manner that the present and future citizens of Overland Park will be provided with the highest level of services and facilities without adverse financial impacts in the future.
6. For improvement districts consisting of 100% special assessments, financing will comply with the 10-year debt retirement schedule as outlined in Resolution No. 2381. For all street and storm drainage projects with City funds involved, financing will be limited to a maximum debt retirement schedule of 10 years. For all other projects, the City will analyze financial and economic data in order to determine the most effective and cost efficient method of financing.

FINANCIAL PLANNING STANDARDS AND MEASURES USED IN CAPITAL PLAN DEVELOPMENT

Several financial standards and measures have been developed as a basis for evaluating the financial soundness of the five-year capital plan. These standards and measures, described below, serve as guidelines in scheduling and balancing the composite of financing methods for projects included in the plan.

FINANCIAL STANDARDS

PERCENTAGE OF ENDING CASH TO OPERATING EXPENDITURES

DESCRIPTION: The General Fund's unreserved undesignated fund balance divided by the General Fund's operating expenditures (excluding transfers). (Source of standard – staff.)

EXPLANATION: The City is currently reviewing the appropriate level of ending cash.

PERCENTAGE OF P.A.Y.G. TO CITY FUNDS

45% to 55%

DESCRIPTION: The amount of pay-as-you-go funding used to finance capital improvements projects divided by the total amount of the City funds financing the Capital Improvements Program (CIP). (Source of standard – staff.)

PERCENTAGE OF DEBT TO CITY FUNDS

45% to 55%

DESCRIPTION: The amount of the City's general obligation debt incurred to fund capital improvements projects divided by the total amount of the City funds used to finance capital improvements projects. (Source of standard – staff.)

TOTAL DIRECT DEBT PER CAPITA

\$675

DESCRIPTION: The amount of per capita direct-bonded debt (debt for which the City has pledged its full faith and credit) issued by the City. (Source of standard - Moody's Investors Service.)

PERCENTAGE OF DIRECT AND OVERLAPPING DEBT TO MARKET

VALUE OF TANGIBLE PROPERTY

4% to 5%

DESCRIPTION: The City's direct-bonded debt and overlapping debt as a percentage of estimated market valuation of property within the City. (Source of standard - Moody's Investors Service.)

PERCENTAGE OF DEBT SERVICE COST TO GENERAL FUND

OPERATING EXPENDITURES

Less than 25%

DESCRIPTION: The City's annual payments to the Bond & Interest Fund for debt service cost divided by total operating expenditures (excluding transfers) of the General Fund. (Source of standard - I.C.M.A.)

MILL LEVY EQUIVALENT OF B & I TRANSFER

4 Mills

DESCRIPTION: The mill levy required to replace the General Fund's annual transfer to the Bond & Interest Fund. These monies are used to pay annual principal and interest payments on the City's maturing general obligation debt. (Source of standard – staff.)

PERCENTAGE OF OPERATING BUDGET TO CITY FUNDING OF THE CIP

45% to 55%

DESCRIPTION: The current General Fund Operating Budget divided by the total City funds financing the five-year CIP and the General Fund Operating Budget. (Source of standard – staff.)

PERCENTAGE OF CITY FUNDS FINANCING THE CIP TO THE OPERATING BUDGET

45% to 55%

DESCRIPTION: The amount of City funds used to finance the five-year CIP divided by the current General Fund Operating Budget and the total City funds financing the CIP. (Source of standard – staff.)

FINANCIAL MEASURES

PERCENTAGE OF OPERATING EXPENDITURES TO CURRENT GENERAL FUND REVENUES

85%

DESCRIPTION: The amount of the projected General Fund operating expenditures divided by the projected current General Fund revenues. (Source of standard – staff.)

PERCENTAGE OF MAINTENANCE EXPENDITURES TO CURRENT GENERAL FUND REVENUES

2%

DESCRIPTION: The amount of projected infrastructure and facility maintenance expenditures divided by the projected current General Fund revenues. (Source of standard – staff.)

PERCENTAGE OF CAPITAL EXPENDITURES TO CURRENT GENERAL FUND REVENUES

13%

DESCRIPTION: The amount of City funds used to finance the five-year CIP divided by the projected current General Fund revenues. (Source of standard – staff.)

FINANCIAL ASSUMPTIONS USED IN CAPITAL PLAN DEVELOPMENT

REVENUE ASSUMPTIONS

GENERAL FUND

1. Assessed Valuation increase for 2006 is projected 3.9% over the 2005 base of \$2,417,276,913. For each year of the remainder of the plan new construction is expected to grow by 3% over the previous year's new growth and reappraisal of existing properties is expected to grow by 2.7% over the prior year's assessed valuation.
2. General Fund Property Taxes are based on the assessed valuation. The annual property tax rate of 3.313 mills is held constant. The property tax rate is applied against total assessed valuation growth.
3. City 1¢ Sales Tax revenue growth is projected using the most current quarterly forecast of sales tax. The forecast of sales tax is based on historical data and is derived from the use of two different statistical models, regression and Box-Jenkins. Sales tax collections by business category are analyzed, and external events (proposed legislation and competing retail development), which cannot be measured by the models, are considered when quantifiable.
4. The City's share of the County 1/2¢ Sales Tax revenue is estimated to be 27.4% of total county sales. Annual growth is projected using the same percentage growth rates as the City's 1¢ sales tax.
5. County 1/4¢ Public Safety Sales Tax revenue is distributed to cities under a different formula than the 1/2¢ countywide sales tax. The City's share of the County 1/4¢ Public Safety Sales Tax is estimated to be 6.8% of total city sales. The growth during the five-year planning period is projected using the same percentage growth rates as the City's 1¢ sales tax.
6. City 1/8¢ Sales Tax is projected using the most current quarterly forecast of sales tax. Overland Park voters originally approved this tax in November of 1998, with a five-year extension approved by voters in April of 2003. Collections began in April of 1999 and will continue through March of 2009.
7. Motor Vehicle Tax revenue is estimated based on motor vehicle assessment rates. Motor Vehicle Tax revenues are forecasted to increase by 4% in 2006 and in each year for the remainder of the plan.
8. No growth in Franchise Tax is projected based on the rate of collections in 2004 and estimated for 2005. Changes in the telecommunications franchisees, limited growth in this area and uncertainty regarding the future of taxation on telecom services is the basis for maintaining franchise taxes for the period at current collection levels.

9. Municipal Court revenues assume no growth, and collections remain constant at the 2005 level.
10. Excise Tax revenue estimates for 2006-2010 are consistent with 2004 development levels, rather than being based on historical data. Revenues generated from excise tax are not expected to return to the high levels experienced in the late 1990s due to a change in the real estate market within the City. In the past, development has been a mixture of mid-range and high-end housing. However, due to higher land prices and less developable land, current development is almost exclusively high-end. This type of development does not occur quickly, thus less land is expected to be developed annually. The excise tax rate reflects the rates as currently adopted: 19¢. This rate is held constant throughout the 2006-2010 plan period.
11. All other revenues are projected to increase an average of 4% per year.

FIRE SERVICE FUND

1. Assessed Valuation increase for 2006 is projected at 3.9% over the 2005 base of \$2,417,276,913. For each year of the remainder of the plan new construction is expected to grow by 3% over the previous year's new growth and reappraisal of existing properties is expected to grow by 2.7% over the prior year's assessed valuation.
2. Fire Service Fund Property Taxes are based on the assessed valuation assumption. The annual property tax is held constant at the 2005 rate of 4.735 mills.
3. Ambulance fee revenues are projected for the five-year planning period based on estimated revenue for 2005 with an annual revenue increase of 2% per year.
4. A transfer from the General Fund is programmed when necessary to meet Fire Service Fund requirements. The General Fund subsidy of the Fire Service Fund is expected to continue throughout the planning period.
5. Motor Vehicle Tax revenue is estimated based on motor vehicle assessment rates multiplied by the future motor vehicle assessed valuation determined by Johnson County. Motor Vehicle Tax revenues are forecasted to increase by 4% in 2006 and in each year for the remainder of the plan.
6. Fire Training Facility Revenues from Sprint lease payments have been eliminated based on notification by Sprint that it is not planning to renew its lease after 2005. Rental revenue from the Fire Training Facility due to regional users of this facility has been estimated by the Overland Park Fire Department based on anticipated usage.
7. All other revenues are projected to increase an average of 4% per year.

EXPENDITURE ASSUMPTIONS

GENERAL FUND

1. Operating Budget.

A. 2005 Operating Expenditures will not exceed 95% of budget.

B. 2006-2010 Operating Expenditures.

(1) Operating budget planned growth factor is:

2006	4.00%
2007	4.00%
2008	4.00%
2009	4.00%
2010	4.00%

(2) There are no expanded level packages in years 2007-2010.

C. The annual General Fund Contingency is projected at \$3,290,000 in 2006, and will grow 4% annually during the remainder the plan.

2. Capital Improvements.

A. An annual adjustment of 2.5% is included in the five-year forecast for Capital Expenditures to account for construction inflation. This adjustment is applied only to the City-funded portion of the project.

B. Debt used to finance capital projects is programmed to be paid in accordance with a 10-year accelerated debt retirement schedule using interest rates in each year of the plan as follows:

2005	5.00%
2006	5.00%
2007	5.00%
2008	5.00%
2009	5.00%
2010	5.00%

C. Projects identified in the first year of the plan will be incorporated into the City's 2006 annual budget. Projects designated in the remaining years of the plan are included for planning purposes; however, funding is not guaranteed.

FIRE SERVICE FUND

1. Contracts with Overland Park Fire Department, Inc., and Johnson County Consolidated Fire District No. 2 are included in the expenditure assumption.

A. Operating budget planning growth factor is:

2005	4.00%
2006	4.00%
2007	4.00%
2008	4.00%
2009	4.00%
2010	4.00%

B. There are no expanded level packages in years 2007-2010.

2. Annual Contingency is projected at 1% of total Fire Service Fund operating expenditures and contractual obligations.
3. Equipment Reserve funding will reflect the amount needed to fund fire equipment over the five-year planning period.

POLICY FOR MAKING CHANGES IN THE CIP

Any substantial capital project added after adoption of the CIP will require an amendment and will affect cash flows, future CIP capability and mill levy projections.

1. If the capital improvement request is less than \$75,000, the amendment process is as follows:
 - a. Upon receipt of a capital improvement request, the request shall be forwarded to the appropriate goal area committee for consideration.
 - b. If the goal area committee decides to fund the request, the goal area committee will identify possible funding sources and/or possible project(s) to be substituted for the requested project.
 - c. The staff will incorporate the project amendment into the current CIP as directed by the goal area committee and inform the Governing Body of the goal area committee's action.

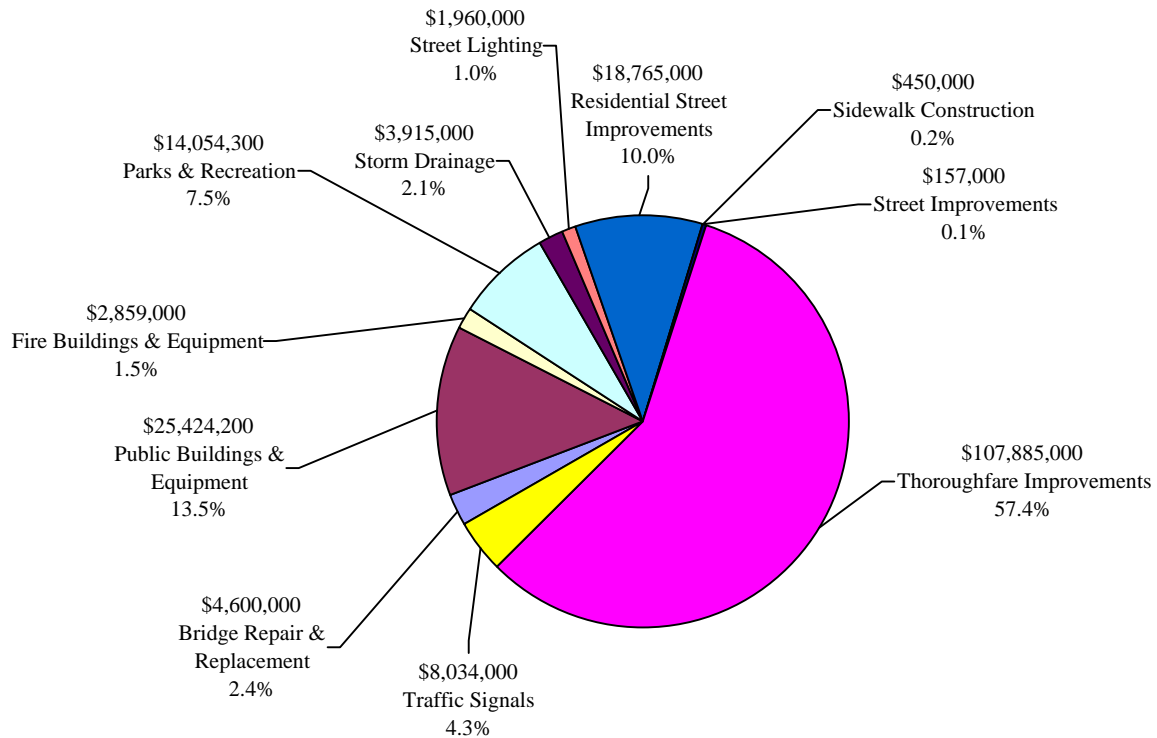
2. If the capital improvement request is \$75,000 or more, the amendment process is as follows:
 - a. Upon receipt of a capital improvement request, the request shall be forwarded to the appropriate goal area committee for consideration.
 - b. The goal area committee shall review the proposed project and determine whether or not to recommend the requested amendment. If recommended, the goal area committee will also identify a funding source (or sources) and/or projects to be substituted or rescheduled to accommodate the requested project. The goal area committee will report its recommendation to the Governing Body. Prior to consideration of this recommendation by the Governing Body, the goal area committee's recommendation will be forwarded to the Finance, Administration and Economic Development (FAED) Committee for review.
 - c. The FAED Committee will review the recommendation of the goal area committee and evaluate the impact the recommended project's inclusion in the CIP will have on the overall financial plan and established financial standards. FAED Committee will report this information and any comments regarding the goal area committee's recommendation to the Governing Body for final consideration.
 - d. The Governing Body will consider information regarding the proposed amendment and the recommendations from the goal area and FAED committees. If the requested amendment is approved by the Governing Body, the staff will incorporate the proposed changes into the current CIP.

CAPITAL PROJECT EXPENDITURES BY CATEGORY
1995 - 2004

	<u>Total 1995</u>	<u>Total 1996</u>	<u>Total 1997</u>	<u>Total 1998</u>	<u>Total 1999</u>	<u>Total 2000</u>	<u>Total 2001</u>	<u>Total 2002</u>	<u>Total 2003</u>	<u>Total 2004</u>	<u>Total All Years</u>	<u>% of Combined Total</u>
Downtown Improvements	\$ 11,336	\$ 0	\$ 5,500	\$ 225,949	\$ 0	\$ 16,420	\$ 0	\$ 0	\$ 0	\$ 0	259,205	0.1%
Neighborhood Enhancements	372,033	47,490	1,021,456	1,543,765	439,797	29,810	0	0	0	0	3,454,351	0.8%
Park and Recreation	1,839,063	2,937,426	1,429,782	1,767,125	2,906,941	1,287,845	2,132,759	4,179,983	1,833,322	942,113	21,256,359	5.1%
Storm Drainage	247,379	2,052,136	1,860,132	1,145,108	3,543,441	831,127	681,712	1,255,164	2,278,365	2,228,877	16,123,441	3.9%
Street Lighting	373,785	383,219	328,790	42,651	366,056	160,617	193,988	93,495	31,696	261,068	2,235,365	0.5%
Sidewalk Construction	150,000	223,718	137,426	307,558	0	59,751	95,672	99,009	0	29,713	1,102,847	0.3%
Curb Construction and Replacement	567,072	630,463	751,845	736,551	62,373	0	0	0	0	0	2,748,304	0.7%
Traffic Signals	209,603	357,555	433,556	390,740	471,636	693,767	853,902	808,592	290,030	493,215	5,002,596	1.2%
Street Improvements	10,728,324	8,647,128	15,219,153	15,464,654	24,597,561	36,297,449	28,279,989	40,344,467	34,677,417	34,931,661	249,187,803	59.9%
Public Buildings	9,257,947	3,996,404	10,320,979	1,409,046	14,103,798	6,104,068	22,876,346	27,117,429	3,659,534	296,330	99,141,881	23.8%
Bridge Repair/Replacement	0	379,520	1,139,373	1,755,790	662,081	287,850	73,813	66,236	4,045	63,987	4,432,695	1.1%
Fire Equipment	0	190,292	0	0	567,675	43,367	330,633	380,741	322,663	608,585	2,443,956	0.6%
Public Equipment	207,809	1,470,051	103,898	6,045	17,851	123,164	2,508,667	2,390,815	1,146,397	554,528	8,529,225	2.1%
Radio Trunking System	100,866	0	0	18,150	0	0	0	0	0	0	119,016	0.0%
	<u>\$ 24,065,217</u>	<u>\$ 21,315,402</u>	<u>\$ 32,751,890</u>	<u>\$ 24,813,132</u>	<u>\$ 47,739,210</u>	<u>\$ 45,935,235</u>	<u>\$ 58,027,481</u>	<u>\$ 76,735,931</u>	<u>\$ 44,243,469</u>	<u>\$ 40,410,077</u>	<u>\$ 416,037,044</u>	<u>100%</u>

2006-2010 Capital Improvements Programs

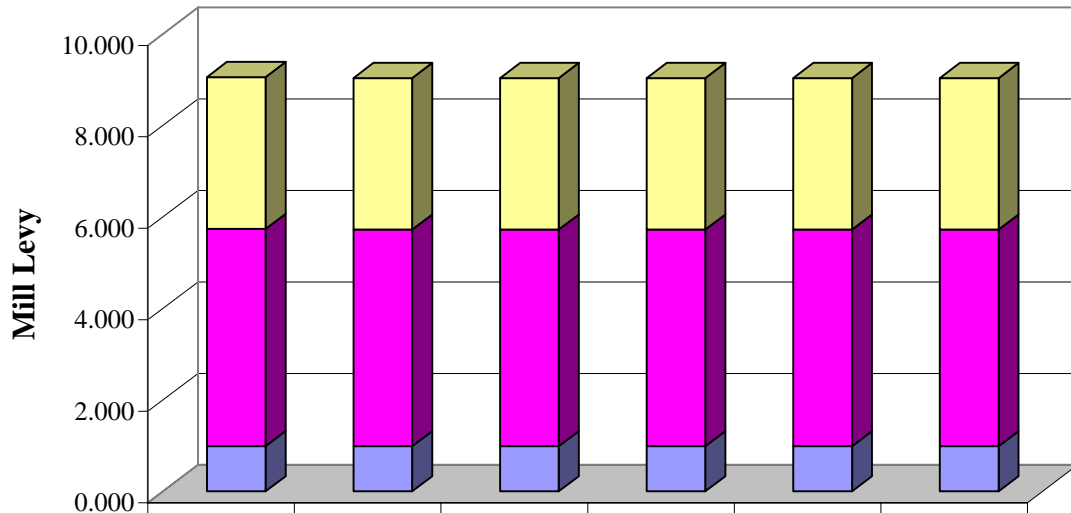
Project Cost by Category



2006-2010 CIP = \$188,103,500

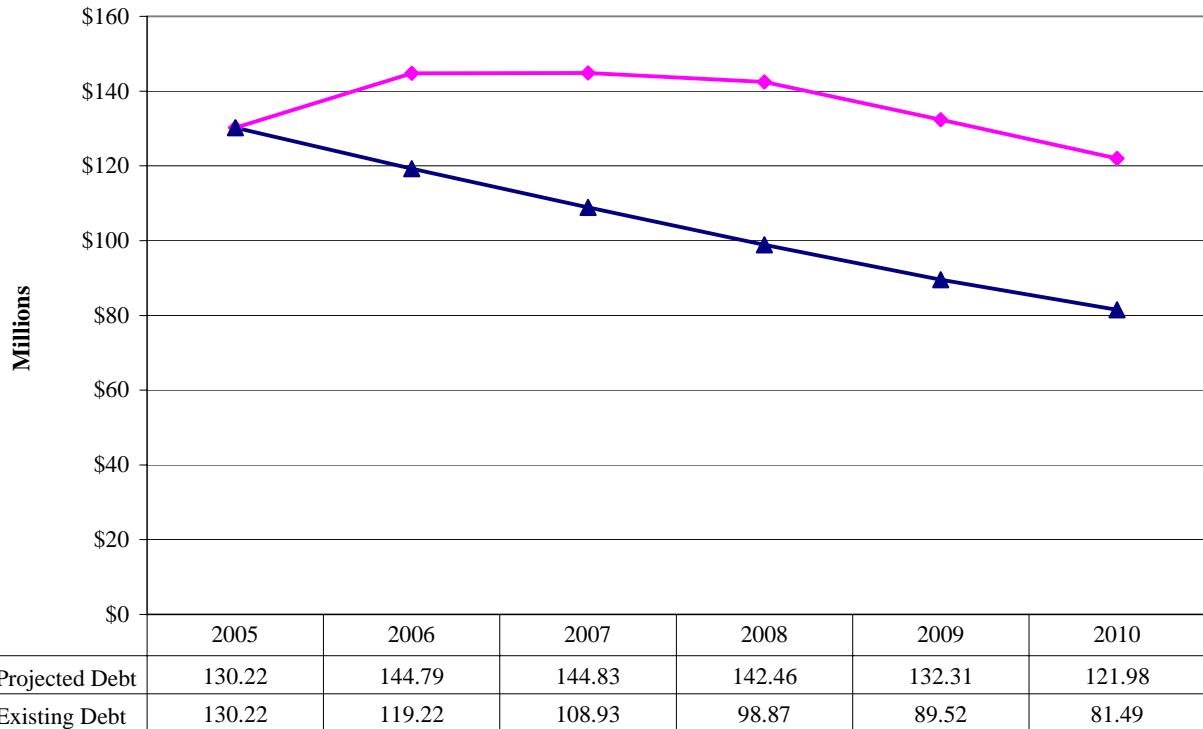
PROJECTED MILL LEVY RATES

2006-2010 Capital Improvements Program

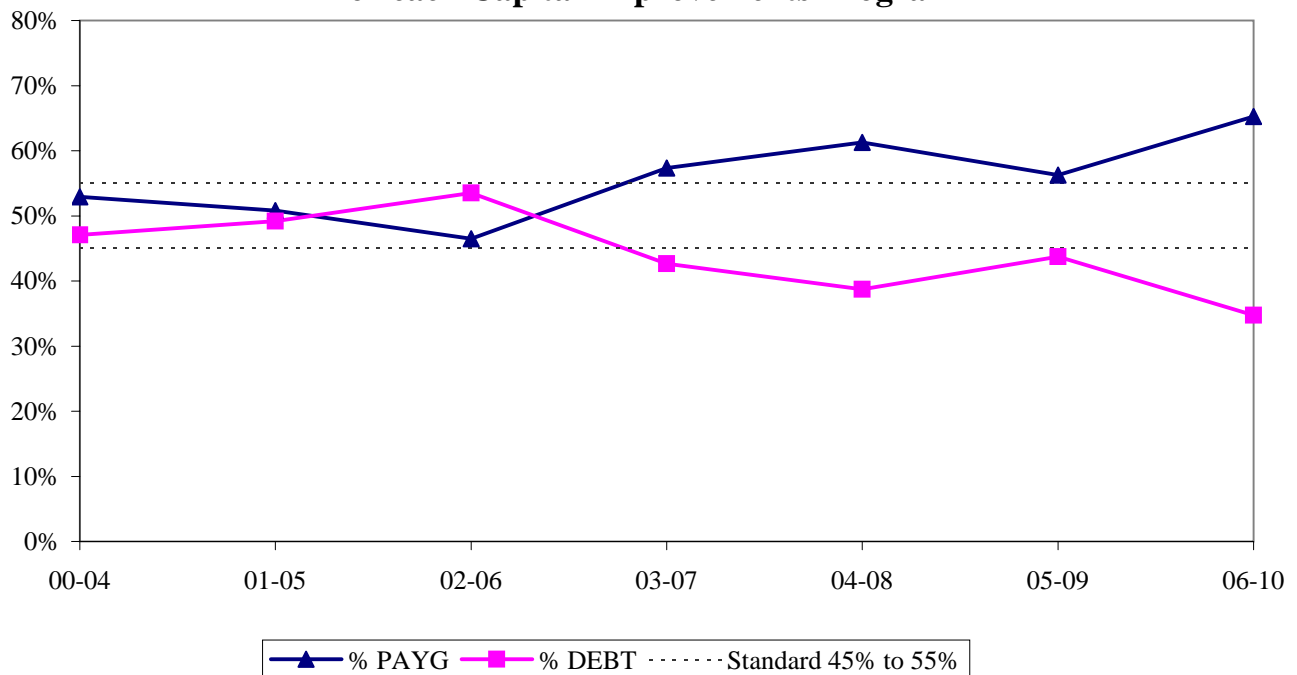


General Fund	3.319	3.313	3.313	3.313	3.313	3.313
Fire Service Fund	4.746	4.735	4.735	4.735	4.735	4.735
Stormwater Utility Fund	0.992	0.989	0.989	0.989	0.989	0.989

ANNUAL OUTSTANDING DEBT 2006-2010 Capital Improvements Program



PERCENT OF DEBT AND P.A.Y.G. TO TOTAL CITY-FUNDED PROJECTS for each Capital Improvements Program

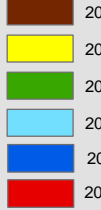




Capital Improvements Program

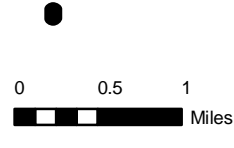
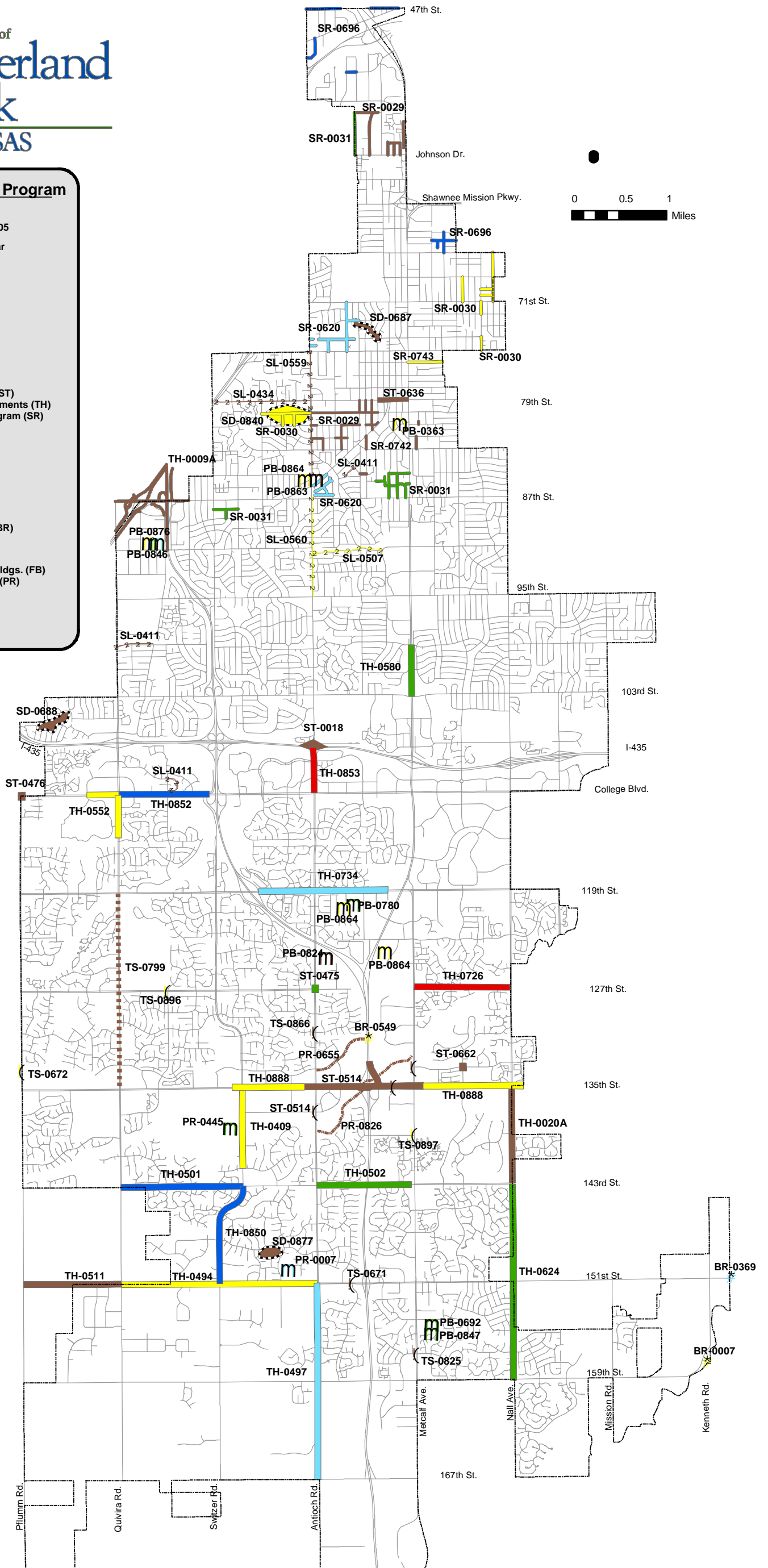
2006-2010
Adopted August 15, 2005

Construction Year



- Street Improvements (ST)
- Thoroughfare Improvements (TH)
- Residential Street Program (SR)
- ■ ■ Fiber Optic Cable (TS)
- ⚡ Street Lights (SL)
- ! Traffic Signals (TS)
- # Bridge Replacement (BR)
- m Public Buildings (PB)
- m Fire Service - Public Bldgs. (FB)
- m Parks and Recreation (PR)
- ⚡ Storm Drainage (SD)
- ■ ■ ■ Bike/Hike Trail (PR)

13500 PFLUMM
13000 HALLER
12500 RICHARDS
12000 GALLETT
11500 PARKWELL
11000 ROSEHILL
10500 GARDEN
10000 GARDENWAY
9500 QUIVIRA
9000 QUIVIRA
8500 QUIVIRA
8000 QUIVIRA
7500 QUIVIRA
7000 QUIVIRA
6500 QUIVIRA
6000 QUIVIRA
5500 QUIVIRA
5000 QUIVIRA
4500 QUIVIRA
4000 QUIVIRA
3500 QUIVIRA
3000 QUIVIRA
2500 QUIVIRA
2000 QUIVIRA
1500 QUIVIRA
1000 QUIVIRA
500 QUIVIRA
0 QUIVIRA



**2006-2010 Capital Improvements Program
Projects with a 2006 Finance Year**

Project #	Description	Amount
BR-0007	Kenneth Road, South of 159th	600,000
PB-0864	Remodel Antioch Justice Center, Sanders Justice Center and TRCC	3,347,000
PB-0363	Community Center	16,385,000
PB-0876	Shawnee Mission P.W. Maintenance Car Wash Facility	100,000
PE-0467	2006 Technology	180,000
PE-0489	2006 Police Technology	190,600
PE-0722	2006 Fiber Deployment	50,000
PE-0763	2006 Software Licenses	100,000
PE-0865	Automated Vehicle Location System	175,000
PR-0753	2006 Public Art	100,000
PR-0430	2006 Greenway Linkages	60,000
PR-0048	2006 Small Improvement Projects	100,000
PR-0862	Botanical Garden Water Rill and Walkways	300,000
PR-0423	2006 Park Improvements	800,000
SL-0506	2006 Residential Streetlighting	100,000
SL-0507	2006 Collector Streetlighting	100,000
SL-0560	2006 Thoroughfare Streetlighting	260,000
SR-0030	2006 Residential Street Program	5,405,000
SR-0743	2006 CDBG Program	500,000
SW-0509	2006 Sidewalk Construction	90,000
TH-0726D	Design - 127th: Metcalf to Nall	350,000
TH-0494	151st: Antioch to Quivira	10,510,000
TH-0512	2006 Preliminary Design	200,000
TH-0409	Switzer: 135th to 141st	6,570,000
TH-0497D	Design - Antioch; 151st - 167th	1,041,000
TH-0888	135th Street - Metcalf to Nall and Switzer to Antioch	7,750,000
TH-0552	Quivira: College to 114th and College: Quivira to Oakmont	1,825,000
TS-0672	133rd & Pflumm Traffic Signal	150,000
TS-0414	2006 Traffic Signal Installation, Modification and Replacement:	150,000
TS-0896	2006 Traffic Signal Installation, 127th & Nieman	150,000
TS-0897	2006 Traffic Signal Installation, 139th & Metcalf	150,000
TS-0056	2006 OPTCS - Phase 6	842,000
TS-0849	OPTICOM Upgrade	120,000
TS-0749	KC Scout/OPTCS Interface	180,000
TS-0750	135th Street Changeable Message Signs	270,000
FB-0217	Generator - Administrative Offices	34,000
FB-0848	Fire Training Center Concrete Apron Replacement	455,000
FB-0874	Access Security System for Fire Department Facilities	90,000
FE-0629	Fire Truck - Pumper	350,000
PR-0086	2006 Golf Course Improvements	923,000
SD-0505	2006 Storm Drainage Improvement	320,000
SD-0840	79th & Grandview Stormdrainage Improvements	895,000
SD-0855	2006 Preliminary Stormwater Engineering Studies	120,000
TOTAL 2006		\$ 62,387,600

CITY OF OVERLAND PARK

August 15, 2005

2006-2010 Capital Improvements Program for Governing Body Review

Staff Base Plan

SUMMARY OF RATIOS		Standard	2005	2006	2007	2008	2009	2010	2006/2010	2005/2009
1.	Percentage of General Fund Ending Cash to Operating Expenditures		66.4%	56.8%	55.2%	42.6%	36.9%	30.6%		
2.	Percentage of P.A.Y.G. to Total Program	20% to 30% (1)	19.0%	31.1%	30.5%	42.3%	51.9%	43.7%	37.5%	25.0%
3.	Percentage of P.A.Y.G. to City funds used to Finance Capital Imp. Projects	45% to 55% (1)	96.2%	68.2%	53.0%	57.2%	82.4%	75.7%	65.2%	56.2%
4.	Percentage of Debt to Total Program	35% to 50% (1)	0.7%	14.6%	27.2%	31.8%	11.2%	14.2%	20.1%	19.5%
5.	Percentage of Debt to City funds used to Finance Capital Imp. Projects	45% to 55% (1)	3.8%	31.8%	47.0%	42.8%	17.6%	24.3%	34.8%	43.8%
6.	Total Direct Debt Per Capita	\$675 (3)	773	844	830	799	733	663		
7.	Percent of Direct and Overlapping Debt to Market Value of Tangible Property (4)	4% (3) - 5% (2)	3.35%	3.43%	3.41%	3.38%	3.30%	3.22%		
8.	Mill Levy Equivalen of B. & I. Transfer	6 Mills (1)	4.56	4.74	5.33	5.46	5.33	4.75		
9.	Percentage of Debt Service Cost to General Fund Operating Expenditures	Less than 20% to 25% (2)	18.6%	18.3%	20.1%	20.3%	19.6%	17.1%	19.1%	16.8%
10.	Percentage of 2004 Operating Budget to City Funds used to Finance 2005-09 CIP	45% to 55% (1)							41.1%	43.1%
11.	Percentage of City Funds used to Finance 2005-09 CIP to 2004 Operating Budget	45% to 55% (1)							58.9%	56.9%

CITY OF OVERLAND PARK

August 15, 2005

2006-2010 Capital Improvements Program for Governing Body Review

Staff Base Plan

<u>SUMMARY OF RATIOS</u>	<u>Standard</u>	<u>2005</u>	<u>2006</u>	<u>2007</u>	<u>2008</u>	<u>2009</u>	<u>2010</u>	<u>2006/2010</u>	<u>2005/2009</u>
12. Percentage of Operating Expenditures to General Fund Current Revenue	85%	<u>78.6%</u>	<u>79.4%</u>	<u>80.1%</u>	<u>80.9%</u>	<u>81.4%</u>	<u>81.6%</u>	<u>80.2%</u>	<u>81.5%</u>
13. Percentage of Maintenance Expenditures to General Fund Current Revenue	2%	<u>3.6%</u>	<u>3.5%</u>	<u>1.4%</u>	<u>1.6%</u>	<u>1.8%</u>	<u>1.6%</u>	<u>2.2%</u>	<u>2.0%</u>
14. Percentage of Capital Expenditures Expenditures to General Fund Current Revenue	13%	<u>22.5%</u>	<u>18.5%</u>	<u>14.6%</u>	<u>22.8%</u>	<u>17.3%</u>	<u>18.3%</u>	<u>20.4%</u>	<u>14.0%</u>
15. General Fund Transfer to Fire as a Percentage of General Fund Current Revenue		<u>1.4%</u>	<u>3.3%</u>	<u>3.0%</u>	<u>2.9%</u>	<u>2.7%</u>	<u>2.5%</u>	<u>2.6%</u>	<u>0.5%</u>

(1) Source: Staff

(2) Source: I.C.M.A.

(3) Source: Moody's Investor Service

(4) Assumes Overlapping Debt growth rate of 14% per year

2006-2010 CIP
2006-2010 Capital Improvements Program
August 15, 2005

Projects By Category & Funding Source	2005	2006	2007	2008	2009	2010	Total 2006/2010	Total 2005/2009	Increase/ Decrease
<u>Bridge Replacement</u>									
General Obligation Bonds	\$ -	-	-	696,000	-	-	696,000	1,188,000	(492,000)
Pay-As-You-Go	500,000	200,000	-	-	-	-	200,000	-	200,000
Johnson County Funds	-	-	-	-	-	-	-	-	-
Funds From Other Cities	-	-	-	696,000	-	-	696,000	696,000	-
KDOT	-	400,000	-	-	-	-	400,000	-	400,000
TEA21	-	-	-	2,608,000	-	-	2,608,000	2,608,000	-
TOTAL	\$ 500,000	600,000	-	4,000,000	-	-	4,600,000	4,492,000	108,000
<u>Fire Service - Public Buildings</u>									
General Obligation Bonds	\$ -	-	-	-	-	-	-	-	-
Pay-As-You-Go	-	455,000	-	-	-	-	455,000	-	455,000
Johnson County Funds	-	-	-	-	-	-	-	-	-
Equipment Reserve Fund	34,000	124,000	-	-	-	-	124,000	68,000	56,000
TOTAL	\$ 34,000	579,000	-	-	-	-	579,000	68,000	511,000
<u>Fire Service - Public Equipment</u>									
Equipment Reserve Fund	\$ 830,000	350,000	800,000	490,000	640,000	-	2,280,000	2,940,000	(660,000)
Other Financing	-	-	-	-	-	-	-	-	-
TOTAL	\$ 830,000	350,000	800,000	490,000	640,000	-	2,280,000	2,940,000	(660,000)
<u>Public Buildings</u>									
General Obligation Bonds	\$ -	-	-	-	-	-	-	9,350,000	(9,350,000)
20 yr General Obligation Bonds	-	16,385,000	-	-	-	-	16,385,000	-	16,385,000
Pay-As-You-Go	3,022,000	3,447,000	587,000	150,000	-	-	4,184,000	-	4,184,000
1/8th Cent Sales Tax	-	-	-	-	-	-	-	-	-
Storm Water Utility	-	-	275,000	-	-	-	275,000	275,000	-
Equipment Reserve Fund	-	-	-	-	-	-	-	-	-
TEA21	-	-	-	-	-	-	-	-	-
Other Federal Funding	-	-	-	-	-	-	-	-	-
Other Financing	-	-	-	-	-	-	-	-	-
TOTAL	\$ 3,022,000	19,832,000	862,000	150,000	-	-	20,844,000	9,625,000	11,219,000
<u>Public Equipment</u>									
General Obligation Bonds	\$ -	-	-	-	-	-	-	-	-
Pay-As-You-Go	450,000	225,000	50,000	200,000	743,800	516,800	1,735,600	1,060,600	675,000
LEAG	-	-	-	-	-	-	-	-	-
Equipment Reserve Fund	1,479,000	470,600	826,800	1,147,200	200,000	200,000	2,844,600	3,595,800	(751,200)
Recovered Costs	-	-	-	-	-	-	-	-	-
Other Debt Financing	510,000	-	-	-	-	-	-	510,000	(510,000)
Other Financing	-	-	-	-	-	-	-	-	-
TOTAL	\$ 2,439,000	695,600	876,800	1,347,200	943,800	716,800	4,580,200	5,166,400	(586,200)
<u>Park and Recreation</u>									
General Obligation Bonds	\$ -	-	1,330,000	3,480,000	-	-	4,810,000	4,810,000	-
Pay-As-You-Go	450,000	350,000	50,000	50,000	50,000	50,000	550,000	650,000	(100,000)
KDOT	579,780	-	-	-	-	-	-	-	-
Other Federal Financing	-	-	-	-	-	-	-	97,680	(97,680)
Special Park & Recreation Fund	1,834,000	960,000	785,000	785,000	785,000	800,000	4,115,000	4,025,000	90,000
County	126,400	-	-	-	-	-	-	-	-
Private Contributions	50,000	50,000	50,000	50,000	50,000	50,000	250,000	250,000	-
Other Financing	-	-	-	-	-	-	-	-	-
TOTAL	\$ 3,040,180	1,360,000	2,215,000	4,365,000	885,000	900,000	9,725,000	9,832,680	(107,680)

2006-2010 CIP
2006-2010 Capital Improvements Program
August 15, 2005

Projects By Category & Funding Source	2005	2006	2007	2008	2009	2010	Total 2006/2010	Total 2005/2009	Increase/ Decrease
<u>Golf Course</u>									
Golf Course Revenue	843,500	923,000	800,000	629,600	1,103,700	873,000	4,329,300	4,299,800	29,500
TOTAL	\$ 843,500	923,000	800,000	629,600	1,103,700	873,000	4,329,300	4,299,800	29,500
<u>Storm Drainage</u>									
General Obligation Bonds	\$ -	-	-	-	-	-	-	-	-
Pay-As-You-Go	-	-	-	-	-	-	-	-	-
Special Assessment Bonds	-	25,000	25,000	25,000	25,000	25,000	125,000	125,000	-
Storm Water Utility	500,000	550,000	530,000	530,000	530,000	530,000	2,670,000	2,575,000	95,000
Johnson County Funds	90,000	760,000	90,000	90,000	90,000	90,000	1,120,000	-	1,120,000
Other Cities	-	-	-	-	-	-	-	-	-
TOTAL	\$ 590,000	1,335,000	645,000	645,000	645,000	645,000	3,915,000	2,700,000	1,215,000
<u>Streetlighting</u>									
Pay-As-You-Go	\$ 360,000	359,000	360,000	380,000	380,000	380,000	1,859,000	1,840,000	19,000
Escrow Funds	-	-	-	-	-	-	-	-	-
Johnson County Funds	86,000	101,000	-	-	-	-	101,000	-	101,000
Funds From Other Cities	-	-	-	-	-	-	-	-	-
TOTAL	\$ 446,000	460,000	360,000	380,000	380,000	380,000	1,960,000	1,840,000	120,000
<u>Residential Street Program</u>									
General Obligation Bonds	\$ -	1,000,000	1,000,000	1,000,000	500,000	-	3,500,000	5,000,000	(1,500,000)
Pay-As-You-Go	-	-	-	-	-	-	-	-	-
1/8th Sales Tax	2,265,000	2,905,000	2,580,000	2,580,000	3,700,000	-	11,765,000	12,005,000	(240,000)
Johnson County Funds	-	-	-	-	-	-	-	-	-
School Sales Tax	1,591,000	1,500,000	-	-	-	-	1,500,000	2,400,000	(900,000)
Funds From Other Cities	-	-	-	-	-	-	-	-	-
Comm. Development Block Grant	800,000	500,000	500,000	500,000	500,000	-	2,000,000	2,500,000	(500,000)
Other Financing	-	-	-	-	-	-	-	-	-
TOTAL	\$ 4,656,000	5,905,000	4,080,000	4,080,000	4,700,000	-	18,765,000	21,905,000	(3,140,000)
<u>Sidewalk Construction & Maintenance</u>									
Pay-As-You-Go	\$ 90,000	90,000	90,000	90,000	90,000	90,000	450,000	450,000	-
TOTAL	\$ 90,000	90,000	90,000	90,000	90,000	90,000	450,000	450,000	-
<u>Street Improvements</u>									
General Obligation Bonds	\$ 489,000	-	-	-	-	-	-	13,614,060	(13,614,060)
20 yr General Obligation Bonds	8,819,000	-	-	-	-	-	-	-	-
Pay-As-You-Go	392,500	-	157,000	-	-	-	157,000	405,800	(248,800)
1/8th Cent Sales Tax'	-	-	-	-	-	-	-	-	-
Escrow Funds	-	-	-	-	-	-	-	-	-
Special Assessment Bonds	-	-	-	-	-	-	-	-	-
Storm Water Utility	50,000	-	-	-	-	-	-	50,000	(50,000)
Johnson County Funds	1,054,000	-	-	-	-	-	-	2,413,000	(2,413,000)
School Sales Tax	220,000	-	-	-	-	-	-	220,000	(220,000)
Funds From Other Cities	733,500	-	-	-	-	-	-	468,000	(468,000)
KDOT	48,240,000	-	-	-	-	-	-	48,240,000	(48,240,000)
TEA21	9,385,000	-	-	-	-	-	-	9,385,000	(9,385,000)
Other Financing Sources	-	-	-	-	-	-	-	-	-
TOTAL	\$ 69,383,000	-	157,000	-	-	-	157,000	74,795,860	(74,638,860)

7.19

2006-2010 CIP
2006-2010 Capital Improvements Program
August 15, 2005

Projects By Category & Funding Source	2005	2006	2007	2008	2009	2010	Total 2006/2010	Total 2005/2009	Increase/ Decrease
<u>Thoroughfare Improvements - Excise Tax Eligible</u>									
General Obligation Bonds	\$ 285,000	7,159,000	9,958,000	5,700,000	3,000,000	800,000	26,617,000	5,663,808	20,953,192
20 yr General Obligation Bonds							-	-	-
Pay-As-You-Go	365,000	1,376,000	450,000	4,026,900	2,307,100	1,000,000	9,160,000	45,000	9,115,000
Excise Tax	1,738,950	3,200,000	6,535,950	200,000	3,200,000	1,700,000	14,835,950	12,960,500	1,875,450
1/8th Sales Tax	2,378,750	2,791,900	2,203,300		2,959,900		7,955,100	9,994,475	(2,039,375)
Escrow Funds	226,830	458,100	120,750	98,100			676,950	1,133,555	(456,605)
Special Assessment Bonds							-	-	-
Johnson County Funds	4,630,250	3,644,750	5,807,000		3,349,000	2,000,000	14,800,750	12,026,750	2,774,000
School Sales Tax				300,000			300,000	-	300,000
Funds From Other Cities	4,151,220	1,391,250	3,062,000		921,000		5,374,250	8,036,612	(2,662,362)
TEA21	2,000,000	6,400,000					6,400,000	9,000,000	(2,600,000)
OFIN							-	-	-
TOTAL	\$ 15,776,000	26,421,000	28,137,000	10,325,000	15,737,000	5,500,000	86,120,000	58,860,700	27,259,300
<u>Thoroughfare Improvements - Not Excise Tax Eligible</u>									
General Obligation Bonds		1,000,000				1,500,000	2,500,000	2,250,000	250,000
20 yr General Obligation Bonds							-	-	-
Pay-As-You-Go			500,000	1,200,000	1,000,000	1,000,000	3,700,000	-	3,700,000
1/8th Sales Tax	800,000	825,000	1,425,000				2,250,000	2,009,000	241,000
Escrow Funds							-	-	-
Special Assessment Bonds							-	-	-
Johnson County Funds	\$ 312,500			1,850,000	500,000	1,000,000	3,350,000	2,529,500	820,500
Funds From Other Cities							-	-	-
KDOT							-	-	-
TEA21			2,265,000	2,700,000	3,000,000	2,000,000	9,965,000	2,265,000	7,700,000
OFIN							-	-	-
TOTAL	\$ 1,112,500	1,825,000	4,190,000	5,750,000	4,500,000	5,500,000	21,765,000	9,053,500	12,711,500
<u>Traffic Signals</u>									
Pay-As-You-Go	\$ 944,700	1,055,000	667,000	1,420,000	1,425,000	1,520,000	6,087,000	2,770,000	3,317,000
Escrow Funds	117,800	75,000	75,000	80,000	75,000	80,000	385,000	380,000	5,000
Johnson County Funds	51,000	386,000					386,000	-	386,000
School Sales Tax	25,000						-	-	-
Funds From Other Cities		145,000					145,000	-	145,000
TEA21		351,000	680,000				1,031,000	3,481,000	(2,450,000)
Other Federal Financing							-	200,000	(200,000)
Recovered Costs							-	-	-
Other Financing Sources							-	-	-
TOTAL	\$ 1,138,500	2,012,000	1,422,000	1,500,000	1,500,000	1,600,000	8,034,000	6,831,000	1,203,000
<u>Contingency - Street Improvements</u>									
General Obligation Bonds	\$						-	-	-
Pay-As-You-Go							-	-	-
TOTAL	\$	-	-	-	-	-	-	-	-
<u>Combined Total All Categories</u>	\$ 103,900,680	62,387,600	44,634,800	33,751,800	31,124,500	16,204,800	188,103,500	212,859,940	(24,756,440)

7.20

2006-2010 CIP
2006-2010 Capital Improvements Program
August 15, 2005

<u>Summary By Funding Source:</u>	<u>2005</u>	<u>2006</u>	<u>2007</u>	<u>2008</u>	<u>2009</u>	<u>2010</u>	<u>Total 2006/2010</u>	<u>Total 2005/2009</u>	<u>Increase/ Decrease</u>
General Obligation Bonds	\$ 774,000	9,159,000	12,288,000	10,876,000	3,500,000	2,300,000	38,123,000	41,875,868	(3,752,868)
20 yr General Obligation Bonds	8,819,000	16,385,000	-	-	-	-	16,385,000	16,385,000	16,385,000
Pay-As-You-Go	6,574,200	7,557,000	2,911,000	7,516,900	5,995,900	4,556,800	28,537,600	7,221,400	21,316,200
LEAG	-	-	-	-	-	-	-	-	-
Excise Tax	1,738,950	3,200,000	6,535,950	200,000	3,200,000	1,700,000	14,835,950	12,960,500	1,875,450
1/8th Sales Tax	5,443,750	6,521,900	6,208,300	2,580,000	6,659,900	-	21,970,100	24,008,475	(2,038,375)
Escrow Funds	344,630	533,100	195,750	178,100	75,000	80,000	1,061,950	1,513,555	(451,605)
Special Assessment Bonds	0	25,000	25,000	25,000	25,000	25,000	125,000	125,000	0
Storm Water Utility	550,000	550,000	805,000	530,000	530,000	530,000	2,945,000	2,900,000	45,000
Johnson County Funds	6,350,150	4,891,750	5,897,000	1,940,000	3,939,000	3,090,000	19,757,750	16,969,250	2,788,500
School Sales Tax	1,836,000	1,500,000	-	300,000	-	-	1,800,000	2,620,000	(820,000)
Funds From Other Cities	4,884,720	1,536,250	3,062,000	696,000	921,000	-	6,215,250	9,200,612	(2,985,362)
KDOT	48,819,780	400,000	-	-	-	-	400,000	48,240,000	(47,840,000)
TEA21	11,385,000	6,751,000	2,945,000	5,308,000	3,000,000	2,000,000	20,004,000	26,739,000	(6,735,000)
Comm. Devel. Block Grant	800,000	500,000	500,000	500,000	500,000	-	2,000,000	2,500,000	(500,000)
Other Federal Financing	-	-	-	-	-	-	0	297,680	(297,680)
Equipment Reserve Fund	2,343,000	944,600	1,626,800	1,637,200	840,000	200,000	5,248,600	6,603,800	(1,355,200)
Recovered Costs	-	-	-	-	-	-	-	-	-
Golf Course Revenue	843,500	923,000	800,000	629,600	1,103,700	873,000	4,329,300	4,299,800	29,500
Special Park & Rec Fund	1,834,000	960,000	785,000	785,000	785,000	800,000	4,115,000	4,025,000	90,000
Private Contributions	50,000	50,000	50,000	50,000	50,000	50,000	250,000	250,000	0
Other Debt Financing	510,000	-	-	-	-	-	-	510,000	(510,000)
Other Financing Sources	-	-	-	-	-	-	-	-	0
TOTAL	\$ 103,900,680	62,387,600	44,634,800	33,751,800	31,124,500	16,204,800	188,103,500	212,859,940	(24,756,440)

General Fund - Debt

Proposed Debt Issue	\$ 10,103,000	25,569,000	12,313,000	10,901,000	3,525,000	2,325,000	54,633,000		
General Obligation:									
Five Yr. Maturities	510,000	-	-	-	-	-	0		
Ten Yr. Maturities	774,000	9,159,000	12,288,000	10,876,000	3,500,000	2,300,000	38,123,000		
Ten Yr. Maturities (Oak Park)	-	-	-	-	-	-	-		
Fifteen Yr. Maturities	-	-	-	-	-	-	-		
Twenty Yr. Maturities	8,819,000	16,385,000	-	-	-	-	16,385,000		
Twenty Yr. Maturities (Oak Park)	-	-	-	-	-	-	-		
Special Assessment:									
Ten Yr. Maturities	-	25,000	25,000	25,000	25,000	25,000	125,000		
Ten Yr. Maturities (Oak Park)	-	-	-	-	-	-	-		
Twenty Yr. Maturities (Oak Park)	-	-	-	-	-	-	-		

Proposed Pay-As-You-Go	\$ 6,574,200	7,557,000	2,911,000	7,516,900	5,995,900	4,556,800	28,537,600	7,221,400	21,316,200
------------------------	--------------	-----------	-----------	-----------	-----------	-----------	------------	-----------	------------

Fire Service Fund - Debt

General Obligation:									
Ten Yr. Maturities	\$ -	-	-	-	-	-	-	-	-
Short Term Debt									
Proposed Debt Issue	\$ -	-	-	-	-	-	-	-	-

Total General Fund & Fire Fund Debt Issue	\$ 10,103,000	25,569,000	12,313,000	10,901,000	3,525,000	2,325,000	54,633,000	-	54,633,000
--	----------------------	-------------------	-------------------	-------------------	------------------	------------------	-------------------	----------	-------------------

2006-2010 Capital Improvements Program

Key to Project Categories

BRIDGE REPAIR AND REPLACEMENT - This category accounts for bridge construction, replacement and repair projects on streets throughout the City.

CURB REPAIR AND REPLACEMENT - Curb repair and replacement projects are identified by telephone calls from property owners, as well as information from City staff. When feasible, curb projects are coordinated with the overlay program and new street construction. Costs for these repairs have been removed from the CIP and included as part of a targeted maintenance program.

PUBLIC BUILDINGS - This public building category accounts for remodeling and/or new construction of public facilities.

PUBLIC EQUIPMENT - This public equipment category accounts for acquisition of major equipment.

PARKS AND RECREATION – This category includes the acquisition and development of various parks, construction and renovation of recreational facilities (e.g., pools, community centers and the arboretum), on-going implementation of a 25-year development plan for construction of greenway linkages, park improvements based on recommendations of Citizens Advisory Committee on Parks and Recreation and golf course improvements.

STREET LIGHTING - This category accounts for street lighting improvements made in conjunction with thoroughfare construction and other street improvement projects. It also includes annual lighting improvements on unlit collector streets. The Public Works staff identifies these projects each year based on an assessment of needs-to-improve traffic service on existing collector streets.

RESIDENTIAL STREET PROGRAM - Each year the Public Works Committee identifies residential streets to be improved during the construction season. Eligible residential streets were identified and prioritized in 1998 based on set criteria, including adequate storm drainage.

STREET IMPROVEMENT - The street improvement category includes street construction, thoroughfare and street widening and other types of non-thoroughfare street improvements. Costs for intersection improvements have been removed from the CIP and are included as part of a targeted maintenance program.

SIDEWALK CONSTRUCTION AND MAINTENANCE - Sidewalk construction includes new construction of sidewalks in areas without existing sidewalks.

KEY TO PROJECT CATEGORIES - continued

THOROUGHFARE IMPROVEMENTS - This category includes new construction, improvements and widening of designated thoroughfares throughout the City.

TRAFFIC SIGNALS - The traffic signal category includes installation of new signals at unsignaled intersections, replacement and upgrade of existing signals and interim improvements to signalization in anticipation of future construction, which will require installation of a more permanent signal and signalization of newly constructed thoroughfare street improvements. Maintenance costs for the traffic signal program have been removed from the CIP and are included as part of a targeted maintenance program.

FIRE BUILDINGS - The public building category accounts for remodeling and/or new construction of public facilities for fire service.

FIRE EQUIPMENT - The public equipment category accounts for acquisition of major equipment for fire service.

STORM DRAINAGE - This category addresses stormwater management infrastructure improvements within the City. Infrastructure improvements are made based on the City's compliance with the National Pollutant Discharge Elimination System requirements. In addition, the Public Works Committee receives petitions on an ongoing basis from property owners to correct storm drainage problems. Based on these petitions, improvement districts are created as funds become available.

2006-2010 Capital Improvements Program

Key to Funding Sources

GO - GENERAL OBLIGATION: General obligation refers to the process of using long-term debt to finance the cost of a capital improvement. Prior to project planning and design, statutory authority must be established, and the Governing Body must adopt a resolution authorizing the improvement.

PAYG - PAY AS YOU GO: Funding budgeted each year in order to pay cash for the capital improvement. This fund is used in lieu of issuing general obligation bonds.

EXCIS - EXCISE TAX: Represents excise tax payments.

1/8STX - 1/8-CENT SALES TAX: Revenues from a Citywide, voter-approved 1/8-cent sales tax to finance a street improvement program targeted to fund improvements to residential streets and thoroughfares. The tax was originally approved in November of 1998, went into effect in April of 1999. In April of 2003, voters approved an extension of this tax for an additional five-year period. The tax is set to sunset in March of 2009.

ESC - ESCROW FUNDS NOT AT RISK: Escrow funding paid by private developers or property owners to pay their portion of the project. This money is paid prior to the start of the project.

UESC - UNSPECIFIED ESCROW FUNDS: Escrow funds paid by private developers or property owners at the time of development. These funds are not tied to a specific project when paid.

SA - SPECIAL ASSESSMENT: Property owners benefited by improvements are charged all or a portion of the cost of the improvement, based on the type of project. In the case of a storm drainage project, property owners are assessed 4.5% of their total property and improvement valuation.

SWU - STORMWATER UTILITY FUNDS: Stormwater utility funding includes revenue generated from an ad valorem property tax dedicated to stormwater management and from a Stormwater User Fee paid by all property owners within the City. The user fee is based on the amount of impervious surface existing on each property.

CTY – COUNTY FUNDS: County funding includes both the CARS program and the Johnson County Storm Water Drainage program. The funding source for the drainage program is the County's 1/10 cent stormwater sales tax.

SSTX – SCHOOL SALES TAX FUNDS: The City's portion of revenues from a countywide 1/4-cent sales tax to support economic development. This funding was earmarked to help fund schools. Passed in August 2002, sales tax collections begin on January 1, 2003. The tax is scheduled to sunset on December 31, 2005.

KEY TO FUNDING SOURCES – continued

OCITY - OTHER CITY: Funding from other cities. The cost of a capital improvement project that is adjacent to another city is shared with that city.

KDOT - KANSAS DEPARTMENT OF TRANSPORTATION: Represents a one-time state funding of system enhancements as a result of an increase in car registration and motor vehicle fees.

TEA21 - TRANSPORTATION EQUITY ACT OF THE 21st CENTURY: Congress allocates these federal funds to each state, which distributes the funding. Prioritization of projects and funds in the Kansas City metropolitan area is done by the Mid-America Regional Council (MARC).

CDBG - COMMUNITY DEVELOPMENT BLOCK GRANT: Funds from the City's CDBG entitlement appropriation are used to fund residential street improvement projects recommended by the CDBG Advisory Committee. Federal guidelines require that a minimum of 70% of these funds be spent on projects and programs that benefit low and moderate income persons within the community.

OFED - OTHER FEDERAL FUNDING: Funding from other federal sources, such as CMAQ (Congestion Management/Air Quality Program) funding and federal demonstration project funds.

ERF - EQUIPMENT RESERVE FUND: Represents funding available from the Equipment Reserve Fund. This fund was established to provide flexibility in meeting operational needs by providing a resource to stabilize Citywide equipment replacement in lieu of issuing short-term debt.

RECV - RECOVERED COSTS: Represents projects whose costs will be recovered through increased efficiencies, which result in a decrease in operating expenditures.

GCR - GOLF COURSE REVENUE: Golf Course revenues that exceed operating expenses (which include a computation for overhead) are used to make golf course improvements.

SPR - SPECIAL PARKS AND RECREATION: Revenue to this fund is provided by the liquor tax imposed on gross receipts of liquor sales by clubs, caterers and drinking establishments. One-third of the City's total revenue from this tax is required by state statute to be "expended only for the purchase, establishment, maintenance or expansion of park and recreational services, programs and facilities." Projects are recommended by the Citizens Advisory Committee for Parks and Recreation.

PRIV - PRIVATE FUNDS: These funds will be provided by the fund-raising efforts to support specific projects.

ODF - OTHER DEBT FINANCING: Other debt financing refers to short-term debt financing of less than five years.

OFIN - OTHER FINANCING: Other financing refers to sources of funding that are not normally used in the context of the City's CIP planning.

2006-2010 CAPITAL IMPROVEMENTS PROGRAM

Project Number	Project Description	2006-2010 PLAN					Plan 06-10
		Change From 2005-2009 CIP	Des. Year	Cons. Year	Fin. Year		
BRIDGE REPAIR & REPLACEMENT							
BR-0549	132nd Street and U.S. 69 Overpass DESIGN ONLY	New	2005	2006	2005	*	0 *GO
	Construction of bridge over U.S. 69. The City has requested FY2006 federal funding through Congressman Moore's office. PW committee approved staff to negotiate regarding design contract in early 2005.					*	500,000 *PAYG
						*	0 *CTY
						*	0 *OCITY
						*	0 *KDOT
						*	0 *TEA21
	Project Total					*	<u>500,000</u>
BR-0007	Kenneth Road S. of 159th	Revised Cost	2003	2006	2006		0 GO
	Replacement of bridge deck over the Blue River at 159th. The project cost has increased over the 05-09 plan and funding sources are updated to reflect KDOT funding.	Revised Funding					200,000 PAYG
							0 CTY
							0 OCITY
							400,000 KDOT
							<u>0 TEA21</u>
	Project Total						<u>600,000</u>
BR-0369	151st Street at Kenneth Road	Revised Timing	2005	2008	2008		696,000 GO
	Total replacement of the bridge over the Blue River at 151st. This is a cooperative project with KCMO. Construction year has been delayed per KCMO schedule.						0 PAYG
							0 CTY
							696,000 OCITY
							0 KDOT
							<u>2,608,000 TEA21</u>
						<u>4,000,000</u>	

*indicates project costs not included in plan totals

2006-2010 CAPITAL IMPROVEMENTS PROGRAM

Project Number	Project Description	2006-2010 PLAN				
		Change From 2005-2009 CIP	Des. Year	Cons. Year	Fin. Year	Plan 06-10
BRIDGE REPAIR & REPLACEMENT						
SUBTOTAL -						
BRIDGE REPAIR & REPLACEMENT						
						696,000 GO
						- 20GO
						200,000 PAYG
						- EXCIS
						- 1/8STX
						- ESC
						- UESC
						- SA
						- SWU
						- CTY
						- SSTX
						696,000 OCITY
						400,000 KDOT
						- ISTE A
						2,608,000 TEA21
						- CDBG
						- OFED
						- ERF
						- RECV
						- GCR
						- SPR
						- PRIV
						- ODF
						- OFIN
						<u>4,600,000</u>

*indicates project costs not included in plan totals

2006-2010 CAPITAL IMPROVEMENTS PROGRAM

Project Number	Project Description	2006-2010 PLAN					Plan 06-10
		Change From 2005-2009 CIP	Des. Year	Cons. Year	Fin. Year		
PUBLIC BUILDINGS							
PB-0363A	Community Center	No Change	2001	2006	2003	*	2,514,000 *GO20
	Acquisition of land for new Community Center located in Downtown Overland Park. The land was acquired in 2004.					*	0 *PAYG
						*	0 *TEA21
						*	0 *ERF
						*	0 *OFED
					2004	*	0 *GO
						*	486,000 *PAYG
						*	0 *TEA21
						*	0 *ERF
						*	0 *OFED
		Project Total				*	<u>3,000,000</u>
PB-0011	Downtown Overland Park Signage	No Change	2004	2004	2004	*	0 *GO
	Construction of decorative signage as part of the downtown improvement project. Signage is being installed in the spring of 2005.					*	55,000 *PAYG
						*	0 *TEA21
						*	0 *ERF
						*	0 *OFED
		Project Total				*	<u>55,000</u>
PB-0824	Emergency Command & Control Center	New	2004	2005	2005	*	0 *GO
	Construction in the lower level of the OPFD Training Center. Facility will house Dispatch, Emergency and Traffic Control Services. This project was added during 2005 budget development.					*	2,000,000 *PAYG
						*	0 *1/8STX
						*	0 *SWU
						*	0 *TEA21
						*	0 *ERF
						*	0 *OFED
		Project Total				*	<u>2,000,000</u>
PB-0863	Council Chambers Improvements	New	2005	2005	2005	*	0 *GO
	Project will provide improved A/V Equipment for presentations, modify Council Dais and make Dais and public areas ADA compliant. This project was not included in the 05-09 CIP.					*	397,000 *PAYG
						*	0 *1/8STX
						*	0 *SWU
						*	0 *TEA21
						*	0 *ERF
						*	0 *OFED
		Project Total				*	<u>397,000</u>

*indicates project costs not included in plan totals

2006-2010 CAPITAL IMPROVEMENTS PROGRAM

Project Number	Project Description	2006-2010 PLAN					Plan 06-10
		Change From 2005-2009 CIP	Des. Year	Cons. Year	Fin. Year		
PUBLIC BUILDINGS							
PB-0864	Remodel Antioch Justice Center, Sanders Justice Center & Tomahawk Ridge Community Center	New	2005	2006	2005	*	0 *GO
	Remodel existing facilities to expand property room at Antioch; move Neighborhood Services to Antioch; expand Municipal Court office space at Sanders; expand space for the Police at Sanders into the existing training room; and create Police training facilities at Tomahawk. This project is new to the 06-10 CIP.					*	85,000 *PAYG
						*	0 *1/8STX
						*	0 *TEA21
						*	0 *ERF
						*	0 *OFED
					2006		0 GO
							3,347,000 PAYG
							0 1/8STX
							0 TEA21
							0 ERF
						0 OFED	
	Project Total						<u>3,432,000</u>
PB-0363	Community Center	Revised Cost Revised Scope	2005	2006	2005	*	0 *20GO
	Construction of a new Community Center in downtown Overland Park. The project cost has been increased over the total included in the 05-09 CIP based on the current plans for the community center which includes: meeting rooms, exercise rooms, an indoor track, and an indoor pool. Previously, funding for an indoor pool was not included.					*	540,000 *PAYG
						*	0 *1/8STX
						*	0 *TEA21
						*	0 *ERF
						*	0 *OFED
					2006		16,385,000 20GO
							0 PAYG
							0 1/8STX
							0 TEA21
							0 ERF
						0 OFED	
	Project Total						<u>16,925,000</u>
PB-0876	Shawnee Mission P.W. Maintenance Car Wash Facility	New	2005	2006	2006		0 GO
	Replaces existing 19-year old brush-based car wash facility with a new brushless system. This project is new to the 06-10 CIP.						100,000 PAYG
							0 1/8STX
							0 SWU
							0 TEA21
							0 ERF
							0 OFED
	Project Total						<u>100,000</u>

*indicates project costs not included in plan totals

2006-2010 CAPITAL IMPROVEMENTS PROGRAM

Project Number	Project Description	2006-2010 PLAN				Plan 06-10
		Change From 2005-2009 CIP	Des. Year	Cons. Year	Fin. Year	
PUBLIC BUILDINGS						
PB-0692	Blue Valley P.W. Maintenance Pre-wash Facility Installs a facility for use by street sweepers and heavy equipment to satisfy NPDES requirements. Project is advanced one year from 05-09 CIP.	Revised Timing	2006	2007	2007	0 GO 0 PAYG 0 1/8STX 275,000 SWU 0 TEA21 0 ERF 0 OFED <hr/> 275,000
	Project Total					<hr/> 275,000
PB-0780	Parks Headquarters Parking Lot Renovation Reconstructs existing lot including addition of driving lanes, building aprons and storm water control. This project, new to the 06-10 CIP, will also serve as a new recycling center.	New	2006	2007	2007	0 GO 412,000 PAYG 0 1/8STX 0 SWU 0 TEA21 0 ERF 0 OFED <hr/> 412,000
	Project Total					<hr/> 412,000
PB-0847	Blue Valley P.W. Pole Barn Construction Constructs 3-sided covered structure for storage of heavy equipment currently stored outside. This project is new to the 06-10 CIP.	New	2006	2007	2007	0 GO 175,000 PAYG 0 1/8STX 0 SWU 0 TEA21 0 ERF 0 OFED <hr/> 175,000
	Project Total					<hr/> 175,000
PB-0846	Shawnee Mission P.W. Pole Barn Construction Constructs 3-sided covered structure for storage of heavy equipment currently stored outside. This project is new to the 06-10 CIP.	New	2007	2008	2008	0 GO 150,000 PAYG 0 1/8STX 0 SWU 0 TEA21 0 ERF 0 OFED <hr/> 150,000
	Project Total					<hr/> 150,000

*indicates project costs not included in plan totals

2006-2010 CAPITAL IMPROVEMENTS PROGRAM

Project Number	Project Description	2006-2010 PLAN				Plan 06-10
		Change From 2005-2009 CIP	Des. Year	Cons. Year	Fin. Year	
PUBLIC BUILDINGS						
SUBTOTAL -						- GO
PUBLIC BUILDINGS						16,385,000 20GO
						4,184,000 PAYG
						- EXCIS
						- 1/8STX
						- ESC
						- UESC
						- SA
						275,000 SWU
						- CTY
						- SSTX
						- OCITY
						- KDOT
						- ISTEA
						- TEA21
						- CDBG
						- OFED
						- ERF
						- RECV
						- GCR
						- SPR
						- PRIV
						- ODF
						- OFIN
						<u>20,844,000</u>

*indicates project costs not included in plan totals

2006-2010 CAPITAL IMPROVEMENTS PROGRAM

Project Number	Project Description	2006-2010 PLAN					Plan 06-10
		Change From 2005-2009 CIP	Des. Year	Cons. Year	Fin. Year		
PUBLIC EQUIPMENT							
PE-0486	Police Technology Mobile Data Terminals & Computer Aided Dispatch System; Software & Hardware <div style="border: 1px solid black; padding: 5px;">This project included the development, acquisition and deployment of the Mobile Data Terminals and Computer-aided dispatch project. Due to software interface issues between the live-scan fingerprint system and the Integraft records management system, outstanding purchase orders still exist. Funding has been revised to reflect current costs.</div>	Revised Costs	2000-2001	2000-2001	2000-2001	*	0 *GO
						*	580,292 *PAYG
						*	646,478 *LEAG
						*	0 *ERF
						*	465,830 *RECV
						*	2,382,564 *ODF
						*	400,000 *OFIN
					2003	*	0 *GO
						*	0 *PAYG
						*	0 *OFED
						*	393,214 *ERF
						*	0 *RECV
						*	0 *ODF
						*	11,245 *OFIN
	Project Total					*	<u>4,879,623</u>
PE-0200	Police Radio System Enhancements <div style="border: 1px solid black; padding: 5px;">Increases capacity and addresses dead-spots in radio coverage. Enhancements are scheduled to be completed by mid-2005.</div>	No Change	2002	2003	2003	*	0 *GO
						*	112,500 *PAYG
						*	0 *OFED
						*	0 *ERF
						*	0 *RECV
						*	0 *ODF
						*	0 *OFIN
	Project Total					*	<u>112,500</u>
PE-0462	2004 Technology <div style="border: 1px solid black; padding: 5px;">Annual funding for improvements to Information Technology networks, systems and hardware.</div>	No Change	2004	2004	2004	*	0 *GO
						*	0 *PAYG
						*	0 *OFED
						*	100,000 *ERF
						*	0 *RECV
						*	0 *ODF
						*	0 *OFIN
	Project Total					*	<u>100,000</u>

RECV = reduction in Police Operating Exp
 ODF = other debt financing (short-term)
 OFIN = Forfeiture Funds

[\\$170,000 in ERF was transferred to FE-0880]

[OFIN= Interest,]

*indicates project costs not included in plan totals

2006-2010 CAPITAL IMPROVEMENTS PROGRAM

Project Number	Project Description	2006-2010 PLAN					Plan 06-10
		Change From 2005-2009 CIP	Des. Year	Cons. Year	Fin. Year		
PUBLIC EQUIPMENT							
PE-0504	2004 Storm Siren Replacement Year four of a five-year project to systematically replace older storm sirens throughout the City.	No Change	2004	2004	2004	*	0 *GO
						*	0 *PAYG
						*	0 *OFED
						*	75,000 *ERF
						*	0 *RECV
						*	0 *ODF
						*	0 *OFIN
	Project Total					*	<u>75,000</u>
PE-0760	2005 Technology Annual funding for improvements to Information Technology networks, systems and hardware.	No Change	2005	2005	2005	*	0 *GO
						*	0 *PAYG
						*	0 *OFED
						*	100,000 *ERF
						*	0 *RECV
						*	0 *ODF
						*	0 *OFIN
	Project Total					*	<u>100,000</u>
PE-0505	2005 Storm Siren Replacement Year five of a five-year project to systematically replace older storm sirens throughout the City.	No Change	2005	2005	2005	*	0 *GO
						*	0 *PAYG
						*	0 *OFED
						*	160,000 *ERF
						*	0 *RECV
						*	0 *ODF
						*	0 *OFIN
	Project Total					*	<u>160,000</u>
PE-0488	2005 Police Technology Replacement and upgrade of Mobile Data Terminal & Computer-Aided Dispatch equipment based on the Police Department's estimates of replacement needs. Funding has been revised to reflect current costs.	Revised Cost Transferred \$115K to PE-0489	2005	2005	2005	*	0 *GO
						*	0 *PAYG
						*	0 *OFED
						*	919,000 *ERF
						*	0 *RECV
						*	510,000 *ODF
						*	0 *OFIN
	Project Total					*	<u>1,429,000</u>

*indicates project costs not included in plan totals

2006-2010 CAPITAL IMPROVEMENTS PROGRAM

Project Number	Project Description	2006-2010 PLAN					Plan 06-10
		Change From 2005-2009 CIP	Des. Year	Cons. Year	Fin. Year		
PUBLIC EQUIPMENT							
PE-0721	2005 Fiber Deployment Project funds installation of capacity to serve the City's fiber needs. Construction occurs during Everest's installation of its network within the City. Project is unchanged from the 05-09 plan.	No Change	2004	2005	2005	*	0 *GO
						*	50,000 *PAYG
						*	0 *OFED
						*	0 *ERF
						*	0 *RECV
						*	0 *ODF
						*	0 *OFIN
	Project Total					*	<u>50,000</u>
PE-0762	2005 Software Licenses Annual funding for renewal of software licensing as needed.	No Change	2005	2005	2005	*	0 *GO
						*	0 *PAYG
						*	0 *OFED
						*	100,000 *ERF
						*	0 *RECV
						*	0 *ODF
						*	0 *OFIN
	Project Total					*	<u>100,000</u>
PE-0867	Field Computers for Building Inspection Places computers in vehicles of building inspectors to provide enhanced customer service and increase efficiency. This project is new to the 06-10 CIP.	New	2005	2005	2005	*	0 *GO
						*	0 *PAYG
						*	0 *OFED
						*	150,000 *ERF
						*	0 *RECV
						*	0 *ODF
						*	0 *OFIN
	Project Total					*	<u>150,000</u>
PE-0868	Geographic Information System (GIS) Spatial Database Engine Enhanced data storage technology provides additional security and facilitates rapid retrieval and exchange of data. This project is new to the 06-10 CIP.	New	2005	2005	2005	*	0 *GO
						*	0 *PAYG
						*	0 *OFED
						*	50,000 *ERF
						*	0 *RECV
						*	0 *ODF
						*	0 *OFIN
	Project Total					*	<u>50,000</u>

*indicates project costs not included in plan totals

2006-2010 CAPITAL IMPROVEMENTS PROGRAM

Project Number	Project Description	2006-2010 PLAN					Plan 06-10
		Change From 2005-2009 CIP	Des. Year	Cons. Year	Fin. Year		
PUBLIC EQUIPMENT							
PE-0877	Financial Accounting System Upgrade The City's current financial system will no longer be supported by the vendor, necessitating an upgrade. System enhancements include faster responses times, better reporting capabilities and increased functionality. New project.	New	2004	2005	2005	*	0 *GO
						*	400,000 *PAYG
						*	0 *OFED
						*	0 *ERF
						*	0 *RECV
						*	0 *ODF
						*	0 *OFIN
	Project Total					*	<u>400,000</u>
PE-0467	2006 Technology Annual funding for improvements to Information Technology networks, systems and hardware.	No Change	2006	2006	2006		0 GO
							0 PAYG
							0 OFED
							180,000 ERF
							0 RECV
							0 ODF
							0 OFIN
	Project Total						<u>180,000</u>
PE-0489	2006 Police Technology Replacement and upgrade of Mobile Data Terminal & Computer Aided Dispatch equipment based on the Police Department's estimates of replacement needs. Funding revised based on updated costs.	Revised Cost \$115K transferred from PE-0488	2006	2006	2006		0 GO
							0 PAYG
							0 OFED
							190,600 ERF
							0 RECV
							0 ODF
							0 OFIN
	Project Total						<u>190,600</u>
PE-0722	2006 Fiber Deployment Project funds installation of capacity to serve the City's fiber needs. Construction occurs during Everest's installation of its network within the City. Project is unchanged from the 05-09 plan.	No Change	2005	2006	2006		0 GO
							50,000 PAYG
							0 OFED
							0 ERF
							0 RECV
							0 ODF
							0 OFIN
	Project Total						<u>50,000</u>

*indicates project costs not included in plan totals

2006-2010 CAPITAL IMPROVEMENTS PROGRAM

Project Number	Project Description	2006-2010 PLAN				Plan 06-10
		Change From 2005-2009 CIP	Des. Year	Cons. Year	Fin. Year	
PUBLIC EQUIPMENT						
PE-0763	2006 Software Licenses Annual funding for renewal of software licensing as needed.	No Change	2006	2006	2006	0 GO 0 PAYG 0 OFED 100,000 ERF 0 RECV 0 ODF 0 OFIN
	Project Total					<u>100,000</u>
PE-0865	Automated Vehicle Location System Installation of ALV system in Public Works vehicles to aid in deployment and tracking of vehicles during snow removal. The system will be integrated with the PD Intergraph system. This project is new to the 06-10 CIP.	New	2006	2006	2006	0 GO 175,000 PAYG 0 OFED 0 ERF 0 RECV 0 ODF 0 OFIN
	Project Total					<u>175,000</u>
PE-0469	2007 Technology Annual funding for improvements to Information Technology networks, systems and hardware.	No Change	2007	2007	2007	0 GO 0 PAYG 0 OFED 210,000 ERF 0 RECV 0 ODF 0 OFIN
	Project Total					<u>210,000</u>
PE-0681	2007 Police Technology Replacement and upgrade of Mobile Data Terminal & Computer Aided Dispatch equipment based on the Police Department's estimates of replacement needs. Funding revised based on updated cost and purchase of additional equipment.	Revised Cost Revised Scope	2007	2007	2007	0 GO 0 PAYG 0 OFED 516,800 ERF 0 RECV 0 ODF 0 OFIN
	Project Total					<u>516,800</u>

*indicates project costs not included in plan totals

2006-2010 CAPITAL IMPROVEMENTS PROGRAM

Project Number	Project Description	2006-2010 PLAN					Plan 06-10
		Change From 2005-2009 CIP	Des. Year	Cons. Year	Fin. Year		
PUBLIC EQUIPMENT							
PE-0723	2007 Fiber Deployment Project funds installation of capacity to serve the City's fiber needs. Construction occurs during Everest's installation of its network within the City. Project is unchanged from the 05-09 plan.	No Change	2006	2007	2007		0 GO 50,000 PAYG 0 OFED 0 ERF 0 RECV 0 ODF 0 OFIN
	Project Total						<u>50,000</u>
PE-0764	2007 Software Licenses Annual funding for renewal of software licensing as needed.	No Change	2007	2007	2007		0 GO 0 PAYG 0 OFED 100,000 ERF 0 RECV 0 ODF 0 OFIN
	Project Total						<u>100,000</u>
PE-0640	2008 Technology Annual funding for improvements to Information Technology network, systems and hardware.	No Change	2008	2008	2008		0 GO 0 PAYG 0 OFED 150,000 ERF 0 RECV 0 ODF 0 OFIN
	Project Total						<u>150,000</u>
PE-0642	2008 Software Licenses Annual funding for renewal of software licensing as needed.	No Change	2008	2008	2008		0 GO 200,000 PAYG 0 OFED 0 ERF 0 RECV 0 ODF 0 OFIN
	Project Total						<u>200,000</u>

*indicates project costs not included in plan totals

2006-2010 CAPITAL IMPROVEMENTS PROGRAM

Project Number	Project Description	2006-2010 PLAN				Plan 06-10
		Change From 2005-2009 CIP	Des. Year	Cons. Year	Fin. Year	
PUBLIC EQUIPMENT						
PE-0682	2008 Police Technology Replacement and upgrade of Mobile Data Terminal & Computer Aided Dispatch equipment based on the Police Department's estimates of replacement needs. Funding revised based on updated costs.	Revised Cost	2008	2008	2008	0 GO 0 PAYG 0 OFED 997,200 ERF 0 RECV 0 ODF 0 OFIN
	Project Total					<u>997,200</u>
PE-0738	2009 Technology Annual funding for improvements to Information Technology network, systems and hardware.	No Change	2009	2009	2009	0 GO 0 PAYG 0 OFED 100,000 ERF 0 RECV 0 ODF 0 OFIN
	Project Total					<u>100,000</u>
PE-0765	2009 Software Licenses Annual funding for renewal of software licensing as needed.	No Change	2009	2009	2009	0 GO 0 PAYG 0 OFED 100,000 ERF 0 RECV 0 ODF 0 OFIN
	Project Total					<u>100,000</u>
PE-0740	2009 Police Technology Replacement and upgrade of Mobile Data Terminal & Computer Aided Dispatch equipment based on the Police Department's estimates of replacement needs. Funding revised based on updated costs.	Revised Cost	2009	2009	2009	0 GO 743,800 PAYG 0 OFED 0 ERF 0 RECV 0 ODF 0 OFIN
	Project Total					<u>743,800</u>

*indicates project costs not included in plan totals

2006-2010 CAPITAL IMPROVEMENTS PROGRAM

Project Number	Project Description	2006-2010 PLAN					Plan 06-10
		Change From 2005-2009 CIP	Des. Year	Cons. Year	Fin. Year		
PUBLIC EQUIPMENT							
PE-0835	2010 Police Technology	New	2010	2010	2010	0	GO
	Replacement and upgrade of Mobile Data Terminal & Computer Aided Dispatch equipment based on the Police Department's estimates of replacement needs. This project is new in the 06-10 CIP.					516,800	PAYG
						0	OFED
						0	ERF
						0	RECV
						0	ODF
						0	OFIN
	Project Total					<u>516,800</u>	
PE-0842	2010 Technology	New	2010	2010	2010	0	GO
	Annual funding for improvements to Information Technology networks, systems and hardware. This project is new in the 06-10 CIP.					0	PAYG
						0	OFED
						100,000	ERF
						0	RECV
						0	ODF
						0	OFIN
	Project Total					<u>100,000</u>	
PE-0843	2010 Software Licenses	New	2010	2010	2010	0	GO
	Annual funding for renewal of software licensing as needed. This project is new in the 06-10 CIP.					0	PAYG
						0	OFED
						100,000	ERF
						0	RECV
						0	ODF
						0	OFIN
	Project Total					<u>100,000</u>	

*indicates project costs not included in plan totals

2006-2010 CAPITAL IMPROVEMENTS PROGRAM

Project Number	Project Description	2006-2010 PLAN				Plan 06-10
		Change From 2005-2009 CIP	Des. Year	Cons. Year	Fin. Year	
PUBLIC EQUIPMENT						
SUBTOTAL						
PUBLIC EQUIPMENT						
						- GO
						- 20GO
					1,735,600	PAYG
						- EXCIS
						- 1/8STX
						- ESC
						- UESC
						- SA
						- SWU
						- CTY
						- SSTX
						- OCITY
						- KDOT
						- ISTEА
						- TEA21
						- CDBG
						- OFED
					2,844,600	ERF
						- RECV
						- GCR
						- SPR
						- PRIV
						- ODF
						- OFIN
					<u>4,580,200</u>	

*indicates project costs not included in plan totals

2006-2010 CAPITAL IMPROVEMENTS PROGRAM

Project Number	Project Description	2006-2010 PLAN				
		Change From 2005-2009 CIP	Des. Year	Cons. Year	Fin. Year	Plan 06-10
PARKS & RECREATION: Public Art						
PR-0649	2004 Public Art Arts commission has recommended a sculpture at 80th and Santa Fe. Installation is expected to occur in 2006.	No Change	2004	2004	2004	* 25,000 *PAYG * 25,000 *PRIV * 0 *OFIN
	Project Total					* <u>50,000</u>
PR-0752	2005 Public Art Funding for permanent art acquisition. The City will match up to \$50,000 of funding raised by Arts Commission.	No Change	2005	2005	2005	* 50,000 *PAYG * 50,000 *PRIV * 0 *OFIN
	Project Total					* <u>100,000</u>
PR-0753	2006 Public Art Funding for permanent art acquisition. The City will match up to \$50,000 of funding raised by Arts Commission.	No Change	2006	2006	2006	50,000 PAYG 50,000 PRIV 0 OFIN
	Project Total					<u>100,000</u>
PR-0754	2007 Public Art Funding for permanent art acquisition. The City will match up to \$50,000 of funding raised by Arts Commission.	No Change	2007	2007	2007	50,000 PAYG 50,000 PRIV 0 OFIN
	Project Total					<u>100,000</u>
PR-0755	2008 Public Art Funding for permanent art acquisition. The City will match up to \$50,000 of funding raised by Arts Commission.	No Change	2008	2008	2008	50,000 PAYG 50,000 PRIV 0 OFIN
	Project Total					<u>100,000</u>
PR-0756	2009 Public Art Funding for permanent art acquisition. The City will match up to \$50,000 of funding raised by Arts Commission.	No Change	2009	2009	2009	50,000 PAYG 50,000 PRIV 0 OFIN
	Project Total					<u>100,000</u>
PR-0836	2010 Public Art Funding for permanent art acquisition. The City will match up to \$50,000 of funding raised by Arts Commission. New project for the 06-10 CIP.	New	2010	2010	2010	50,000 PAYG 50,000 PRIV 0 OFIN
	Project Total					<u>100,000</u>

*indicates project costs not included in plan totals

2006-2010 CAPITAL IMPROVEMENTS PROGRAM

<u>Project Number</u>	<u>Project Description</u>	<u>2006-2010 PLAN</u>				<u>Plan 06-10</u>
		<u>Change From 2005-2009 CIP</u>	<u>Des. Year</u>	<u>Cons. Year</u>	<u>Fin. Year</u>	
PARKS & RECREATION: Public Art						
SUBTOTAL						
	PARKS & RECREATION: Public Art					- GO
						- 20GO
					250,000	PAYG
						- EXCIS
						- 1/8STX
						- ESC
						- UESC
						- SA
						- SWU
						- CTY
						- SSTX
						- OCITY
						- KDOT
						- ISTE A
						- TEA21
						- CDBG
						- OFED
						- ERF
						- RECV
						- GCR
						- SPR
					250,000	PRIV
						- ODF
						- OFIN
					<u>500,000</u>	

*indicates project costs not included in plan totals

2006-2010 CAPITAL IMPROVEMENTS PROGRAM

Project Number	Project Description	2006-2010 PLAN					Plan 06-10
		Change From 2005-2009 CIP	Des. Year	Cons. Year	Fin. Year		
PARKS & RECREATION: Greenway Linkages							
PR-0021	2004 Greenway Linkages Ongoing construction of Greenway Linkage trail system.	No Change	2004	2004	2004	*	13,234 *PAYG
						*	0 *KDOT
						*	16,900 *SPR
	Project Total					*	<u>30,134</u>
PR-0654	135th Street Greenway Linkage Construction of greenway linkage at 135th Street from Nieman to Switzer.	No Change	2004	2004	2004	*	0 *PAYG
						*	159,896 *KDOT
		[OFED = CMAQ Funds]				*	64,974 *SPR
	Project Total					*	<u>224,870</u>
PR-0656	110th Street Greenway Linkage Construction of greenway linkage at 110th Street from Glenwood to Nall.	No Change	2004	2004	2004	*	46,766 *PAYG
						*	107,064 *KDOT
		[OFED = CMAQ Funds]				*	0 *SPR
	Project Total					*	<u>153,830</u>
PR-0655	133rd Street Greenway Linkage Construction of greenway linkage at 133rd Street from US 69 to Antioch.	No Change	2004	2005	2005	*	0 *PAYG
						*	97,680 *KDOT
		[OFED = CMAQ Funds]				*	44,420 *SPR
	Project Total					*	<u>142,100</u>
PR-0420	2005 Greenway Linkages Ongoing construction of greenway linkage trail system.	No Change	2005	2005	2005	*	0 *PAYG
						*	0 *KDOT
						*	15,580 *SPR
	Project Total					*	<u>15,580</u>
PR-0826	Tomahawk Creek Bike/Hike Trail Construction of 1.5 miles of bike/hike trail along Tomahawk Creek from Antioch to Metcalf. New project.	New	2004	2005	2005	*	0 *PAYG
						*	126,400 *CTY
						*	482,100 *KDOT
						*	120,000 *SPR
	Project Total					*	<u>728,500</u>
PR-0430	2006 Greenway Linkages Ongoing construction of greenway linkage trail system.	No Change	2006	2006	2006		0 PAYG
							0 OFED
							60,000 SPR
	Project Total						<u>60,000</u>

*indicates project costs not included in plan totals

2006-2010 CAPITAL IMPROVEMENTS PROGRAM

Project Number	Project Description	2006-2010 PLAN				Plan 06-10
		Change From 2005-2009 CIP	Des. Year	Cons. Year	Fin. Year	
PARKS & RECREATION: Greenway Linkages						
PR-0431	2007 Greenway Linkages	No Change	2007	2007	2007	0 PAYG
	Ongoing construction of greenway linkage trail system.					0 OFED
	Project Total					60,000 SPR
						<u>60,000</u>
PR-0627	2008 Greenway Linkages	No Change	2008	2008	2008	0 PAYG
	Ongoing construction of greenway linkage trail system.					0 OFED
	Project Total					60,000 SPR
						<u>60,000</u>
PR-0728	2009 Greenway Linkages	No Change	2009	2009	2009	0 PAYG
	Ongoing construction of greenway linkage trail system.					0 OFED
	Project Total					60,000 SPR
						<u>60,000</u>
SUBTOTAL						
PARKS & RECREATION: Greenway Linkages						
						- GO
						- 20GO
						- PAYG
						- EXCIS
						- 1/8STX
						- ESC
						- UESC
						- SA
						- SWU
						- CTY
						- SSTX
						- OCITY
						- KDOT
						- ISTE A
						- TEA21
						- CDBG
						- OFED
						- ERF
						- RECV
						- GCR
						240,000 SPR
						- PRIV
						- ODF
						- OFIN
						<u><u>240,000</u></u>

*indicates project costs not included in plan totals

2006-2010 CAPITAL IMPROVEMENTS PROGRAM

Project Number	Project Description	2006-2010 PLAN					Plan 06-10
		Change From 2005-2009 CIP	Des. Year	Cons. Year	Fin. Year		
PARKS & RECREATION: Arboretum & Kemper Farm							
PR-0046	2004 Small Improvement Projects	No Change	2004	2004	2004	*	0 *GO
	Construction of one or two specific feature areas at the Arboretum or Kemper Farm - some in cooperation with service and garden clubs or other private donors. (Operating Costs: \$35,000/yr)					*	0 *PAYG
						*	100,000 *SPR
						*	0 *PRIV
						*	0 *OFIN
						*	
		Project Total					*
PR-0504	Arboretum Maintenance Facility	No Change	2003	2005	2005	*	0 *GO
	Relocate old turf care center building from golf course and reconstruct at Arboretum. Funding is included for new floor, utilities, restrooms, etc. (Operating Costs - \$24,000/yr)					*	400,000 *PAYG
						*	0 *OFIN
						*	0 *PRIV
						*	0 *OFIN
		Project Total					*
PR-0047	2005 Small Improvement Projects	No Change	2005	2005	2005	*	0 *GO
	Construction of one or two specific feature areas at the Arboretum or Kemper Farm - some in cooperation with service and garden clubs or other private donors. (Operating Costs: \$35,000/yr)					*	0 *PAYG
						*	100,000 *SPR
						*	0 *PRIV
						*	0 *OFIN
		Project Total					*
PR-0048	2006 Small Improvement Projects	No Change	2006	2006	2006		0 GO
	Construction of one or two specific feature areas at the Arboretum or Kemper Farm - some in cooperation with service and garden clubs or other private donors. (Operating Costs: \$35,000/yr)						0 PAYG
							100,000 SPR
							0 PRIV
							0 OFIN
		Project Total					
PR-0862	Botanical Garden Water Rill and Walkways	New	2006	2006	2006		0 GO
	Design and construction of water rill and connecting walkways in accordance with Arboretum Master Plan. New project for 06-10 CIP. (Operating Costs: \$30,000/yr)						300,000 PAYG
							0 SPR
							0 PRIV
							0 OFIN
		Project Total					

*indicates project costs not included in plan totals

2006-2010 CAPITAL IMPROVEMENTS PROGRAM

Project Number	Project Description	2006-2010 PLAN				Plan 06-10
		Change From 2005-2009 CIP	Des. Year	Cons. Year	Fin. Year	
PARKS & RECREATION: Arboretum & Kemper Farm						
PR-0049	2007 Small Improvement Projects	No Change	2007	2007	2007	0 GO
	<div style="border: 1px solid black; padding: 5px;"> Construction of one or two specific feature areas at the Arboretum or Kemper Farm - some in cooperation with service and garden clubs or other private donors. (Operating Costs: \$35,000/yr) </div>					0 PAYG
						100,000 SPR
						0 PRIV
						0 OFIN
	Project Total					<u>100,000</u>
PR-0625	2008 Small Improvement Projects	No Change	2008	2008	2008	0 GO
	<div style="border: 1px solid black; padding: 5px;"> Construction of one or two specific feature areas at the Arboretum or Kemper Farm - some in cooperation with service and garden clubs or other private donors. (Operating Costs: \$25,000/yr) </div>					0 PAYG
						100,000 SPR
						0 PRIV
						0 OFIN
	Project Total					<u>100,000</u>
PR-0729	2009 Small Improvement Projects	No Change	2009	2009	2009	0 GO
	<div style="border: 1px solid black; padding: 5px;"> Construction of one or two specific feature areas at the Arboretum or Kemper Farm - some in cooperation with service and garden clubs or other private donors. (Operating Costs: \$25,000/yr) </div>					0 PAYG
						100,000 SPR
						0 PRIV
						0 OFIN
	Project Total					<u>100,000</u>
PR-0837	2010 Small Improvement Projects	New	2010	2010	2010	0 GO
	<div style="border: 1px solid black; padding: 5px;"> Construction of one or two specific feature areas at the Arboretum or Kemper Farm - some in cooperation with service and garden clubs or other private donors. New project for the 06-10 CIP. (Operating Costs: \$25,000/yr) </div>					0 PAYG
						100,000 SPR
						0 PRIV
						0 OFIN
	Project Total					<u>100,000</u>

*indicates project costs not included in plan totals

2006-2010 CAPITAL IMPROVEMENTS PROGRAM

Project Number	Project Description	2006-2010 PLAN				Plan 06-10
		Change From 2005-2009 CIP	Des. Year	Cons. Year	Fin. Year	
PARKS & RECREATION: Arboretum & Kemper Farm						
SUBTOTAL						
	PARKS & RECREATION: Arboretum & Kemper Farm					- GO
						- 20GO
					300,000	PAYG
						- EXCIS
						- 1/8STX
						- ESC
						- UESC
						- SA
						- SWU
						- CTY
						- SSTX
						- OCITY
						- KDOT
						- ISTE A
						- TEA21
						- CDBG
						- OFED
						- ERF
						- RECV
						- GCR
					500,000	SPR
						- PRIV
						- ODF
						- OFIN
						<u>800,000</u>

*indicates project costs not included in plan totals

2006-2010 CAPITAL IMPROVEMENTS PROGRAM

Project Number	Project Description	2006-2010 PLAN					Plan 06-10
		Change From 2005-2009 CIP	Des. Year	Cons. Year	Fin. Year		
PARKS & RECREATION: Park Improvements							
PR-0070	2003 Park Improvements Construction of park improvements for projects recommended by the Citizens' Advisory Council on P&R.	No Change	2003	2003	2003	*	706,000 *SPR
	Project Total					*	<u>706,000</u>
PR-0071	2004 Park Improvements Construction of park improvements for projects recommended by the Citizens' Advisory Council on P&R. Funding has been transferred from this project to PR-0826 (Tomahawk Creek Bike/Hike Trail).	Revised Cost	2004	2004	2004	*	608,000 *SPR
	Project Total	Funding transferred to PR-0826				*	<u>608,000</u>
PR-0422	2005 Park Improvements Construction of park improvements for projects recommended by the Citizens' Advisory Council on P&R. Revised funding to reflect amount of SPR funding available.	Revised Cost	2005	2005	2005	*	1,554,000 *SPR
	Project Total					*	<u>1,554,000</u>
PR-0423	2006 Park Improvements Construction of park improvements for projects recommended by the Citizens' Advisory Council on P&R.	Revised Cost	2006	2006	2006		800,000 SPR
	Project Total						<u>800,000</u>
PR-0424	2007 Park Improvements Construction of park improvements for projects recommended by the Citizens' Advisory Council on P&R.	No Change	2007	2007	2007		625,000 SPR
	Project Total						<u>625,000</u>
PR-0628	2008 Park Improvements Construction of park improvements for projects recommended by the Citizens' Advisory Council on P&R.	No Change	2008	2008	2008		625,000 SPR
	Project Total						<u>625,000</u>

*indicates project costs not included in plan totals

2006-2010 CAPITAL IMPROVEMENTS PROGRAM

Project Number	Project Description	2006-2010 PLAN					Plan	
		Change From 2005-2009 CIP	Des. Year	Cons. Year	Fin. Year	06-10		
PARKS & RECREATION: Park Improvements								
PR-0730	2009 Park Improvements Construction of park improvements for projects recommended by the Citizens' Advisory Council on P&R.	No Change	2009	2009	2009	625,000	SPR	
	Project Total					<u>625,000</u>		
PR-0838	2010 Park Improvements Construction of park improvements for projects recommended by the Citizens' Advisory Council on P&R. New project for 06-10 CIP.	New	2010	2010	2010	700,000	SPR	
	Project Total					<u>700,000</u>		
SUBTOTAL								
PARKS & RECREATION: Park Improvements								
						-	GO	
						-	20GO	
						-	PAYG	
						-	EXCIS	
						-	1/8STX	
						-	ESC	
						-	UESC	
						-	SA	
						-	SWU	
						-	CTY	
						-	SSTX	
						-	OCITY	
						-	KDOT	
						-	ISTEA	
						-	TEA21	
						-	CDBG	
						-	OFED	
						-	ERF	
						-	RECV	
						-	GCR	
						3,375,000	SPR	
						-	PRIV	
						-	ODF	
						-	OFIN	
						<u>3,375,000</u>		

*indicates project costs not included in plan totals

2006-2010 CAPITAL IMPROVEMENTS PROGRAM

Project Number	Project Description	2006-2010 PLAN				Plan 06-10
		Change From 2005-2009 CIP	Des. Year	Cons. Year	Fin. Year	
PARKS & RECREATION: Park Facility Improvements						
PR-0445	Deanna Rose Children's Farmstead Construction of new entrance and administration building on the north side of the expansion area. City improvements will be made as foundation monies are used to provide buildings.	No Change	2007	2007	2007	1,330,000 GO 0 PAYG 0 OFIN 0 PRIV
	Project Total					<u>1,330,000</u>
PR-0007	Swimming Pool Construction of swimming pool at 151st Street and England. (Operating cost: \$160,000/year)	No Change	2007	2008	2008	3,480,000 GO 0 PAYG 0 OFIN 0 PRIV
	Project Total					<u>3,480,000</u>
SUBTOTAL						
PARKS & RECREATION: Park Facility Improvements						4,810,000 GO - 20GO - PAYG - EXCIS - 1/8STX - ESC - UESC - SA - SWU - CTY - SSTX - OCITY - KDOT - ISTE - TEA21 - CDBG - OFED - ERF - RECV - GCR - SPR - PRIV - ODF - OFIN
						<u>4,810,000</u>

*indicates project costs not included in plan totals

2006-2010 CAPITAL IMPROVEMENTS PROGRAM

<u>Project Number</u>	<u>Project Description</u>	<u>2006-2010 PLAN</u>				<u>Plan 06-10</u>
		<u>Change From 2005-2009 CIP</u>	<u>Des. Year</u>	<u>Cons. Year</u>	<u>Fin. Year</u>	
PARKS & RECREATION - ALL CATEGORIES						
SUBTOTAL						4,810,000 GO
PARKS & RECREATION - ALL CATEGORIES						- 20GO
						550,000 PAYG
						- EXCIS
						- 1/8STX
						- ESC
						- UESC
						- SA
						- SWU
						- CTY
						- SSTX
						- OCITY
						- KDOT
						- ISTE A
						- TEA21
						- CDBG
						- OFED
						- ERF
						- RECV
						- GCR
						4,115,000 SPR
						250,000 PRIV
						- ODF
						- OFIN
						<u>9,725,000</u> TOTAL

*indicates project costs not included in plan totals

2006-2010 CAPITAL IMPROVEMENTS PROGRAM

Project Number	Project Description	2006-2010 PLAN					Plan 06-10
		Change From 2005-2009 CIP	Des. Year	Cons. Year	Fin. Year		
STREETLIGHTING							
SL-0025	2003 Residential Streetlighting Installation of streetlighting due to petitions by residents. Project areas include: Lowell and 99th, Hadley and 89th, 90th and Woodward.	No Change	2003	2003	2003	*	200,000 *PAYG
						*	0 *OCTY
	Project Total					*	<u>200,000</u>
SL-0557	2003 Thoroughfare Streetlighting Funding combined with 2004 funding. Project includes design and installation of lighting on 75th from Antioch to Metcalf.	No Change	2002	2003	2003	*	160,000 *PAYG
						*	0 *OCTY
	Project Total					*	<u>160,000</u>
SL-0558	2004 Thoroughfare Streetlighting Funding combined with 2003 funding. Project includes design and installation of lighting on 75th from Antioch to Metcalf.	No Change	2003	2004	2004	*	22,000 *PAYG
						*	0 *OCTY
	Project Total					*	<u>22,000</u>
SL-0411	2005 Residential Streetlighting Installation of streetlighting due to petitions by residents. Areas include: Shawnee Lane Cul-de-sac, Reeder & 109th, and 99th - Quivira to Bluejacket	No Change	2005	2005	2005	*	100,000 *PAYG
						*	0 *OCTY
	Project Total					*	<u>100,000</u>
SL-0434	2005 Collector Streetlighting Replacement of lighting on 79th St. from Antioch to Frontage Rd.	No Change	2005	2005	2005	*	100,000 *PAYG
						*	0 *OCTY
	Project Total					*	<u>100,000</u>
SL-0559	2005 Thoroughfare Streetlighting Replacement of lighting on Antioch Rd. from 75th St. to 85th St. Funding change reflects addition of CARS funding recently received.	Revised Cost Revised Funding	2004	2005	2005	*	160,000 *PAYG
						*	86,000 *CTY
	Project Total					*	<u>246,000</u>

*indicates project costs not included in plan totals

2006-2010 CAPITAL IMPROVEMENTS PROGRAM

Project Number	Project Description	2006-2010 PLAN				Plan 06-10
		Change From 2005-2009 CIP	Des. Year	Cons. Year	Fin. Year	
STREETLIGHTING						
SL-0506	2006 Residential Streetlighting Installation of streetlighting due to petitions by residents.	No Change	2006	2006	2006	100,000 PAYG 0 OCTY
	Project Total					<u>100,000</u>
SL-0507	2006 Collector Streetlighting Replacement or installation of streetlighting on collectors.	No Change	2006	2006	2006	100,000 PAYG 0 OCTY
	Project Total					<u>100,000</u>
SL-0560	2006 Thoroughfare Streetlighting Replacement of lighting on Antioch Rd. from 87th St. to 95th St. Additional funding required due to additional distance needed (over the standard mile) to tie two existing systems together.	Revised Cost Revised Funding	2005	2006	2006	159,000 PAYG 0 OCTY 101,000 CTY
	Project Total					<u>260,000</u>
SL-0541	2007 Residential Streetlighting Installation of streetlighting due to petitions by residents.	No Change	2006	2007	2007	100,000 PAYG 0 OCTY
	Project Total					<u>100,000</u>
SL-0542	2007 Collector Streetlighting Replacement or installation of streetlighting on collectors.	No Change	2006	2007	2007	100,000 PAYG 0 OCTY
	Project Total					<u>100,000</u>
SL-0561	2007 Thoroughfare Streetlighting Replacement or installation of streetlighting on thoroughfares.	No Change	2006	2007	2007	160,000 PAYG 0 OCTY
	Project Total					<u>160,000</u>
SL-0598	2008 Residential Streetlighting Installation of streetlighting due to petitions by residents.	No Change	2007	2008	2008	110,000 PAYG 0 OCTY
	Project Total					<u>110,000</u>

*indicates project costs not included in plan totals

2006-2010 CAPITAL IMPROVEMENTS PROGRAM

Project Number	Project Description	2006-2010 PLAN					Plan 06-10
		Change From 2005-2009 CIP	Des. Year	Cons. Year	Fin. Year		
STREETLIGHTING							
SL-0599	2008 Collector Streetlighting Replacement or installation of streetlighting on collectors.	No Change	2007	2008	2008	110,000	PAYG 0 OCTY
	Project Total					<u>110,000</u>	
SL-0616	2008 Thoroughfare Streetlighting Replacement or installation of streetlighting on thoroughfares.	No Change	2007	2008	2008	160,000	PAYG 0 OCTY
	Project Total					<u>160,000</u>	
SL-0693	2009 Residential Streetlighting Installation of streetlighting due to petitions by residents.	No Change	2008	2009	2009	110,000	PAYG 0 OCTY
	Project Total					<u>110,000</u>	
SL-0694	2009 Collector Streetlighting Replacement or installation of streetlighting on collectors.	No Change	2008	2009	2009	110,000	PAYG 0 OCTY
	Project Total					<u>110,000</u>	
SL-0695	2009 Thoroughfare Streetlighting Replacement or installation of streetlighting on thoroughfares.	No Change	2008	2009	2009	160,000	PAYG 0 OCTY
	Project Total					<u>160,000</u>	
SL-0829	2010 Residential Streetlighting Installation of streetlighting due to petitions by residents. New project for the 06-10 CIP.	New	2009	2010	2010	110,000	PAYG 0 OCTY
	Project Total					<u>110,000</u>	
SL-0830	2010 Collector Streetlighting Replacement or installation of streetlighting on collectors. New project for the 06-10 CIP.	New	2009	2010	2010	110,000	PAYG 0 OCTY
	Project Total					<u>110,000</u>	

*indicates project costs not included in plan totals

2006-2010 CAPITAL IMPROVEMENTS PROGRAM

Project Number	Project Description	2006-2010 PLAN				Plan 06-10
		Change From 2005-2009 CIP	Des. Year	Cons. Year	Fin. Year	
STREETLIGHTING						
SL-0831	2010 Thoroughfare Streetlighting	New	2009	2010	2010	160,000 PAYG
	Replacement or installation of streetlighting on thoroughfares. New project for the 06-10 CIP.					0 OCTY
	Project Total					<u>160,000</u>
SUBTOTAL						
STREETLIGHTING						
						- GO
						- 20GO
						1,859,000 PAYG
						- EXCIS
						- 1/8STX
						- ESC
						- UESC
						- SA
						- SWU
						101,000 CTY
						- SSTX
						- OCTY
						- KDOT
						- ISTE A
						- TEA21
						- CDBG
						- OFED
						- ERF
						- RECV
						- GCR
						- SPR
						- PRIV
						- ODF
						- OFIN
						<u><u>1,960,000</u></u>

*indicates project costs not included in plan totals

2006-2010 CAPITAL IMPROVEMENTS PROGRAM

Project Number	Project Description	2006-2010 PLAN					Plan 06-10
		Change From 2005-2009 CIP	Des. Year	Cons. Year	Fin. Year		
RESIDENTIAL STREET PROGRAM							
SR-0028	2004 Residential Street Program Improvements to eligible residential streets, partially funded by the 1/8-cent sales tax for street improvements. The 2004 program includes streets in the Arrowhead Trails and Southmoor Gardens neighborhoods. Revised funding to reflect the availability of City funds.	Revised Funding	2003	2004	2003	*	0 *GO
						*	0 *PAYG
						*	0 *1/8STX
						*	0 *CTY
						*	500,000 *SSTX
						*	0 *CDBG
					2004	*	813,000 *GO
						*	0 *PAYG
						*	2,062,000 *1/8STX
						*	0 *CTY
						*	700,000 *SSTX
						*	0 *CDBG
	Project Total					*	<u>4,075,000</u>
SR-0670	2004 Residential Street Program Community Development Block Grant (CDBG) portion of the Residential Street Program. Areas determined by CDBG Citizens Advisory Committee.	Revised Cost Revised Funding	2003	2004	2004	*	0 *GO
						*	0 *PAYG
						*	141,100 *1/8STX
						*	0 *CTY
						*	0 *SSTX
						*	528,900 *CDBG
	Project Total					*	<u>670,000</u>
SR-0029	2005 Residential Street Program Improvements to eligible residential streets, partially funded by the 1/8-cent sales tax for street improvements. The 2005 program includes streets in the historic Overland Park and North Park neighborhoods and Conservation Area 18A. Revised funding to reflect the availability of City funds.	Revised Funding Revised Cost	2004	2005	2004	*	999,000 *GO
						*	0 *PAYG
						*	0 *1/8STX
						*	0 *CTY
						*	0 *SSTX
						*	0 *CDBG
					2005	*	0 *GO
						*	0 *PAYG
						*	1,975,000 *1/8STX
						*	0 *CTY
						*	1,591,000 *SSTX
						*	0 *CDBG
	Project Total					*	<u>4,565,000</u>

*indicates project costs not included in plan totals

2006-2010 CAPITAL IMPROVEMENTS PROGRAM

Project Number	Project Description	2006-2010 PLAN				
		Change From 2005-2009 CIP	Des. Year	Cons. Year	Fin. Year	Plan 06-10
RESIDENTIAL STREET PROGRAM						
SR-0742	2005 CDBG Program Community Development Block Grant (CDBG) portion of the Residential Street Program. Areas determined by CDBG Citizens Advisory Committee. Revised cost to reflect available funds.	Revised Cost Revised Scope	2004	2005	2005	* * * * * * * <u>1,090,000</u>
	Project Total					
SR-0030	2006 Residential Street Program Improvements to eligible residential streets, partially funded by the 1/8-cent sales tax for street improvements. The 2006 program includes streets in the Grantioch neighborhood and Conservation Areas 12,16 and 21.	Revised Cost	2005	2006	2006	1,000,000 GO 0 PAYG 2,905,000 1/8STX 0 CTY 1,500,000 SSTX 0 CDBG <u>5,405,000</u>
	Project Total					
SR-0743	2006 CDBG Program Community Development Block Grant (CDBG) portion of the Residential Street Program. Areas determined by CDBG Citizens Advisory Committee.	No Change	2005	2006	2006	0 GO 0 PAYG 0 1/8STX 0 CTY 0 SSTX 500,000 CDBG <u>500,000</u>
	Project Total					
SR-0031	2007 Residential Street Program Improvements to eligible residential streets, partially funded by the 1/8-cent sales tax for street improvements. The 2007 program includes streets in the South Lake and Westbrooke neighborhoods.	No Change	2006	2007	2007	1,000,000 GO 0 PAYG 2,580,000 1/8STX 0 CTY 0 SSTX 0 CDBG <u>3,580,000</u>
	Project Total					
SR-0744	2007 CDBG Program Community Development Block Grant (CDBG) portion of the Residential Street Program. Areas determined by CDBG Citizens Advisory Committee.	No Change	2006	2007	2007	0 GO 0 PAYG 0 1/8STX 0 CTY 0 SSTX 500,000 CDBG <u>500,000</u>
	Project Total					

*indicates project costs not included in plan totals

2006-2010 CAPITAL IMPROVEMENTS PROGRAM

Project Number	Project Description	2006-2010 PLAN					Plan 06-10
		Change From 2005-2009 CIP	Des. Year	Cons. Year	Fin. Year		
RESIDENTIAL STREET PROGRAM							
SR-0620	2008 Residential Street Program Improvements to eligible residential streets, partially funded by the 1/8-cent sales tax for street improvements. The 2008 program includes streets in the Santa Fe Hills neighborhood and Conservation Areas 13 and 26.	No Change	2007	2008	2008	1,000,000	GO
						0	PAYG
						2,580,000	1/8STX
						0	CTY
						0	SSTX
						0	CDBG
	Project Total					<u>3,580,000</u>	
SR-0745	2008 CDBG Program Community Development Block Grant (CDBG) portion of the Residential Street Program. Areas determined by CDBG Citizens Advisory Committee.	No Change	2007	2008	2008		0 GO
							0 PAYG
							0 1/8STX
							0 CTY
							0 SSTX
						500,000	CDBG
	Project Total					<u>500,000</u>	
SR-0696	2009 Residential Street Program Improvements to eligible residential streets, partially funded by the 1/8-cent sales tax for street improvements. The 2009 program includes streets in the North Overland Park Hills and Cunningham Heights neighborhoods and Conservation Area 8. Funding revised to reflect available funds.	Revised Funding Revised Cost	2008	2009	2009	500,000	GO
						0	PAYG
						3,700,000	1/8STX
						0	CTY
						0	SSTX
						0	CDBG
	Project Total					<u>4,200,000</u>	
SR-0746	2009 CDBG Program Community Development Block Grant (CDBG) portion of the Residential Street Program. Areas determined by CDBG Citizens Advisory Committee.	No Change	2008	2009	2009		0 GO
							0 PAYG
							0 1/8STX
							0 CTY
							0 SSTX
						500,000	CDBG
	Project Total					<u>500,000</u>	

*indicates project costs not included in plan totals

2006-2010 CAPITAL IMPROVEMENTS PROGRAM

Project Number	Project Description	2006-2010 PLAN				Plan 06-10
		Change From 2005-2009 CIP	Des. Year	Cons. Year	Fin. Year	
RESIDENTIAL STREET PROGRAM						
	SUBTOTAL					3,500,000 GO
	RESIDENTIAL STREET PROGRAM					- 20GO
						- PAYG
						- EXCIS
						11,765,000 1/8STX
						- ESC
						- UESC
						- SA
						- SWU
						- CTY
						1,500,000 SSTX
						- OCITY
						- KDOT
						- ISTE A
						- TEA21
						2,000,000 CDBG
						- OFED
						- ERF
						- RECV
						- GCR
						- SPR
						- PRIV
						- ODF
						- OFIN
						<u>18,765,000</u>

*indicates project costs not included in plan totals

2006-2010 CAPITAL IMPROVEMENTS PROGRAM

Project Number	Project Description	2006-2010 PLAN					Plan 06-10	
		Change From 2005-2009 CIP	Des. Year	Cons. Year	Fin. Year			
STREET IMPROVEMENTS								
ST-0514D	Design - 135th & US 69 Ramp Improvements	Revised Cost	2001	2004	2002	*	775,896 *GO	
	Design for improvements to northbound ramp, and purchase of right-of-way in the northeast quadrant. Design occurred in 2001-2002, however design work is still occurring. Cost have increased due to additional design and change in scope.					*	125,887 *PAYG	
						*	0 *ESC	
						*	206,415 *UESC	
						*	0 *SWU	
						*	0 *CTY	
						*	0 *SSTX	
						*	0 *KDOT	
						*	0 *TEA21	
			[OFIN= Interest Earned]				*	10,534 *OFIN
		Project Total					*	<u>1,118,732</u>
ST-0023	119th & Overland Pkwy	No Change	2000	2002 - 2003	2003	*	1,583,490 *GO	
	Intersection improvements, including widening and improving southbound Overland Parkway off-ramp at 119th. Construction was completed in 2003, however final billing from KDOT has not been received.					*	0 *PAYG	
						*	7,021 *ESC	
						*	0 *UESC	
						*	0 *SWU	
			[2001 CARS]			*	643,000 *CTY	
						*	0 *SSTX	
						*	0 *KDOT	
						*	350,000 *TEA21	
						*	0 *OFIN	
		Project Total					*	<u>2,583,511</u>
ST-0634	Santa Fe Drive Improvements	No Change	2003	2004	2003	*	0 *GO	
	Improvements on Santa Fe from 80th to 83rd, including roundabout at Conser and Santa Fe. Work will be complete in the fall of 2004.					*	135,000 *PAYG	
						*	0 *1/8STX	
						*	0 *ESC	
						*	0 *UESC	
						*	0 *SWU	
						*	0 *CTY	
						*	0 *SSTX	
						*	0 *KDOT	
						*	0 *TEA21	
						*	0 *OFIN	
					2004	*	1,372,100 *GO	
						*	0 *PAYG	
						*	0 *1/8STX	
						*	0 *ESC	
						*	0 *UESC	
					*	0 *SWU		
					*	0 *CTY		
					*	0 *SSTX		
					*	0 *KDOT		
					*	0 *TEA21		
					*	0 *OFIN		
		[OFIN=				*	0 *SSTX	
		\$1,358,000 2004 PW Maint. Funds;				*	0 *KDOT	
		\$153,900 2004 SWU Maint. Funds]				*	0 *TEA21	
					*	1,511,900 *OFIN		
	Project Total					*	<u>3,019,000</u>	

*indicates project costs not included in plan totals

2006-2010 CAPITAL IMPROVEMENTS PROGRAM

Project Number	Project Description	2006-2010 PLAN					Plan 06-10	
		Change From 2005-2009 CIP	Des. Year	Cons. Year	Fin. Year			
STREET IMPROVEMENTS								
ST-0660	159th Street: Lamar to Nall	No Change	2003	2004	2004	*	0 *GO	
	Construction of turn lanes at Lamar & Horton to serve traffic near Blue Valley High School. Uses School Sales Tax Funds. Project is unchanged from the 05-09 adopted CIP. Construction was completed in October, 2004.					*	0 *PAYG	
							*	0 *1/8STX
							*	0 *ESC
							*	0 *UESC
							*	0 *CTY
							*	546,000 *SSTX
							*	0 *KDOT
							*	0 *TEA21
							*	0 *OFIN
		Project Total					*	<u>546,000</u>
ST-0757	133rd Street: East of Birch	No Change	2003	2004	2004	*	0 *GO	
	Construction of street improvements. Project is administered by Leawood and is being constructed by their developer. The City's cost reflects payment for the portion of 133rd St. in Overland Park. Construction will be completed by late 2004.					*	0 *PAYG	
							*	0 *1/8STX
							*	41,300 *ESC
							*	0 *UESC
							*	0 *CTY
							*	0 *SSTX
							*	0 *KDOT
							*	0 *TEA21
							*	0 *OFIN
		Project Total					*	<u>41,300</u>
ST-0767	135th Street Widening: East of Nall Ave.	No Change	2003	2004	2004	*	0 *GO	
	Construction of turn lanes at the northeast corner of 135th & Nall. Project is administered by Leawood. The City's cost reflects payment for the portion of the turn lane improvements on 135th St. in Overland Park. Construction will be completed by late 2004.					*	106,000 *PAYG	
							*	0 *1/8STX
							*	0 *ESC
							*	0 *UESC
							*	0 *CTY
							*	0 *SSTX
							*	0 *KDOT
							*	0 *TEA21
							*	0 *OFIN
		Project Total					*	<u>106,000</u>

*indicates project costs not included in plan totals

2006-2010 CAPITAL IMPROVEMENTS PROGRAM

Project Number	Project Description	2006-2010 PLAN					
		Change From 2005-2009 CIP	Des. Year	Cons. Year	Fin. Year	Plan 06-10	
STREET IMPROVEMENTS							
ST-0514	135th & US 69 Improvements	Revised Cost	2001	2004-	2002	* 1,040,315 *GO	
		Revised Scope		2005		* 0 *PAYG	
	<div style="border: 1px solid black; padding: 5px;"> Construction of northbound ramp improvements. Project includes acquisition of right-of-way. Project is funded by OP, the County CARS program and Federal "earmarked" funds. Total cost has been revised from 05-09 CIP to reflect changes in the original scope including extension of the project west of Antioch and east of Metcalf, addition of a turn lane at Metcalf, a new signal at 133rd and Metcalf, erosion control plans, ADA requirements and deployment of Dynamic Message Signs. </div>					* 0 *ESC	
							* 208,000 *UESC
							* 0 *CTY
							* 0 *SSTX
							* 0 *KDOT
							* 0 *TEA21
							* 0 *OFIN
					2004		* 5,442,000 *GO
							* 0 *PAYG
							* 0 *ESC
							* 0 *UESC
							* 2,111,000 *CTY
							* 0 *SSTX
							* 0 *KDOT
							* 2,750,000 *TEA21
							* 0 *OFIN
				2005		* 0 *GO	
						* 0 *PAYG	
						* 0 *ESC	
						* 0 *UESC	
						* 1,054,000 *CTY	
						* 0 *SSTX	
						* 0 *KDOT	
						* 0 *TEA21	
						* 0 *OFIN	
	Project Total					* <u>12,605,315</u>	

*indicates project costs not included in plan totals

2006-2010 CAPITAL IMPROVEMENTS PROGRAM

Project Number	Project Description	2006-2010 PLAN					Plan 06-10	
		Change From 2005-2009 CIP	Des. Year	Cons. Year	Fin. Year			
STREET IMPROVEMENTS								
ST-0662	133rd & Lamar Roundabout	No Change	2003	2005	2003	*	0 *GO	
	Construction of a roundabout to improve pedestrian safety and traffic operations. The project is unchanged from the 05-09 CIP.					*	0 *PAYG	
							*	0 *1/8STX
							*	0 *ESC
							*	0 *UESC
							*	0 *CTY
							*	158,000 *SSTX
							*	0 *KDOT
							*	0 *TEA21
							*	0 *OFIN
					2005		*	0 *GO
							*	0 *PAYG
							*	0 *1/8STX
							*	0 *ESC
							*	0 *UESC
							*	0 *CTY
							*	220,000 *SSTX
							*	0 *KDOT
							*	433,000 *TEA21
						*	0 *OFIN	
	Project Total					*	<u>811,000</u>	
ST-0018	I-435 & Antioch Interchange	Revised Cost	2001	2005	2004	*	4,081,000 *20GO	
	Design & construction of an interchange. Project is funded by Overland Park, a Federal demonstration project and the Kansas System Enhancement Program. City funding is for right-of-way, utility relocation & design. Costs have increased from 05-09 due to: additional right-of-way at Brookridge Country Club and Corporate Woods, extended project limits to Antioch & 108th Terr., addition of westbound Metcalf off-ramp, additional retaining walls, additional noise walls, and additional utility relocations.					*	0 *PAYG	
							*	0 *1/8STX
							*	0 *ESC
							*	0 *UESC
							*	0 *CTY
							*	0 *SSTX
							*	0 *KDOT
							*	0 *TEA21
							*	0 *OFIN
					2005		*	8,819,000 *20GO
							*	0 *PAYG
							*	0 *1/8STX
							*	0 *ESC
							*	0 *UESC
							*	0 *CTY
							*	0 *SSTX
							*	48,240,000 *KDOT
							*	7,560,000 *TEA21
						*	0 *OFIN	
	Project Total					*	<u>68,700,000</u>	

*indicates project costs not included in plan totals

2006-2010 CAPITAL IMPROVEMENTS PROGRAM

Project Number	Project Description	2006-2010 PLAN					Plan 06-10	
		Change From 2005-2009 CIP	Des. Year	Cons. Year	Fin. Year			
STREET IMPROVEMENTS								
ST-0636	79th Street Improvements Conser to Metcalf	Revised Cost	2005	2005	2004	*	693,000 *GO	
						*	0 *PAYG	
						*	0 *1/8STX	
	<div style="border: 1px solid black; padding: 5px;"> Construction of street improvements in Downtown Overland Park. Costs are increased over the 05-09 CIP to reflect actual bid prices as well as an increased project scope including: new downtown Overland Park type street lights; total replacement of traffic signal at 79th & Metcalf; pavement, curb and storms sewer removal and replacement from Santa Fe to Metcalf; and landscaping & decorative bricks to match Santa Fe and 80th Street projects recently completed. Construction will begin on the project in the spring of 2005. </div>					*	0 *ESC	
							*	0 *UESC
							*	0 *SWU
							*	0 *CTY
							*	0 *SSTX
							*	0 *KDOT
							*	0 *TEA21
							*	0 *OFIN
					2005	*		489,000 *GO
						*		148,000 *PAYG
						*		0 *1/8STX
						*		0 *ESC
						*		0 *UESC
						*		50,000 *SWU
					*		0 *CTY	
					*		0 *SSTX	
					*		0 *KDOT	
					*		0 *TEA21	
					*		0 *OFIN	
	Project Total				*		<u>1,380,000</u>	
ST-0354D	Design: College Boulevard Widening: Quivira - Oakmont	Removed	2005	2006	2005	*	0 *GO	
						*	0 *PAYG	
						*	0 *ESC	
	<div style="border: 1px solid black; padding: 5px;"> Design project has been removed. Construction of improvement has been combined with TH-0552 to complete improvements adjacent to JCCC at one time. </div>	Project combined with TH-0552				*	0 *UESC	
						*	0 *SWU	
						*	0 *CTY	
						*	0 *SSTX	
						*	0 *KDOT	
						*	0 *TEA21	
						*	0 *OFIN	
						*	<u>0</u>	
		Project Total				*		<u>0</u>

*indicates project costs not included in plan totals

2006-2010 CAPITAL IMPROVEMENTS PROGRAM

Project Number	Project Description	2006-2010 PLAN				
		Change From 2005-2009 CIP	Des. Year	Cons. Year	Fin. Year	Plan 06-10
STREET IMPROVEMENTS						
ST-0476	College & Pflumm Intersection Improvements	Revised Cost	2004	2005	2005	* 0 *GO
	Construction of dual left-turn lanes & dedicated right turn lanes. Joint project with Olathe and Lenexa. Cost has been revised from 05-09 plan based on field check of project design. Funding has been revised to remove CARS funding. Project timing has been advanced from 2006 to 2005.					* 244,500 *PAYG
						* 0 *ESC
						* 0 *UESC
						* 0 *SWU
						* 0 *CTY
						* 733,500 *OCITY
						* 0 *SSTX
						* 0 *KDOT
						* 1,392,000 *TEA21
						* 0 *OFIN
	Project Total					* <u>2,370,000</u>
ST-0354	College Boulevard Widening: Quivira to Oakmont	Removed	2005	2006	2006	0 GO
	Project has been removed. Construction of improvement has been combined with TH-0552 to complete improvements adjacent to JCCC at one time.					0 PAYG
						0 ESC
						0 UESC
						0 SWU
						0 CTY
						0 SSTX
						0 KDOT
						0 TEA21
						0 OFIN
		Project Total				
ST-0475	127th & Antioch Intersection Improvements	Revised Cost	2006	2007	2007	0 GO
	Construction of a southbound right-turn lane. Costs have been updated from the 05-09 CIP based on revised engineer's estimate.					157,000 PAYG
						0 ESC
						0 UESC
						0 SWU
						0 CTY
						0 SSTX
						0 KDOT
						0 TEA21
						0 OFIN
		Project Total				

*indicates project costs not included in plan totals

2006-2010 CAPITAL IMPROVEMENTS PROGRAM

Project Number	Project Description	2006-2010 PLAN				Plan 06-10	
		Change From 2005-2009 CIP	Des. Year	Cons. Year	Fin. Year		
STREET IMPROVEMENTS							
ST-0556	College & Nieman Intersection Improvements	Remove	2006	2007	2007	0 GO	
	<div style="border: 1px solid black; padding: 5px;"> Project was included in the 05-09 CIP. It is removed from 06-10 CIP due to addition of TH-0852 widening College between US 69 & Quivira in 2009. Improvements to this intersection are included in TH-0853, scheduled for 2009. </div>					0 PAYG	
							0 ESC
							0 UESC
							0 SWU
							0 CTY
							0 SSTX
							0 KDOT
							0 TEA21
							0 OFIN
							<u>0</u>
		Project Total					<u>0</u>
SUBTOTAL							- GO
STREET IMPROVEMENTS							- 20GO
						157,000 PAYG	
						- EXCIS	
						- 1/8STX	
						- ESC	
						- UESC	
						- SA	
						- SWU	
						- CTY	
						- SSTX	
						- OCITY	
						- KDOT	
						- ISTE A	
						- TEA21	
						- CDBG	
						- OFED	
						- ERF	
						- RECV	
						- GCR	
						- SPR	
						- PRIV	
						- ODF	
						- OFIN	
						<u>157,000</u>	

*indicates project costs not included in plan totals

2006-2010 CAPITAL IMPROVEMENTS PROGRAM

Project Number	Project Description	2006-2010 PLAN				Plan 06-10
		Change From 2005-2009 CIP	Des. Year	Cons. Year	Fin. Year	
SIDEWALK CONSTRUCTION						
SW-0418	2005 Sidewalk Construction Construction of sidewalks in areas without existing sidewalks.	No Change	2005	2005	2005 *	90,000 *PAYG
	Project Total				*	<u>90,000</u>
SW-0509	2006 Sidewalk Construction Construction of sidewalks in areas without existing sidewalks.	No Change	2006	2006	2006	90,000 PAYG
	Project Total					<u>90,000</u>
SW-0538	2007 Sidewalk Construction Construction of sidewalks in areas without existing sidewalks.	No Change	2007	2007	2007	90,000 PAYG
	Project Total					<u>90,000</u>
SW-0622	2008 Sidewalk Construction Construction of sidewalks in areas without existing sidewalks.	No Change	2008	2008	2008	90,000 PAYG
	Project Total					<u>90,000</u>
SW-0697	2009 Sidewalk Construction Construction of sidewalks in areas without existing sidewalks.	No Change	2009	2009	2009	90,000 PAYG
	Project Total					<u>90,000</u>
SW-0827	2010 Sidewalk Construction Construction of sidewalks in areas without existing sidewalks. New project for 06-10 CIP.	New	2010	2010	2010	90,000 PAYG
	Project Total					<u>90,000</u>

*indicates project costs not included in plan totals

2006-2010 CAPITAL IMPROVEMENTS PROGRAM

Project Number	Project Description	2006-2010 PLAN				Plan 06-10
		Change From 2005-2009 CIP	Des. Year	Cons. Year	Fin. Year	
SIDEWALK CONSTRUCTION						
SUBTOTAL						- GO
SIDEWALK CONSTRUCTION						- 20GO
					450,000	PAYG
						- EXCIS
						- 1/8STX
						- ESC
						- UESC
						- SA
						- SWU
						- CTY
						- SSTX
						- OCITY
						- KDOT
						- ISTEA
						- TEA21
						- CDBG
						- OFED
						- ERF
						- RECV
						- GCR
						- SPR
						- PRIV
						- ODF
						- OFIN
					450,000	

*indicates project costs not included in plan totals

2006-2010 CAPITAL IMPROVEMENTS PROGRAM

Project Number	Project Description	2006-2010 PLAN					Plan 06-10
		Change From 2005-2009 CIP	Des. Year	Cons. Year	Fin. Year		
THOROUGHFARE CONSTRUCTION IMPROVEMENTS - Eligible for Excise Tax							
TH-0357D	Design - Pflumm: 135th to 143rd Design to widen Pflumm from 2 to 4 lanes. Design occurred in 2001, however minor changes in the design are still occurring and being charged against this project. Construction is scheduled for completion in late 2004.	No Change	2001	2003	2001	*	0 *GO
						*	0 *PAYG
						*	400,000 *EXCIS
						*	0 *1/8STX
						*	0 *ESC
						*	0 *SA
						*	0 *CTY
						*	250,000 *OCITY
						*	0 *TEA21
	Project Total					*	<u>650,000</u>
TH-0358D	Design - 143rd: Antioch to Switzer Design to widen 143rd from Antioch to Switzer. Design occurred in 2002, however minor changes in the design are still occurring and being charged against this project. Construction is scheduled for completion in mid-2005.	No Change	2002	2003	2002	*	0 *GO
						*	130,000 *PAYG
						*	540,000 *EXCIS
						*	0 *1/8STX
						*	0 *ESC
						*	0 *SA
						*	0 *CTY
						*	0 *OCITY
						*	0 *TEA21
	Project Total					*	<u>670,000</u>
TH-0359	Metcalf: 135th to 151st Widened Metcalf from 2 to 4 lanes. Construction occurred in 2003 and landscaping is occurring in late 2004.	Revised Cost Revised Funding	2000	2002- 2003	2002	*	0 *GO
						*	0 *PAYG
						*	2,097,456 *EXCIS
						*	0 *1/8STX
						*	0 *ESC
						*	0 *SA
		[2002 CARS]				*	1,444,643 *CTY
						*	0 *OCITY
		[OFIN= Developer requirements]				*	5,240,000 *TEA21
						*	399,656 *OFIN
					2003	*	1,169,441 *GO
						*	0 *PAYG
						*	0 *EXCIS
						*	0 *1/8STX
						*	148,804 *ESC
						*	0 *SA
						*	0 *CTY
						*	0 *OCITY
						*	0 *TEA21
	Project Total					*	<u>10,500,000</u>

*indicates project costs not included in plan totals

2006-2010 CAPITAL IMPROVEMENTS PROGRAM

Project Number	Project Description	2006-2010 PLAN					Plan 06-10
		Change From 2005-2009 CIP	Des. Year	Cons. Year	Fin. Year		
THOROUGHFARE CONSTRUCTION IMPROVEMENTS - Eligible for Excise Tax							
TH-0020	Design - Nall: 135th to 143rd	Revised Cost	2002	2005	2002	*	0 *GO
	Final design to widen Nall from 2 to 4 lanes. Design was completed in 2004 at a cost slightly higher than originally estimated.					*	95,000 *PAYG
						*	340,800 *EXCIS
						*	0 *1/8STX
						*	0 *ESC
						*	0 *SA
						*	0 *CTY
						*	259,200 *OCITY
						*	0 *TEA21
		Project Total				*	<u>695,000</u>
TH-0511D		Design - 151st: Pflumm to Quivira	Revised Cost	2003	2005	2003	*
	Final design to widen 151st from 2 to 4 lanes. The project is being administered by Olathe. Design will be complete in early 2005. The cost has been reduced over the 05-09 CIP based on actual cost.					*	0 *PAYG
						*	165,000 *EXCIS
						*	0 *1/8STX
						*	0 *ESC
						*	0 *SA
						*	0 *CTY
						*	360,000 *OCITY
						*	0 *TEA21
		Project Total				*	<u>525,000</u>
TH-0357		Pflumm: 135th to 143rd	No Change	2001	2003	2003	*
	Widens Pflumm from 2 to 4 lanes. Construction is scheduled for completion in late 2004. The total cost is unchanged from 05-09 plan.					*	0 *PAYG
						*	0 *EXCIS
						*	0 *1/8STX
						*	0 *ESC
						*	0 *SA
					[2003 CARS]	*	1,050,000 *CTY
						*	974,846 *OCITY
						*	680,154 *SSTX
						*	4,600,000 *TEA21
		Project Total				*	<u>7,305,000</u>
TH-0429	2003 Preliminary Design	Revised Scope	2003	-	2003	*	0 *GO
	Preliminary engineering for alignments, traffic studies and cost estimates for thoroughfare improvements south of 159th Street. Funds from TH-0430 were transferred to this project .	Revised Cost				*	0 *PAYG
		Revised Funding				*	438,919 *EXCIS
		Transferred				*	0 *1/8STX
		from TH-0430				*	21,081 *ESC
						*	0 *SA
						*	0 *CTY
						*	0 *OCITY
						*	0 *TEA21
		Project Total				*	<u>460,000</u>

*indicates project costs not included in plan totals

2006-2010 CAPITAL IMPROVEMENTS PROGRAM

Project Number	Project Description	2006-2010 PLAN				Plan 06-10	
		Change From 2005-2009 CIP	Des. Year	Cons. Year	Fin. Year		
THOROUGHFARE CONSTRUCTION IMPROVEMENTS - Eligible for Excise Tax							
TH-0494D	Design - 151st: Antioch to Quivira	Revised Cost	2004	2006	2004	* 0 *GO	
	<div style="border: 1px solid black; padding: 5px;"> Final design to widen 151st from 2 to 4 lanes. Design began in January 2004 and will be completed in late 2005. The cost has been reduced to reflect actual design cost. </div>					* 0 *PAYG	
							* 1,020,000 *EXCIS
							* 0 *1/8STX
							* 0 *ESC
							* 0 *SA
							* 0 *CTY
							* 117,000 *OCITY
							* 0 *TEA21
		Project Total					* <u>1,137,000</u>
TH-0358		143rd: Antioch to Switzer	Revised Funding	2002	2003	2004	* 2,714,735 *GO
	<div style="border: 1px solid black; padding: 5px;"> Widens 143rd from 2-lane to 4-lane standard. Construction is underway and will be complete in summer 2005. The cost has not changed from 05-09 but funding sources have been modified. </div>					* 229,265 *PAYG	
							* 396,000 *EXCIS
							* 614,000 *1/8STX
							* 293,000 *ESC
							* 0 *SA
							* 1,179,000 *CTY
							* 1,004,000 *SSTX
							* 0 *OCITY
							* 0 *TEA21
		Project Total					* <u>6,430,000</u>
TH-0557D	Design - Nall: 151st to 159th	Remove	2004	TBD	2004	* 0 *GO	
	<div style="border: 1px solid black; padding: 5px;"> Project was shown in the 05-09 CIP. It has been removed for 06-10, and the costs incorporated into TH-0624D. TH-0624D originally designed only Nall: 143rd to 151st but now extends to 159th. </div>					* 0 *PAYG	
							* 0 *EXCIS
							* 0 *1/8STX
							* 0 *ESC
							* 0 *SA
							* 0 *CTY
							* 0 *OCITY
							* 0 *TEA21
		Project Total					* <u>0</u>
TH-0430		2004 Preliminary Design	Removed	2004	-	2004	* 0 *GO
	<div style="border: 1px solid black; padding: 5px;"> Project was shown in the 05-09 CIP. It has been removed and funds transferred to the 2003 Preliminary Design project, TH-0429. </div>					* 0 *PAYG	
							* 0 *EXCIS
							* 0 *1/8STX
							* 0 *ESC
							* 0 *SA
							* 0 *CTY
							* 0 *OCITY
							* 0 *TEA21
		Project Total					* <u>0</u>

*indicates project costs not included in plan totals

2006-2010 CAPITAL IMPROVEMENTS PROGRAM

Project Number	Project Description	2006-2010 PLAN				Plan 06-10
		Change From 2005-2009 CIP	Des. Year	Cons. Year	Fin. Year	
THOROUGHFARE CONSTRUCTION IMPROVEMENTS - Eligible for Excise Tax						
TH-0409D	Design - Switzer: 135th to 141st	Revised Cost	2004	2006	2004	* 0 *GO
	Final design to widen Switzer from 2 to 4 lanes. Design began in October 2004 and will be completed late in 2005. The cost has been slightly reduced to reflect actual design cost.					* 0 *PAYG
						* 0 *EXCIS
						* 368,825 *1/8STX
						* 196,175 *ESC
						* 0 *SA
						* 0 *CTY
						* 0 *OCITY
						* 0 *TEA21
		Project Total				* <u>565,000</u>
TH-0511		151st: Pflumm to Quivira	Revised Funding	2003	2005	2005
	Widens 151st from 2 to 4 lanes. Project and cost is unchanged from 05-09 CIP. Funding sources have been adjusted to reflect approved CARS funding and the interlocal agreement with Olathe.					* 365,000 *PAYG
						* 750,000 *EXCIS
						* 0 *1/8STX
						* 0 *ESC
						* 0 *SA
				[2005 CARS]		* 2,445,000 *CTY
						* 2,140,000 *OCITY
						* 0 *TEA21
	Project Total				* <u>5,700,000</u>	
TH-0431	2005 Preliminary Design	Revised Cost	2005	-	2005	* 0 *GO
	Preliminary engineering for alignments, traffic studies and cost estimates for future thoroughfare improvements. The cost has increased over the 05-09 CIP to permit additional designs.					* 0 *PAYG
						* 500,000 *EXCIS
						* 0 *1/8STX
						* 0 *ESC
						* 0 *SA
						* 0 *CTY
						* 0 *OCITY
						* 0 *TEA21
	Project Total				* <u>500,000</u>	
TH-0020A	Nall: 135th to 143rd	Revised Funding	2002	2005	2005	* 0 *GO
	Widens Nall from 2 to 4 lanes. The project was included in the 05-09 CIP. The cost of the project has decreased from \$8.28M to \$7.67M based on bid opening in Nov. 2004. CARS funding reflects current allocation.	Revised Cost				* 0 *PAYG
						* 488,950 *EXCIS
						* 1,300,000 *1/8STX
						* 176,830 *ESC
						* 0 *SA
						* 2,129,000 *CTY
						* 1,571,220 *OCITY
						* 2,000,000 *TEA21
		Project Total				* <u>7,666,000</u>

*indicates project costs not included in plan totals

2006-2010 CAPITAL IMPROVEMENTS PROGRAM

Project Number	Project Description	2006-2010 PLAN					Plan 06-10	
		Change From 2005-2009 CIP	Des. Year	Cons. Year	Fin. Year			
THOROUGHFARE CONSTRUCTION IMPROVEMENTS - Eligible for Excise Tax								
TH-0502D	Design - 143rd: Antioch to Metcalf	Revised Scope	2005	2007	2005	*	0 *GO	
		Revised Cost				*	0 *PAYG	
	<div style="border: 1px solid black; padding: 5px;"> Final design to widen 143rd from 2 to 4 lanes. Project was included in the 05-09 CIP. The cost is increased to incorporate additional requirements for ADA and NPDES compliance. </div>					*	0 *EXCIS	
							*	660,000 *1/8STX
							*	0 *ESC
							*	0 *SA
							*	0 *CTY
							*	0 *OCITY
							*	0 *TEA21
		Project Total					*	<u>660,000</u>
TH-0624D		Design - Nall: 143rd to 159th	Revised Cost	2005	2007	2005	*	285,000 *GO
			Revised Scope				*	0 *PAYG
	<div style="border: 1px solid black; padding: 5px;"> Final design to widen Nall from 2 to 4 lanes. 05-09 CIP included design from 143rd to 151st. 06-10 plan extends design to 159th, increases the cost and advances design year from 2006 to 2005. </div>	Revised Timing				*	0 *EXCIS	
			Combined TH-0557D into project				*	0 *ESC
							*	0 *SA
							*	56,250 *CTY
							*	440,000 *OCITY
							*	0 *TEA21
		Project Total					*	<u>1,200,000</u>
TH-0726D		Design - 127th: Metcalf to Nall	New	2005-2006	2010	2005	*	0 *GO
		<div style="border: 1px solid black; padding: 5px;"> Final design to upgrade 127th. A traffic study will be completed in 2005 and final design will begin in 2006. New project for the 06-10 CIP. </div>					*	0 *PAYG
								*
							*	0 *1/8STX
							*	50,000 *ESC
							*	0 *SA
							*	0 *CTY
							*	0 *OCITY
							*	0 *TEA21
					2006			0 GO
								40,000 PAYG
							0 EXCIS	
							0 1/8STX	
							310,000 ESC	
							0 SA	
							0 CTY	
							0 OCITY	
							0 TEA21	
	Project Total						<u>400,000</u>	

*indicates project costs not included in plan totals

2006-2010 CAPITAL IMPROVEMENTS PROGRAM

Project Number	Project Description	2006-2010 PLAN				Plan 06-10
		Change From 2005-2009 CIP	Des. Year	Cons. Year	Fin. Year	
THOROUGHFARE CONSTRUCTION IMPROVEMENTS - Eligible for Excise Tax						
TH-0494	151st: Antioch to Quivira	Revised Funding	2003	2006-	2006	0 GO
		Revised Timing		2007		24,000 PAYG
		Revised Cost				2,500,000 EXCIS
						750,000 1/8STX
						0 ESC
						0 SA
						2,444,750 CTY
						1,391,250 OCITY
						3,400,000 TEA21
					2007	2,890,000 GO
						0 PAYG
						2,000,000 EXCIS
						0 1/8STX
						0 ESC
						0 SA
						1,050,000 CTY
						0 OCITY
						0 TEA21
						<u>16,450,000</u>
	Project Total					
TH-0512	2006 Preliminary Design	Revised Cost	2006	-	2006	0 GO
		Revised Scope				0 PAYG
						200,000 EXCIS
						0 1/8STX
						0 ESC
						0 SA
						0 CTY
						0 OCITY
						0 TEA21
						<u>200,000</u>
	Project Total					
TH-0409	Switzer: 135th to 141st	Revised Scope	2004	2006	2006	4,347,000 GO
		Revised Cost				0 PAYG
		Revised Timing				500,000 EXCIS
						1,723,000 1/8STX
						0 ESC
						0 SA
						0 CTY
						0 OCITY
						0 TEA21
						<u>6,570,000</u>
	Project Total					

Widening of 151st from 2 to 4 lanes. Funding sources have been revised to reflect the approved CARS program and an interlocal agreement with Olathe. Previously, construction was anticipated to occur entirely in 2006.

Preliminary engineering for alignments, traffic studies and cost estimates for future thoroughfare improvements. The cost has increased over 05-09 CIP to permit additional designs.

Widening Switzer from 2 to 4 lanes was in the 05-09 CIP. For 06-10, cost is reduced; funding sources revised to reflect approved CARS and construction year advanced from 2008 to 2006.

*indicates project costs not included in plan totals

2006-2010 CAPITAL IMPROVEMENTS PROGRAM

Project Number	Project Description	2006-2010 PLAN				Plan 06-10
		Change From 2005-2009 CIP	Des. Year	Cons. Year	Fin. Year	
THOROUGHFARE CONSTRUCTION IMPROVEMENTS - Eligible for Excise Tax						
TH-0497D	Design - Antioch; 151st - 167th	Revised Scope	2006	2008	2006	312,000 GO
		Revised Timing				312,000 PAYG
		Revised Cost				0 EXCIS
						318,900 1/8STX
						98,100 ESC
						0 SA
						0 CTY
						0 OCITY
						0 TEA21
	Project Total					<u>1,041,000</u>
TH-0888	135th Street - Metcalf to Nall and Switzer to Antioch	New	2005	2006	2006	2,500,000 GO
						1,000,000 PAYG
						0 EXCIS
						0 1/8STX
						50,000 ESC
						0 SA
						1,200,000 CTY
						0 OCITY
						3,000,000 TEA21
	Project Total					<u>7,750,000</u>
TH-0501	143rd Street: Quivira to Switzer	Revised Funding	2007	2009	2007	0 GO
		Revised Timing				0 PAYG
						475,000 EXCIS
						0 1/8STX
						0 ESC
						0 SA
						0 CTY
						0 OCITY
						0 TEA21
				2009		0 GO
						577,100 PAYG
						350,000 EXCIS
						2,738,900 1/8STX
						0 ESC
						0 SA
						2,349,000 CTY
						700,000 OCITY
						0 TEA21
	Project Total					<u>7,190,000</u>

*indicates project costs not included in plan totals

2006-2010 CAPITAL IMPROVEMENTS PROGRAM

Project Number	Project Description	2006-2010 PLAN				Plan 06-10
		Change From 2005-2009 CIP	Des. Year	Cons. Year	Fin. Year	
THOROUGHFARE CONSTRUCTION IMPROVEMENTS - Eligible for Excise Tax						
TH-0543	2007 Preliminary Design	Revised Cost Revised Scope	2007	-	2007	0 GO 0 PAYG 200,000 EXCIS 0 1/8STX 0 ESC 0 SA 0 CTY 0 OCITY 0 TEA21
	<div style="border: 1px solid black; padding: 5px;">Preliminary engineering for alignments, traffic studies and cost estimates for future thoroughfare improvements. The cost has increased over 05-09 CIP to permit additional designs.</div>					
	Project Total					<u>200,000</u>
TH-0502	143rd: Antioch to Metcalf	Revised Funding	2005	2007	2007	0 GO 0 PAYG 1,860,950 EXCIS 2,203,300 1/8STX 120,750 ESC 0 SA 3,057,000 CTY 0 OCITY 0 TEA21
	<div style="border: 1px solid black; padding: 5px;">Widening 143rd from 2 to 4 lanes and replacement of US69 bridges over 143rd was in the 05-09 CIP. For 06-10, cost is the same but funding sources have modified for a slight reduction in CARS funding.</div>					
	Project Total					<u>7,242,000</u>
TH-0850	Switzer: 143rd to 151st	New	2007	2009	2007	0 GO 450,000 PAYG 0 EXCIS 0 1/8STX 0 ESC 0 SA 0 CTY 0 OCITY 0 TEA21
	<div style="border: 1px solid black; padding: 5px;">Design and construction to widen Switzer from 2 to 4 lanes is new to the 06-10 CIP. Project is added to address increasing traffic.</div>					
				2009		3,000,000 GO 1,230,000 PAYG 0 EXCIS 0 1/8STX 0 ESC 0 SA 1,000,000 CTY 0 OCITY 0 TEA21
	Project Total					<u>5,680,000</u>

*indicates project costs not included in plan totals

2006-2010 CAPITAL IMPROVEMENTS PROGRAM

Project Number	Project Description	2006-2010 PLAN				Plan 06-10
		Change From 2005-2009 CIP	Des. Year	Cons. Year	Fin. Year	
THOROUGHFARE CONSTRUCTION IMPROVEMENTS - Eligible for Excise Tax						
TH-0624	Nall Avenue: 143rd to 159th	Revised Cost	2005	2007	2007	7,068,000 GO
		Revised Funding				0 PAYG
		Revised Scope				2,000,000 EXCIS
		Revised Timing				0 1/8STX
						0 ESC
						0 SA
						1,700,000 CTY
						3,062,000 OCITY
						0 TEA21
	Project Total					<u>13,830,000</u>
TH-0623	2008 Preliminary Design	Revised Scope	2008	2008	2008	0 GO
		Revised Cost				0 PAYG
						200,000 EXCIS
						0 1/8STX
						0 ESC
						0 SA
						0 CTY
						0 OCITY
						0 TEA21
	Project Total					<u>200,000</u>
TH-0497	Antioch: 151st to 167th	New	2006	2008	2008	5,700,000 GO
						4,026,900 PAYG
						0 EXCIS
						0 1/8STX
						98,100 ESC
						0 SA
						0 CTY
						300,000 SSTX
						0 OCITY
						0 TEA21
				2009		0 GO
						0 PAYG
						2,650,000 EXCIS
						0 1/8STX
						0 ESC
						0 SA
						0 CTY
						0 OCITY
						0 TEA21
	Project Total					<u>12,775,000</u>

*indicates project costs not included in plan totals

2006-2010 CAPITAL IMPROVEMENTS PROGRAM

Project Number	Project Description	2006-2010 PLAN				Plan 06-10
		Change From 2005-2009 CIP	Des. Year	Cons. Year	Fin. Year	
THOROUGHFARE CONSTRUCTION IMPROVEMENTS - Eligible for Excise Tax						
TH-0500	Design - 143rd: Pflumm to Quivira	New	2009	TBD	2009	0 GO 0 PAYG 0 EXCIS 221,000 1/8STX 0 ESC 0 SA 0 CTY 0 OCITY 221,000 OCITY 0 TEA21
	Final design to widen 143rd from 2 to 4 lanes is new to the 06-10 CIP. Construction will be determined by coordinating timing with Olathe. This improvement is not included in Olathe's current 5-year plan.					OCITY= Olathe 221,000 OCITY 0 TEA21
	Project Total					<u>442,000</u>
TH-0725	2009 Preliminary Design	Revised Cost Revised Scope	2009	2009	2009	0 GO 0 PAYG 200,000 EXCIS 0 1/8STX 0 ESC 0 SA 0 CTY 0 OCITY 0 TEA21
	Preliminary engineering for alignments, traffic studies and cost estimates for future thoroughfare improvements. The cost has increased over 05-09 CIP to permit additional designs.					0 OCITY 0 TEA21
	Project Total					<u>200,000</u>
TH-0872	Design - 159th: Nall to Mission	New	2009	TBD	2009	0 GO 500,000 PAYG 0 EXCIS 0 1/8STX 0 ESC 0 SA 0 CTY 0 OCITY 0 TEA21
	Final design to widen 159th from 2 to 4 lanes is new to the 06-10 CIP.					0 OCITY 0 TEA21
	Project Total					<u>500,000</u>
TH-0869	2010 Preliminary Design	New	2010	2010	2010	0 GO 0 PAYG 200,000 EXCIS 0 1/8STX 0 ESC 0 SA 0 CTY 0 OCITY 0 TEA21
	Preliminary engineering for alignments, traffic studies and cost estimates for future thoroughfare improvements. This 2010 project is new to the 06-10 CIP.					0 OCITY 0 TEA21
	Project Total					<u>200,000</u>

*indicates project costs not included in plan totals

2006-2010 CAPITAL IMPROVEMENTS PROGRAM

Project Number	Project Description	2006-2010 PLAN				Plan 06-10
		Change From 2005-2009 CIP	Des. Year	Cons. Year	Fin. Year	
THOROUGHFARE CONSTRUCTION IMPROVEMENTS - Eligible for Excise Tax						
TH-0726	127th: Metcalf to Nall	New	2006	2010	2010	800,000 GO
	Upgrading 127th Street is new to the 06-10 CIP.					0 PAYG
						1,500,000 EXCIS
						0 1/8STX
						0 ESC
						0 SA
						2,000,000 CTY
						0 OCITY
					0 TEA21	
	Project Total					<u>4,300,000</u>
TH-0870	Design - 159th: Switzer to Antioch	New	2010	TBD	2010	0 GO
	Final design to widen 159th from 2 to 4 lanes is new to the 06-10 CIP.					500,000 PAYG
						0 EXCIS
						0 1/8STX
						0 ESC
						0 SA
						0 CTY
						0 OCITY
					0 TEA21	
	Project Total					<u>500,000</u>
TH-0871	Design - Quivira: 151st to 159th	New	2010	TBD	2010	0 GO
	Final design to widen Quivira from 2 to 4 lanes is new to the 06-10 CIP.					500,000 PAYG
						0 EXCIS
						0 1/8STX
						0 ESC
						0 SA
						0 CTY
						0 OCITY
					0 TEA21	
	Project Total					<u>500,000</u>

*indicates project costs not included in plan totals

2006-2010 CAPITAL IMPROVEMENTS PROGRAM

Project Number	Project Description	2006-2010 PLAN				Plan 06-10
		Change From 2005-2009 CIP	Des. Year	Cons. Year	Fin. Year	
THOROUGHFARE CONSTRUCTION IMPROVEMENTS - Eligible for Excise Tax						
SUBTOTAL						26,617,000 GO
THOROUGHFARE CONSTRUCTION IMPROVEMENTS - Eligible for Excise Tax						- 20GO
						9,160,000 PAYG
						14,835,950 EXCIS
						7,955,100 1/8STX
						676,950 ESC
						- UESC
						- SA
						- SWU
						14,800,750 CTY
						300,000 SSTX
						5,374,250 OCITY
						- KDOT
						- ISTE A
						6,400,000 TEA21
						- CDBG
						- OFED
						- ERF
						- RECV
						- GCR
						- SPR
						- PRIV
						- ODF
						- OFIN
						<u>86,120,000</u>

*indicates project costs not included in plan totals

2006-2010 CAPITAL IMPROVEMENTS PROGRAM

Project Number	Project Description	2006-2010 PLAN				Plan 06-10	
		Change From 2005-2009 CIP	Des. Year	Cons. Year	Fin. Year		
THOROUGHFARE CONSTRUCTION IMPROVEMENTS - Not Eligible for Excise Tax							
TH-0017A	Metcalf: 86th to 103rd	Revised Cost	2001	2002	2001	* 0 *GO	
	<div style="border: 1px solid black; padding: 5px;"> This project widened Metcalf from 93rd to 99th and overlaid it to 103rd. Construction was finalized in 2004. The final cost was approximately \$100,000 higher than the total included in the 05-09 CIP. </div>					* 0 *PAYG	
							* 237,200 *1/8STX
			[Financed with City sales tax and in the 2001 maintenance program (OFIN). KDOT funding is 2001 KLINK funding from the state.]				* 0 *ESC
							* 0 *UESC
							* 0 *SA
							* 0 *CTY
							* 0 *OCITY
							* 300,000 *KDOT
							* 0 *TEA21
			[OFIN = 2001 Maintenance Program]				* 313,079 *OFIN
					2002		* 1,298,721 *GO
							* 184,845 *PAYG
							* 0 *1/8STX
							* 0 *ESC
							* 23,940 *UESC
						* 0 *SA	
						* 375,000 *CTY	
						* 0 *OCITY	
						* 0 *KDOT	
						* 0 *TEA21	
		[OFIN = 2002 Maintenance Program (\$98,075), interest (\$6,140)]				* 104,215 *OFIN	
		Project Total				* <u>2,837,000</u>	
TH-0019A	119th: Lowell to Nall	Revised Cost	2001	2002	2002	* 0 *GO	
	<div style="border: 1px solid black; padding: 5px;"> Widens 119th from 4 to 6 lanes. Construction was completed in 2002. The final cost shown in the 06-10 Plan is slightly less than the total included in the 05-09 Plan. </div>					* 0 *PAYG	
							* 1,813,545 *1/8STX
							* 0 *ESC
							* 186,389 *UESC
							* 0 *SA
			[2002 CARS]				* 1,686,293 *CTY
							* 0 *OCITY
							* 0 *KDOT
							* 0 *TEA21
			[OFIN=JOCO wastewater]				* 3,073 *OFIN
		Project Total				* <u>3,689,300</u>	

*indicates project costs not included in plan totals

2006-2010 CAPITAL IMPROVEMENTS PROGRAM

Project Number	Project Description	2006-2010 PLAN					Plan 06-10	
		Change From 2005-2009 CIP	Des. Year	Cons. Year	Fin. Year			
THOROUGHFARE CONSTRUCTION IMPROVEMENTS - Not Eligible for Excise Tax								
TH-0009A	87th: Quivira to Goddard	No Change	2001	2004	2002	*	1,350,000 *1/8STX	
	<div style="border: 1px solid black; padding: 5px;"> Interchange improvement at 87th and I-35. The project is administered by the City of Lenexa. The total \$54.5M project cost is funded in part by the cities of Overland Park (\$9.5M) and Lenexa (\$7M). The balance is funded by the Kansas System Enhancement Program (\$26.3 M); Federal TEA21 funds (\$10.4 M) and CARS (\$1.9 M). Funding included in the CIP is for the City portion only. </div>					*	1,303,000 *GO	
							*	0 *PAYG
						2003	*	6,052,000 *GO
						2004	*	0 *GO
							*	0 *PAYG
							*	1,381,000 *1/8STX
							*	0 *ESC
							*	0 *SA
							*	312,500 *CTY
							*	0 *OCITY
							*	0 *KDOT
							*	0 *TEA21
							*	0 *OFIN
						2005	*	0 *GO
							*	0 *PAYG
							*	0 *1/8STX
							*	0 *ESC
							*	0 *SA
						*	312,500 *CTY	
						*	0 *OCITY	
						*	0 *KDOT	
						*	0 *TEA21	
						*	0 *OFIN	
	Project Total					*	<u>10,711,000</u>	

*indicates project costs not included in plan totals

2006-2010 CAPITAL IMPROVEMENTS PROGRAM

Project Number	Project Description	2006-2010 PLAN					Plan 06-10	
		Change From 2005-2009 CIP	Des. Year	Cons. Year	Fin. Year			
THOROUGHFARE CONSTRUCTION IMPROVEMENTS - Not Eligible for Excise Tax								
TH-0361	Metcalf: College to 123rd	No Change	2001	2003	2003	*	1,462,000 *GO	
	Widens Metcalf from 4 to 6 lanes. This project is unchanged from the 05-09 CIP. The project was completed in 2004.					*	0 *PAYG	
							*	1,638,000 *1/8STX
							*	377,000 *ESC
							*	250,000 *UESC
							*	0 *SA
							*	1,695,000 *CTY
							*	0 *OCITY
							*	0 *KDOT
							*	0 *TEA21
							*	0 *OFIN
					2004		*	0 *GO
							*	0 *PAYG
							*	0 *1/8STX
							*	0 *ESC
							*	0 *SA
							*	1,500,000 *CTY
							*	0 *OCITY
							*	0 *KDOT
						*	0 *TEA21	
						*	0 *OFIN	
	Project Total					*	<u>6,922,000</u>	
TH-0776	Overland Park Traffic Model Update	No Change	2004	2004	2004	*	0 *GO	
	Software update to the current Traffic Model, which simulates traffic patterns and projects traffic volumes for 20 years. The model is used to evaluate development projects within the City as part of the planning process. The project is unchanged from 05-09.					*	0 *PAYG	
							*	0 *1/8STX
							*	0 *ESC
							*	103,000 *UESC
							*	0 *SA
							*	0 *CTY
							*	0 *OCITY
							*	0 *KDOT
							*	0 *TEA21
							*	0 *OFIN
	Project Total					*	<u>103,000</u>	

*indicates project costs not included in plan totals

2006-2010 CAPITAL IMPROVEMENTS PROGRAM

Project Number	Project Description	2006-2010 PLAN				Plan 06-10
		Change From 2005-2009 CIP	Des. Year	Cons. Year	Fin. Year	
THOROUGHFARE CONSTRUCTION IMPROVEMENTS - Not Eligible for Excise Tax						
TH-0552	Quivira: College to 114th and College: Quivira to Oakmont	Revised Cost	2005	2006	2005	* 0 *GO
		Revised Funding				* 0 *PAYG
		Revised Scope				* 250,000 *1/8STX
		Revised Timing				* 0 *ESC
						* 0 *SA
						* 0 *CTY
						* 0 *OCITY
						* 0 *KDOT
						* 0 *TEA21
						* 0 *OFIN
				2006		1,000,000 GO
						0 PAYG
						825,000 1/8STX
						0 ESC
						0 SA
						0 CTY
						0 OCITY
						0 KDOT
						0 TEA21
						0 OFIN
	Project Total					<u>2,075,000</u>
TH-0580	Metcalf: 99th to 103rd	No Change	2005	2007	2007	0 GO
						0 PAYG
						1,425,000 1/8STX
						0 ESC
						0 SA
						0 CTY
						0 OCITY
						0 KDOT
						2,265,000 TEA21
						0 OFIN
	Project Total					<u>3,690,000</u>

These improvements, adjacent to Johnson County Community College widens Quivira and College from 4 to 6 lanes. In the 05-09 CIP TH0552 improved only the Quivira portion. For the 06-09 plan ST0354, the College section, has been combined with this project. Timing of the improvements have been advanced from 2006/2007 to a 2006 construction year for both. For the 06-10 plan the total project cost has been increased over the 05-09 CIP to reflect this change.

Widens Metcalf from 4 to 6 lanes. The project includes replacement of the northbound bridge. The project is unchanged from the 05-09 CIP.

*indicates project costs not included in plan totals

2006-2010 CAPITAL IMPROVEMENTS PROGRAM

Project Number	Project Description	2006-2010 PLAN				Plan 06-10	
		Change From 2005-2009 CIP	Des. Year	Cons. Year	Fin. Year		
THOROUGHFARE CONSTRUCTION IMPROVEMENTS - Not Eligible for Excise Tax							
TH-0734	119th: Rosana Square to US 69	Revised Timing	2005	2008	2005	* 0 *GO	
	Widens 119th from 4 to 6 lanes. Upon completion, 119th will be 6 lanes from the eastern city limits to US 69. The 06-10 proposed CIP advances construction one year from 2009 to 2008. The total project cost has been increased over the 05-09 CIP based on current cost of widening projects. Funding sources are also changed from 05-09 to reflect CARS funding and Federal funding.				*	0 *PAYG	
						*	0 *EXCIS
						*	550,000 *1/8STX
						*	0 *ESC
						*	0 *SA
						*	0 *CTY
						*	0 *OCITY
						*	0 *TEA21
					2008		0 GO
							700,000 PAYG
							0 EXCIS
							0 1/8STX
							0 ESC
							0 SA
					[2009 CARS]		1,850,000 CTY
						0 OCITY	
						<u>2,700,000</u> TEA21	
	Project Total					<u>5,800,000</u>	
TH-0852	College Blvd: US 69 to Quivira	New	2007	2009	2007	0 GO	
	Widens College from 4 to 6 lanes. The project is new to the 06-10 CIP. Design of the project will be done in 2007; construction is scheduled for 2009.					500,000 PAYG	
							0 EXCIS
							0 1/8STX
							0 ESC
							0 SA
							0 CTY
							0 OCITY
							0 TEA21
					2009		0 GO
							1,000,000 PAYG
							0 EXCIS
							0 1/8STX
							0 ESC
							0 SA
							500,000 CTY
						0 OCITY	
						<u>3,000,000</u> TEA21	
	Project Total					<u>5,000,000</u>	

*indicates project costs not included in plan totals

2006-2010 CAPITAL IMPROVEMENTS PROGRAM

Project Number	Project Description	2006-2010 PLAN				Plan 06-10
		Change From 2005-2009 CIP	Des. Year	Cons. Year	Fin. Year	
THOROUGHFARE CONSTRUCTION IMPROVEMENTS - Not Eligible for Excise Tax						
TH-0853	Antioch: I-435 to College Blvd.	New	2008	2010	2008	0 GO 500,000 PAYG 0 EXCIS 0 1/8STX 0 ESC 0 SA 0 CTY 0 OCITY 0 TEA21
	Widens Antioch from 4 to 6 lanes. The project is new to the 06-10 CIP and is scheduled to be completed following construction of the I-435 & Antioch Interchange. Design is scheduled for 2008 and construction 2010.		2008 Design, \$500,000	2010 Construction		0 1/8STX 0 ESC 0 SA 0 CTY 0 OCITY 0 TEA21
					2010	1,500,000 GO 1,000,000 PAYG 0 EXCIS 0 1/8STX 0 ESC 0 SA 1,000,000 CTY 0 OCITY 2,000,000 TEA21
						<u>6,000,000</u>
	Project Total					<u>6,000,000</u>

*indicates project costs not included in plan totals

2006-2010 CAPITAL IMPROVEMENTS PROGRAM

Project Number	Project Description	2006-2010 PLAN				Plan 06-10
		Change From 2005-2009 CIP	Des. Year	Cons. Year	Fin. Year	
THOROUGHFARE CONSTRUCTION IMPROVEMENTS - Not Eligible for Excise Tax						
	SUBTOTAL					
	THOROUGHFARE CONSTRUCTION IMPROVEMENTS - Not Eligible for Excise Tax					2,500,000 GO
						- 20GO
						3,700,000 PAYG
						- EXCIS
						2,250,000 1/8STX
						- ESC
						- UESC
						- SA
						- SWU
						3,350,000 CTY
						- SSTX
						- OCITY
						- KDOT
						- ISTEА
						9,965,000 TEA21
						- CDBG
						- OFED
						- ERF
						- RECV
						- GCR
						- SPR
						- PRIV
						- ODF
						- OFIN
						<u>21,765,000</u> TOTAL

*indicates project costs not included in plan totals

2006-2010 CAPITAL IMPROVEMENTS PROGRAM

<u>Project Number</u>	<u>Project Description</u>	<u>2006-2010 PLAN</u>				<u>Plan 06-10</u>
		<u>Change From 2005-2009 CIP</u>	<u>Des. Year</u>	<u>Cons. Year</u>	<u>Fin. Year</u>	
THOROUGHFARES - SUMMARY						
	SUBTOTAL					29,117,000 GO
	THOROUGHFARES - SUMMARY					- 20GO
						12,860,000 PAYG
						14,835,950 EXCIS
						10,205,100 1/8STX
						676,950 ESC
						- UESC
						- SA
						- SWU
						18,150,750 CTY
						300,000 SSTX
						5,374,250 OCITY
						- KDOT
						- ISTE A
						16,365,000 TEA21
						- CDBG
						- OFED
						- ERF
						- RECV
						- GCR
						- SPR
						- PRIV
						- ODF
						- OFIN
						<u>107,885,000</u>

*indicates project costs not included in plan totals

2006-2010 CAPITAL IMPROVEMENTS PROGRAM

Project Number	Project Description	2006-2010 PLAN					Plan 06-10
		Change From 2005-2009 CIP	Des. Year	Cons. Year	Fin. Year		
TRAFFIC SIGNALS AND TRAFFIC MANAGEMENT SYSTEMS							
TS-0741	2004 Traffic Signal Installation, Modification and Replacement: Construction of new signals at 133rd & Metcalf and improvement to the signals at Shawnee Mission Parkway & Lamar and School Zone Flashers at 147th & Metcalf. Project will be complete by April 2005.	No Change	2003	2004	2004	*	175,000 *PAYG
						*	75,000 *ESC
						*	0 *OCITY
						*	0 *CTY
						*	0 *TEA21
					[OFED= CMAQ Funds]	*	50,000 *OFED
						*	0 *RECV
	Project Total					*	<u>300,000</u>
TS-0054	2004 OPTCS - Phase 4 Constructs new communication controllers & cabinets. Replaces existing telecable communication system with fiber optic. Project will be completed in Dec. 2004.	No Change	2003	2004	2004	*	45,000 *PAYG
						*	0 *ESC
						*	0 *OCITY
						*	0 *CTY
						*	0 *TEA21
						*	0 *OFED
						*	0 *RECV
	Project Total					*	<u>45,000</u>
TS-0657	Metcalf Corridor Communication Project Installation of new controllers between 75th & 159th. Upgrades hardware & software; connects signals to fiber network. Project will improve traffic operations along Metcalf. Estimated completion date is the fall of 2005.	No Change	2003	2004	2004	*	100,000 *PAYG
						*	0 *ESC
						*	0 *OCITY
						*	0 *CTY
						*	0 *TEA21
					[OFED= CMAQ Funds]	*	200,000 *OFED
						*	0 *RECV
	Project Total					*	<u>300,000</u>
TS-0658	Overland Park Traffic Website Develops page on OP website with real time traffic information. Estimated completion date is summer 2005.	No Change	2003	2004	2004	*	105,000 *PAYG
						*	0 *ESC
						*	0 *OCITY
						*	0 *CTY
						*	0 *TEA21
					[OFED= CMAQ Funds]	*	120,000 *OFED
						*	0 *RECV
	Project Total					*	<u>225,000</u>

*indicates project costs not included in plan totals

2006-2010 CAPITAL IMPROVEMENTS PROGRAM

Project Number	Project Description	2006-2010 PLAN					Plan 06-10
		Change From 2005-2009 CIP	Des. Year	Cons. Year	Fin. Year		
TRAFFIC SIGNALS AND TRAFFIC MANAGEMENT SYSTEMS							
TS-0413	2005 Traffic Signal Installation, Modification and Replacement: Construct 2 new signals at locations to be determined and modifies/replaces existing signals as needed . Total funding less than 05-09 plan because Federal funds are not available.	Revised Cost	2004	2005	2005	*	277,500 *PAYG
						*	75,000 *ESC
						*	0 *CTY
						*	0 *OCITY
						*	0 *TEA21
						*	0 *OFED
						*	0 *RECV
	Project Total					*	<u>352,500</u>
TS-0671	151st & Lowell Traffic Signal New traffic signal recommended during 2005 budget process. Project was not included in the 05-09 CIP.	New	2004	2005	2005	*	130,000 *PAYG
						*	0 *ESC
						*	0 *OCITY
						*	0 *CTY
						*	0 *TEA21
						*	0 *OFED
						*	0 *RECV
	Project Total					*	<u>130,000</u>
TS-0055	2005 OPTCS - Phase 5 New communications controllers near 95th and Quivira. Replaces existing telecable communication system with fiber optic. 06-10 Plan eliminates Federal funds in 05-09 Plan and reduces cost (Federal funds not available).	Revised Cost Revised Funding	2004	2005	2005	*	200,000 *PAYG
						*	0 *ESC
						*	0 *OCITY
						*	0 *CTY
						*	0 *TEA21
						*	0 *OFED
						*	0 *RECV
	Project Total					*	<u>200,000</u>
TS-0799	Quivira & 135th Street Fiber Project Installs fiber and conduit between 119th and 135th as part of construction of overall fiber network. New to 06-10 CIP.	New	2004	2005	2005	*	69,700 *PAYG
						*	25,300 *ESC
						*	0 *OCITY
						*	51,000 *CTY
						*	0 *TEA21
						*	0 *OFED
						*	0 *RECV
	Project Total					*	<u>146,000</u>
TS-0825	158th & Metcalf Traffic Signal New traffic signal recommended during 2005 budget process. Project was not included in 05-09 CIP.	New	2004	2005	2005	*	137,500 *PAYG
						*	17,500 *ESC
						*	0 *OCITY
						*	0 *CTY
						*	0 *TEA21
						*	0 *OFED
						*	0 *RECV
	Project Total					*	<u>155,000</u>

*indicates project costs not included in plan totals

2006-2010 CAPITAL IMPROVEMENTS PROGRAM

Project Number	Project Description	2006-2010 PLAN					Plan 06-10
		Change From 2005-2009 CIP	Des. Year	Cons. Year	Fin. Year		
TRAFFIC SIGNALS AND TRAFFIC MANAGEMENT SYSTEMS							
TS-0866	131st & Antioch Traffic Signal New traffic signal recommended during 2005 budget process. Project was not included in original 05-09 CIP.	New	2004	2005	2005	*	130,000 *PAYG
						*	0 *ESC
						*	0 *OCITY
						*	0 *CTY
						*	0 *TEA21
						*	0 *OFED
						*	0 *RECV
	Project Total					*	<u>130,000</u>
TS-0879	School Zone Flashers Addition of flashers at schools in the Shawnee Mission School District using School Sales Tax Funds.	New	2004	2005	2005	*	0 *PAYG
						*	0 *ESC
						*	25,000 *SSTX
						*	0 *CTY
						*	0 *TEA21
						*	0 *OFED
						*	0 *RECV
	Project Total					*	<u>25,000</u>
TS-0672	133rd & Pflumm Traffic Signal New traffic signal recommended during 2005 budget process. Project was not included in original 05-09 CIP. Joint project with City of Olathe.	New	2005	2006	2006		75,000 PAYG
							0 ESC
							75,000 OCITY
							0 CTY
							0 TEA21
							0 OFED
							0 RECV
	Project Total						<u>150,000</u>
TS-0414	2006 Traffic Signal Installation, Modification and Replacement: Three (3) new signals at locations to be determined; miscellaneous modification & replacement of existing signals as needed. 06-10 total funding is increased over 05-09 plan.	Revised Cost	2004	2006	2006		22,000 PAYG
							58,000 ESC
							70,000 OCITY
							0 CTY
							0 TEA21
							0 OFED
							0 RECV
	Project Total						<u>150,000</u>

*indicates project costs not included in plan totals

2006-2010 CAPITAL IMPROVEMENTS PROGRAM

Project Number	Project Description	2006-2010 PLAN				Plan 06-10
		Change From 2005-2009 CIP	Des. Year	Cons. Year	Fin. Year	
TRAFFIC SIGNALS AND TRAFFIC MANAGEMENT SYSTEMS						
TS-0896	2006 Traffic Signal Installation, 127th & Nieman Installation of traffic signal at 127th and Nieman Road. Funding for this project has been transferred from TS-0414.	New	2004	2006	2006	150,000 PAYG 0 ESC 0 OCITY 0 CTY 0 TEA21 0 OFED 0 RECV
	Project Total					<u>150,000</u>
TS-0897	2006 Traffic Signal Installation, 139th & Metcalf Installation of traffic signal at 139th and Metcalf Road. Funding for this project has been transferred from TS-0414.	New	2004	2006	2006	133,000 PAYG 17,000 ESC 0 OCITY 0 CTY 0 TEA21 0 OFED 0 RECV
	Project Total					<u>150,000</u>
TS-0056	2006 OPTCS - Phase 6 New communications controllers & cabinets. Replaces existing telecable communication system with fiber optic. 06-10 Plan is increased over 05-09 Plan.	Revised Cost Revised Scope	2005	2006	2006	456,000 PAYG 0 ESC 0 OCITY 386,000 CTY 0 TEA21 0 OFED 0 RECV
	Project Total					<u>842,000</u>
TS-0849	OPTICOM Upgrade Upgrade of the system used by Police and Fire to override traffic signals. This upgrade will prevent use of private devices. Project is new to the 06-10 CIP.	New	2005	2006	2006	120,000 PAYG 0 ESC 0 OCITY 0 CTY 0 TEA21 0 OFED 0 RECV
	Project Total					<u>120,000</u>
TS-0749	KC Scout/OPTCS Interface Project will tie the City's traffic system into regional KC Scout traffic management system. Project is unchanged from the 05-09 CIP.	No Change	2005	2006	2006	45,000 PAYG 0 ESC 0 OCITY 0 CTY 135,000 TEA21 0 OFED 0 RECV
	Project Total					<u>180,000</u>

*indicates project costs not included in plan totals

2006-2010 CAPITAL IMPROVEMENTS PROGRAM

Project Number	Project Description	2006-2010 PLAN					Plan 06-10	
		Change From 2005-2009 CIP	Des. Year	Cons. Year	Fin. Year			
TRAFFIC SIGNALS AND TRAFFIC MANAGEMENT SYSTEMS								
TS-0750	135th Street Changeable Message Signs <div style="border: 1px solid black; padding: 5px;"> Construction of new sign that will be connected with the KC Scout system. The project is unchanged from the adopted 2005-2009 CIP. </div>	No Change	2005	2006	2006		54,000	PAYG
							0	ESC
							0	OCITY
							0	CTY
							216,000	TEA21
							0	OFED
							0	RECV
	Project Total						<u>270,000</u>	
TS-0540	2007 Traffic Signal Installation, Modification and Replacement: <div style="border: 1px solid black; padding: 5px;"> Four (4) new signals at locations to be determined; miscellaneous modification & replacement of existing signals as needed. 06-10 total funding is increased over 05-09 plan. </div>	Revised Cost Revised Scope	2006	2007	2007		525,000	PAYG
							75,000	ESC
							0	OCITY
							0	CTY
							0	TEA21
					[OFED= CMAQ Funds]		0	OFED
							0	RECV
	Project Total						<u>600,000</u>	
TS-0539	2007 OPTCS - Phase 7 <div style="border: 1px solid black; padding: 5px;"> New communications controllers & cabinets. Replaces existing telecable communication system with fiber optic. 06-10 plan is unchanged from the 05-09 plan. </div>	No Change	2006	2007	2007		142,000	PAYG
							0	ESC
							0	OCITY
							0	CTY
							680,000	TEA21
							0	OFED
							0	RECV
	Project Total						<u>822,000</u>	
TS-0597	2008 Traffic Signal Installation, Modification and Replacement: <div style="border: 1px solid black; padding: 5px;"> Four (4) new signals at locations to be determined; miscellaneous modification & replacement of existing signals as needed. 06-10 total funding is increased over 05-09 plan. </div>	Revised Scope Revised Cost	2007	2008	2008		520,000	PAYG
							80,000	ESC
							0	OCITY
							0	CTY
							0	TEA21
					[OFED= CMAQ Funds]		0	OFED
							0	RECV
	Project Total						<u>600,000</u>	

*indicates project costs not included in plan totals

2006-2010 CAPITAL IMPROVEMENTS PROGRAM

Project Number	Project Description	2006-2010 PLAN					Plan 06-10
		Change From 2005-2009 CIP	Des. Year	Cons. Year	Fin. Year		
TRAFFIC SIGNALS AND TRAFFIC MANAGEMENT SYSTEMS							
TS-0617	2008 OPTCS - Phase 8 New communications controllers & cabinets. Replaces existing telecable communication system with fiber optic. 06-10 Plan eliminates Federal funding slightly reduces the project cost in comparison to the 05-09 plan.	Revised Cost Revised Funding	2007	2008	2008	900,000 0 0 0 0 0	PAYG ESC OCITY CTY TEA21 OFED RECV
	Project Total					<u>900,000</u>	
TS-0719	2009 Traffic Signal Installation, Modification and Replacement: Four (4) new signals at locations to be determined; miscellaneous modification & replacement of existing signals as needed. 06-10 total funding is increased over 05-09 plan.	Revised Cost Revised Funding	2008	2009	2009	525,000 75,000 0 0 0 0	PAYG ESC OCITY CTY TEA21 OFED RECV
	Project Total				[OFED= CMAQ Funds]	<u>600,000</u>	
TS-0617	2009 OPTCS - Phase 9 New communications controllers & cabinets. Replaces existing telecable communication system with fiber optic. 06-10 Plan eliminates Federal funding slightly reduces the project cost in comparison to the 05-09 plan.	Revised Cost	2008	2009	2009	900,000 0 0 0 0 0	PAYG ESC OCITY CTY TEA21 OFED RECV
	Project Total					<u>900,000</u>	
TS-0832	2010 Traffic Signal Installation, Modification and Repair Four (4) new signals at locations to be determined; miscellaneous modification & replacement of existing signals as needed. Project is new to 06-10 plan.	New	2009	2010	2010	520,000 80,000 0 0 0 0	PAYG ESC OCITY CTY TEA21 OFED RECV
	Project Total					<u>600,000</u>	
TS-0833	2010 OPTCS - Phase 10 New communications controllers & cabinets. Replaces existing telecable communication system with fiber optic. This project is new to the 06-10 Plan.	New	2009	2010	2010	1,000,000 0 0 0 0 0	PAYG ESC OCITY CTY TEA21 OFED RECV
	Project Total					<u>1,000,000</u>	

*indicates project costs not included in plan totals

2006-2010 CAPITAL IMPROVEMENTS PROGRAM

<u>Project Number</u>	<u>Project Description</u>	<u>2006-2010 PLAN</u>				<u>Plan 06-10</u>
		<u>Change From 2005-2009 CIP</u>	<u>Des. Year</u>	<u>Cons. Year</u>	<u>Fin. Year</u>	
TRAFFIC SIGNALS AND TRAFFIC MANAGEMENT SYSTEMS						
SUBTOTAL						- GO
TRAFFIC SIGNALS AND TRAFFIC MANAGEMENT SYSTEMS						- 20GO
					6,087,000	PAYG
					-	EXCIS
					-	1/8STX
					385,000	ESC
					-	UESC
					-	SA
					-	SWU
					386,000	CTY
					-	SSTX
					145,000	OCITY
					-	KDOT
					-	ISTEA
					1,031,000	TEA21
					-	CDBG
					-	OFED
					-	ERF
					-	RECV
					-	GCR
					-	SPR
					-	PRIV
					-	ODF
					-	OFIN
					<u>8,034,000</u>	

*indicates project costs not included in plan totals

2006-2010 CAPITAL IMPROVEMENTS PROGRAM

<u>Project Number</u>	<u>Project Description</u>	<u>2006-2010 PLAN</u>				
		<u>Change From 2005-2009 CIP</u>	<u>Des. Year</u>	<u>Cons. Year</u>	<u>Fin. Year</u>	<u>Plan 06-10</u>
GENERAL FUND SUMMARY						
	GENERAL FUND SUMMARY					38,123,000 GO
						16,385,000 2OGO
						28,082,600 PAYG
						14,835,950 EXCIS
						21,970,100 1/8STX
						1,061,950 ESC
						- UESC
						- SA
						275,000 SWU
						18,637,750 CTY
						1,800,000 SSTX
						6,215,250 OCITY
						400,000 KDOT
						- ISTE A
						20,004,000 TEA21
						2,000,000 CDBG
						- OFED
						2,844,600 ERF
						- RECV
						- GCR
						4,115,000 SPR
						250,000 PRIV
						- ODF
						- OFIN
						<u>177,000,200</u>

*indicates project costs not included in plan totals

2006-2010 CAPITAL IMPROVEMENTS PROGRAM

Project Number	Project Description	2006-2010 PLAN					Plan 06-10
		Change From 2005-2009 CIP	Des. Year	Cons. Year	Fin. Year		
FIRE SERVICE FUND - PUBLIC BUILDINGS							
FB-0216	Generator - Station 4 Purchase of back-up power generator for Station 4.	No Change	2004	2004	2004	*	0 *GO
						*	0 *PAYG
						*	34,000 *ERF
						*	0 *RECV
						*	0 *OFIN
	Project Total					*	<u>34,000</u>
FB-0210	Generator - Station 5 Purchase of back-up power generator for Station 5.	No Change	2005	2005	2005	*	0 *GO
						*	0 *PAYG
						*	34,000 *ERF
						*	0 *RECV
						*	0 *OFIN
	Project Total					*	<u>34,000</u>
FB-0217	Generator - Administrative Offices Purchase of back-up power generator for the Administrative Offices.	No Change	2006	2006	2006		0 GO
							0 PAYG
							34,000 ERF
							0 RECV
							0 OFIN
	Project Total						<u>34,000</u>
FB-0848	Fire Training Center Concrete Apron Replacement The concrete apron has deteriorated beyond repair and needs to be replaced. Project is new to the 06-10 CIP.	New	2005	2006	2006		0 GO
							455,000 PAYG
							0 ERF
							0 RECV
							0 OFIN
	Project Total						<u>455,000</u>
FB-0874	Access Security System for Fire Department Facilities Replacement of current key/code security system with electronic card system to improve security.	New	2005	2006	2006		0 GO
							0 PAYG
							90,000 ERF
							0 RECV
							0 OFIN
	Project Total						<u>90,000</u>

*indicates project costs not included in plan totals

2006-2010 CAPITAL IMPROVEMENTS PROGRAM

Project Number	Project Description	2006-2010 PLAN				Plan 06-10
		Change From 2005-2009 CIP	Des. Year	Cons. Year	Fin. Year	
FIRE SERVICE FUND - PUBLIC BUILDINGS						
	FIRE SERVICE FUND - PUBLIC BUILDINGS					- GO
						- 20GO
					455,000	PAYG
						- EXCIS
						- 1/8STX
						- ESC
						- UESC
						- SA
						- SWU
						- CTY
						- SSTX
						- OCITY
						- KDOT
						- ISTEA
						- TEA21
						- CDBG
						- OFED
					124,000	ERF
						- RECV
						- GCR
						- SPR
						- PRIV
						- ODF
						- OFIN
						<u>579,000</u>

*indicates project costs not included in plan totals

2006-2010 CAPITAL IMPROVEMENTS PROGRAM

Project Number	Project Description	2006-2010 PLAN					Plan 06-10
		Change From 2005-2009 CIP	Des. Year	Cons. Year	Fin. Year		
FIRE SERVICE FUND - PUBLIC EQUIPMENT							
FE-0449	HAZMAT Truck Replacement Replacement of the 1990 HAZMAT Command Unit, fixed asset #8859.	No Change	2004	2004	2004	*	0 *GO
						*	0 *PAYG
						*	0 *CTY
						*	450,000 *ERF
						*	0 *RECV
						*	0 *OFIN
						*	<u>450,000</u>
FE-0748	Ambulance Replacement of 1998 ambulance, fixed asset #19344.	No Change	2004	2004	2004	*	0 *GO
						*	0 *PAYG
						*	0 *CTY
						*	0 *ERF
						*	0 *RECV
						*	140,000 *OFIN
						*	<u>140,000</u>
	Project Total					*	
FE-0450	Fire Truck Replacement Replace 1992 Pumper/Aerial Truck, fixed asset #12483.	No Change	2005	2005	2005	*	0 *GO
						*	0 *PAYG
						*	0 *CTY
						*	500,000 *ERF
						*	0 *RECV
						*	0 *OFIN
						*	<u>500,000</u>
FE-0735	Ambulance Replacement of ambulance currently owned by Johnson County Med-Act.	No Change	2005	2005	2005	*	0 *GO
						*	0 *PAYG
						*	0 *CTY
						*	160,000 *ERF
						*	0 *RECV
						*	0 *OFIN
						*	<u>160,000</u>
FE-0880	Fire Technology in Vehicles This project funds the installation of Mobile Data Terminals and an Automated Vehicle Location System in 20 Fire Department Vehicles to provide OPFD with state-of-the-art technology in the areas of communication and mapping.	New	2005	2005	2005	*	0 *GO
						*	0 *PAYG
						*	0 *CTY
						*	170,000 *ERF
						*	0 *RECV
						*	0 *OFIN
						*	<u>170,000</u>
	Project Total					*	

*indicates project costs not included in plan totals

2006-2010 CAPITAL IMPROVEMENTS PROGRAM

Project Number	Project Description	2006-2010 PLAN				
		Change From 2005-2009 CIP	Des. Year	Cons. Year	Fin. Year	Plan 06-10
FIRE SERVICE FUND - PUBLIC EQUIPMENT						
FE-0452	Fire Truck - Pumper 1995 Pierce Saber Pumper Truck, fixed asset #12239. This truck is a reserve unit and will be replaced in the reserve fleet with a pumper already owned by the City.	Remove	2006	2006	2006	0 GO 0 PAYG 0 CTY 0 ERF 0 RECV 0 OFIN
	Project Total					<u>0</u>
FE-0638	Fire Truck - Pumper Replace 1995 Pierce Saber Pumper Truck, fixed asset #12240. This truck is a reserve unit and will be replaced in the reserve fleet with a pumper already owned by the City.	Remove	2006	2006	2006	0 GO 0 PAYG 0 CTY 0 ERF 0 RECV 0 OFIN
	Project Total					<u>0</u>
FE-0629	Fire Truck - Pumper Replacement of 1996 Pierce Pumper Truck, fixed asset #14478.	No Change	2006	2006	2006	0 GO 0 PAYG 0 CTY 350,000 ERF 0 RECV 0 OFIN
	Project Total					<u>350,000</u>
FE-0639	Fire Truck - Aerial Replacement of 1997 Pierce Aerial, fixed asset #14915.	No Change	2007	2007	2007	0 GO 0 PAYG 0 CTY 800,000 ERF 0 RECV 0 OFIN
	Project Total					<u>800,000</u>
FE-0451	Hazardous Materials Utility Vehicle Replace 1994 Freightliner Hazardous Materials Truck, fixed asset #11567.	No Change	2008	2008	2008	0 GO 0 PAYG 0 CTY 350,000 ERF 0 RECV 0 OFIN
	Project Total					<u>350,000</u>

*indicates project costs not included in plan totals

2006-2010 CAPITAL IMPROVEMENTS PROGRAM

Project Number	Project Description	2006-2010 PLAN					Plan 06-10
		Change From 2005-2009 CIP	Des. Year	Cons. Year	Fin. Year		
FIRE SERVICE FUND - PUBLIC EQUIPMENT							
FE-0633	Ambulance Replacement of 2003 Ambulance, fixed asset #23769.	No Change	2008	2008	2008		0 GO 0 PAYG 0 CTY 140,000 ERF 0 RECV 0 OFIN
	Project Total						<u>140,000</u>
FE-0736	Fire Truck - Aerial Replacement of 1999 Quint 43 Aerial, fixed asset #19191.	No Change	2009	2009	2009		0 GO 0 PAYG 0 CTY 500,000 ERF 0 RECV 0 OFIN
	Project Total						<u>500,000</u>
FE-0737	Ambulance Replacement of 2003 Ambulance, fixed asset #24761.	No Change	2009	2009	2009		0 GO 0 PAYG 0 CTY 140,000 ERF 0 RECV 0 OFIN
	Project Total						<u>140,000</u>

*indicates project costs not included in plan totals

2006-2010 CAPITAL IMPROVEMENTS PROGRAM

<u>Project Number</u>	<u>Project Description</u>	<u>2006-2010 PLAN</u>				<u>Plan 06-10</u>
		<u>Change From 2005-2009 CIP</u>	<u>Des. Year</u>	<u>Cons. Year</u>	<u>Fin. Year</u>	
FIRE SERVICE FUND - PUBLIC EQUIPMENT						
	FIRE SERVICE FUND - PUBLIC EQUIPMENT					- GO
						- 20GO
						- PAYG
						- EXCIS
						- 1/8STX
						- ESC
						- UESC
						- SA
						- SWU
						- CTY
						- SSTX
						- OCITY
						- KDOT
						- ISTE A
						- TEA21
						- CDBG
						- OFED
					2,280,000	ERF
						- RECV
						- GCR
						- SPR
						- PRIV
						- ODF
						- OFIN
					<u>2,280,000</u>	

*indicates project costs not included in plan totals

2006-2010 CAPITAL IMPROVEMENTS PROGRAM

Project Number	Project Description	2006-2010 PLAN				Plan 06-10
		Change From 2005-2009 CIP	Des. Year	Cons. Year	Fin. Year	
SUMMARY - FIRE SERVICE FUND						
	SUBTOTAL					- GO
	SUMMARY - FIRE SERVICE FUND					- 20GO
					455,000	PAYG
					-	EXCIS
					-	1/8STX
					-	ESC
					-	UESC
					-	SA
					-	SWU
					-	CTY
					-	SSTX
					-	OCITY
					-	KDOT
					-	ISTEA
					-	TEA21
					-	CDBG
					-	OFED
					2,404,000	ERF
					-	RECV
					-	GCR
					-	SPR
					-	PRIV
					-	ODF
					-	OFIN
					<u>2,859,000</u>	

*indicates project costs not included in plan totals

2006-2010 CAPITAL IMPROVEMENTS PROGRAM

Project Number	Project Description	2006-2010 PLAN				
		Change From 2005-2009 CIP	Des. Year	Cons. Year	Fin. Year	Plan 06-10
PARKS & RECREATION: Golf Courses						
PR-0085	2005 Golf Course Improvements Improvements to the golf courses' grounds and facilities.	No Change	2005	2005	2005 *	843,500 *GCR
	Project Total				*	<u>843,500</u>
PR-0086	2006 Golf Course Improvements Improvements to the golf courses' grounds and facilities.	No Change	2006	2006	2006	923,000 GCR
	Project Total					<u>923,000</u>
PR-0087	2007 Golf Course Improvements Improvements to the golf courses' grounds and facilities.	No Change	2007	2007	2007	800,000 GCR
	Project Total					<u>800,000</u>
PR-0626	2008 Golf Course Improvements Improvements to the golf courses' grounds and facilities.	No Change	2008	2008	2008	629,600 GCR
	Project Total					<u>629,600</u>
PR-0731	2009 Golf Course Improvements Improvements to the golf courses' grounds and facilities.	No Change	2009	2009	2009	1,103,700 GCR
	Project Total					<u>1,103,700</u>
PR_0839	2010 Golf Course Improvements Improvements to the golf courses' grounds and facilities. New project to the 06-10 CIP.	New	2010	2010	2010	873,000 GCR
	Project Total					<u>873,000</u>

*indicates project costs not included in plan totals

2006-2010 CAPITAL IMPROVEMENTS PROGRAM

Project Number	Project Description	2006-2010 PLAN				Plan 06-10
		Change From 2005-2009 CIP	Des. Year	Cons. Year	Fin. Year	
PARKS & RECREATION: Golf Courses						
SUBTOTAL						
	PARKS & RECREATION: Golf Courses					- GO
						- 20GO
						- PAYG
						- EXCIS
						- 1/8STX
						- ESC
						- UESC
						- SA
						- SWU
						- CTY
						- SSTX
						- OCITY
						- KDOT
						- ISTE A
						- TEA21
						- CDBG
						- OFED
						- ERF
						- RECV
					4,329,300	GCR
						- SPR
						- PRIV
						- ODF
						- OFIN
					<u>4,329,300</u>	

*indicates project costs not included in plan totals

2006-2010 CAPITAL IMPROVEMENTS PROGRAM

Project Number	Project Description	2006-2010 PLAN					Plan 06-10
		Change From 2005-2009 CIP	Des. Year	Cons. Year	Fin. Year		
STORM DRAINAGE							
SD-0687	Milburn Fields Storm Drainage Improvements Stormwater enhancement project to alleviate flooding problems in the Milburn Fields neighborhood.	Revised Cost	2003	2005	2003	*	0 *GO
						*	0 *PAYG
						*	0 *SA
						*	230,000 *SWU
						*	700,000 *CTY
						*	<u>930,000</u>
SD-0688	Summerfield Storm Drainage Improvements Stormwater enhancement project to alleviate flooding problems in the Summerfield neighborhood.	Revised Cost	2003	2005	2003	*	0 *GO
						*	0 *PAYG
						*	0 *SA
						*	202,700 *SWU
						*	565,000 *CTY
					2005	*	0 *GO
						*	0 *PAYG
						*	0 *SA
						*	87,300 *SWU
						*	0 *CTY
	Project Total					*	<u>855,000</u>
SD-0689	103rd and Connell Storm Drainage Improvements Stormwater enhancement project to alleviate flooding problems at 103rd and Connell.	No Change	2003	2004	2004	*	0 *GO
						*	0 *PAYG
						*	0 *SA
						*	8,635 *SWU
						*	25,965 *CTY
	Project Total					*	<u>34,600</u>
SD-0645	Glenwood Storm Drainage Improvements Stormwater project to alleviate flooding problems at 67th to 69th near Walmer.	Revised Cost	2003	2004	2004	*	0 *GO
						*	0 *PAYG
						*	9,215 *SA
						*	70,785 *SWU
						*	199,600 *CTY
	Project Total					*	<u>279,600</u>
SD-0664	Negro Creek Bank Stabilization Bank stabilization project. The property owner is contributing 1/3 of the cost of the project.	No Change	2003	2004	2004	*	0 *GO
						*	0 *PAYG
						*	28,290 *SA
						*	56,580 *SWU
						*	0 *CTY
	Project Total					*	<u>84,870</u>

*indicates project costs not included in plan totals

2006-2010 CAPITAL IMPROVEMENTS PROGRAM

Project Number	Project Description	2006-2010 PLAN					Plan 06-10
		Change From 2005-2009 CIP	Des. Year	Cons. Year	Fin. Year		
STORM DRAINAGE							
SD-0595	2004 Storm Drainage Improvement Annual funding for storm drainage improvements. All funding for 2004 has been transferred to specific projects.	Remove	2003	2004	2004	*	0 *GO
						*	0 *PAYG
		SWU funding transferred to SD-0840				*	0 *SA
						*	0 *SWU
						*	0 *CTY
	Project Total					*	<u>0</u>
SD-0773	Countryshire II Bank Stabilization Bank Stabilization project at 11100 W. 119th Street. The property owner is contributing 1/3 of the cost of the project.	Revised Cost	2004	2004	2004	*	0 *GO
						*	0 *PAYG
						*	85,000 *SA
						*	195,000 *SWU
						*	0 *CTY
	Project Total					*	<u>280,000</u>
SD-0768	Stanley Storm Drainage Improvements Preliminary engineering study to determine feasibility of improvements at 152nd Street, east of Metcalf.	No Change	2004	2004	2004	*	0 *GO
						*	0 *PAYG
						*	0 *SA
						*	8,700 *SWU
						*	26,000 *CTY
	Project Total					*	<u>34,700</u>
SD-0410	2005 Storm Drainage Improvement Annual funding for storm drainage improvements. Project areas are yet to be determined .	Revised Cost	2004	2005	2005	*	0 *GO
						*	0 *PAYG
						*	0 *SA
						*	287,700 *SWU
						*	0 *CTY
	Project Total					*	<u>287,700</u>
SD-0854	2005 Preliminary Stormwater Engineering Studies Funding for preliminary engineering studies, required before the City can apply for SMAC funding. New project.	New	2005	2005	2005	*	0 *GO
						*	0 *PAYG
						*	0 *SA
						*	30,000 *SWU
						*	90,000 *CTY
	Project Total					*	<u>120,000</u>
SD-0877	Storm Drainage Improvements This project makes improvements near 148th Street, west of Hayes. New project in the 06-10 CIP.	New	2004	2005	2005	*	0 *GO
						*	0 *PAYG
						*	0 *SA
						*	95,000 *SWU
						*	0 *CTY
						*	0 *OFIN
	Project Total					*	<u>95,000</u>

*indicates project costs not included in plan totals

2006-2010 CAPITAL IMPROVEMENTS PROGRAM

Project Number	Project Description	2006-2010 PLAN				Plan 06-10
		Change From 2005-2009 CIP	Des. Year	Cons. Year	Fin. Year	
STORM DRAINAGE						
SD-0505	2006 Storm Drainage Improvement Annual funding for storm drainage improvements. Project areas are yet to be determined .	Revised Cost	2005	2006	2006	0 GO 0 PAYG 25,000 SA 295,000 SWU 0 CTY
	Project Total					<u>320,000</u>
SD-0840	79th & Grandview Stormdrainage Improvements Project alleviates flooding in the vicinity of Grandview from 79th to 80th. New project in 06-10 CIP.	New	2004	2006	2006	0 GO 0 PAYG 0 SA 225,000 SWU 670,000 CTY
	Project Total					<u>895,000</u>
SD-0855	2006 Preliminary Stormwater Engineering Studies Funding for preliminary engineering studies, required before the City can apply for SMAC funding. New project.	New	2006	2006	2006	0 GO 0 PAYG 0 SA 30,000 SWU 90,000 CTY
	Project Total					<u>120,000</u>
SD-0594	2007 Storm Drainage Improvement Annual funding for storm drainage improvements. Project areas are yet to be determined.	No Change	2006	2007	2007	0 GO 0 PAYG 25,000 SA 500,000 SWU 0 CTY
	Project Total					<u>525,000</u>
SD-0856	2007 Preliminary Stormwater Engineering Studies Funding for preliminary engineering studies, required before the City can apply for SMAC funding. New project.	New	2007	2007	2007	0 GO 0 PAYG 0 SA 30,000 SWU 90,000 CTY
	Project Total					<u>120,000</u>
SD-0619	2008 Storm Drainage Improvement Annual funding for storm drainage improvements. Project areas are yet to be determined.	No Change	2007	2008	2008	0 GO 0 PAYG 25,000 SA 500,000 SWU 0 CTY
	Project Total					<u>525,000</u>

*indicates project costs not included in plan totals

2006-2010 CAPITAL IMPROVEMENTS PROGRAM

Project Number	Project Description	2006-2010 PLAN				Plan 06-10
		Change From 2005-2009 CIP	Des. Year	Cons. Year	Fin. Year	
STORM DRAINAGE						
SD-0857	2008 Preliminary Stormwater Engineering Studies Funding for preliminary engineering studies, required before the City can apply for SMAC funding. New project.	New	2008	2008	2008	0 GO 0 PAYG 0 SA 30,000 SWU 90,000 CTY <u>120,000</u>
	Project Total					<u>120,000</u>
SD-0724	2009 Storm Drainage Improvement Annual funding for storm drainage improvements. Project areas are yet to be determined.	Revised Cost	2008	2009	2009	0 GO 0 PAYG 25,000 SA 500,000 SWU 0 CTY <u>525,000</u>
	Project Total					<u>525,000</u>
SD-0858	2009 Preliminary Stormwater Engineering Studies Funding for preliminary engineering studies, required before the City can apply for SMAC funding. New project.	New	2009	2009	2009	0 GO 0 PAYG 0 SA 30,000 SWU 90,000 CTY <u>120,000</u>
	Project Total					<u>120,000</u>
SD-0828	2010 Storm Drainage Improvement Annual funding for storm drainage improvements. Project areas are yet to be determined . New project.	New	2009	2010	2010	0 GO 0 PAYG 25,000 SA 500,000 SWU 0 CTY <u>525,000</u>
	Project Total					<u>525,000</u>
SD-0859	2010 Preliminary Stormwater Engineering Studies Funding for preliminary engineering studies, required before the City can apply for SMAC funding. New project.	New	2010	2010	2010	0 GO 0 PAYG 0 SA 30,000 SWU 90,000 CTY <u>120,000</u>
	Project Total					<u>120,000</u>

*indicates project costs not included in plan totals

2006-2010 CAPITAL IMPROVEMENTS PROGRAM

Project Number	Project Description	2006-2010 PLAN				Plan 06-10
		Change From 2005-2009 CIP	Des. Year	Cons. Year	Fin. Year	
STORM DRAINAGE						
SUBTOTAL						- GO
STORM DRAINAGE						- 20GO
						- PAYG
						- EXCIS
						- 1/8STX
						- ESC
						- UESC
					125,000	SA
					2,670,000	SWU
					1,120,000	CTY
						- SSTX
						- OCITY
						- KDOT
						- ISTEА
						- TEA21
						- CDBG
						- OFED
						- ERF
						- RECV
						- GCR
						- SPR
						- PRIV
						- ODF
						- OFIN
					<u>3,915,000</u>	<u>TOTAL</u>

*indicates project costs not included in plan totals

2006-2010 CAPITAL IMPROVEMENTS PROGRAM

Project Number	Project Description	2006-2010 PLAN				Plan 06-10
		Change From 2005-2009 CIP	Des. Year	Cons. Year	Fin. Year	
SUMMARY - ALL FUNDS						
	SUBTOTAL					38,123,000 GO
	SUMMARY - ALL FUNDS					16,385,000 20GO
						28,537,600 PAYG
						14,835,950 EXCIS
						21,970,100 1/8STX
						1,061,950 ESC
						0 UESC
						125,000 SA
						2,945,000 SWU
						19,757,750 CTY
						1,800,000 SSTX
						6,215,250 OCITY
						400,000 KDOT
						0 ISTE A
						20,004,000 TEA21
						2,000,000 CDBG
						0 OFED
						5,248,600 ERF
						0 RECV
						4,329,300 GCR
						4,115,000 SPR
						250,000 PRIV
						0 ODF
						0 OFIN
						<u>188,103,500</u>

*indicates project costs not included in plan totals