

# Population Profile (2010)

## Purpose

The analysis and projection of a community's population are necessary parts of nearly all major planning decisions. Both the private and public sectors use population data to decide such varied issues as where to locate a new bank or whether there is a need for a new church or temple. Besides knowing what the total population figure is now or will be in the future, a detailed description of some segment of the population is often important. For example, knowing how many school-age children live in an area may be more important to a school supply business than knowing the area's total population. In a way similar to the private sector's need to identify the market place, Overland Park uses population data to determine what public facilities and services should be provided to serve the residents who live, work, shop, and spend their leisure time in the City.

The Population Profile presents a picture of the past, analyzes trends and projects the future. Included in this element are: General Population Characteristics, Natural Change and Migration, Age Distribution, Distribution by Sex, Race and Ethnicity, Educational Characteristics, Household Characteristics, and Population Projections.

## General Population Characteristics

- The population of Overland Park grew from 28,085 in 1960 to 173,719 by mid-2009, an increase of 518.5 percent (Table PP-1).
- There have been three distinct periods of change in the City's population (Graph PP-1):
  - During the 1960s, the City's population boomed.

- From 1970 to 1980, there was relative stability in the City's population.
- A second surge of population growth began in the early 1980s and has continued to date.
- Johnson County, the fastest growing county in Kansas, accounted for 73 percent of the state's population growth between 2000 and 2008.
  - Overland Park accounted for 26.7 percent of the county's population growth during this same time period.

## Natural Change and Migration

An increase in the City's population is the result of the interaction of migration and natural increase.

- The growth experienced during the 1960s was most likely due to migration (both new growth and annexation) and, to a lesser extent, the postwar baby boom (natural increase).
- The very modest growth or actual population decline throughout the 1970s, is indicative of the baby boom generation leaving home and a decline in the role of in-migration during this period.
- Graphs PP-4, PP-5, PP-6, and PP-7 depict the mobility of Overland Park's population from 1975 to 2007.
  - According to the 1980 Census, the 1990 Census and the 2000 Census, approximately one-third of Overland Park's population had resided elsewhere just five years previously.
  - According to the 2008 American Community Survey, almost seven percent of Overland Park's population had resided elsewhere just one year previously.
- Migration is influenced by a number of factors

- A favorable economy
- Affordable housing
- Good schools and parks
- A community's local and regional reputation
- The age distribution of the population

When the level of migration is moderate, the rate of natural increase has greater importance in shaping current and future trends.

- Natural increase is the result of differences in the birth and death rates (Graphs PP-2 and PP-3).
- The age distribution of the population is strongly linked to the rate of natural increase.
- The fluctuation in Overland Park's rate of natural increase conforms to the national trends that followed first a tapering of the baby boom and then the formation of families by children of the baby boomers (Table PP-2).
  - The increasing birth rate during the 1980s and early 1990s was a reflection of the coming of age of the baby boomers.
  - The decreasing birth rate from 2000 to 2002 (Table PP-2) is an indication of the City's aging population and the baby boomers aging out of the child-bearing years.
  - Children of the baby boomers now account for the formation of families and a more stable birth rate since 2005.

## **Age Distribution**

- Overland Park's population has aged considerably (Graph PP-8).
  - In 1970, the median age was 26.1 years.
  - In 1980, the median age was 31.3 years.
  - In 1990, the median age was 33.9 years.
  - In 2000, the median age was 36.3 years.

- In 2008, the median age was 38.5 years.
- This change in the median age influences the natural rate of increase and the types of services and facilities that City's residents need and desire.
- A comparison of the population change between 1970 and 2008 by major age group shows some interesting trends (Graph PP-9 and Tables PP-4 through PP-8).
- The major age groups are defined as follows:
  - adolescent (ages 19 years and younger)
  - career age (20 years to 64 years of age)
  - retirees (65 years of age and older)
- Changes between 1970 and 2008 were not consistent for all the major age groups.
  - The rankings of the three groups of population from largest to smallest did not change.
  - The actual size and the percentage makeup underwent major changes:
    - ◆ The adolescent group declined as a percentage of the total population.
    - ◆ The career group increased as a percentage of the total population.
    - ◆ The retirees age group (65 years of age and over) experienced the greatest percentage change in population in each decade over the last 3 decades.
      - Growing by 84.6 percent between 1970 and 1980
      - Growing by 107.2 percent between 1980 and 1990

- Growing by 54.1 percent between 1990 and 2000
- Growing by 21.2 percent between 2000 and 2008
- In future years, changes in the age groups, particularly the adolescent and retirees groups, are expected to be even more dramatic than over the last 3 decades.
- The possibility of a continuing increase in the size of the retirees age group, coupled with stability or decline in the adolescent group, has implications for the future provision of educational, health care and other social services.

## **Distribution by Sex, Race, and Ethnicity**

- Like most other communities, Overland Park has a fairly equal sex ratio, with females slightly outnumbering males (Table PP-9).
- Table PP-10 shows that the racial composition of the City continues to undergo some change, though the population remains predominately white (88.0 percent).
  - The white population grew by 94.6 percent between 1970 and 2008, increasing by 72,178.
  - Overland Park's African American population grew by 360.1 percent during this same time period, but the increase in actual numbers (3,853) was small.
  - The "other" racial classification experienced the greatest increase, increasing by 642.8 percent between 1970 and 2008.
    - ◆ This classification includes primarily Asian or Pacific Islander in the City of Overland Park and represented 9.7 percent of the total population in 2008.

- In 1990, 2000, and 2008 Overland Park had a larger percentage Asian population than Johnson County or the Kansas City metropolitan area (Tables PP-11, PP-12, and PP-13).
- In actual numbers, Overland Park's Asian population increased from about one-eighth to about one-quarter of the total metropolitan area Asian population between 1990 and 2008.
- In 1990, 2000, and 2008 African Americans represented a smaller segment of Overland Park's population when compared to both Johnson County and the metropolitan area.
- Between 1990 and 2008, the number of Hispanic or Latino persons in Overland Park more than tripled.
- Between 1990 and 2008, the increase in Hispanic or Latino persons was even greater in Johnson County and in the metropolitan area as a whole (Tables PP-11 and PP-13).
- In 2008, the percentage of Overland Park's population that was identified as Hispanic or Latino (4.3 percent) was greater than the African American population (2.3 percent) but less than the Asian population (6.2 percent) (Table PP-11).

## **Educational Characteristics**

- According to the 2000 Census of Population and the 2008 American Community Survey, the average Overland Park resident is not only older than a decade ago, but also better educated.
- School enrollment in elementary through high school has fluctuated over the decades (Table PP-14).
- School enrollment in college grew from 1970 to 1990, declined by 2000, and increased significantly by 2008.

- Preprimary enrollment is up 90.3 percent since 1970, as compared to an increase of 40.6 percent at the elementary through high school level.
- Enrollment in universities and colleges saw the largest percentage increase between 1970 and 2008 (405.1 percent increase).
  - The growth in the number of college students has been greater than the population growth of age groups who attend college.
  - Some of the increase in college enrollment may be due to the quality institutes of higher education, Johnson County Community College and the University of Kansas Regents Center, which have opened since 1970.
  - Additionally, a nationwide trend indicates older adults are returning to school to further their education, either out of the necessity to become more competitive in the job market or for personal enrichment.
- Between 1970 and 2008, a noticeable increase in educational attainment is evident and Overland Park leads both the county and the metropolitan area in the percentage of residents that are high school graduates (PP-15).
  - In 1970, 85.3 percent of residents twenty-five years old and over were high school graduates.
  - In 2008, 97.1 percent of residents twenty-five years old and over were high school graduates.
- Overland Park also leads both the county and the metropolitan area in the percentage of residents with degrees in higher education (Table PP-16).
  - In 2008, 35.3 percent of residents twenty-five years old and over had bachelors' degrees and 20.8 percent had graduate or professional degrees.

## Household Characteristics

- The number of households increased by 48,063, a 217.9 percent increase, between 1970 and 2008 (Table PP-17).
- With the number of households increasing at a greater rate than the population, the number of persons per household has declined (Table PP-17).
  - In 1970, the average household size in the City was 3.45 persons.
  - By 1990, the average City household size had dropped to 2.47 persons and remained at 2.47 persons in 2000.
  - By 2008, the average City household size had dropped to 2.39 persons.
- A four-fold increase in the number of single person households in the City is in keeping with the declining average household size (Graph PP-11).
- The composition of households in Overland Park differs from county and state household composition as seen in Table PP-18.
  - In Johnson County and the State of Kansas there are more 3+ person households whereas in Overland Park the greatest percentage of households (36.4 percents) are 2-person households.

## Population Forecasts

### Forecast Background

The slow growth pattern experienced by the City in the 1970s and early 1980s was replaced in the latter half of the 1980s by a pattern of accelerated growth, which has continued since (Graph PP-12) though growth has slowed since 2003 (Table PP-1). The resurgence of growth was probably triggered by

certain economic and social trends discussed earlier. These trends include: a large influx of jobs into the City, a boom in office and residential construction, increased migration, increases in the career age group, and a drop in household size. The strength of the single-family residential market and quality and quantity of educational opportunities continued to draw new residents to Overland Park. The slower growth rates since 2003 can no doubt be attributed at least in part to changes in the local and national economy.

- The population forecasts presented in this section are based on historic trends.
- A prominent historic trait of the City's population is that when change does occur, change carries over for several years and occurs gradually, not in severe jumps or drops.
- The forecasts assume that the trends of the past few years will carry forward for the next several years.
- These forecasts presented should be considered an approximation within the range of the upper and lower limits, not an absolute value.
- Factors which can influence the accuracy of these forecasts, particularly in the later years include:
  - An increased birth rate
  - Continued decreasing household size
  - The duration and extent of the current economic crisis as it has affected both jobs and housing
  - A boost in mortgage interest rates
  - A boom in the metropolitan area's economy
  - A return to significant local construction activity.

## **City Forecast**

- Overland Park's population is expected to continue to grow through 2014 at a rate similar to that experienced since the mid-1980s (Graphs PP-12, PP-13 and PP-14).

- The City is expected to surpass 180,000 in population by the middle of 2012 and reach over 185,000 by 2014 (Graph PP-14).
- A factor that can be relevant in the short-term forecasts is build-out of the readily available land for residential development in the City.
  - Not a factor in the forecasted time frame
- The City has a good reserve of land for residential development, but some of this property currently lacks the infrastructure necessary for anticipated development.
- Because of this and other factors, the anticipated year of build-out is very difficult to forecast.
- The figures on Map 1 showing the anticipated ultimate population assume certain residential densities and persons per household.
- Change in the City's ultimate population could result from:
  - Change in residential densities
  - Change in the number of persons per household
  - Change in the amount of land available for residential development

## **County Forecast**

- Johnson County's population is expected to continue to grow at a rate paralleling that of Overland Park (Graphs PP-15 and PP-16).
- In 2014, the City will account for approximately one-third of the county's population (Graphs PP-14 and PP-16).

## **Forecasts in the Annual Development Report**

- Refer to the most recent update of the Annual Development Report for the most accurate and up-to-date population forecasts.

## **Summary**

Overland Park's population has been characterized by three distinct periods of change. During the 1960s, the City grew rapidly, increasing by nearly 50,000 by the end of the decade. The 1970s was a period of population stabilization, which was followed by a second surge of population growth from the mid to late 1980s to the present.

The most significant changes that have occurred in the City's population over the last twenty years and are projected to continue for at least another decade are the increase in median age of the population and the decrease in household size. These changes have implications for a variety of services including health care, housing, recreation, and education among others.

## Table PP-1

### Overland Park Population Change 1960 to 1989

Year	Population	Percentage Growth
1960	28,085	n.a.
1961	35,812	27.5%
1962	40,796	13.9%
1963	45,813	12.3%
1964	51,103	11.5%
1965	56,395	10.4%
1966	61,394	8.9%
1967	65,890	7.3%
1968	73,641	11.8%
1969	75,028	1.9%
1970	77,934	3.9%
1971	79,458	2.0%
1972	81,306	2.3%
1973	82,726	1.7%
1974	82,365	-0.4%
1975	82,035	-0.4%
1976	82,391	0.4%
1977	82,802	0.5%
1978	82,400	-0.5%
1979	81,271	-1.4%
1980	82,487	1.5%
1981	83,374	1.1%
1982	84,262	1.1%
1983	86,720	2.9%
1984	89,178	2.8%
1985	92,844	4.1%
1986	96,510	3.9%
1987	101,685	5.4%
1988	106,860	5.1%
1989	109,591	2.6%

## Table PP-1 continued

### Overland Park Population Change 1990 to 2009

Year	Population	Percentage Growth
1990	111,790	2.0%
1991	115,548	3.4%
1992	118,848	2.9%
1993	122,581	3.1%
1994	126,079	2.9%
1995	128,172	1.7%
1996	131,216	2.4%
1997	135,029	2.9%
1998	139,685	3.4%
1999	144,520	3.5%
2000	149,080	3.2%
2001	154,335	3.5%
2002	158,462	2.7%
2003	160,338	1.2%
2004	162,585	1.4%
2005	164,441	1.1%
2006	166,285	1.1%
2007	168,919	1.6%
2008	171,231	1.4%
2009	173,719	1.5%

Note: Population as of July 1 except for 1970, 1980, 1990  
& 2000 which are as of April 1st.  
The 1999 and 2009 population figures are City  
estimates, not Census estimates.

Source: U.S. Census, County and City

**Table PP-2**

**Birth Rate, Death Rate and Rate of Natural Increase  
City of Overland Park  
2000-2008**

<b>Year</b>	<b>Birth Rate</b>	<b>Death Rate</b>	<b>Rate of Natural Increase*</b>
2000	14.4	6.2	8.2
2001	13.7	6.7	7.0
2002	13.2	6.5	6.7
2003	13.7	6.5	7.2
2004	13.5	5.8	7.7
2005	13.1	6.6	6.5
2006	13.1	6.6	6.5
2007	12.8	6.1	6.7
2008	13.2	6.5	6.7

5-Year Birth Rate – 13.1

5-Year Death Rate – 6.3

\*Natural Increase: Live births minus total deaths of a population within a given year. Rates per 1,000 population.

Source: Kansas Department of Health and Environment

Table PP-3

**Population Change by Major Age Groups  
1970, 1980, 1990, 2000, & 2008**

<b>Major Age Group</b>	<b>Population 1970</b>	<b>Percent of Total</b>	<b>Population 1980</b>	<b>Percent of Total</b>	<b>Population 1990</b>	<b>Percent of Total</b>	<b>Population 2000</b>	<b>Percent of Total</b>	<b>Population 2008</b>	<b>Percent of Total</b>
Adolescent	32,445	42.3%	25,749	31.5%	30,013	26.8%	41,979	28.15%	44,076	26.1%
Career	41,288	53.9%	50,699	62.0%	70,720	63.3%	90,067	60.42%	104,071	61.7%
Retirees	2,890	3.8%	5,336	6.5%	11,057	9.9%	17,034	11.43%	20,641	12.2%
<b>Total</b>	<b>76,623</b>	<b>100.0%</b>	<b>81,784</b>	<b>100.0%</b>	<b>111,790</b>	<b>100.0%</b>	<b>149,080</b>	<b>100.0%</b>	<b>168,788</b>	<b>100.0%</b>

Adolescent – 19 years of age and younger

Career – 20 to 64 years of age

Retirees – 65 years of age and over

1970 Median Age – 26.1

1980 Median Age – 31.3

1990 Median Age – 33.9

2000 Median Age – 36.3

2008 Median Age – 38.5

Source: U.S. Department of Commerce, Bureau of the Census

**Table PP-4**

**Comparison of Population Change by Major Age Groups  
1970 and 1980**

<b>Major Age Group</b>	<b>Change Between 1970 and 1980</b>	
	<b>Change in Population by Age Group</b>	<b>Percent Change in Population by Age Group</b>
Adolescent	(6,696)	-20.6%
Career	9,411	22.8%
Retirees	2,446	84.6%

Adolescent – 19 years of age and younger

Career – 20 to 64 years of age

Retirees – 65 years of age and over

Source: U.S. Department of Commerce, Bureau of the Census

**Table PP-5**

**Comparison of Population Change by Major Age Groups  
1980 and 1990**

<b>Major Age Group</b>	<b>Change Between 1980 and 1990</b>	
	<b>Change in Population by Age Group</b>	<b>Percent Change in Population by Age Group</b>
Adolescent	4,264	16.6%
Career	20,021	39.5%
Retirees	5,721	107.2%

Adolescent – 19 years of age and younger

Career – 20 to 64 years of age

Retirees – 65 years of age and over

Source: U.S. Department of Commerce, Bureau of the Census

**Table PP-6**

**Comparison of Population Change by Major Age Groups  
1990 and 2000**

<b>Major Age Group</b>	<b>Change Between 1990 and 2000</b>	
	<b>Change in Population by Age Group</b>	<b>Percent Change in Population by Age Group</b>
Adolescent	11,966	39.9%
Career	19,347	27.4%
Retirees	5,977	54.1%

Adolescent – 19 years of age and younger

Career – 20 to 64 years of age

Retirees – 65 years of age and over

Source: U.S. Department of Commerce, Bureau of the Census

**Table PP-7**

**Comparison of Population Change by Major Age Groups  
2000 and 2008**

<b>Major Age Group</b>	<b>Change Between 2000 and 2008</b>	
	<b>Change in Population by Age Group</b>	<b>Percent Change in Population by Age Group</b>
Adolescent	2,097	5.0%
Career	14,004	15.5%
Retirees	3,607	21.2%

Adolescent – 19 years of age and younger

Career – 20 to 64 years of age

Retirees – 65 years of age and over

Source: U.S. Department of Commerce, Bureau of the Census

## Table PP-8

### Comparison of Population Change by Major Age Groups 1970 and 2008

Major Age Group	Change Between 1970 and 2000	
	Change in Population by Age Group	Percent Change in Population by Age Group
Adolescent	11,631	35.8%
Career	62,783	152.1%
Retirees	17,751	614.2%

Adolescent – 19 years of age and younger

Career – 20 to 64 years of age

Retirees – 65 years of age and over

Source: U.S. Department of Commerce, Bureau of the Census

**Table PP-9**

**Comparison of Population Change by Sex  
1970, 1980, 1990, 2000, & 2008**

<b>Sex</b>	<b>Population 1970</b>	<b>Percent of Total</b>	<b>Population 1980</b>	<b>Percent of Total</b>	<b>Population 1990</b>	<b>Percent of Total</b>	<b>Population 2000</b>	<b>Percent of Total</b>	<b>Population 2008</b>	<b>Percent of Total</b>
Male	37,377	48.8%	39,253	48.0%	43,395	47.7%	72,170	48.4%	82,096	48.6%
Female	39,246	51.2%	42,531	52.0%	58,495	52.8%	76,910	51.6%	86,692	51.4%
Total	76,623	100.0%	81,784	100.0%	111,790	100.0%	149,080	100.0%	168,788	100.0%

Source: U.S. Department of Commerce, Bureau of the Census

**Table PP-10**

**Comparison of Population Change by Race  
1970, 1980, 1990, 2000, & 2008**

<b>Race</b>	<b>Population 1970</b>	<b>Percent of Total</b>	<b>Population 1980</b>	<b>Percent of Total</b>	<b>Population 1990</b>	<b>Percent of Total</b>	<b>Population 2000</b>	<b>Percent of Total</b>	<b>Population 2008</b>	<b>Percent of Total</b>
White	76,265	99.6%	79,651	97.4%	106,648	95.4%	135,137	90.6%	148,443	88.0%
African Am.	107	0.1%	721	0.9%	2,051	1.8%	3,801	2.5%	3,960	2.3%
Other	251	0.3%	1,412	1.7%	3,091	2.8%	10,142	6.9%	16,385	9.7%
Total	76,623	100.0%	81,784	100.0%	111,790	100.0%	149,080	100.0%	168,788	100.0%
Hispanic or Latino (of any race)*					2,198	2.0%	5,620	3.8%	7,333	4.3%

\*Prior to 1990, the Census Bureau reported Hispanic or Latino as a separate race.

Source: U.S. Department of Commerce, Bureau of the Census

**Table PP-11**

**A Comparison of Race and Ethnicity  
Overland Park, Johnson County & the Metro Area  
1990**

<b>Race</b>	<b>Overland Park</b>		<b>Johnson County</b>		<b>Metro Area</b>	
	<b>Persons</b>	<b>Percent of Total</b>	<b>Persons</b>	<b>Percent of Total</b>	<b>Persons</b>	<b>Percent of Total</b>
White	106,648	95.4%	338,770	95.4%	1,320,564	84.3%
African American	2,051	1.8%	6,917	1.9%	200,508	12.8%
Asian	2,145	1.9%	5,840	1.6%	17,444	1.1%
Other	946	0.9%	3,527	1.1%	27,764	1.8%
Total	111,790	100.0%	355,054	100.0%	1,566,280	100.0%
Hispanic or Latino (of any race)	2,198	2.0%	7,005	2.0%	45,227	2.9%

Source: U.S. Department of Commerce, Bureau of the Census

**Table PP-12**

**A Comparison of Race and Ethnicity  
Overland Park, Johnson County & the Metro Area  
2000**

<b>Race</b>	<b>Overland Park</b>		<b>Johnson County</b>		<b>Metro Area</b>	
	<b>Persons</b>	<b>Percent of Total</b>	<b>Persons</b>	<b>Percent of Total</b>	<b>Persons</b>	<b>Percent of Total</b>
White	135,137	90.6%	410,990	91.1%	1,435,388	80.8%
African American	3,801	2.5%	11,780	2.6%	226,503	12.8%
Asian	5,703	3.8%	12,768	2.8%	28,654	1.6%
Other	4,439	3.1%	15,548	3.5%	85,517	4.8%
Total	149,080	100.0%	451,086	100.0%	1,776,062	100.0%
Hispanic or Latino (of any race)	5,620	3.8%	17,957	4.0%	92,910	5.2%

Source: U.S. Department of Commerce, Bureau of the Census

**Table PP-13**

**A Comparison of Race and Ethnicity  
Overland Park, Johnson County & the Metro Area  
2008**

<b>Race</b>	<b>Overland Park</b>		<b>Johnson County</b>		<b>Metro Area</b>	
	<b>Persons</b>	<b>Percent of Total</b>	<b>Persons</b>	<b>Percent of Total</b>	<b>Persons</b>	<b>Percent of Total</b>
White	148,443	88.0%	469,699	87.9%	1,624,164	81.2%
African American	3,960	2.3%	20,137	3.8%	230,214	11.5%
Asian	10,393	6.2%	21,180	4.0%	40,897	2.0%
Other	5,992	3.5%	23,077	4.3%	105,799	5.3%
Total	168,788	100.0%	534,093	100.0%	2,001,074	100.0%
Hispanic or Latino (of any race)	7,333	4.3%	32,576	6.1%	144,800	7.2%

Source: U.S. Department of Commerce, Bureau of the Census

**Table PP-14**

**A Comparison of Overland Park's School Enrollment  
Between 1970 and 2008**

<b>Education Level</b>	<b>1970 Enrollment</b>	<b>1980 Enrollment</b>	<b>1990 Enrollment</b>	<b>2000 Enrollment</b>	<b>2008 Enrollment</b>	<b>Change in Enrollment 1970-2008</b>	<b>Percent Change 1970-2008</b>
Preprimary	2,969	2,774	3,348	6,312	5,649	2,680	90.3%
Elementary & High School	21,039	16,894	17,514	25,129	29,586	8,547	40.6%
College	2,272	4,322	8,048	7,552	11,471	9,199	405.1%
Total	26,280	23,990	28,910	38,993	46,706	20,426	77.7%

Source: U. S. Department of Commerce, Bureau of the Census

**Table PP-15**

**Comparison of the Percent Change in High School Graduates  
Between 1970 and 2008  
For Persons 25 Years Old and Over**

<b>Community</b>	<b>1970</b>	<b>1980</b>	<b>1990</b>	<b>2000</b>	<b>2008</b>
Overland Park	85.3%	91.1%	94.1%	95.8%	97.1%
Johnson County	79.6%	88.8%	92.9%	94.9%	96.0%
Kansas City Metro Area	60.1%	74.1%	82.3%	86.7%	90.1%

Source: U. S. Department of Commerce, Bureau of the Census

**Table PP-16**

**Educational Attainment  
2008  
For Persons 25 Years Old and Over**

<b>Community</b>	<b>Bachelors Degree</b>	<b>% of Total</b>	<b>Graduate/ Professional Degree</b>	<b>% of Total</b>	<b>Total Population Over 25</b>
Overland Park	40,462	35.3%	23,821	20.8%	114,508
Johnson County	118,023	33.7%	62,588	17.9%	350,049
KC Metro Area	269,879	20.5%	149,389	11.4%	1,316,095

Source: U.S. Department of Commerce, Bureau of the Census

**Table PP-17**

**Comparison of the Change in Overland Park's  
General Household Characteristics  
Between 1970 and 2008**

	<b>1970</b>	<b>1980</b>	<b>1990</b>	<b>2000</b>	<b>2008</b>	<b>Change Between 1970 and 2008</b>	
						<b>Change in Number</b>	<b>Percent Change</b>
Number of Households	22,061	29,646	44,936	59,703	70,124	48,063	217.9%
Population	76,623	81,784	111,790	149,080	168,788	92,165	120.3%
Persons per Household	3.45	2.74	2.47	2.47	2.39		

Source: U.S. Department of Commerce, Bureau of the Census

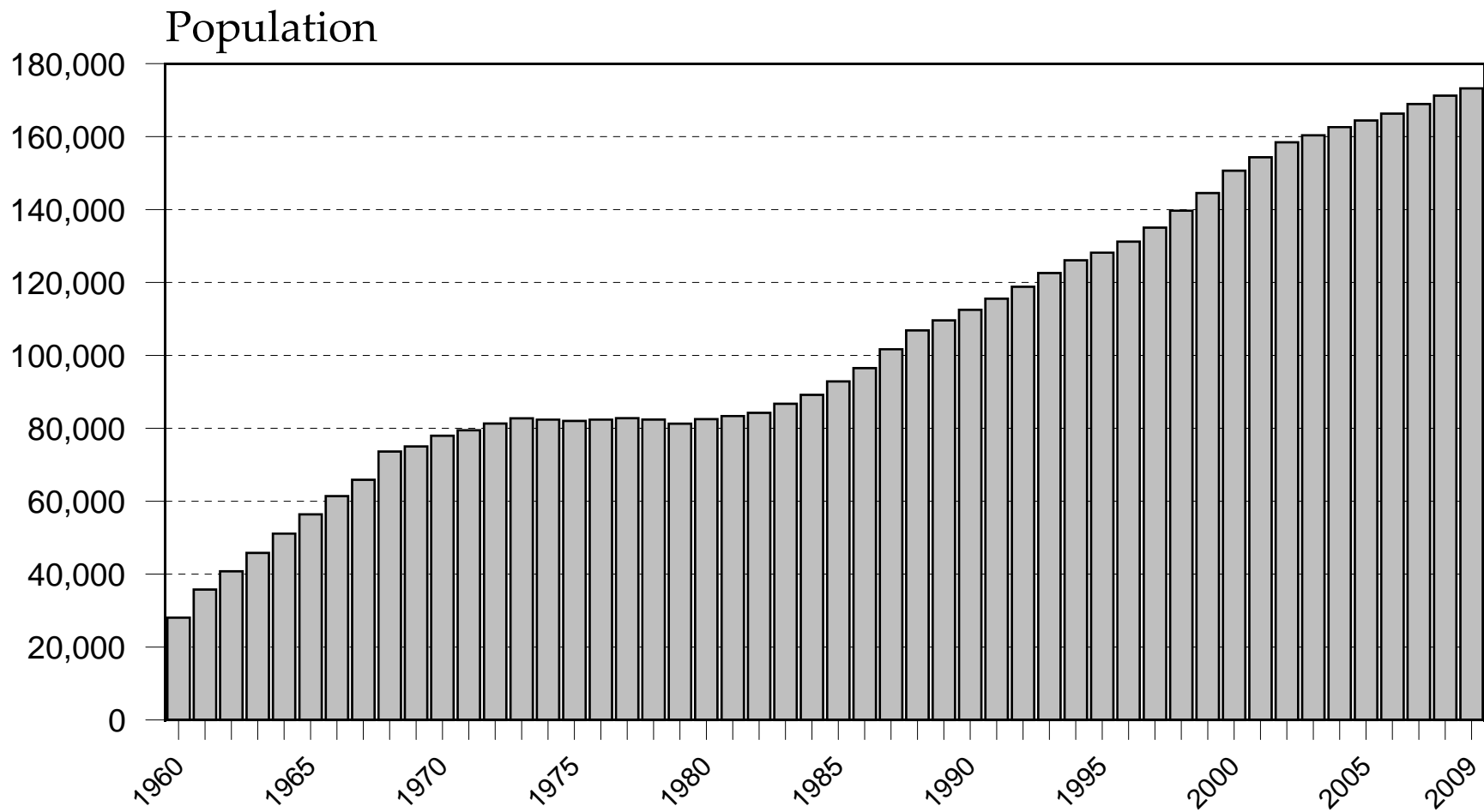
**Table PP-18**

**A Comparison of Household Composition  
Overland Park, Johnson County, and State of Kansas  
2008**

	1-Person Household		2-Person Household		3+ Person Household		Total Number Of Households
	Number Of Households	Percentage Of Households	Number Of Households	Percentage Of Households	Number Of Households	Percentage Of Households	
Overland Park	21,030	30.0%	25,512	36.4%	23,582	33.6%	70,124
Johnson County	53,971	26.0%	74,811	36.0%	78,956	38.0%	207,738
Kansas	314,126	28.3%	391,310	35.2%	405,213	36.5%	1,110,829

Source: U.S. Department of Commerce, Bureau of the Census

# Graph PP-1 Population Change 1960 to 2009



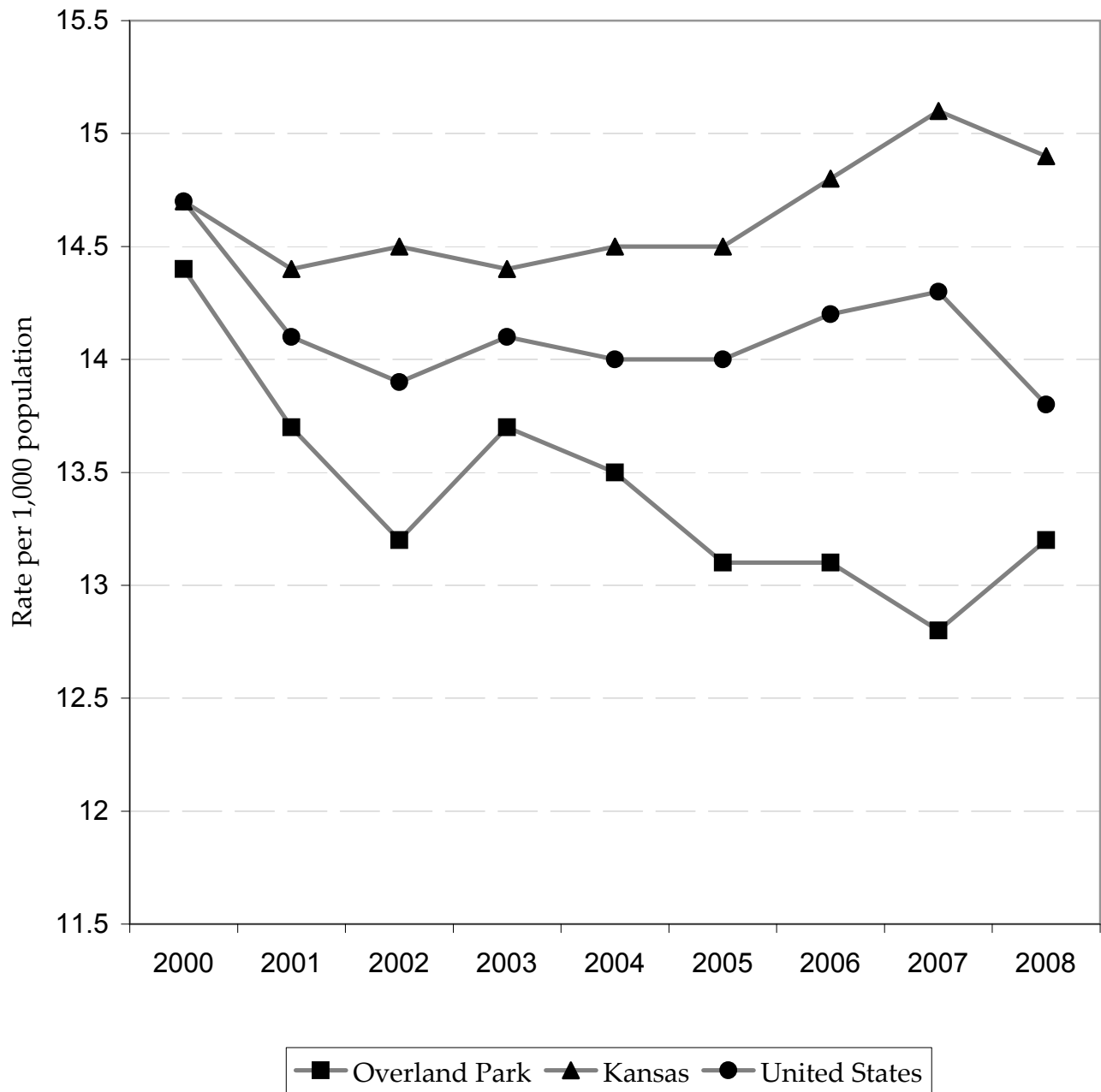
Note: Population as of July 1st except for the years 1970 and 1980.  
The 2009 population figure is a City estimate, not a Census estimate.

Sources: U.S. Census, County and City

# Graph PP-2

## Birth Rates - 2000 through 2008

### Overland Park, Kansas, and the United States

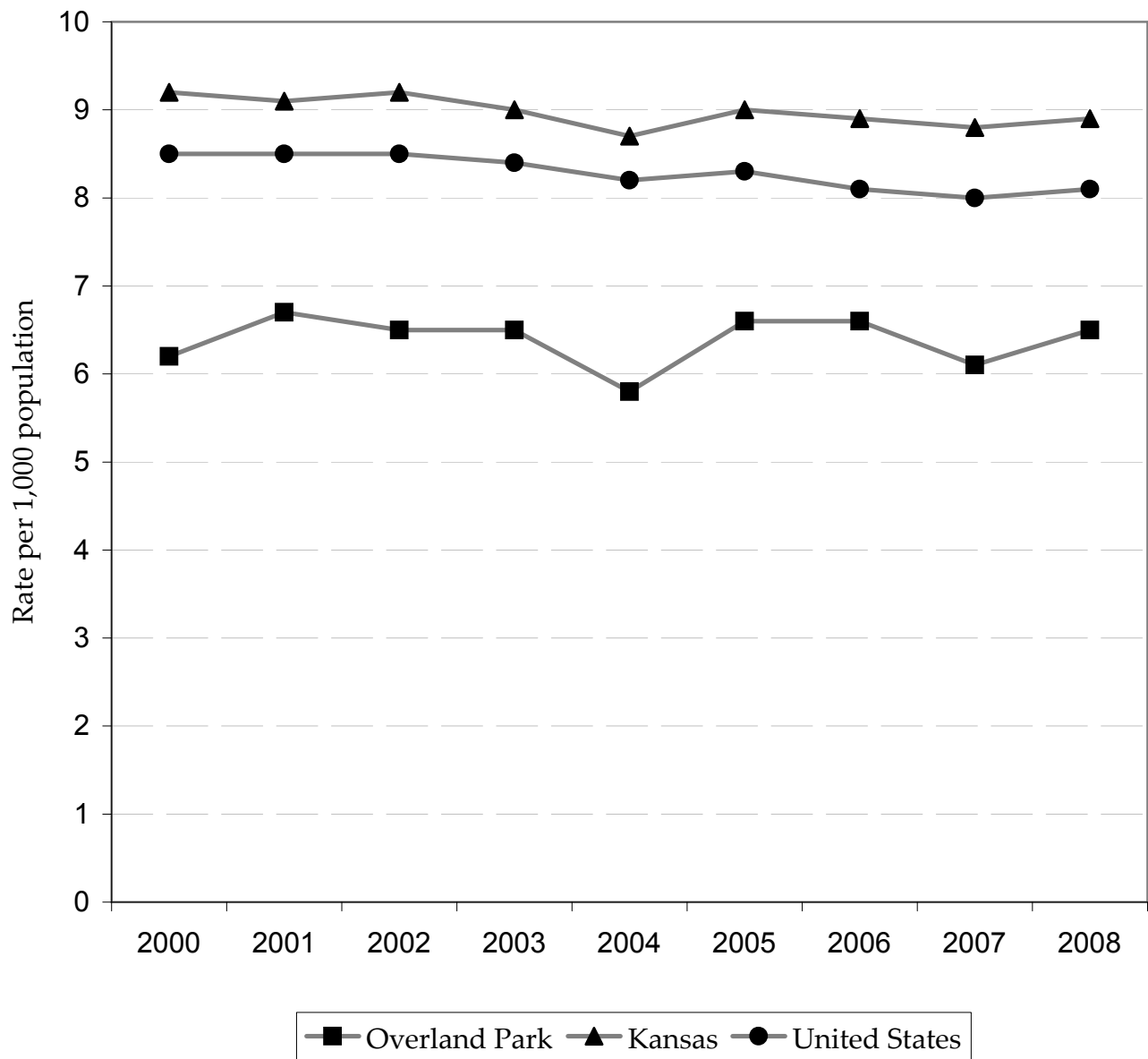


Source: Kansas Department of Health and Environment

# Graph PP-3

## Death Rates - 2000 through 2008

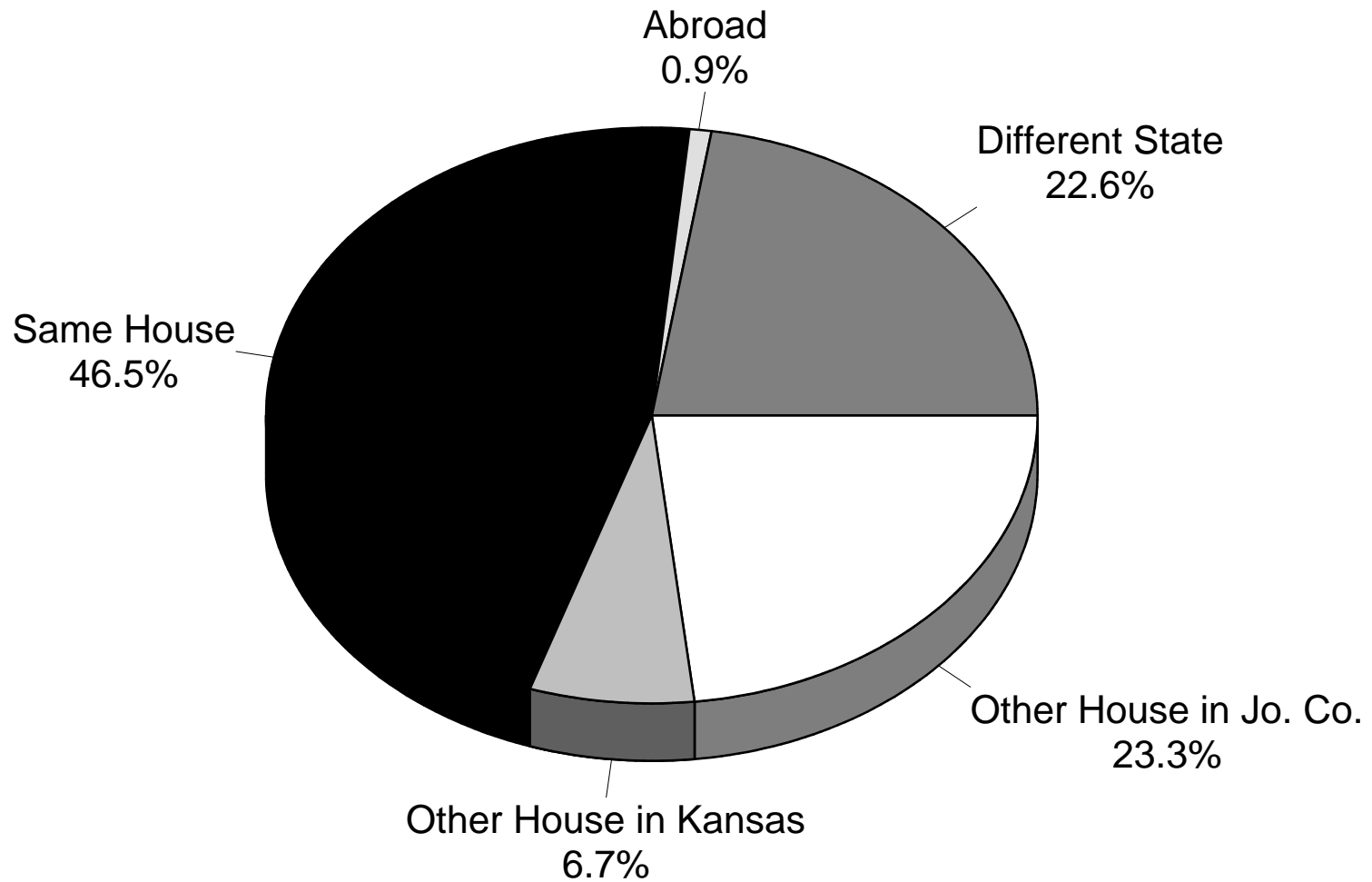
### Overland Park, Kansas, and the United States



Source: Kansas Department of Health and Environment

# Graph PP-4

## Where Overland Park Residents Lived in 1975 Persons 5 Years and Older - 76,882

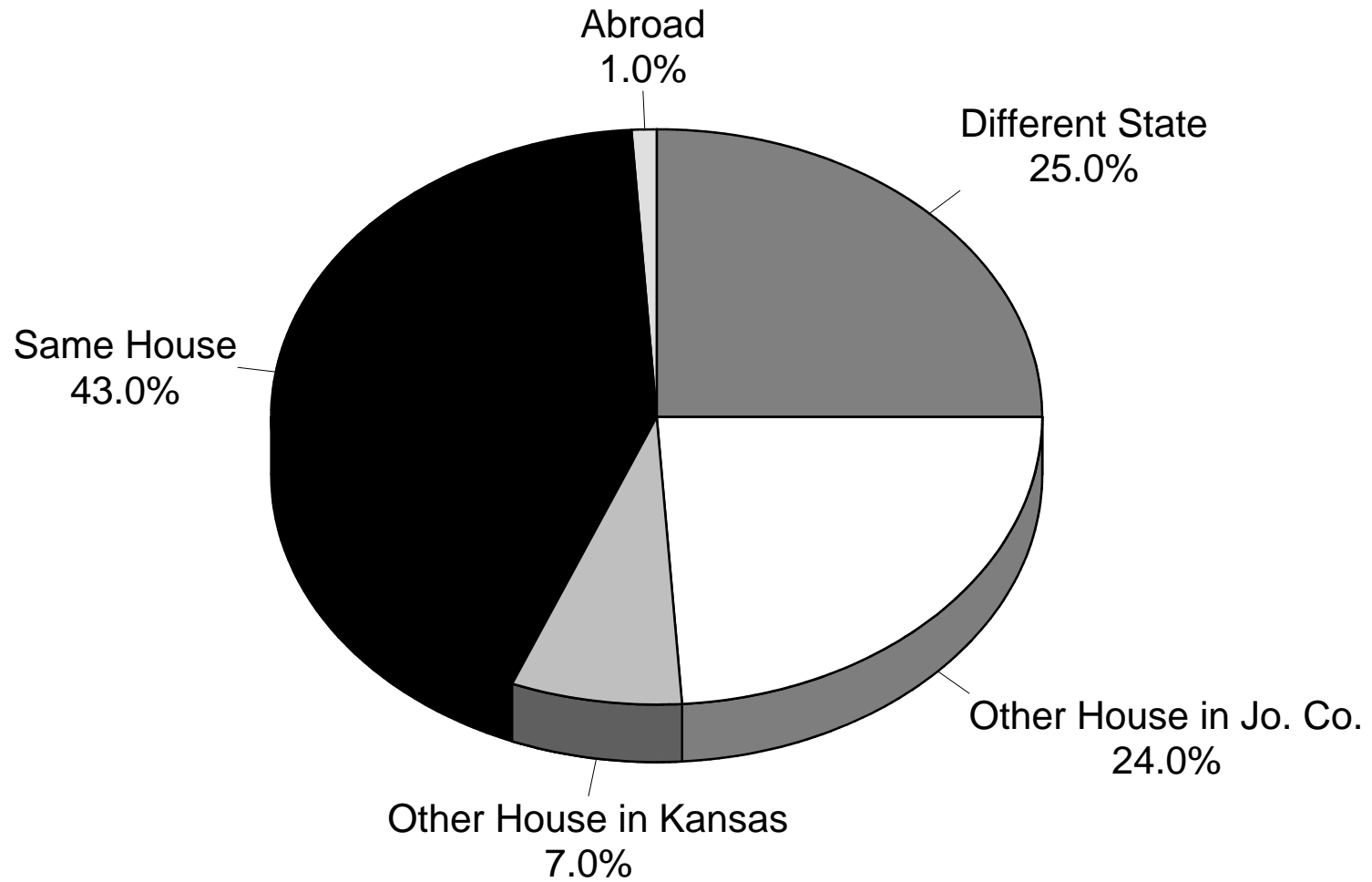


Source: 1980 U.S. Census

# Graph PP-5

## Where Overland Park Residents Lived in 1985

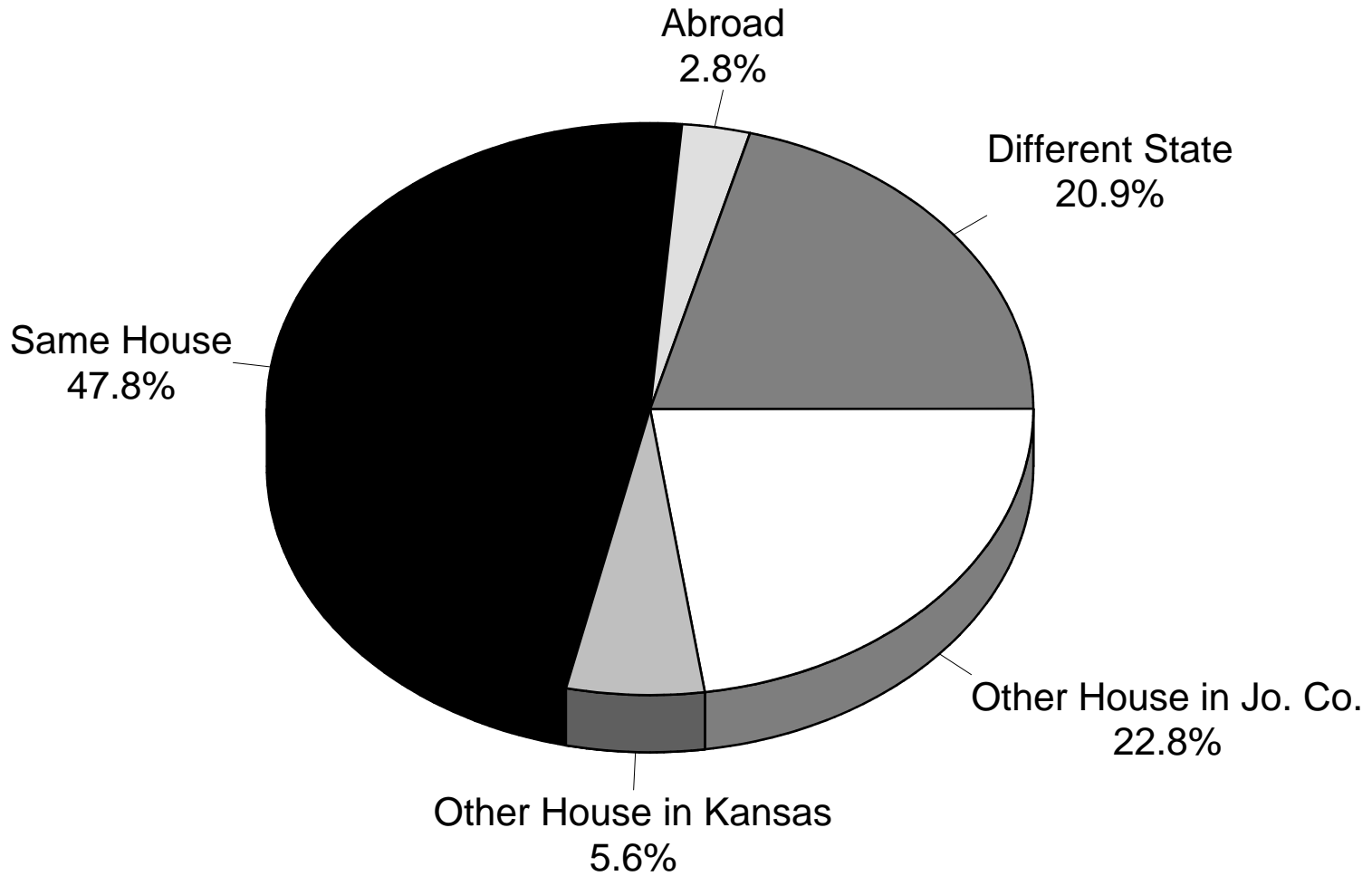
### Persons 5 Years and Older - 103,747



Source: 1990 U.S. Census

# Graph PP-6

## Where Overland Park Residents Lived in 1995 Persons 5 Years and Older - 138,240

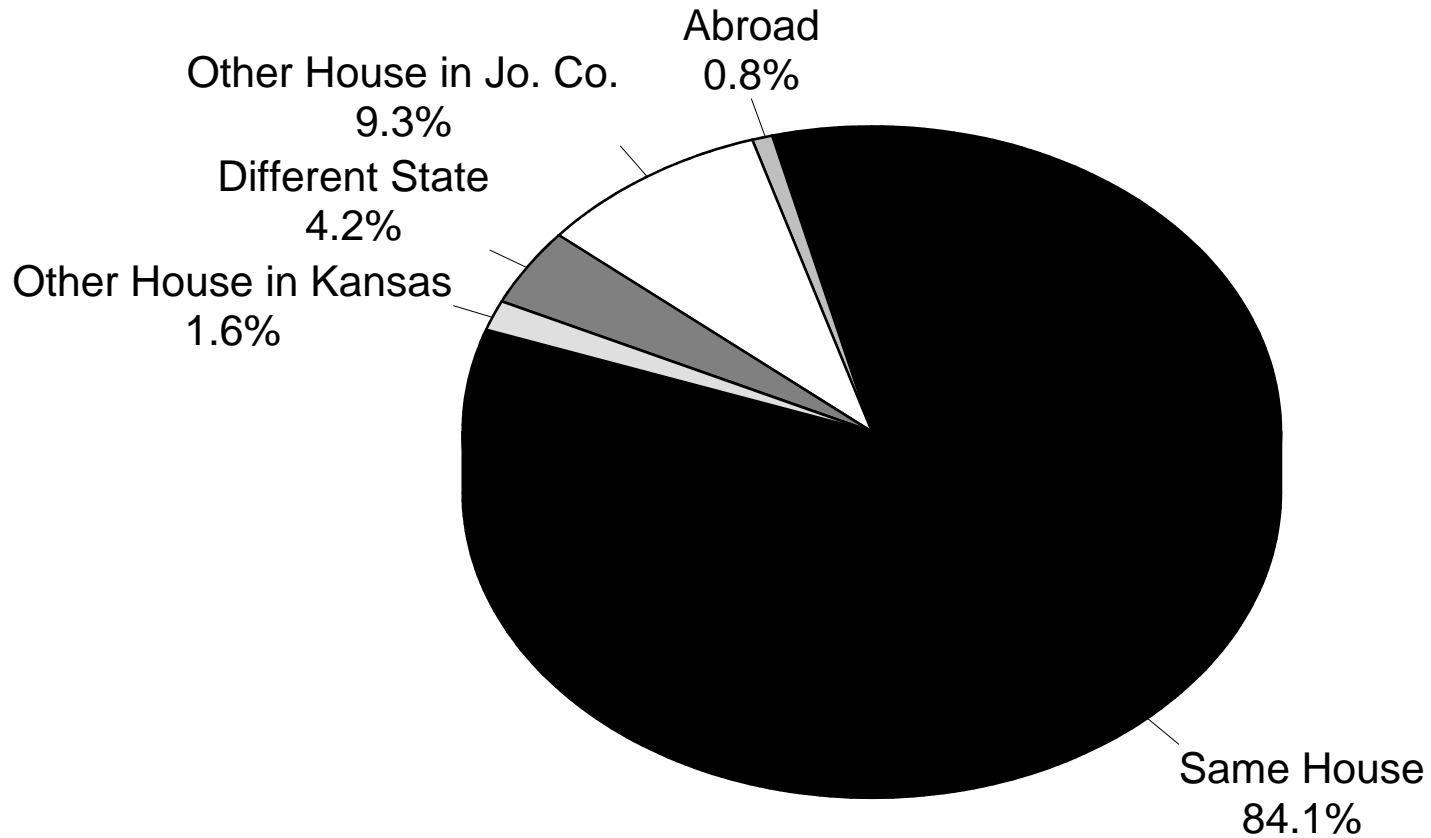


Source: 2000 U. S. Census

# Graph PP-7

## Recent Mobility

Where Overland Park Residents Lived in 2007  
Persons 1 Year and Older - 167,446



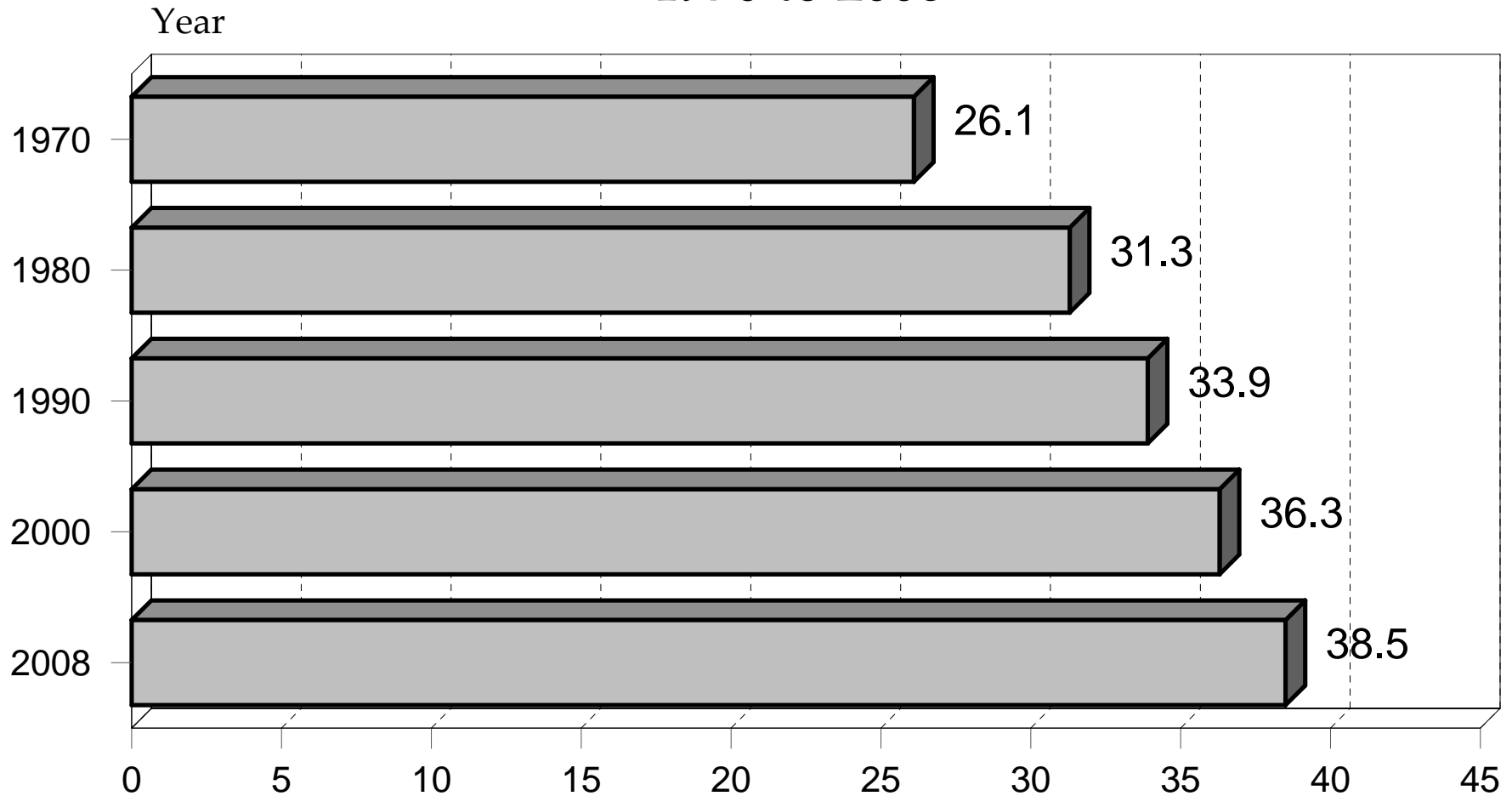
Source: 2008 American Community Survey (ACS)

# Graph PP-8

## Change in Median Age

### City of Overland Park

#### 1970 to 2008



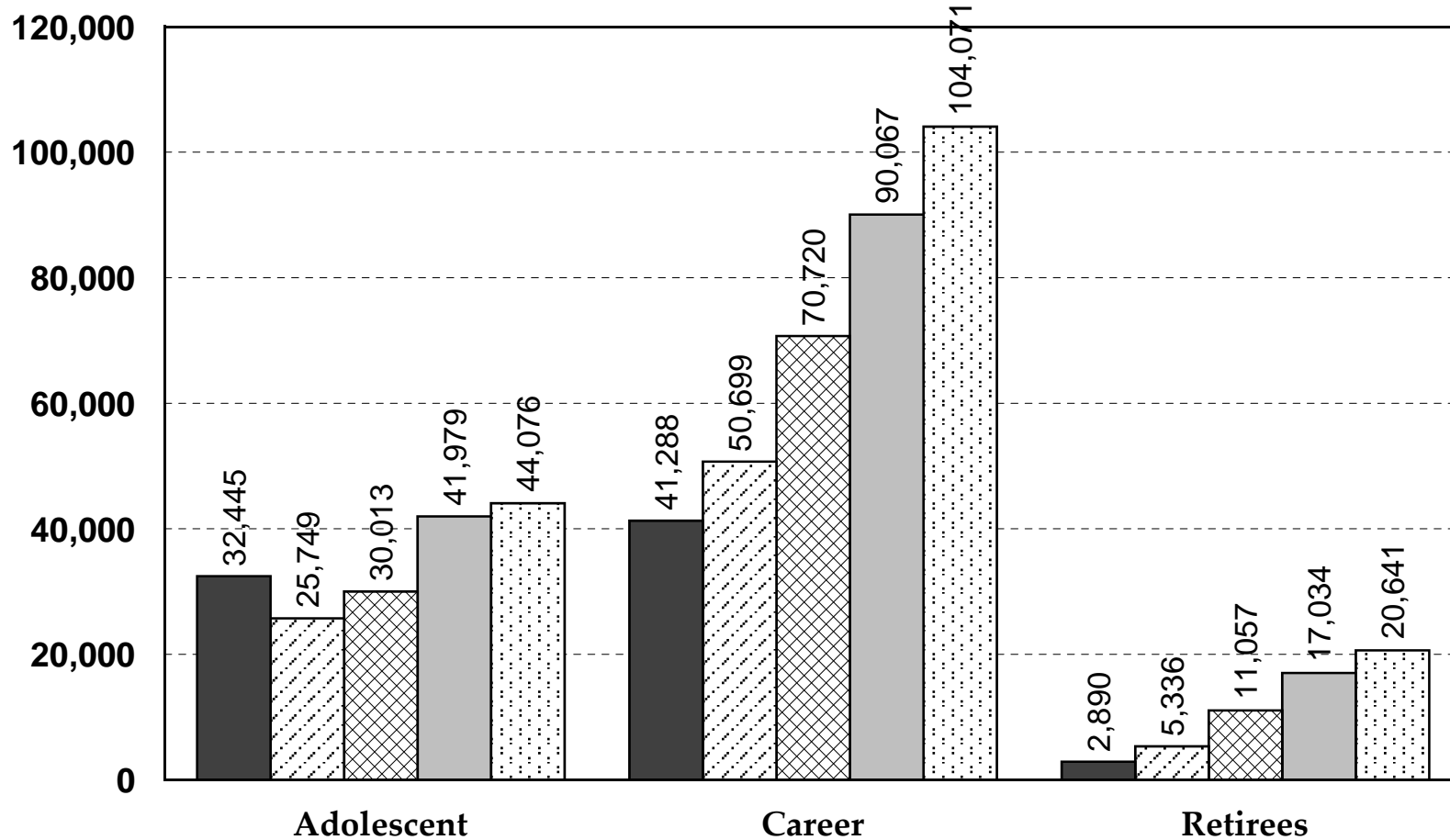
Source: U.S. Census and 2008 American Community Survey (ACS)

ACS data are based on a sample and are subject to sampling variability.

# Graph PP-9

## Population Change by Major Age Groups

1970, 1980, 1990, 2000, and 2008\*



Adolescent - 19 years of age and younger

Career - 20 to 64 years of age

Retirees - 65 years of age and over

■ 1970   ▨ 1980   ▩ 1990   ■ 2000   ▤ 2008

\*Note that this is an 8-year increment rather than a 10-year increment

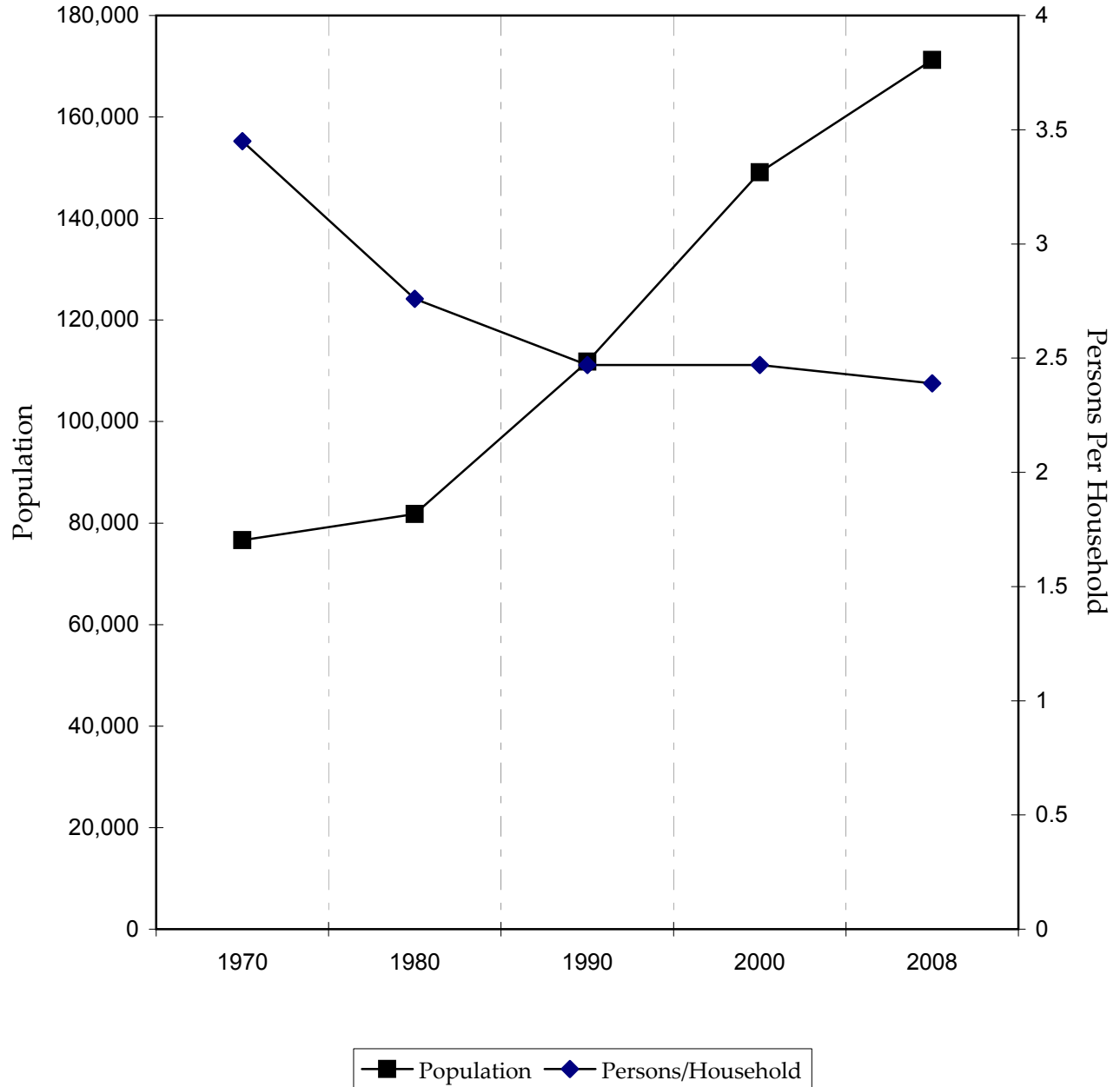
Source: U. S. Census and 2008 American Community Survey (ACS)

ACS data are based on a sample and are subject to sampling variability.

# Graph PP-10

## Change in Household Characteristics

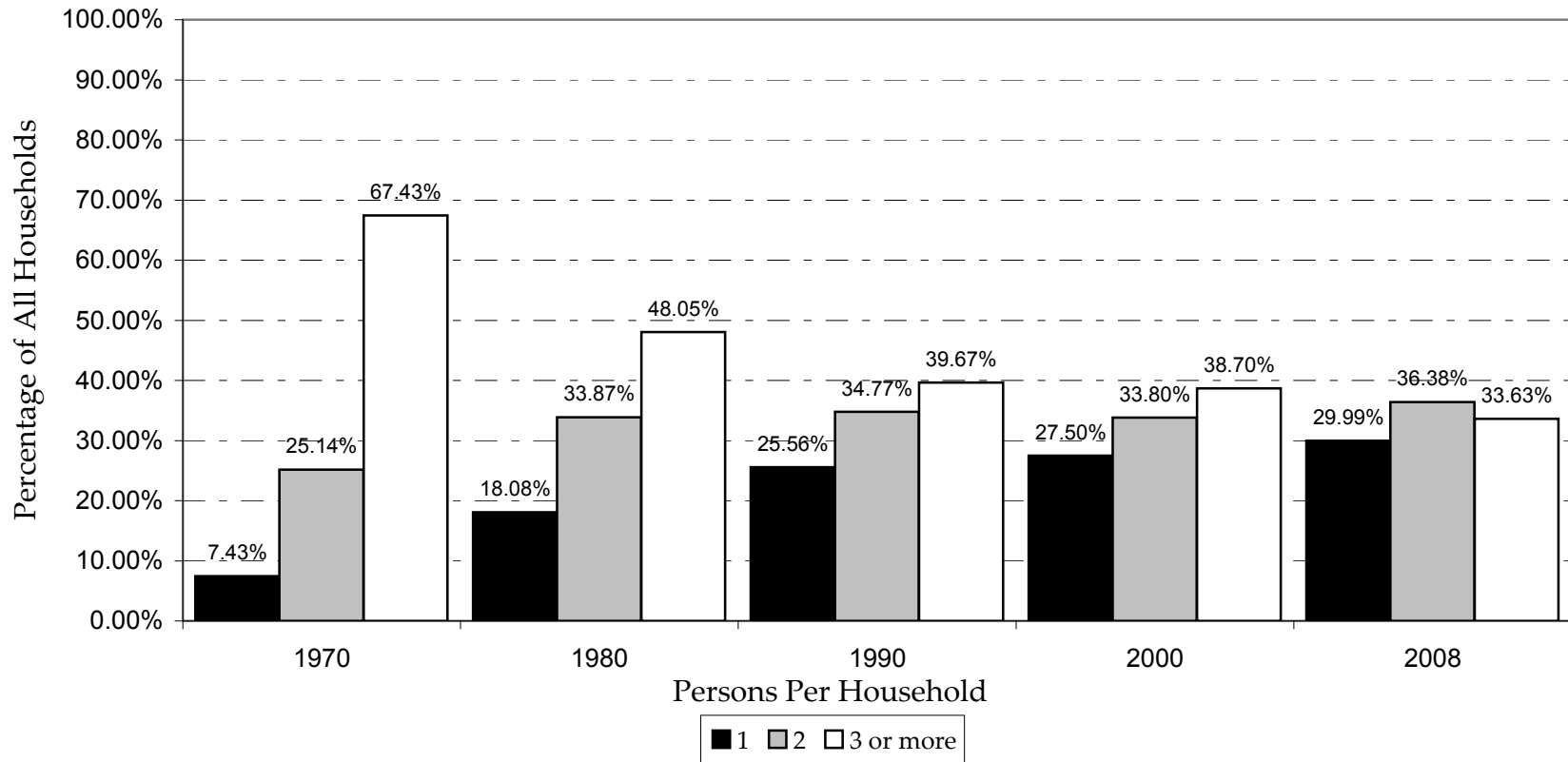
### 1970 to 2008



Source: U.S. Department of Commerce, Bureau of the Census and 2008 American Community Survey (ACS)

# Graph PP-11

## Change in Overland Park's Household Composition



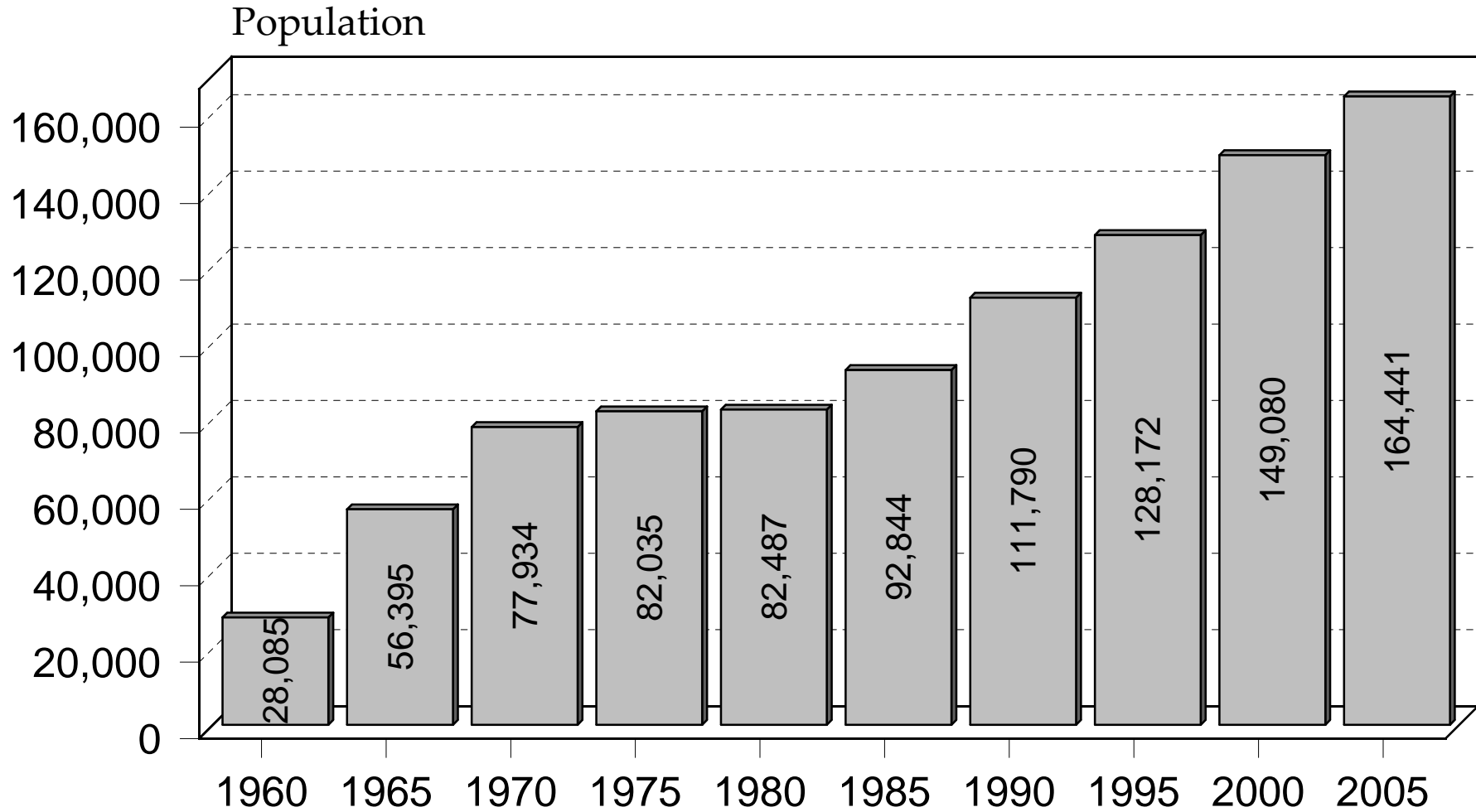
Source: U.S. Department of Commerce, Bureau of the Census and 2008 American Community Survey (ACS)

# Graph PP-12

## Population Growth

### City of Overland Park

1960 to 2005



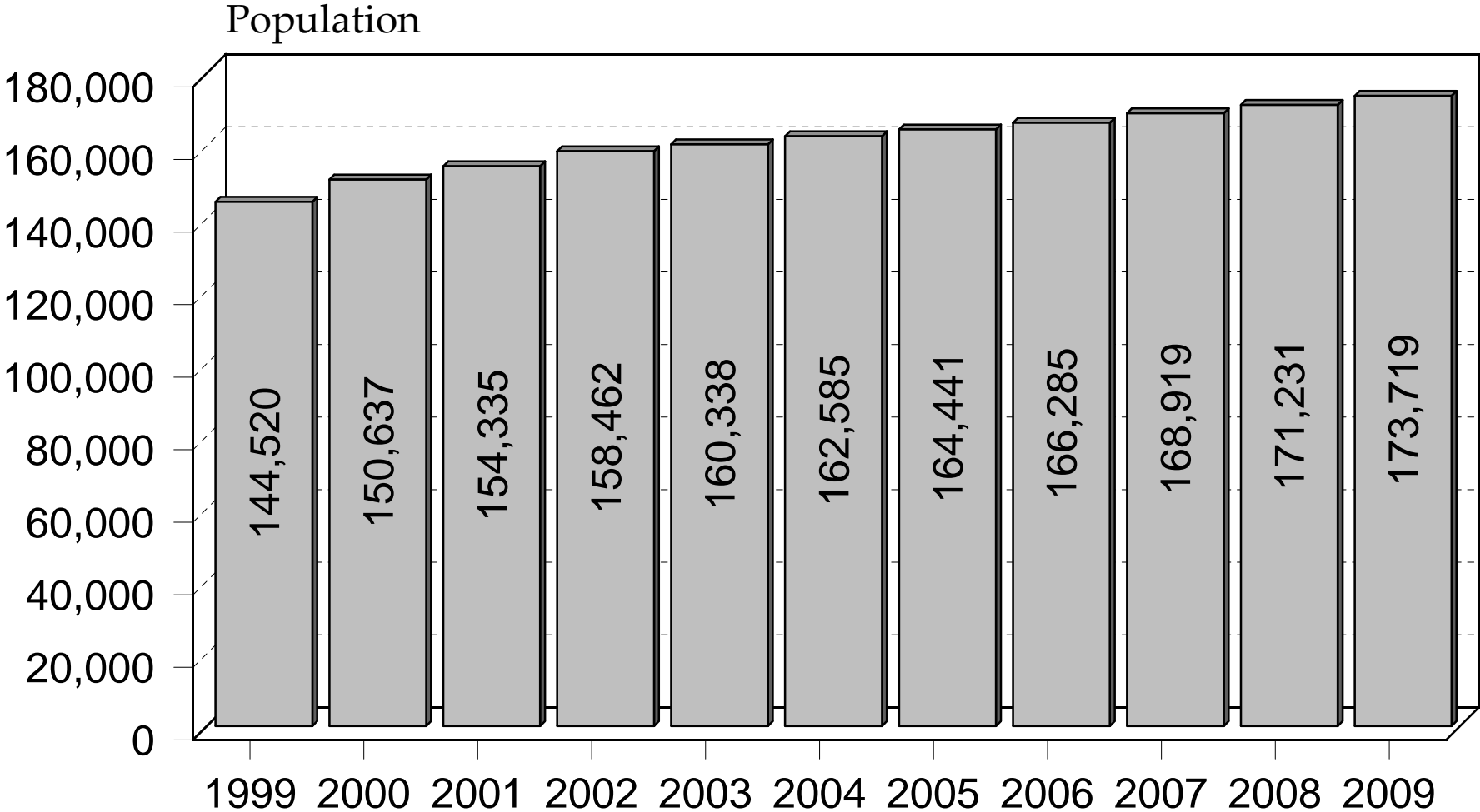
Note: Census year figures are as of April 1st  
Mid-decade figures are as of July 1st

Sources: U.S. Census

# Graph PP-13

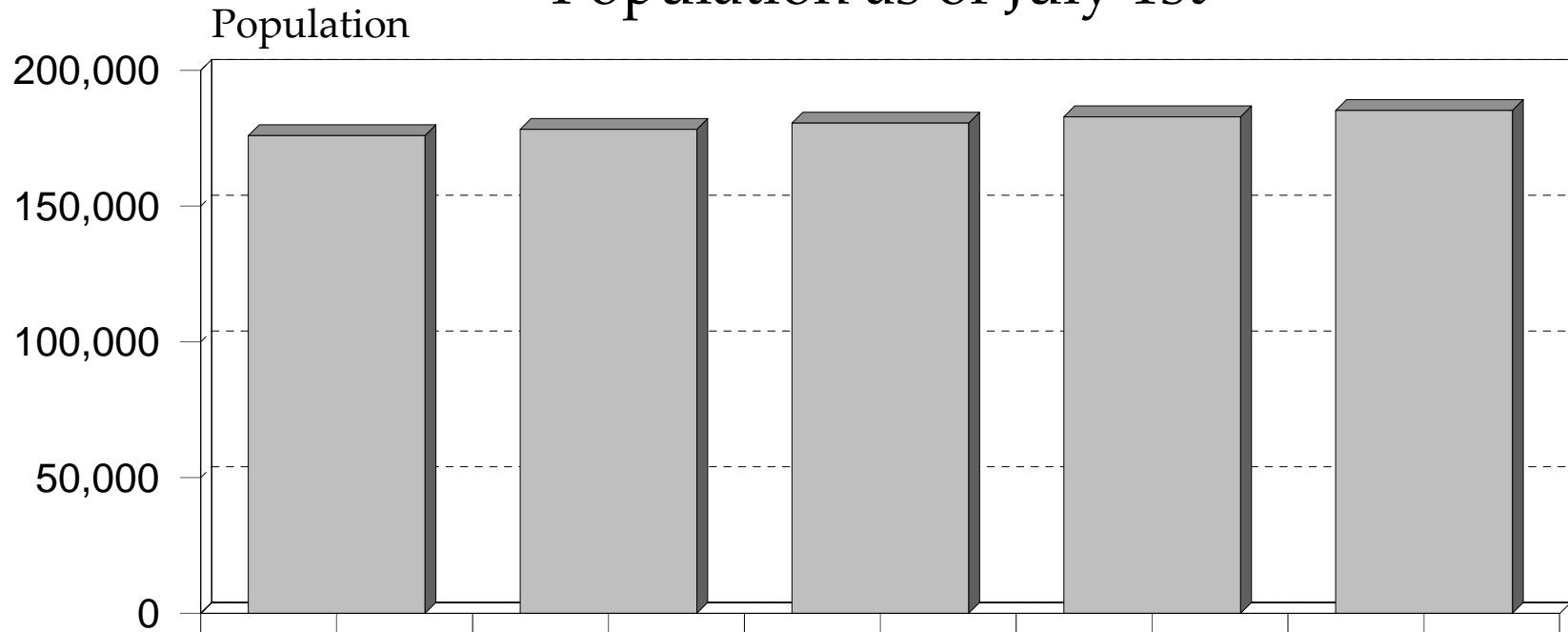
## Population Growth 1999 to 2009

### City of Overland Park



Note: All population figures are as of July 1st  
Sources: U.S. Census and City of Overland Park

# Graph PP-14 Projected Growth 2010-2014 Overland Park Population as of July 1st



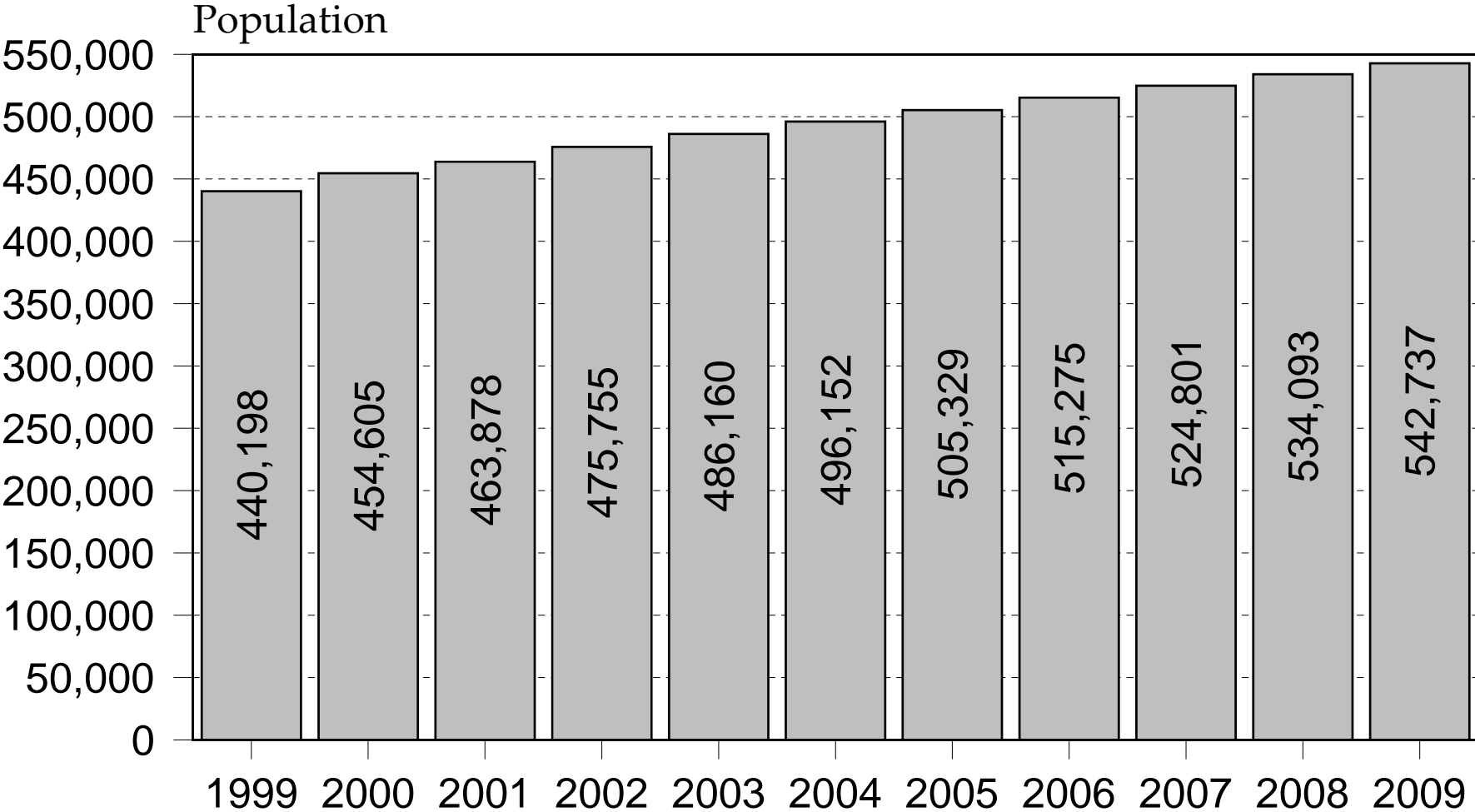
	2010	2011	2012	2013	2014
Lower Limit	174,834	176,312	178,073	180,006	182,320
<b>FORECAST</b>	<b>175,943</b>	<b>178,257</b>	<b>180,571</b>	<b>182,885</b>	<b>185,199</b>
Upper Limit	177,053	180,202	183,069	185,764	188,078

Source: City of Overland Park

# Graph PP-15

## Population Growth 1999 to 2009

### Johnson County



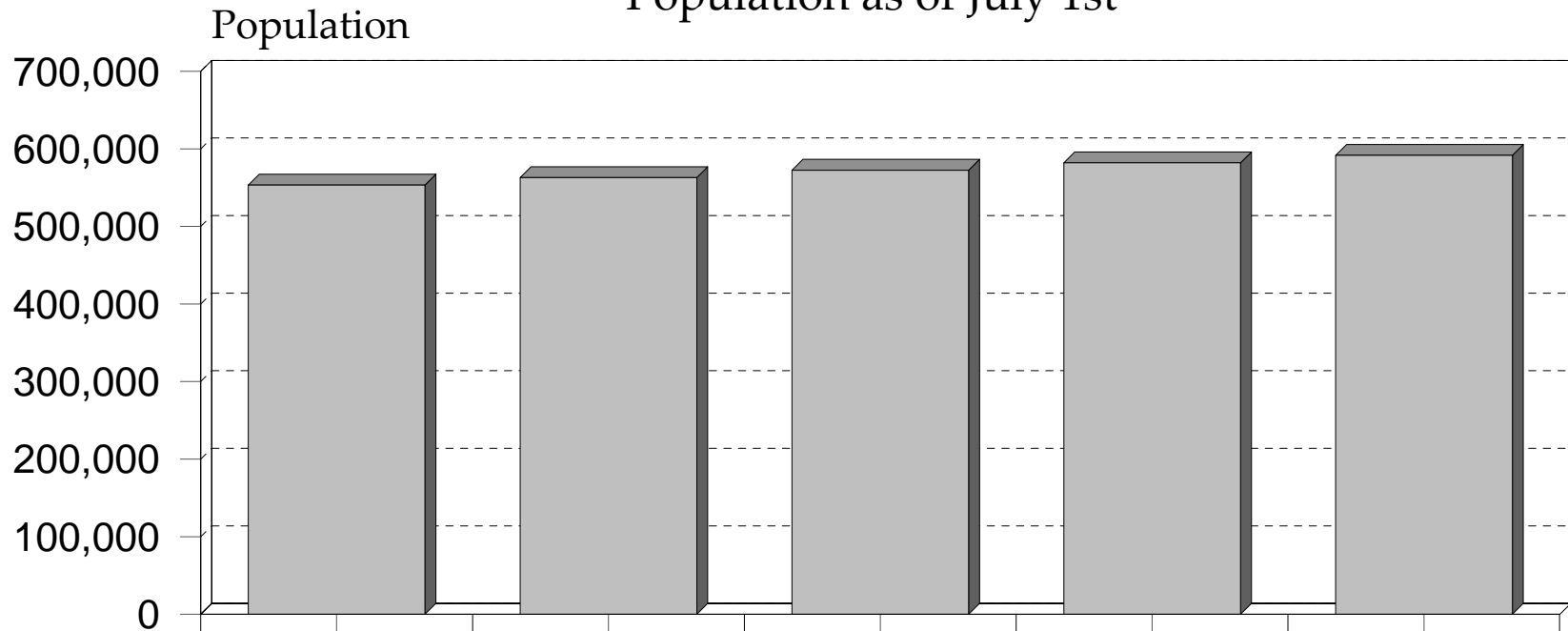
Note: All population figures are as of July 1st  
Sources: U.S. Census and City of Overland Park

# Graph PP-16

## Projected Growth 2010-2014

### Johnson County

#### Population as of July 1st



	2010	2011	2012	2013	2014
Lower Limit	550,306	558,014	564,985	571,349	576,710
<b>FORECAST</b>	<b>553,341</b>	<b>562,911</b>	<b>572,481</b>	<b>582,052</b>	<b>591,622</b>
Upper Limit	556,376	567,808	579,978	592,755	606,534

Source: City of Overland Park

# Map 1

## Ultimate City Population

July 1, 2009

**Ultimate Population**  
**Current City Limits**  
**241,305**

