

Drawn: Checked: Approved:

Issued: Notes:

Planner: Job # 04-0602-0100 Drawn:

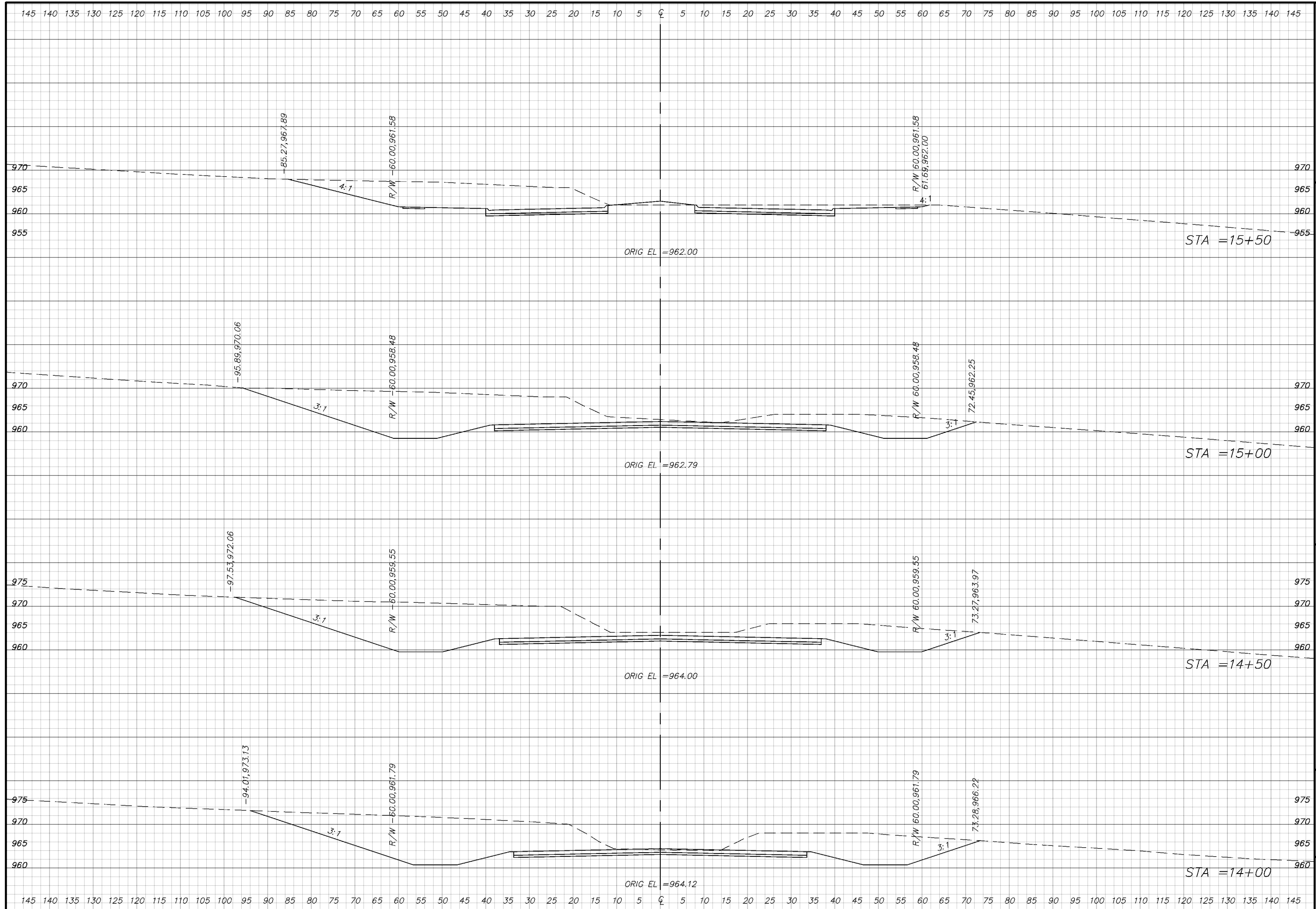
7401 West 129th Street, Suite 110  
Overland Park, Kansas 66213  
Toll Free: 877-527-5488  
Phone: 913-239-1100  
Fax: 913-239-1111  
www.affinis.us

**Affinis**  
corp

ENGINEERS • PLANNERS • CONSULTANTS

CITY OF OVERLAND PARK, KS  
2003 PRELIMINARY ENGINEERING STUDY  
METCALF AVENUE CROSS SECTIONS

**329**  
329 OF 338



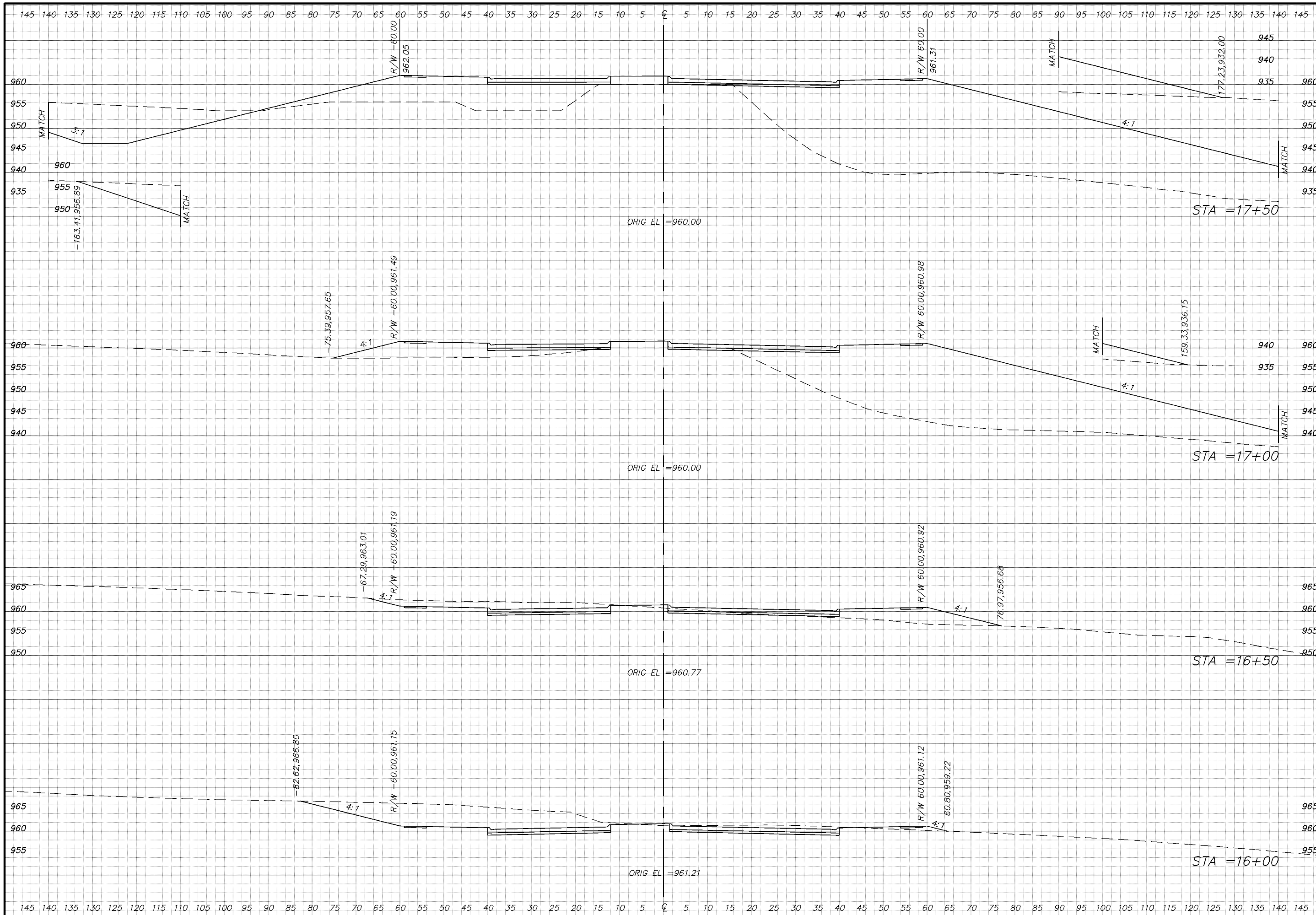
Drawn: Checked: Approved:  
 Notes:  
 Issues:  
 Filemark: Job # 04-0892-0100  
 Date: 04/04/04

7401 West 129th Street, Suite 110  
 Overland Park, Kansas 66213  
 Phone: 913-239-1100  
 Toll Free: 877-527-5488  
 Fax: 913-239-1111  
 www.affinis.us  
 Building long-lasting relationships



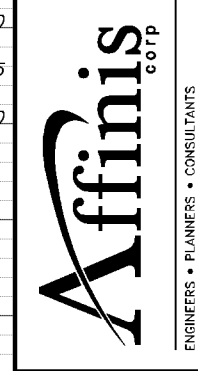
CITY OF OVERLAND PARK, KS  
 2003 PRELIMINARY ENGINEERING STUDY  
 METCALF AVENUE CROSS SECTIONS

**330**  
 330 OF 338



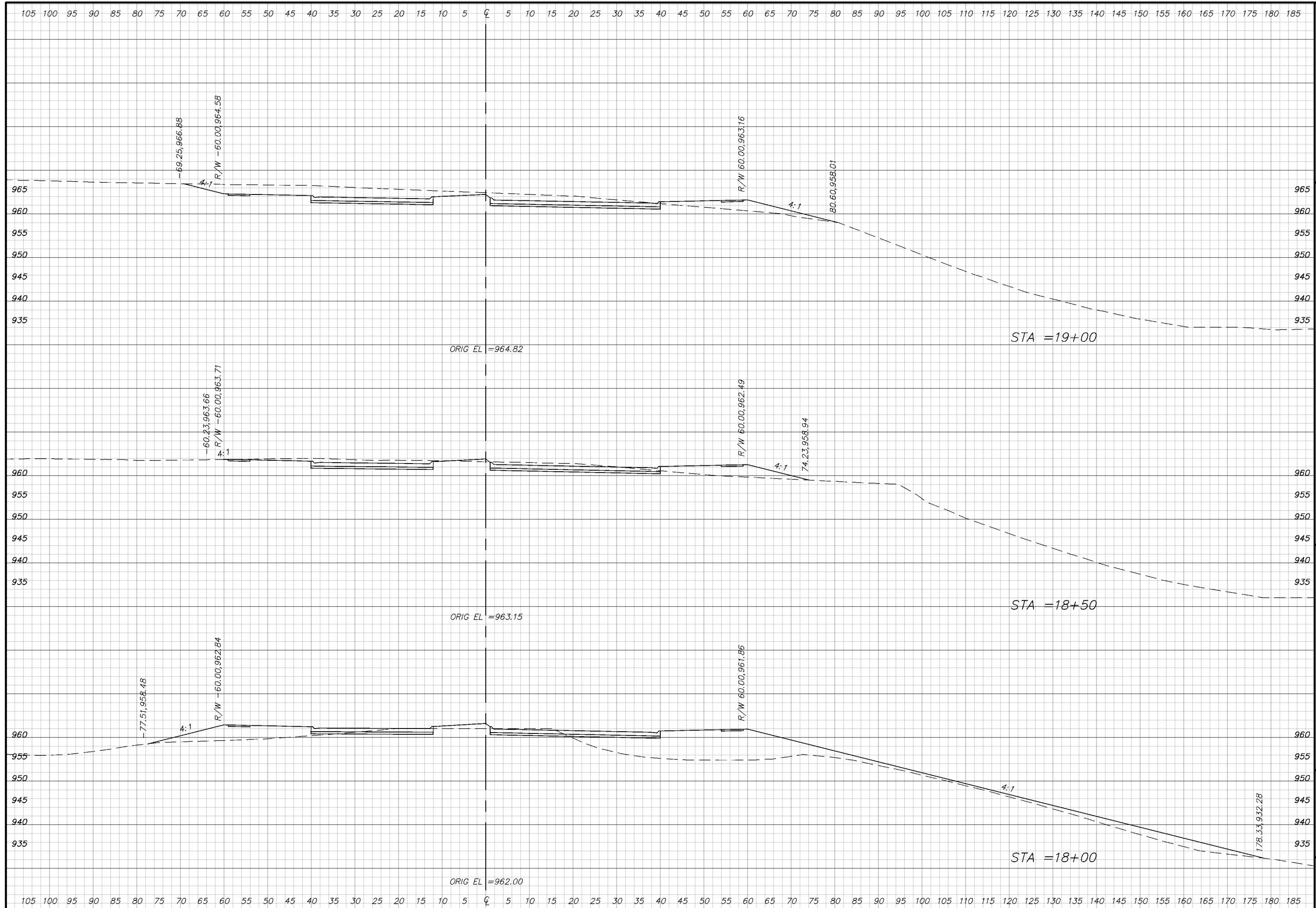
Drawn: Checked: Approved:  
 Notes:  
 Issues:

7401 West 129th Street, Suite 110  
 Overland Park, Kansas 66213  
 Phone: 913-239-1100  
 Toll Free: 877-527-5488  
 Fax: 913-239-1111  
 www.affinis.us

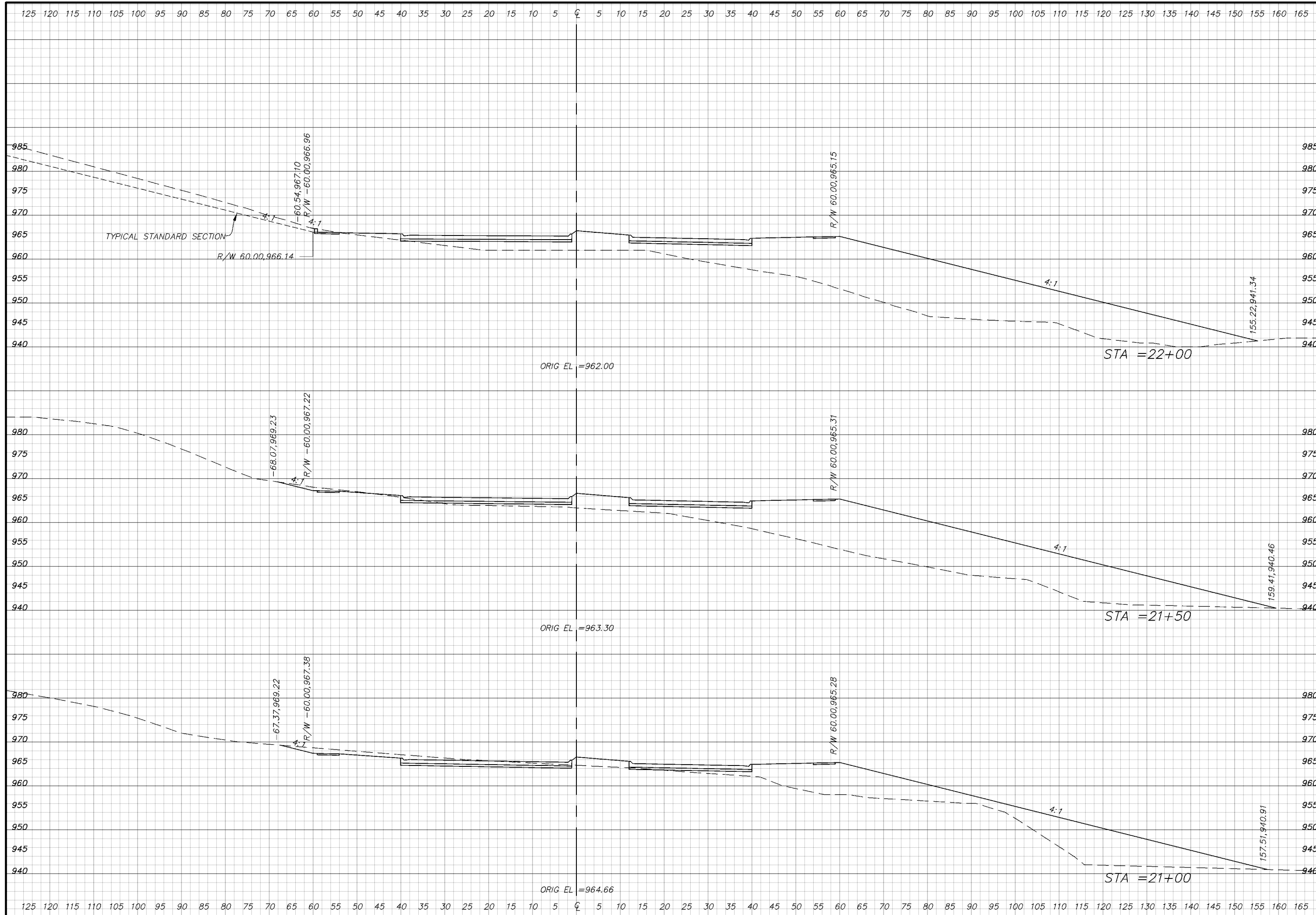


CITY OF OVERLAND PARK, KS  
 2003 PRELIMINARY ENGINEERING STUDY  
 METCALF AVENUE CROSS SECTIONS

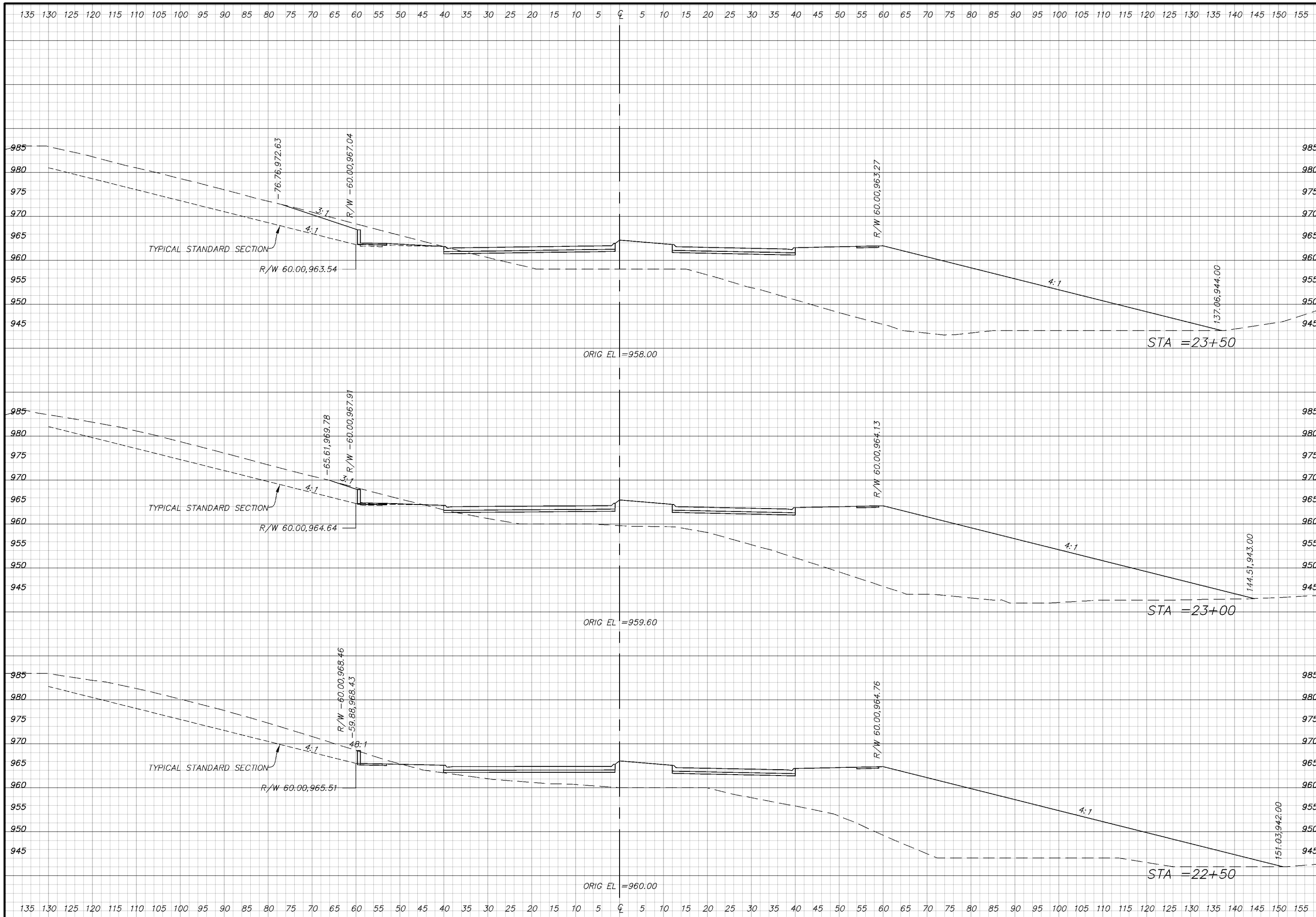
**331**  
 331 OF 338



Drawn: Checked: Approved:	
Notes:	
Issued:	
Planner: Job # 04-0692-0100	
Drawn:	
7401 West 129th Street, Suite 110 Overland Park, Kansas 66213 Phone: 913-239-1100 Toll Free: 877-527-5488 Fax: 913-239-1111 www.affinis.us	
Building long-lasting relationships	
ENGINEERS • PLANNERS • CONSULTANTS	
CITY OF OVERLAND PARK, KS 2003 PRELIMINARY ENGINEERING STUDY METCALF AVENUE CROSS SECTIONS	
332	
332 OF 338	



Drawn: Checked: Approved:  
 Notes:  
 7401 West 129th Street, Suite 110  
 Overland Park, Kansas 66213  
 Phone: 913-239-1100  
 Toll Free: 877-527-5488  
 Fax: 913-239-1111  
 www.affinis.us  
 Building long-lasting relationships  
 ENGINEERS • PLANNERS • CONSULTANTS  
 Affinis corp  
 CITY OF OVERLAND PARK, KS  
 2003 PRELIMINARY ENGINEERING STUDY  
 METCALF AVENUE CROSS SECTIONS  
**333**  
 333 OF 338



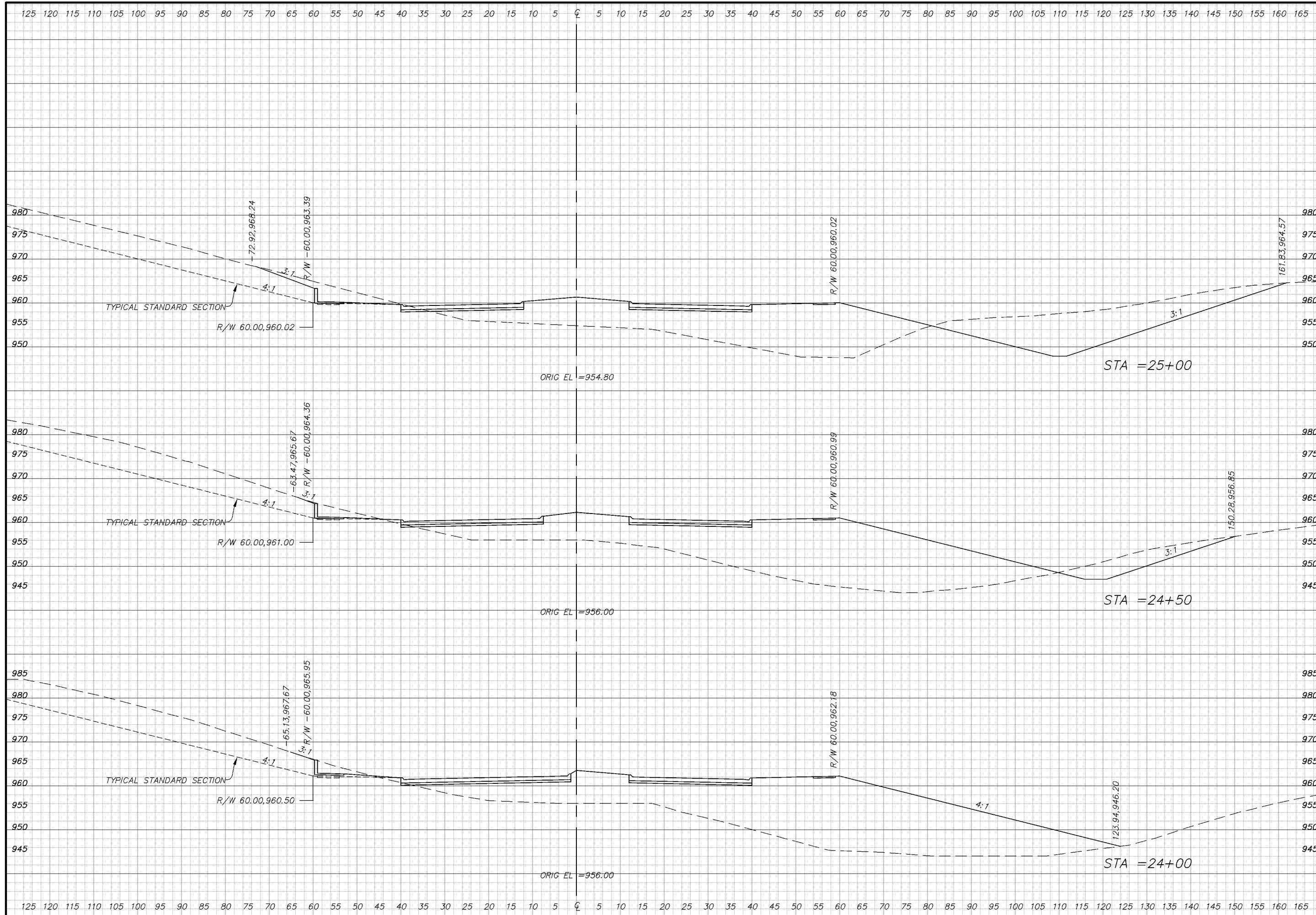
Drawn: Checked: Approved:  
 Notes:  
 Issues:  
 Date: 04-08-03 0100  
 Drawn:

7401 West 129th Street, Suite 110  
 Overland Park, Kansas 66213  
 Phone: 913-239-1100  
 Toll Free: 877-527-5488  
 Fax: 913-239-1111  
 www.affinis.us  
 Building long-lasting relationships

**Affinis**  
 corp  
 ENGINEERS • PLANNERS • CONSULTANTS

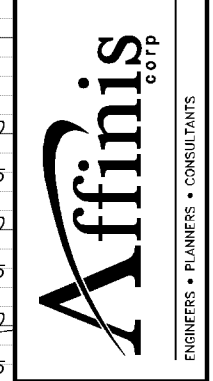
CITY OF OVERLAND PARK, KS  
 2003 PRELIMINARY ENGINEERING STUDY  
 METCALF AVENUE CROSS SECTIONS

**334**  
 334 OF 338



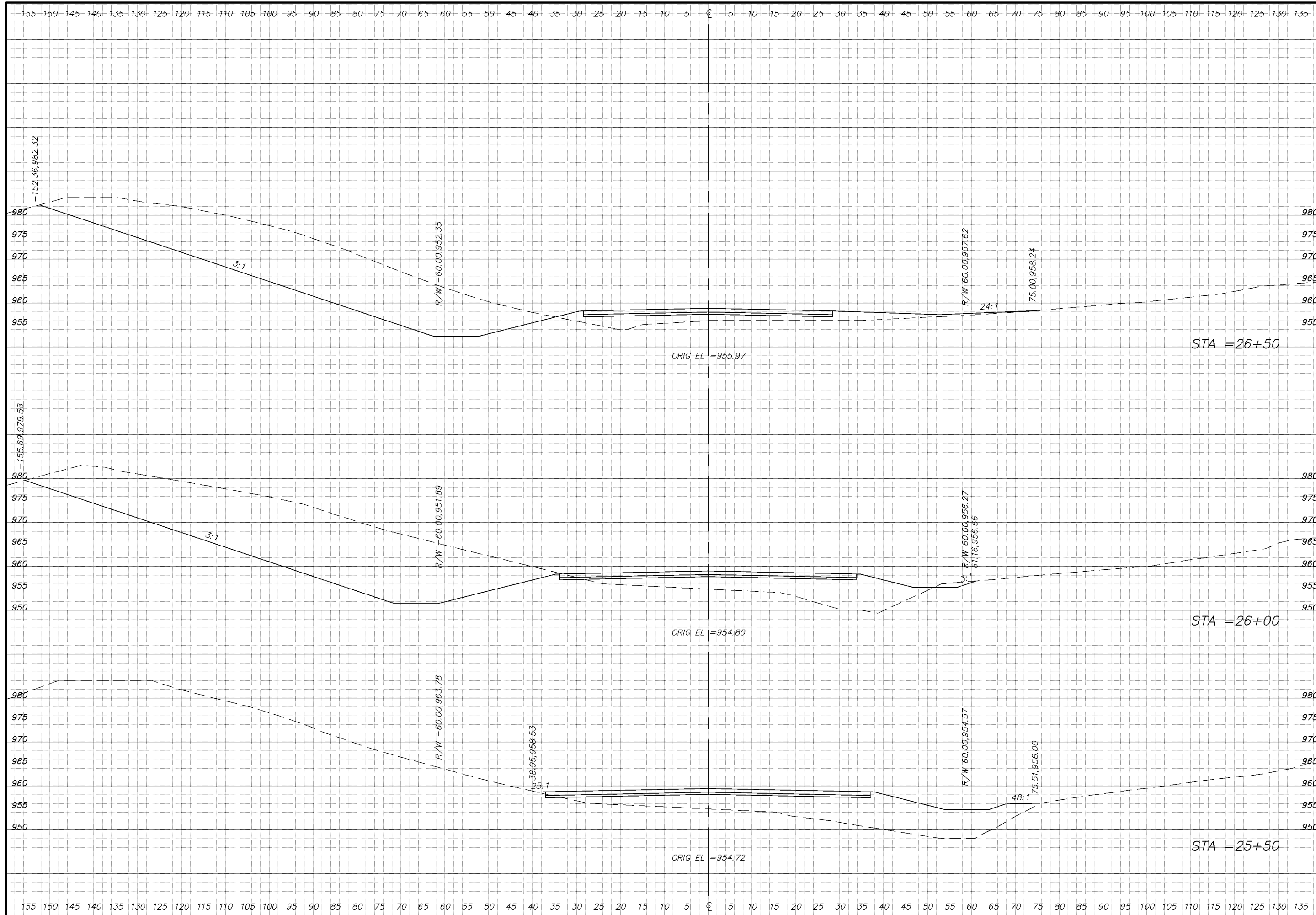
Drawn: Checked: Approved:  
 Noted:  
 Issued:  
 Date: 04-08-03 0100  
 Designer:  
 Job #

7401 West 129th Street, Suite 110  
 Overland Park, Kansas 66213  
 Phone: 913-239-1100  
 Toll Free: 877-527-5488  
 Fax: 913-239-1111  
 www.affinis.us  
 Building long-lasting relationships



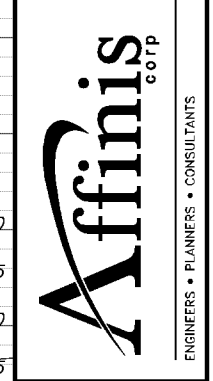
CITY OF OVERLAND PARK, KS  
 2003 PRELIMINARY ENGINEERING STUDY  
 METCALF AVENUE CROSS SECTIONS

**335**  
 335 OF 338

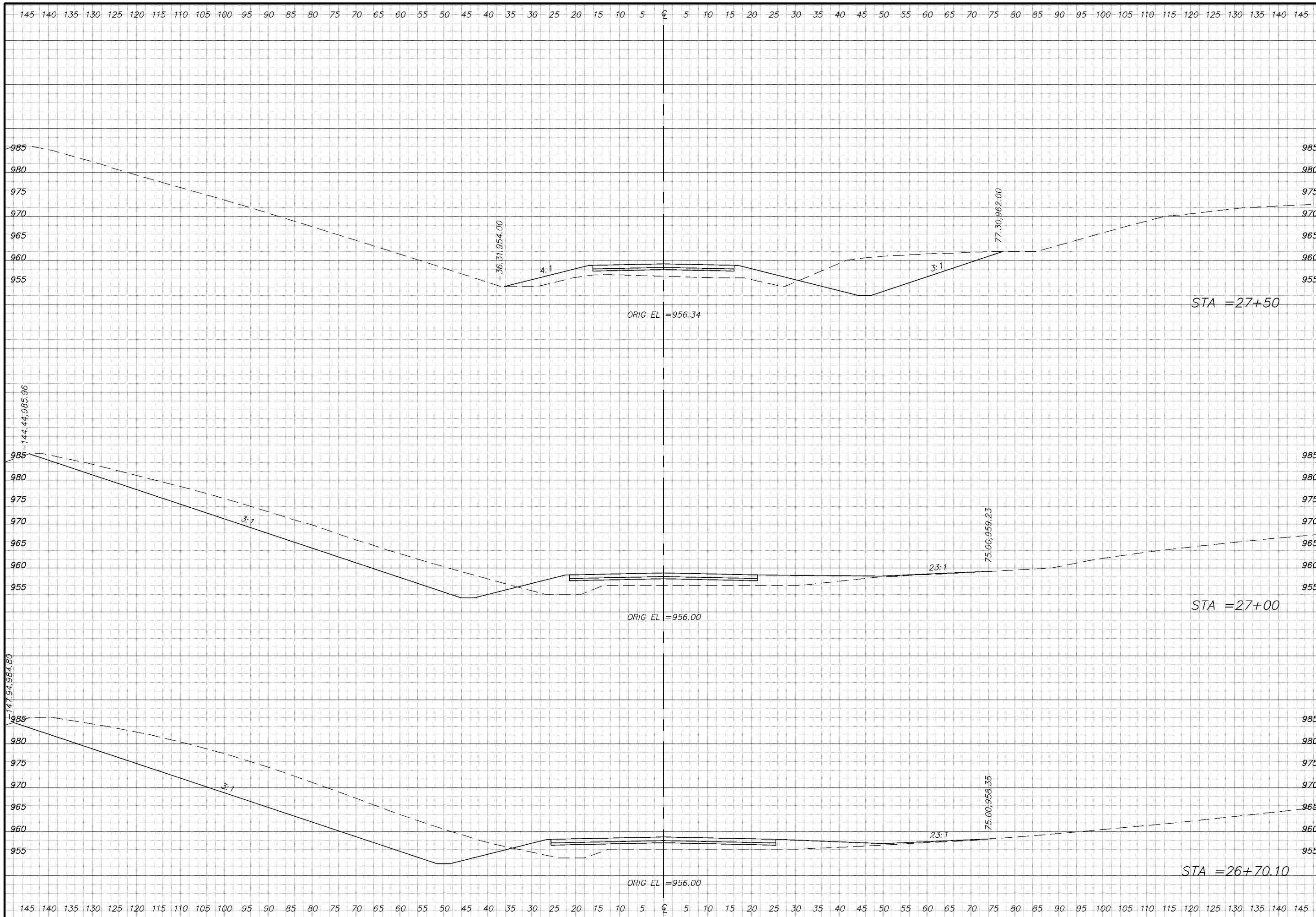


Drawn: Checked: Approved:  
 Notes:  
 Issues:  
 Planner:  
 Job # 04-0892-0100  
 Drawn:

7401 West 129th Street, Suite 110  
 Overland Park, Kansas 66213  
 Phone: 913-239-1100  
 Toll Free: 877-527-5488  
 Fax: 913-239-1111  
 www.affinis.us  
 Building long-lasting relationships

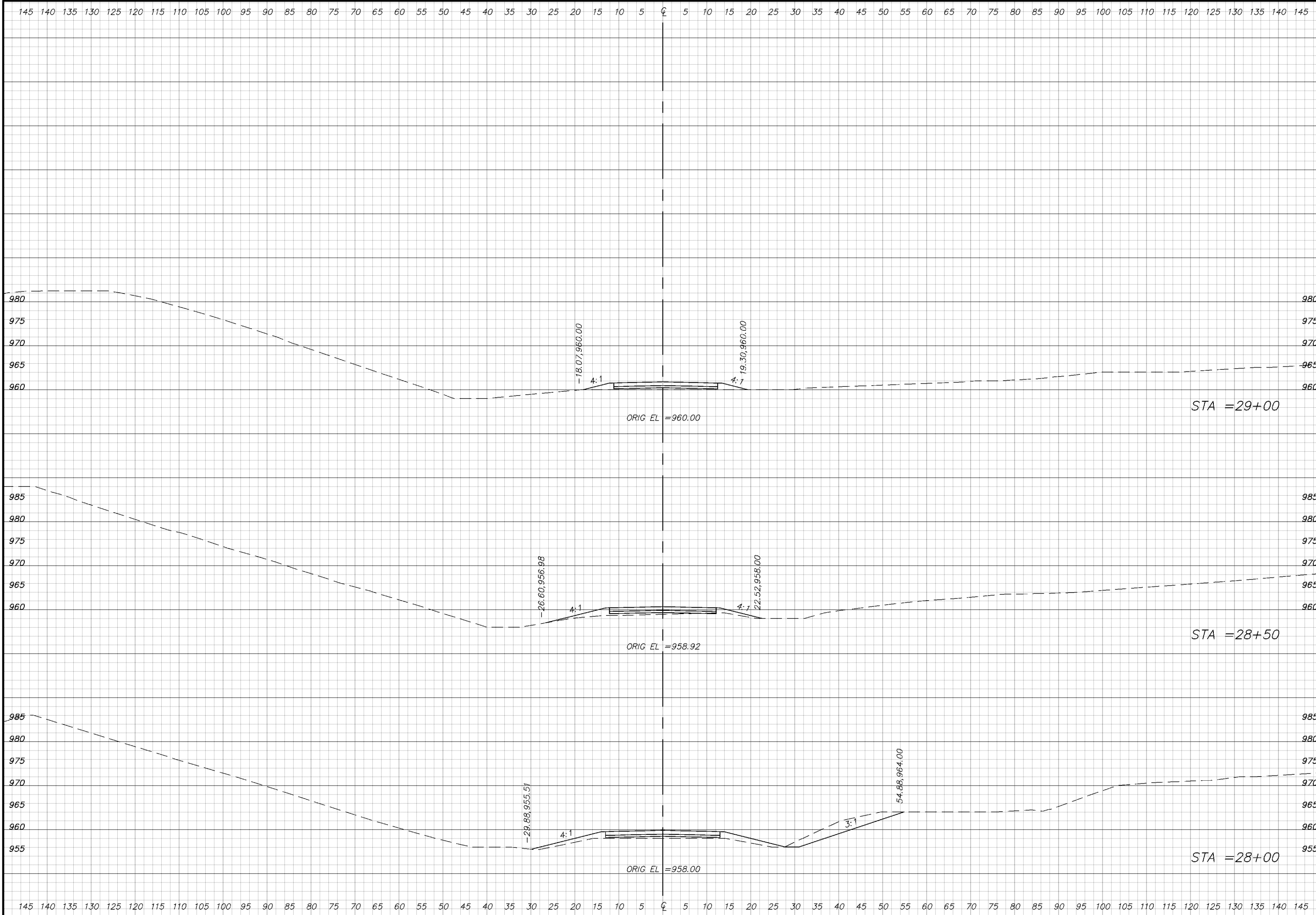


CITY OF OVERLAND PARK, KS  
 2003 PRELIMINARY ENGINEERING STUDY  
 METCALF AVENUE CROSS SECTIONS



Drawn: Checked: Approved:	Notes:	Issue:	Date:
<p><b>Affinis</b> corp</p> <p>ENGINEERS • PLANNERS • CONSULTANTS</p>			
<p>CITY OF OVERLAND PARK, KS 2003 PRELIMINARY ENGINEERING STUDY METCALF AVENUE CROSS SECTIONS</p>			
<p><b>337</b></p> <p>337 OF 338</p>			

7401 West 129th Street, Suite 110  
 Overland Park, Kansas 66213  
 Phone: 913-239-1100  
 Toll Free: 877-527-5488  
 Fax: 913-239-1111  
 www.affinis.us  
 Building long-lasting relationships



Drawn: Checked: Approved:  
 Noted:  
 Issued:  
 Date: 10/09/03  
 Job #: 03-0892-0100  
 Drawn:

7401 West 129th Street, Suite 110  
 Overland Park, Kansas 66213  
 Phone: 913-239-1100  
 Toll Free: 877-527-5488  
 Fax: 913-239-1111  
 www.affinis.us



CITY OF OVERLAND PARK, KS  
 2003 PRELIMINARY ENGINEERING STUDY  
 METCALF AVENUE CROSS SECTIONS