

For trails north of I-435, see Greenway Linkages Plan For Northern Overland Park

LINKAGES

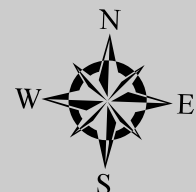
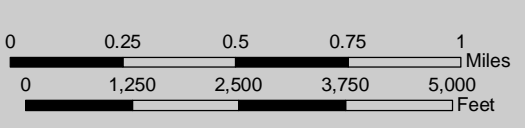
- Type 1 - Greenway
- Type 2 - Thoroughfare Street
- Type 3 - Collector & Commercial Street
- Type 4 - Collector Parkway
- Type 5 - Parkway (U.S. 69 Corridor)
- Parkway (U.S. 69 Corridor) No Bike/Pedestrian Trail
- Adjacent Community Linkage

LAND USE

- Public Park and Greenway Land (Existing)
- Public Park and Greenway Land (Proposed)
- Other Open Space (May include streamway corridors)
 - General Location, Potential Public or Private Park or Open Space
- School
 - General Location, Potential School Site
- Public/Semipublic Community Use Facility

Arboretum Entrance Corridor (Type 2 Greenway Linkage with Additional Landscape Amenities)

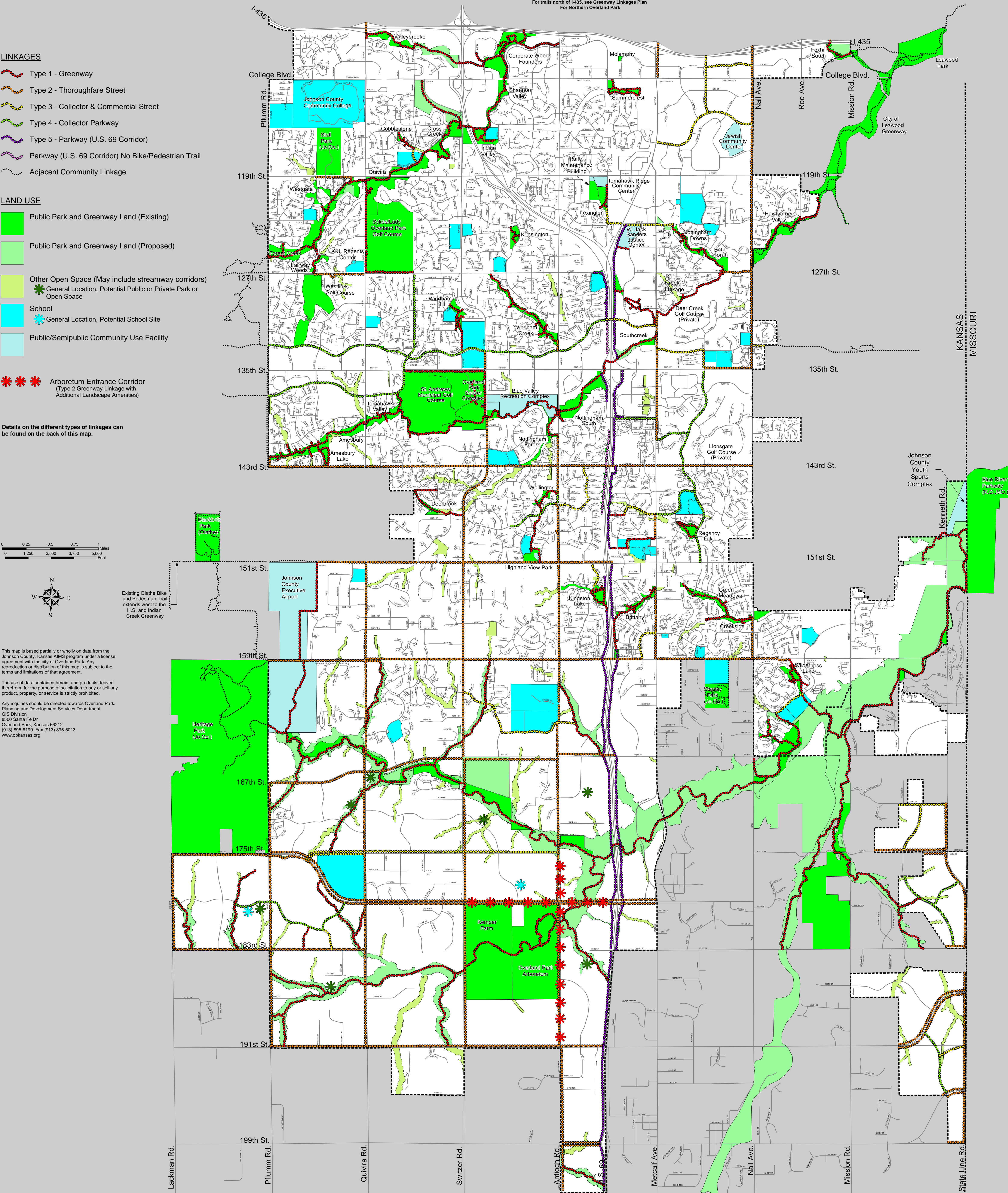
Details on the different types of linkages can be found on the back of this map.



This map is based partially or wholly on data from the Johnson County, Kansas AIMS program under a license agreement with the city of Overland Park. Any reproduction or distribution of this map is subject to the terms and limitations of that agreement.

The use of data contained herein, and products derived therefrom, for the purpose of solicitation to buy or sell any product, property, or service is strictly prohibited.

Any inquiries should be directed towards Overland Park, Planning and Development Services Department, GIS Division, 6500 Santa Fe Dr, Overland Park, Kansas 66212, (913) 895-6190 Fax (913) 895-5013, www.opkansas.org



GREENWAY LINKAGES PLAN

For Southern Overland Park

